



2009 Mazda CX-7

2009 Mazda CX-7





Stop. Take a listen. You'll hear it everywhere. **The double beat. The one-two cadence that propels us all from deep within.** Thump-Thump. Goes the heart. **The boxer throws the powerful one-two-boxing's most feared combination.** Two quick claps of the hands and dancers prepare for perfection. **Snap your fingers two times and watch as everyone around gets ready to move.** Why do rock legends tap the microphone twice before melting your face? **What makes a thoroughbred's muscles respond to two clicks from a jockey's mouth? This is no mere coincidence.** The double beat lives on a deeper level. An emotional level. It's a universal tribal-like connection. **It's everywhere. And we've followed it for over 40 years.** Always building to it. **It's what drove us to make the MX-5 Miata, the best-selling roadster of all time. The MAZDASPEED3, one of the fastest front-wheel-drive cars on the planet. And the CX-9, 2008 North American Truck of the Year. It's what stirs our soul.** And what has led us to create a crossover that combines the style and performance of a sports car with the room and practicality of an SUV. **The turbocharged, 5-passenger Mazda CX-7.** We'll never stop listening. **Zoom-Zoom. Forever.**



The future of the crossover has never looked better. You wouldn't think a crossover as versatile as the Mazda CX-7 could also pack such killer good looks. Or exhilarating performance. But it does. Because when Mazda designers created this 5-passenger SUV, they dared to think outside the box. And the box. And way beyond the expected. Envisioning an SUV endowed with both sports-car-inspired styling *and* performance. An SUV that's turbocharged, intercooled and even direct-injected. With a 6-speed Sport AT automatic transmission. Advanced 4-wheel independent suspension. And 4-wheel ventilated disc brakes with ABS. Want an SUV that's both versatile *and* exhilarating? Crossover to Mazda CX-7.



SUV versatility has never been so cleverly camouflaged. You wouldn't think a crossover as exhilarating and fun to drive as the Mazda CX-7 could also be so practical and versatile. But it is. Because when Mazda designers created the CX-7, they formulated an ingenious blend of sports-car-inspired spirit *and* SUV versatility. With a 60/40 split rear seatback that folds down to nearly double the CX-7's cargo space. So you can easily haul everything from your camping gear and sports equipment to your groceries and luggage. A lockable storage compartment for your laptop and built-in 12-volt outlets. Even available all-wheel drive. Want an SUV that's both appealing *and* practical? Crossover to Mazda CX-7.



1 Handy Remote Releases in the cargo area allow you to easily fold down the 60/40 split rear seatback—and expand the CX-7's 38.9-inch-long cargo area without removing any headrests. **2 A 60/40 Split Fold-Down Rear Seatback** enables you to nearly double the CX-7's cargo area and create a virtually flat load floor that offers an expansive 58.6 cu ft of cargo space. **3 The CX-7 Makes It Easy To Transport Everything** from sports and outdoor gear to furniture and office equipment.* And its behind-the-rear-seat cargo area even features a reversible (carpet/durable composite) floor panel to better protect car and cargo.



* Please remember to properly secure all cargo.



Experience a turbocharged tour de force. Some "powertrains" are more worthy of the word than others. Like the grin-inducing 244-hp* 2.3-liter 16-valve all-aluminum MZR engine that powers the Mazda CX-7. Turbocharged, intercooled and direct-injected, it has the extraordinary ability to deliver 99% of its maximum torque up to 5000 rpm. And because it's both turbocharged and direct-injected, it delivers enhanced fuel economy as well as plenty of extra power when you want it. Plus the benefits of a 6-speed Sport AT automatic featuring a manual-shift mode. The end result is an advanced powertrain that delivers fun-to-drive performance that's both responsive and responsible.



1 Turbocharged And Intercooled, the CX-7's responsive and powerful 2.3-liter engine generates an impressive 244 hp @ 5000 rpm and 258 lb-ft of torque @ 2500 rpm. **2 Direct-Injection Spark Ignition (DISI) Technology** is also utilized to improve combustion, enhance fuel economy and further boost engine torque. **3 A 6-Speed Sport AT Automatic Transmission** is standard on all Mazda CX-7 models. In manual-shift mode, it gives you the extra control—and fun—of sequentially shifting gears, but without the need of a clutch. **4 Powerful And Lightweight**, the CX-7 engine is an advanced, all-aluminum MZR design featuring 16-valves, dual overhead camshafts and molybdenum-coated pistons for friction reduction.



* Horsepower rating based on use of recommended premium fuel.



Regardless of your destination, you'll enjoy the journey. Everything about the meticulously well-crafted cockpit of the CX-7 Grand Touring is designed to exceed your expectations. The 8-way power-adjustable driver's seat includes an adjustable lumbar support. Both front-row seats are heated. A leather-wrapped steering wheel and shift knob elegantly await your eager grip. Electroluminescent gauges inform your every glance. While the AM/FM/CD audio system provides illuminated steering-wheel-mounted controls and automatic level control. It is, in fact, a superbly supportive, leather-trimmed driving environment. Welcome to first class. We've been expecting you.



1 Mazda's Advanced Keyless Entry & Start System, part of the available CX-7 Technology Package, lets you enjoy the convenience of remotely unlocking and locking all four doors, opening and closing all power windows, and even keylessly starting the engine. **2 A Stylish Center Console**, standard on all CX-7 models, features a lockable, multilevel storage compartment that's spacious enough to protect your laptop, notebook or even a purse, as well as a pair of versatile cup holders.





Technology that's inspiring instead of intimidating. At Mazda, we're experts at connecting drivers to technology that's as enjoyable as it is innovative. Like, for example, the Technology Package available on the Mazda CX-7 Grand Touring. It delivers the convenience of a voice-activated, 7-inch touch-screen navigation system. The added safety of a back-up rearview camera. Bluetooth® hands-free phone connectivity. An in-dash 6-disc CD changer mated to an incredible 240-watt Bose® 9-speaker Centerpoint® Surround Sound System. A SIRIUS Satellite Radio® with a free, 6-month subscription. Even an elegant moonroof. All engineered to enhance your driving experience on multiple levels.



1 A Back-Up Rearview Camera, part of the available CX-7 Technology Package, is activated whenever you shift into reverse and shares the 7-inch touch-screen display that's also part of the available voice-activated navigation system. **2 An In-Dash 6-Disc CD Changer And Bose® Premium Sound System** are also part of the available CX-7 Technology Package. **3 This 240-Watt Bose 9-Speaker Surround Sound System**, custom-engineered for the CX-7's interior, uses patented Centerpoint® technology to synthesize stunning, multichannel, surround sound performances from ordinary music CDs. It also features AudioPilot® technology to automatically help cancel out distracting ambient road noise. **4 Bluetooth Hands-Free Phone Capability**, also included in the available CX-7 Technology Package, enables you to make and receive calls, access voice mail messages—and more—via your Bluetooth-compatible cell phone.

BOSSE



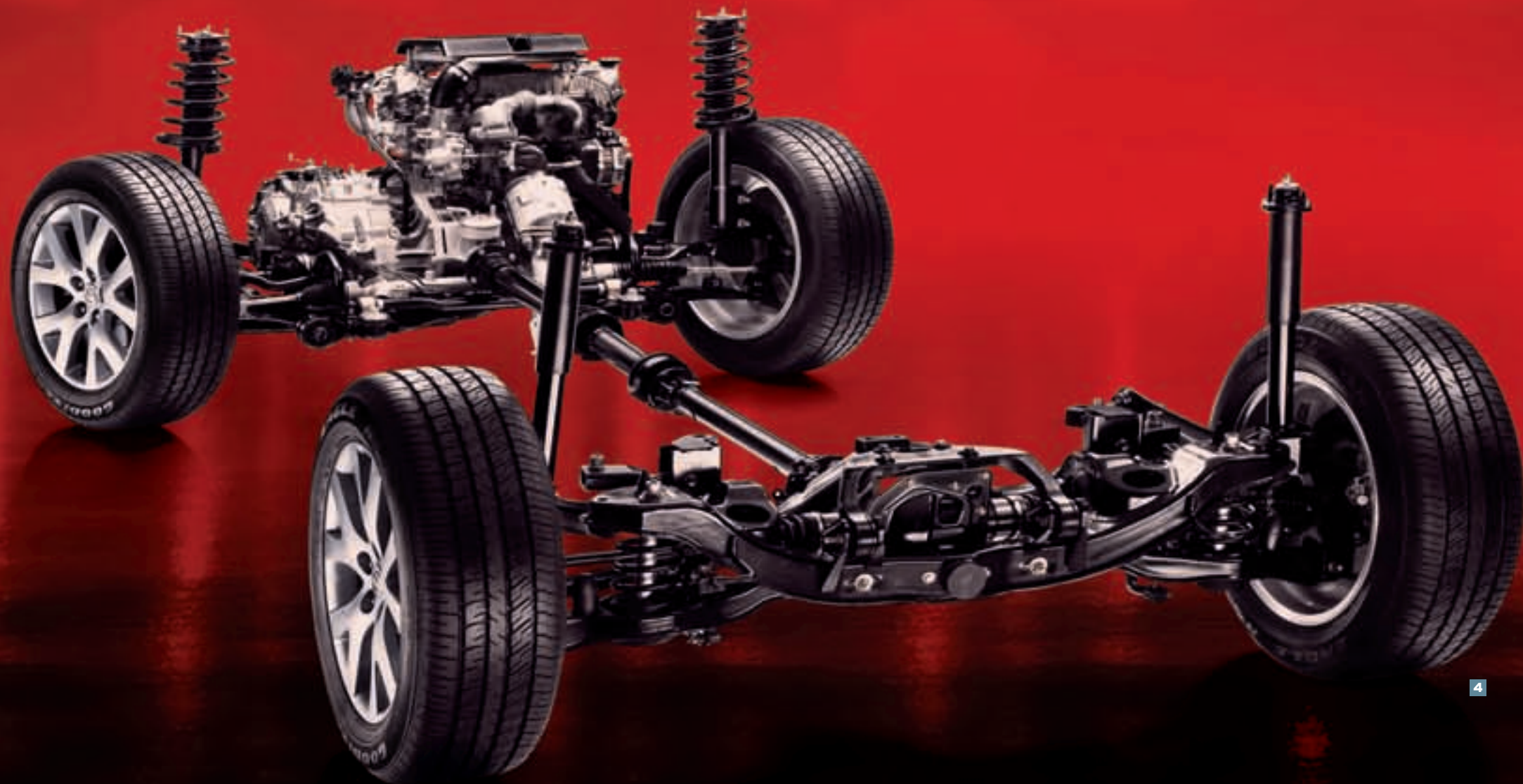
Sport Utility Vehicle versus Sport Utility Value. In many of today's boxy and overpriced SUVs, it's hard to find much sport or value. Fortunately, the affordable Mazda CX-7 Sport is a whole different animal. Note the bold, athletic styling; 18-inch alloys; and twin exhaust outlets. All standard. As is the leather-wrapped, tilt steering wheel with illuminated controls for the audio and cruise-control systems. And the versatile 60/40 split fold-down rear seatback. Even the CX-7's turbocharged, intercooled and direct-injected engine—as well as its 6-speed Sport AT automatic transmission—are standard. Finally, an SUV that makes it easy to crossover to versatility, exhilaration and value. With some style.



The Sport Is Mazda's Most Affordable CX-7 Model. Yet its standard interior features include: A 6-way manually adjustable driver's seat. Air conditioning. An AM/FM/CD audio system. Even power windows, mirrors and door locks. The CX-7 Sport's performance engineering also raises the bar and includes: Four-wheel independent suspension. Power-assisted 4-wheel ventilated disc brakes with ABS. Plus Dynamic Stability Control.* All standard.

* Dynamic Stability Control is not a substitute for safe driving practices.





In a CX-7, safety doesn't depend on options or add-ons. Comprehensive safety engineering comes standard with every Mazda CX-7. As does the peace of mind it produces. To that end, every CX-7 incorporates: The extra structural reinforcements of Mazda's "Triple H" construction. Front and rear crumple zones. Plus a full complement of dual front air bags, front side-impact air bags and front/rear side-impact air curtains* with rollover protection. All of which helped CX-7 earn Five Stars—the highest possible rating—in government frontal and side-impact crash tests.† Every CX-7 is also equipped with a Tire-Pressure Monitoring System. Fade-resistant, 4-wheel ventilated disc brakes featuring ABS, Electronic Brakeforce Distribution and Brake Assist. Dynamic Stability Control.‡ Even a Traction Control System. All to give CX-7 safety a truly solid footing.



1 **Advanced Dual Front Air Bags**, plus front side-impact air bags and side-impact air curtains,* are standard on all CX-7 models. 2 **Four-Wheel Ventilated Disc Brakes, Dynamic Stability Control[†] and Traction Control System** are all standard on every Mazda CX-7 model. To further ensure optimum stopping power, an Anti-lock Brake System (ABS) with Electronic Brakeforce Distribution and Brake Assist is also standard. 3 **Xenon High-Intensity-Discharge (HID) Low-Beam Headlights** are standard on the Grand Touring and include an automatic shutoff feature. 4 **An Advanced Active Torque Split All-Wheel-Drive System** (opposite page) is available on all Mazda CX-7 models to help provide optimum traction and control—regardless of changes in weather or road surface. Its computer-controlled design continuously monitors wheel speed, Anti-lock Brake System and Dynamic Stability Control[†] operations, as well as engine data, to instantly distribute the ideal amount of torque between the front and rear wheels from 100:0 to 50:50.



The Mazda CX-7 earned the highest possible rating, **Five Stars**, in government frontal and side-impact crash tests.†

* Always wear your seat belt and secure children in the rear seats in appropriate child restraints. † Government star ratings are part of NHTSA's New Car Assessment Program (NCAP). For complete test results, visit www.nhtsa.gov. ‡ DSC is not a substitute for safe driving practices.



"...the best crossover out there for the money."—Edmunds' *Inside Line*. Every Mazda we make is the inspired intersection of insightful engineering, stylish design and spirited performance. And the '09 Mazda CX-7 is exhilarating proof. No wonder that after thoroughly testing the CX-7, *AutoWeek* (1/22/07) candidly confessed: "Some of the staff think it might just be the best crossover/SUV-type vehicle they have driven." But then, if there's a smarter, more reliable or fun way to make something move, Mazda engineers are all over it. Which is why, as we craft, tool, stitch and fit together your new Mazda CX-7, we have no desire to take any shortcuts. And as a result, neither will you. **Zoom-Zoom. Forever.**

CX-7 SPECIFICATIONS & CAPACITIES

Specifications	
Engine size and type	2.3L DISI turbocharged and intercooled 16-valve 4-cylinder
Horsepower, SAE net	244* @ 5000 rpm
Torque, SAE net (lb-ft)	258 @ 2500 rpm
Redline	6700 rpm
Compression ratio	9.5:1
Fuel system	Direct-Injection Spark Ignition (DISI)
Fuel	Regular unleaded (for maximum performance, premium unleaded recommended)
EPA estimated mileage (city/highway)	FWD: 17/23 AWD: 16/22
Body type	Unibody with "Triple H" construction
Steering type	Power rack-and-pinion with variable assist
Turning circle, curb-to-curb (ft)	37.4
Base curb weight (lb)	FWD: 3710 AWD: 3929

Exterior Dimensions	
Wheelbase/overall length (in)	108.3/184.0 (without license-plate holder)
Overall width/overall height (in)	73.7/64.8 (without roof rack)
Track, front/rear (in)	63.7/63.5
Ground clearance (in)	8.1

Interior Dimensions	
	(Front/Rear)
Headroom (in)	39.7/39.3
Headroom with moonroof (in)	38.2/38.6
Legroom (in)	41.7/36.4
Shoulder room (in)	58.0/55.8
Hip room (in)	54.8/53.0

Capacities		
Passenger volume (cu ft)	101.7 (without moonroof)	98.8 (with moonroof)
Cargo volume (cu ft)	29.9 (rear seatback up)	58.6 (rear seatback folded)
Fuel capacity (U.S. gallons)	18.2	
Towing capacity (lb)	2000	

CX-7 ENGINE & MECHANICAL

Engine/Transmission	Sport	Touring	Grand Touring
2.3L DISI turbocharged and intercooled 16-valve 4-cylinder	S	S	S
6-speed Sport AT automatic transmission	S	S	S
Front-wheel drive	S	S	S
Active Torque Split All-Wheel Drive	0	0	0

Suspension & Brakes	Sport	Touring	Grand Touring
Power variable-assist rack-and-pinion steering	S	S	S
Independent MacPherson strut front suspension	S	S	S
Independent multi-link rear suspension	S	S	S
Power-assisted ventilated front disc brakes	S	S	S
Power-assisted ventilated rear disc brakes	S	S	S
Anti-lock Brake System (ABS) with Electronic Brakeforce Distribution (EBD) and Brake Assist	S	S	S
Dynamic Stability Control (DSC)†	S	S	S
Traction Control System (TCS)	S	S	S

S: Standard O: Optional P: Package option A: Dealer-installed accessory -: Not available

* Horsepower rating based on use of recommended premium unleaded fuel. † Dynamic Stability Control (DSC) is an electronic system designed to help the driver maintain control under adverse conditions. It is not a substitute for safe driving practices. Factors including speed, road conditions and driver steering input can all affect whether DSC will be effective in preventing loss of control. Please see your Owner's Manual for further details. ‡ Sport model requires Power Seat Option Package. § Not available with trailer hitch or Aero Package. ¶ SIRIUS Satellite Radio reception requires a subscription and Mazda satellite radio receiver accessory kit. Available only in the U.S., except Alaska and Hawaii. **Always wear your seat belt and secure children in the rear seats in appropriate child restraints.

CX-7 OPTIONS & OPTION PACKAGES

Options/Option Packages	Sport	Touring	Grand Touring
Power Seat Option Package: 8-way power-adjustable driver's seat with adjustable lumbar support (recline, lift, tilt & slide); heated front seats	0	S	S
Moonroof, Bose® Audio, 6-Disc CD Changer Package: Power sliding-glass moonroof; Bose® Premium Centerpoint® Surround System; in-dash 6-disc CD changer; SIRIUS Satellite Radio® and six-month subscription; Bluetooth® hands-free phone capability	0†	0	0
Technology Package: Power sliding-glass moonroof; Bose Premium Centerpoint Surround System; in-dash 6-disc CD changer; SIRIUS Satellite Radio and six-month subscription; navigation system; rearview camera; Mazda Advanced Keyless Entry & Start System; Bluetooth hands-free phone capability; perimeter alarm	-	-	0
Aero Package: Front wind splitter and rear spoiler	0/A	0/A	0/A
Under Guard Package: Front and rear under guards‡	0/A	0/A	0/A
Rear bumper guard	0/A	0/A	0/A
Front and rear splash guards	0/A	0/A	0/A
Moonroof wind deflector (requires moonroof)	0/A	0/A	0/A
SIRIUS Satellite Radio receiver kit¶	0/P/A	0/P/A	0/P/A
All-weather floor mats (front and rear)	0/A	0/A	0/A
Cargo net	0/A	0/A	0/A
Cargo tray	0/A	0/A	0/A
Retractable cargo cover	0/A	S	S
Remote engine start	0/A	0/A	0/A
Compass auto-dimming rearview mirror	0/A	0/A	-
Compass auto-dimming rearview mirror with HomeLink®	0/A	0/A	S
Trailer hitch	0/A	0/A	0/A
Stainless doorsill trim plates	0/A	0/A	0/A
Foglights	0/A	0/A	S
Wheel locks	A	A	A
Back-up rearview camera with auto-dimming mirror display	0/A	0/A	-

CX-7 EXTERIOR

Body	Sport	Touring	Grand Touring
Privacy-tint rear glass; rear roof spoiler	S	S	S
Dual body-color power remote outside mirrors	S	S	-
Dual body-color heated power remote outside mirrors	-	-	S
Dual outside mirror side marker lights	-	-	S
Body-color door handles	S	S	-
Chrome door handles	-	-	S
Halogen headlamps	S	S	-
HID (Xenon) low-beam headlamps with automatic shutoff	-	-	S
Halogen fog lights (silver bezel on Grand Touring)	0/A	0/A	S
Dual stainless steel exhaust tips	S	S	S
Variable-intermittent front windshield wipers	S	S	S
Intermittent rear wiper/washer; roof-mounted antenna	S	S	S

CX-7 INTERIOR

Comfort & Convenience	Sport	Touring	Grand Touring
Front one-touch power windows with auto up/down feature and global open	S	S	S
Power door locks with 2-stage unlocking	S	S	S
Remote keyless entry with retractable key	S	S	S

Comfort & Convenience

	Sport	Touring	Grand Touring
Leather-wrapped tilt steering wheel and shift knob	S	S	S
Cruise control with steering-wheel-mounted illuminated controls	S	S	S
CFC-free air conditioning with cabin air filter	S	S	S
Fully automatic climate control	-	-	S
Center console armrest with lockable storage compartment	S	S	S
Heater/defroster with rear heater ducts; rear window defogger	S	S	S
Dual front 12V power points	S	S	S
Center instrument display panel	S	S	S
Electroluminescent gauges with blue indirect lighting	-	-	S
Exterior temperature display	-	-	S
Blue indirect interior lighting	-	-	S
Silver interior door handles	-	-	S
Compass auto-dimming rearview mirror with HomeLink	0/A	0/A	S
Front-door storage pockets with bottle holders	S	S	S
Dual visor vanity mirrors with covers and extensions	S	S	S
Front and rear cup holders	S	S	S
Front map lights; cargo-area lights	S	S	S
Driver's left footrest	S	S	S
Retractable cargo cover	0/A	S	S
Rear-seat center armrest with cup holders	S	S	S

Seating & Trim	Sport	Touring	Grand Touring
5-passenger seating capacity	S	S	S
60/40 split fold-down rear seatback with adjustable headrests and armrest	S	S	S
Reclining front bucket seats with adjustable headrests	S	S	S
8-way power-adjustable driver's seat	0	S	S
Adjustable driver's seat lumbar support	0	S	S
Heated front seats	0	S	S
Carpet floor mats	S	S	S
Front seatback map pockets	S	S	S
Cloth-trimmed seats	S	-	-
Touring leather-trimmed seats	-	S	-
Grand Touring leather-trimmed seats w/accent stripe; Piano Black accent trim	-	-	S

Audio

	Sport	Touring	Grand Touring
AM/FM/CD/MP3-compatible stereo with 4 speakers	S	S	S
Steering-wheel-mounted illuminated audio controls	S	S	S
Auxiliary-audio input jack	S	S	S
SIRIUS Satellite Radio-ready head unit‡	S	S	S

CX-7 SAFETY & SECURITY

Safety & Security	Sport	Touring	Grand Touring
Advanced dual front air bags**	S	S	S
Front side-impact air bags and side-impact air curtains** (front & rear coverage) with rollover protection	S	S	S
Side-impact door beams	S	S	S
3-point seat belts for all seating positions	S	S	S
LATCH rear-seat child-safety-seat anchors	S	S	S
Tire-Pressure Monitoring System (TPMS)	S	S	S
Passenger window lockout feature—driver-controlled	S	S	S
Illuminated remote keyless entry system with panic button	S	S	S
Engine-immobilizer anti-theft system	S	S	S

CX-7 COLOR COMBINATIONS



BRILLIANT BLACK CLEARCOAT

TRIM LEVEL	INTERIOR FABRICS
CX-7 Sport	Black or Sand Cloth
CX-7 Touring	Black or Sand Leather
CX-7 Grand Touring	Black or Sand GT Leather



GALAXY GRAY MICA

TRIM LEVEL	INTERIOR FABRICS
CX-7 Sport	Black Cloth
CX-7 Touring	Black Leather
CX-7 Grand Touring	Black GT Leather



CRYSTAL WHITE PEARL MICA

TRIM LEVEL	INTERIOR FABRICS
CX-7 Sport	Black or Sand Cloth
CX-7 Touring	Black or Sand Leather
CX-7 Grand Touring	Black or Sand GT Leather



LIQUID PLATINUM METALLIC

TRIM LEVEL	INTERIOR FABRICS
CX-7 Sport	Black Cloth
CX-7 Touring	Black Leather
CX-7 Grand Touring	Black GT Leather



BLACK CHERRY MICA

TRIM LEVEL	INTERIOR FABRICS
CX-7 Sport	Sand Cloth
CX-7 Touring	Sand Leather
CX-7 Grand Touring	Sand GT Leather



TRUE SILVER METALLIC

TRIM LEVEL	INTERIOR FABRICS
CX-7 Sport	Black Cloth
CX-7 Touring	Black Leather
CX-7 Grand Touring	Black GT Leather



COPPER RED MICA

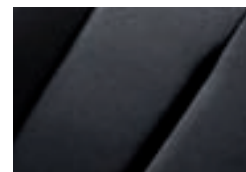
TRIM LEVEL	INTERIOR FABRICS
CX-7 Sport	Sand Cloth
CX-7 Touring	Sand Leather
CX-7 Grand Touring	Sand GT Leather



ICY BLUE METALLIC

TRIM LEVEL	INTERIOR FABRICS
CX-7 Sport	Sand Cloth
CX-7 Touring	Sand Leather
CX-7 Grand Touring	Sand GT Leather

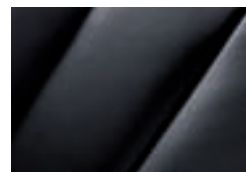
CX-7 UPHOLSTERY



BLACK CLOTH
CX-7 Sport



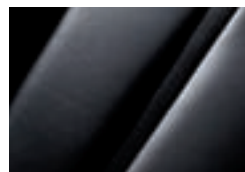
SAND CLOTH
CX-7 Sport



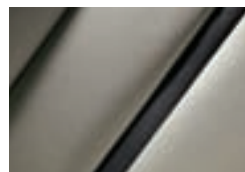
BLACK LEATHER
CX-7 Touring



SAND LEATHER
CX-7 Touring



BLACK GT LEATHER
CX-7 Grand Touring

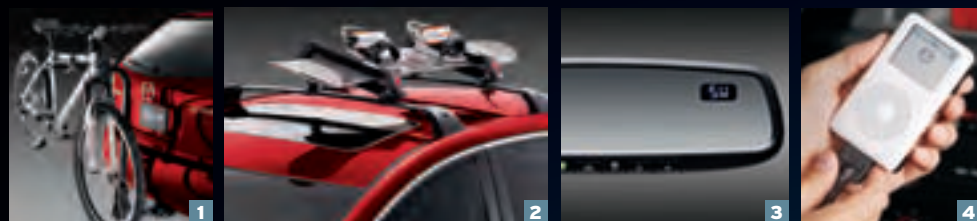


SAND GT LEATHER
CX-7 Grand Touring

PRODUCT CHANGES AND OPTIONS AVAILABILITY: Following publication of this brochure, certain changes in standard equipment, options, prices and the like, or product delays may have occurred which would not be included in these pages. Your Mazda Dealer is your best source for up-to-date information. Mazda reserves the right to change product specifications at any time without incurring obligations. Options shown or described in this brochure are available at extra cost and may be offered only in combination with other options or subject to additional ordering requirements or limitations.

Accessories Guaranteed To Go The Distance.

One of the most enjoyable aspects of buying a new Mazda CX-7 is being able to enhance its appearance and performance with Genuine Mazda Accessories. What's more, all Genuine Mazda Accessories installed by your Mazda Dealer, prior to or at initial vehicle retail delivery, carry the same new-vehicle limited warranty as your new Mazda. See your dealer for details.



1 A Bike Carrier, Trailer Hitch-Mounted, allows you to quickly and easily secure up to two bicycles to the rear of your vehicle with minimal lifting. **2 A Ski/Snowboard Carrier** attaches to the CX-7 roof rack (sold separately), holds up to four pairs of skis, or two snowboards, and provides locks for extra security. **3 The Compass Auto-Dimming Mirror With HomeLink®** features a bright LED compass readout and also automatically dims to reduce glare from headlights of cars behind you. The built-in HomeLink controller activates any system-connected lights, gates, etc., in your home (may require additional components). **4 Mazda's iPod® Integration Module** makes it a lot easier to take your Apple® iPod along for the ride. The iPod Integration Module allows you to play your iPod through your Mazda CX-7 audio system with crystal-clear sound and a built-in battery charger. Works with all 30-pin, dock-connector-equipped iPods.*

- | | |
|---|--|
| Aero Package
(Front Air Dam and Rear Spoiler) | DVD Rear-Seat Entertainment System |
| Front Under Guard | Back-Up Camera with Auto-Dimming Mirror Display |
| Rear Under Guard | Remote Engine Start |
| Fog Light Kit | SIRIUS Satellite Radio® Receiver Kit† |
| Front Mask | 3.5 mm Audio Cable |
| Splash Guards (Front and Rear) | Motorola Portable Bluetooth® Car Kit T305 |
| Roof Rack | Compass Auto-Dimming Mirror |
| Bike Carrier (Roof Rack-Mounted) | Portable Navigation Device by Garmin® |
| Car Cover | Roadside Assistance Kit |
| Car Cover Cable Lock | Rear Bumper Guard |
| Hood Bug Deflector | Stainless Doorsill Trim Plates |
| Moonroof Wind Deflector | All-Weather Floor Mats |
| Cargo Box (Roof Rack-Mounted) | Cargo Cover, Retractable |
| Luggage Basket w/Stretch Net (Roof Rack-Mounted) | Cargo Net |
| Trailer Hitch | Cargo Tray |
| Windshield Sunscreen | First Aid Kit |
| Cigarette Lighter | Wheel Locks, Chrome |
| Ashtray, Cup Type | Touch-Up Paint |

* iPod not included. See your dealer for compatibility conditions and limitations on installation. Mazda's iPod Integration Module cannot be installed on vehicles with Technology Package. Apple and iPod are registered trademarks of Apple Inc.

† **SIRIUS** reception requires a subscription and Mazda satellite radio receiver accessory kit. Available only in the U.S., except Alaska and Hawaii.

Zoom-Zoom And Peace Of Mind Go Hand In Hand.

We want your new Mazda CX-7 to be a source of pride, exhilaration and peace of mind for years to come. Which is why every new 2009 Mazda sold in the U.S. is protected by all of the following:

- A 3-year/36,000-mile[‡] "bumper-to-bumper" limited warranty
- A 3-year/36,000-mile[‡] 24/7 Emergency Roadside Assistance program
- A 5-year/60,000-mile[‡] limited powertrain warranty
- A 5-year/unlimited-mileage warranty against body rust-through

For details, please see your Mazda Dealer, visit MazdaUSA.com, or call toll-free 800-639-1000.

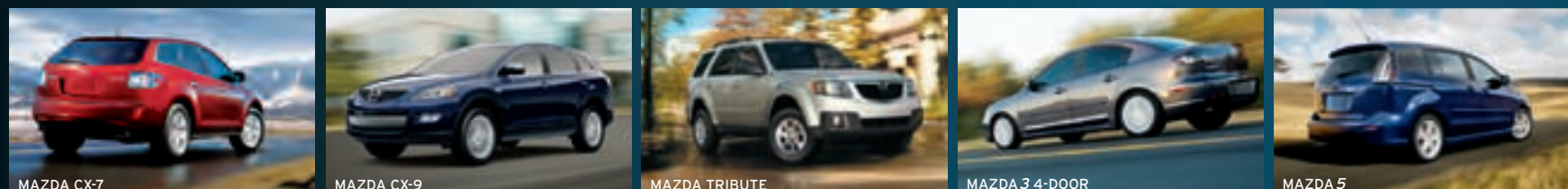
[‡] Whichever comes first.

Making The Zoom-Zoom Connection Easier To Make.

MAZDA Whether you're buying or leasing a new Mazda, Certified Pre-Owned Mazda or a used vehicle, Mazda American Credit (MAC) can make the financing process a more convenient and more satisfying experience. It all starts with first-class customer service and competitive rates. To find out which MAC purchase or lease plan best meets your needs, talk to your Mazda Dealer. Or for more information, visit MazdaCredit.com.



Thump-Thump goes the heart. And for 2009, Mazda makes it easier to follow yours by building ten uniquely stylish, insightful and spirited vehicles. Exhilarating sports cars. Sport compacts. Sport sedans. Crossover SUVs. Even trucks. Each one passionately designed and purposefully crafted to deliver Zoom-Zoom. Every time you turn the key. Mazda. Always the soul of a sports car.®



ZOOM-ZOOM. FOREVER.