



2009 Mazda  
B-SERIES TRUCK

ZOOM-ZOOM

2009 Mazda  
B-SERIES TRUCK



**Solid value, plus plenty of Zoom-Zoom.** Now more than ever, you want a truck that pulls its weight. A rugged, dependable truck that knows how to squeeze every mile out of a gallon of gas. And the more standard features, the better. Enter the 2009 Mazda B-Series. Whether you choose the easy-on-the-wallet B2300 or the roomy 4-Door B4000 Cab Plus 4, you'll get a truck that fits the bill, and your needs, perfectly. Take the Mazda B4000. Along with 4-door convenience and versatility, it serves up a healthy portion of go-anywhere muscle, thanks to its torquey 4.0-liter 207-hp V6 engine and shift-on-the-fly 4-wheel drive. And its Mazda B2300 stablemate, with a 4-cylinder 2.3-liter 16-valve 143-hp engine underhood, keeps fuel costs down without sacrificing performance. But whichever B-Series you choose, it comes equipped with standard features that include a sporty 5-speed manual transmission, power rack-and-pinion steering and power front disc brakes with a 4-wheel Anti-lock Brake System (ABS). Should you also desire a notch more comfort and style, the B2300's available SE-5 Package adds alloy wheels, air conditioning, tilt wheel, cruise control and an AM/FM/CD audio system with an auxiliary-audio input jack. It's like having the comforts of home. In a home that can handle a 1200-pound payload.\*



#### B-SERIES TRUCK SPECIFICATIONS & CAPACITIES

Specifications	B2300 4x2 Reg. Cab	B4000 4x4 Cab Plus 4
	Engine size and type	2.3-liter 4-cylinder
Valvetrain	DOHC 16-valve	SOHC 12-valve
Bore and stroke (in)	3.45 x 3.70	3.95 x 3.35
Ignition system	Breakerless electronic	Breakerless electronic
Fuel injection	Electronic multipoint	Electronic multipoint
Horsepower, SAE net	143 @ 5250 rpm	207 @ 5250 rpm
Torque, SAE net (lb-ft)	154 @ 3750 rpm	238 @ 3000 rpm
Fuel requirement	Regular unleaded gasoline	
Fuel economy (EPA estimated mpg, city/hwy)	4x2 Manual 21/26 4x2 Automatic 19/24	4x4 Manual 15/19 4x4 Automatic 14/18
Base curb weight (lb)	2999	3662

Exterior Dimensions (in)	B2300 4x2 Reg. Cab	B4000 4x4 Cab Plus 4
	Wheelbase	111.6
Overall length	187.5	202.9
Height (empty)	64.9	67.5
Width	69.4	70.3
Track, front	58.6	58.6
Track, rear	57.3	57.3
Cargo bed length	71.8	71.8
Cargo bed depth	16.5	16.5
Cargo bed width, maximum (at floor)	52.0	52.0
Cargo bed width, between wheelhouses	40.4	40.4
Ground clearance (at rear axle)	6.7	7.9
Approach angle (minimum)	21°	28°
Departure angle (minimum)	15°	20°

Interior Dimensions (in)	Regular Cab	Cab Plus 4
	Front headroom	39.2
Rear headroom	-	35.6
Front legroom	42.4	42.2
Rear legroom	-	40.3
Front shoulder room	54.5	53.8
Rear shoulder room	-	15.3
<b>Capacities</b>		
Fuel capacity (U.S. gallons)	16.5	19.5

#### B-SERIES TRUCK ENGINE & MECHANICAL

Engine & Transmission	B2300 4x2 Reg. Cab	B4000 4x4 Cab Plus 4	
	2.3L DOHC 16-valve 4-cylinder engine with 143 hp	S	-
4.0L SOHC 12-valve V6 engine with 207 hp	-	S	
5-speed manual overdrive transmission	S	S	
5-speed automatic overdrive transmission	0	0	
Shift-on-the-fly 4WD system/dual-range transfer case	-	S	
<b>Transmission Ratios</b>	Manual B2300	Manual B4000	Automatic B2300/B4000
1st gear	3.72	3.40	2.47
2nd gear	2.20	2.05	1.85
3rd gear	1.50	1.31	1.47
4th gear	1.00	1.00	1.00
5th gear	0.79	0.79	0.75
<b>Transfer Case Ratios (4x4)</b>			
Low	-	2.48	2.48
High	-	1.00	1.00

Suspension & Brakes	B2300 4x2 Reg. Cab	B4000 4x4 Cab Plus 4
	Steering ratio	22.0:1
Turning circle (curb-to-curb, ft)	37.7	43.0
Front independent double-wishbone suspension	S	-
Raised front independent double-wishbone suspension	-	S
Power-assisted rack-and-pinion steering	S	S
4-wheel Anti-lock Brake System (ABS)	S	S
Ventilated front disc brakes (in)	10.3	11.3
Rear drum brakes (in)	9.0	10.0

#### B-SERIES TRUCK EXTERIOR

Body	B2300 4x2 Reg. Cab	B4000 4x4 Cab Plus 4
	Black bumpers and grille	S
Bright bumpers and grille	P	-
Black wheel-arch moldings	-	S
Black front and rear mud guards	S	S
Dual black manual remote mirrors	S	S
Solar-controlled tinted glass	S	S
Trailer receiver hitch (Class III frame-mounted)	S	S
Trailer-wiring harness	S	S
Clear-lens halogen headlights	S	S
Clear-lens halogen fog lights	A	A
2-speed variable-intermittent windshield wipers	S	S

#### B-SERIES TRUCK PAYLOAD/TRAILER WEIGHTS (LB)

			Regular Cab		Cab Plus 4		
			Axle Ratio	Maximum Payload/GVWR	Maximum Trailer Wt./GCWR	Maximum Payload/GVWR	Maximum Trailer Wt./GCWR
B2300	4x2	MT	3.73	1200/4280	1600/4800	-	-
		AT	4.10	1200/4280	2260/5500	-	-
B4000	4x4	MT	4.10	-	-	1260/5120	3140/7000
		AT	4.10	-	-	1260/5120	5600/9500

\* Payload weights shown/cited are maximums and must be reduced by the weight of any passengers and optional equipment.

Tires & Wheels	B2300 4x2 Reg. Cab	B4000 4x4 Cab Plus 4
	15-inch styled steel wheels; P225/70R15 all-season tires	S
15-inch styled steel wheels; P235/75R15 all-terrain tires	-	S
15-inch alloy wheels; P225/70R15 all-season tires	P/A	-

#### B-SERIES TRUCK INTERIOR

Comfort & Convenience	B2300 4x2 Reg. Cab	B4000 4x4 Cab Plus 4
	Cloth-covered sun visors	S
A-pillar-mounted passenger-assist grips	S	S
Floor console with dual cup holders	S	S
Storage bin with 12-volt power outlet	S	S
Cruise control with steering-wheel-mounted controls	P	-
Tachometer and engine coolant temperature gauge	S	S
Carbon-fiber-look center dash trim	S	S
Tilt steering wheel	P	-
CFC-free air conditioning	O/P	S
Fold-down center armrest with storage compartment	S	S

#### Seating & Trim

60/40 split-bench seat with cloth upholstery; vinyl floor covering	S	-
60/40 split-bench seat with cloth upholstery; full cut-pile carpeting	P	S
Fold-down rear vinyl jump seats with lap belts	-	S

#### Audio

AM/FM stereo with 2 speakers and digital clock	S	S
AM/FM/CD stereo with 4 speakers and digital clock	P	-
Auxiliary-audio input jack	P	-

#### B-SERIES TRUCK SAFETY & SECURITY

Safety & Security	B2300 4x2 Reg. Cab	B4000 4x4 Cab Plus 4
	Dual front air bags* with driver's seat position and passenger-weight sensors	S
Tire-Pressure Monitoring System (TPMS)	S	S
3-point outboard front seat belts with pretensioners and height-adjustable shoulder-harness anchors; center lap belt	S	S

S: Standard O: Optional P: Package option A: Dealer-available accessory -/: Not available

GVWR = Gross Vehicle Weight Rating; GCWR = Gross Combined Weight Rating; MT = Manual transmission; AT = Automatic transmission

\* Always wear your seat belt and secure children in appropriate child restraints.

## B-SERIES TRUCK OPTIONS & OPTION PACKAGES

Options/Option Packages	B2300 4x2 Reg. Cab	B4000 4x4 Cab Plus 4
<b>SE-5 Package:</b> 15-inch alloy wheels; P225/70R15 all-season tires; chrome bumpers and grille; tilt steering wheel; full carpeting; carpet floor mats; CFC-free air conditioning; AM/FM/CD stereo; cruise control	0	-
Carpet floor mats	P/A	S
All-weather floor mats	A	A
CFC-free air conditioning	O/P	S
Compass and outside-temperature auto-dimming mirror	O/A	O/A
Compass auto-dimming mirror	O/A	O/A
Door-edge guards, color-keyed	O/A	O/A

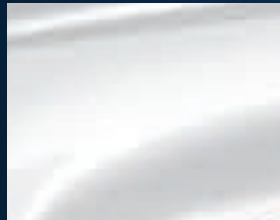
## Options/Option Packages

Options/Option Packages	B2300 4x2 Reg. Cab	B4000 Cab Plus 4
5-speed automatic overdrive transmission	0	0
Bed extender	O/A	O/A
Bedliner	O/A	O/A
Folding storage box	A	A
Tonneau cover	O/A	O/A
Bed-rail caps, black or silver	A	A

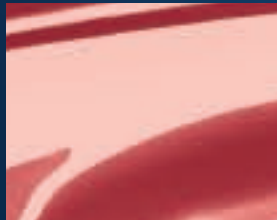
## B-SERIES TRUCK EXTERIOR COLORS



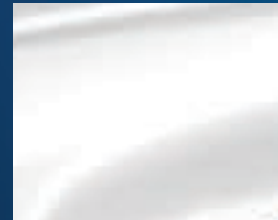
**DARK TITANIUM**



**SILVER METALLIC**



**REDFIRE**



**CLASSIC WHITE**

## B-SERIES TRUCK WHEEL OPTIONS



**15-inch Styled Steel**  
B2300 4x2

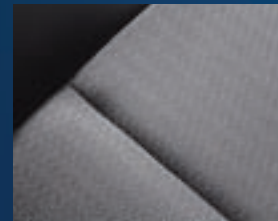


**15-inch Styled Steel**  
B4000 4x4



**15-inch Alloy**  
B2300 SE-5 Package

## B-SERIES TRUCK UPHOLSTERY



**MEDIUM DARK FLINT CLOTH**

**Payload:** Payload weights shown are maximums and must be reduced by the weight of any passengers or optional equipment. **Trailer Weight:** Trailer weights shown are maximums and must be reduced by the weight of any passengers, cargo, hitch or optional equipment in the towing vehicle. The following equipment may also be required: load-carrying hitch for trailers under 2000 lb and load-equalizing hitch for trailers over 2000 lb. Towing a trailer will have an effect on the vehicle's handling, braking, durability, performance and driving economy. For specific information on recommended or required equipment, see your Mazda Dealer. Hitches are available through manufacturers other than Mazda.

**Product Changes and Options Availability:** Following publication of this brochure, certain changes in standard equipment, options, prices and the like, or product delays may have occurred which would not be included in these pages. Your Mazda Dealer is your best source for up-to-date information. Mazda reserves the right to change product specifications at any time without incurring obligations. Options shown or described in this brochure are available at extra cost and may be offered only in combination with other options or subject to additional ordering requirements or limitations.


## Zoom-Zoom And Peace Of Mind Go Hand In Hand.

We want your new Mazda B-Series Truck to be a source of pride, exhilaration and peace of mind for years to come. Which is why every new 2009 Mazda sold in the U.S. is protected by all of the following:

- A 3-year/36,000-mile\* "bumper-to-bumper" limited warranty
- A 3-year/36,000-mile\* 24/7 Emergency Roadside Assistance program
- A 5-year/60,000-mile\* limited powertrain warranty
- A 5-year/unlimited-mileage warranty against body rust-through

For details, please see your Mazda Dealer, visit [MazdaUSA.com](http://MazdaUSA.com), or call toll-free 800-639-1000.

## Making The Zoom-Zoom Connection Easier To Make.

**CHASE**  Whether you're buying or leasing a new Mazda, Certified Pre-Owned Mazda or a used vehicle, Chase Auto Finance can help make the financing process a more convenient and satisfying experience. As one of the largest auto lenders in America, Chase is known for its first-class customer service, wide range of financing options and highly competitive rates. To find out which Chase purchase or lease plan best meets your needs, talk to your Mazda Dealer. Or for more information, visit [MazdaUSA.com](http://MazdaUSA.com).

\* Whichever comes first.