

05 **mazda** TRIBUTE



AVAILABLE 200-HP V6 ENGINE

4-WHEEL INDEPENDENT SUSPENSION

PRECISE RACK-AND-PINION STEERING

SOLID UNIBODY CONSTRUCTION

ANTI-LOCK BRAKE SYSTEM (ABS)

AVAILABLE ELECTRONIC 4-WHEEL DRIVE



PLAY AS YOU GO.

ZOOM-ZOOM



WE GRADE EXHILARATION ON A CURVE. Unlike many SUVs, the Mazda Tribute features a fully independent suspension system for sure-footed handling and superb ride comfort plus an Anti-lock Brake System (ABS) with Electronic Brakeforce Distribution (EBD). Better still, the Tribute *s* is endowed with a potent 200-hp, 3.0-liter, 24-valve, DOHC V6. A responsive, yet fuel-efficient, new 153-hp, 2.3-liter, 16-valve, DOHC I-4 is standard on the Tribute *i*.

MAKE ROOM FOR AN IDEAL BALANCE OF VERSATILITY, POWER AND AGILITY.

In a market swarming with SUVs that are oversized, underpowered or a real handful to maneuver, Mazda Tribute is the exception—an SUV with the soul of a sports car. The Tributes, for example, combines SUV versatility with the spirited performance of a 200-hp, 3.0-liter V6, an electronically controlled 4-speed automatic transmission and front-wheel drive. Equally impressive, its precise rack-and-pinion steering and fully independent suspension system deliver crisp, agile handling. A trait you'll appreciate whether you're slicing through city traffic, hustling down a mountain road or swinging into a tight parking spot.



WELL-EQUIPPED FOR THE LITTLE TRIPS. AND THE BIG ADVENTURES.

Sporty good looks and impressive on-road performance are really only half the story. Because you can easily transform your Mazda Tribute into an all-purpose, all-weather SUV all-star by adding an option or two. With the optional Tow Package, which includes a frame-mounted Class II hitch, a V6-powered Mazda Tribute s can tow up to 3,500 pounds. And with Mazda's optional new electronic 4-wheel drive system, just the right amount of torque is automatically directed to the front and/or rear wheels to enhance traction, vehicle stability and even system durability. To top it off, a handy roof rack* with adjustable crossbars is standard on Mazda Tribute.

*The amount and placement of cargo can significantly affect vehicle handling. Roof-rack payload limited to 100 pounds. See owner's manual for more information. Shown with available roof luggage basket, a Genuine Mazda Accessory.



A FRESH SPIN ON 4WD PERFORMANCE. The Tribute's available new four-wheel drive system features advanced Active Torque Control Coupling (ATCC) technology for improved traction, acceleration and vehicle stability. By electronically monitoring wheel speed and throttle data, the system automatically transfers the right amount of torque to wherever it's needed to meet the changing demands of weather and road conditions.





HOW'S THIS FOR OPENERS? The rear liftgate and window open separately—an insightful feature which lets you transport even 4x8 sheets of plywood.

PROTECT YOUR PRIVACY. A retractable cargo cover is available to conceal cargo, luggage and valuables from prying eyes. When unneeded, it simply rolls up like a windowshade.

MORE FORWARD THINKING. A versatile 60/40 split fold-down rear seatback is standard. Now passengers and extra long cargo, gear or equipment can all share the ride.*

THE MORE YOU PUT INTO IT, THE MORE EXHILARATION YOU GET OUT OF IT.

If you'd like a first-class tour of what's possible in a Mazda Tribute, this "grand opening" is expressly for your benefit. Here, stretched out before your eyes, is an expansive 66.8 cubic feet of cargo space.[†] All created by simply folding the Tribute's rear seatbacks forward to create a conveniently flat load floor. And all waiting to welcome more of your favorite stuff—from building supplies and bikes to outdoor gear and sports equipment. Loading and unloading are also a breeze thanks to the Tribute's high rear liftgate clearance and low cargo area threshold. In short, you'll quickly discover that Tribute is thoughtfully engineered to help you make the most of both work and play.

*Please remember to properly secure all cargo. †Cargo and load capacity limited by weight and distribution.



ABOVE AND BEYOND. In addition to a special overhead storage console for your sunglasses, all three Tribute's option packages include a 6-way power driver's seat, in-dash 6-disc CD changer and more.

FLOOR IT. The Tribute's versatile new floor console serves up ample storage for up to 17 CD cases, a handy built-in storage compartment, a pair of cupholders in front plus twin retractable cupholders in back.



EXPERIENCE THE KIND OF EXUBERANCE YOU CAN TOUCH AS WELL AS FEEL.

Inside the Tribute's thoughtfully appointed cabin, quality materials and careful attention to detail are everywhere you look—from the silver-trimmed gauges and tilt steering wheel to the dual 12-volt power outlets up front and sporty new floor console. And on the Tributes you'll find that even heated front seats with leather-trimmed upholstery* are available. Equally impressive, significant reductions in wind, road and powertrain noise make this year's Tribute the quietest ever.

*Seating surfaces upholstered in leather except for leather-look vinyl on seat side panels, rear sides of seatbacks and other minor areas.



EVERYTHING YOU'RE DRIVING FOR IS NOW WELL WITHIN YOUR REACH.

Unlike many SUVs, Mazda Tribute is actually fun to drive. And its sporty, driver-focused cockpit is a key reason why. All crucial controls are intelligently placed and welcome your input. Large, well-organized gauges deliver vital data at a glance. A new center console places shifter, storage compartments and multiple cupholders all within easy reach. A tilt steering wheel plus power windows, outside mirrors and door locks are standard. As are both the 100-watt, 4-speaker AM/FM/CD audio system and CFC-free air conditioning. When it comes to true driving enjoyment, Mazda Tribute leaves little to be desired.

RIDE THE WAVES. Add the available premium audio system to your Tribute s and enjoy an in-dash 6-disc CD changer, 7 speakers, plus a heart-pounding 190 watts of power. Or add an available Mazda satellite radio receiver accessory kit* and plug into 60 distinct digital streams of commercial-free music plus 40 streams of sports, news and entertainment through SIRIUS Satellite Radio.

*Requires subscription to SIRIUS Satellite Radio. SIRIUS available only in the U.S., except Alaska and Hawaii.



WHEN IT COMES TO SAFETY, WE'VE GOT YOU SURROUNDED.

Complementing Mazda Tribute's compelling blend of style, versatility and spirited performance is a comprehensive arsenal of safety features. Including integral "crumple zones" to help absorb the energy of an impact. Mazda's "Triple H" steel reinforcements in key areas of the roof, floor and body structure. An Anti-lock Brake System (ABS) with Electronic Brakeforce Distribution (EBD) and Brake Assist. Plus advanced 2-stage front air bags* with belt-use, passenger-weight and driver's seat-position sensors. Which means, no matter how far the road takes you and your Mazda Tribute, peace of mind always comes along for the ride.

*Always wear your safety belt and secure children in the rear seat.



SURE STOPPING POWER. All Tributes feature Brake Assist, a special safety mechanism that automatically supplements a driver's pedal effort in an emergency stop situation to maximize the generated braking force and minimize stopping distance.

MORE POINTS OF INTEREST. The Tribute provides 3-point safety belts for all 5 seating positions plus adjustable headrests, front and rear. Side-impact air curtains with rollover protection for front and rear passengers are optional on the Tribute s.





OVERRIDES ALL KNOWN DRESS CODES.

GENUINE MAZDA ACCESSORIES: WHERE STYLE MEETS SUBSTANCE.

Part of the joy of owning a new Mazda Tribute is personalizing it. And the best way to enhance its appearance or function is with Genuine Mazda Accessories. In fact, all Genuine Mazda Accessories installed by your Mazda dealer, prior to or at initial vehicle retail delivery, carry the same new-vehicle limited warranty as your new Mazda Tribute. See your dealer for details.



COMPASS & OUTSIDE TEMPERATURE AUTO-DIMMING MIRROR WITH HOMELINK® This multipurpose rearview mirror combines compass, outside temperature and auto-dimming features with a HomeLink® controller to activate any system-connected lights, gates, alarms, etc. in your home. **DVD ENTERTAINMENT SYSTEM.** Take the show on the road! Our complete Rear-Seat Entertainment System, with 7" full-color flip-down monitor can play DVDs, audio CDs and MP3 CDs. Includes remote control and 2 sets of wireless headphones. **REAR SPOILER.** Add a sporty touch and help keep the rear window free of dust and snow for better visibility.

- Full- or half-front mask
- Hood bug deflector
- Moonroof wind deflector
- Door edge guards
- Side step tubes
- Rear bumper step plate
- Windshield sunscreen
- Compass and outside temperature auto-dimming mirror
- Interior dust and pollen filter
- SIRIUS Satellite Radio receiver
- In-dash 6-disc CD changer
- Cassette player
- MiniDisc player
- All-weather floor mats
- Roof luggage basket with stretch net
- Roof cargo box
- Bike attachment (roof-rack or trailer-hitch mount)
- Ski attachment (roof-rack mount)
- Cargo organizer/cargo tray
- Cargo net
- Cargo divider
- Car cover; car cover cable lock
- First aid kit
- Roadside assistance kit
- Wheel locks
- Engine block heater
- Touch-up paint

EXTERIOR COLORS



MYSTIC BLACK CLEARCOAT

- Mazda Tribute *i*
 - Mazda Tribute *s*
- BUMPER & BODY TRIM**
Molded, Storm Gray
Monochromatic Paint, Mystic Black
- INTERIOR FABRICS**
Dark Flint Gray Cloth
Medium Pebble Beige Cloth or Leather



DARK TITANIUM METALLIC

- Mazda Tribute *i*
 - Mazda Tribute *s*
- BUMPER & BODY TRIM**
Molded, Storm Gray
Monochromatic Paint, Dark Titanium
- INTERIOR FABRICS**
Dark Flint Gray Cloth
Dark Flint Gray Cloth or Leather



REDFIRE METALLIC

- Mazda Tribute *i*
 - Mazda Tribute *s*
- BUMPER & BODY TRIM**
Molded, Storm Gray
Painted, Dark Titanium
- INTERIOR FABRICS**
Dark Flint Gray Cloth
Dark Flint Gray Cloth or Leather



PLATINUM METALLIC

- Mazda Tribute *i*
 - Mazda Tribute *s*
- BUMPER & BODY TRIM**
Molded, Storm Gray
Monochromatic Paint, Platinum Metallic
- INTERIOR FABRICS**
Dark Flint Gray Cloth
Dark Flint Gray Cloth or Leather



DARK TEAL METALLIC

- Mazda Tribute *i*
 - Mazda Tribute *s*
- BUMPER & BODY TRIM**
Molded, Storm Gray
Painted, Dark Titanium
- INTERIOR FABRICS**
Dark Flint Gray Cloth
Dark Flint Gray Cloth or Leather



BLAZING COPPER METALLIC

- Mazda Tribute *i*
 - Mazda Tribute *s*
- BUMPER & BODY TRIM**
Molded, Storm Gray
Painted, Titanium Metallic
- INTERIOR FABRICS**
Dark Flint Gray Cloth
Dark Flint Gray Cloth or Leather



CLASSIC WHITE CLEARCOAT

- Mazda Tribute *i*
 - Mazda Tribute *s*
- BUMPER & BODY TRIM**
Molded, Storm Gray
Painted, Dark Titanium
- INTERIOR FABRICS**
Dark Flint Gray Cloth
Dark Flint Gray Cloth or Leather



LAPIS BLUE METALLIC

- Mazda Tribute *i*
 - Mazda Tribute *s*
- BUMPER & BODY TRIM**
Molded, Storm Gray
Painted, Dark Titanium
- INTERIOR FABRICS**
Dark Flint Gray Cloth
Dark Flint Gray Cloth or Leather



PEBBLE ASH METALLIC

- Mazda Tribute *i*
 - Mazda Tribute *s*
- BUMPER & BODY TRIM**
Molded, Storm Gray
Monochromatic Paint, Pebble Ash
- INTERIOR FABRICS**
Dark Flint Gray Cloth
Medium Pebble Beige Cloth or Leather

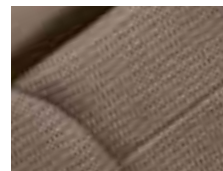
INTERIOR FABRICS



MEDIUM PEBBLE BEIGE CLOTH
Tribute *i*



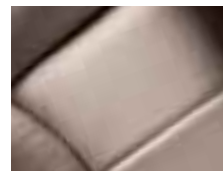
DARK FLINT GRAY CLOTH
Tribute *i*



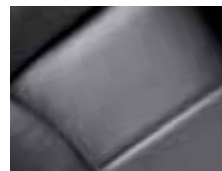
MEDIUM PEBBLE BEIGE CLOTH
Tribute *s*



DARK FLINT GRAY CLOTH
Tribute *s*



MEDIUM PEBBLE BEIGE LEATHER
Optional Tribute *s*



DARK FLINT GRAY LEATHER
Optional Tribute *s*

PRODUCT CHANGES AND OPTIONS AVAILABILITY: Following publication of this brochure, certain changes in standard equipment, options, prices and the like, or product delays may have occurred which would not be included in these pages. Your Mazda dealer is your best source for up-to-date information. Mazda reserves the right to change product specifications at any time without incurring obligations. Options shown or described in this brochure are available at extra cost and may be offered only in combination with other options or subject to additional ordering requirements or limitations.

A MORE EXHILARATING ROUTE TO MAKING THE RIGHT CHOICE.

It starts with the **Mazda Test-Drive Experience**—a uniquely designed road trip engineered to take you miles beyond the ordinary test drive. It's all about putting a Mazda to the test under real-world conditions. Down local streets, highways, on-ramps and off-ramps. Through straightaways, S-curves and corners. It's also all about discovering the superb acceleration, braking, steering, handling and ride quality that every Mazda offers. And rediscovering that fun, connected-to-the-road feeling we call "Zoom-Zoom."

A MORE LIBERATING APPROACH TO OWNER PEACE OF MIND.

Once you become a new Mazda owner, you'll enjoy the peace of mind the **2005 Mazda Driver's Assurance Plan** delivers. It includes the freedom of a **48-month/50,000-mile "bumper-to-bumper" limited warranty**, plus **24/7 Emergency Roadside Assistance**. And should your Mazda Tribute require a warranty repair, the **Mazda Service Transportation Solution** can typically provide another vehicle to drive. After all, we want your new Mazda to be a source of pride and exhilaration for years to come. (See your Mazda dealer for details.)

A MORE COMPELLING WAY TO CONNECT WITH ZOOM-ZOOM.

Speaking of exhilaration, add Mazda's Web site to your list of must-see destinations. You can preview all of the new Mazdas. Look into seasonal incentives or special service offers. Pick up maintenance tips. Visit the Mazda Performance Corner for updates on driving technology, tuning and motorsports. Interactively "build" the Mazda Tribute of your dreams and see how it will look. Request a quote. Even locate a Mazda dealer.

It all translates into a lot more Zoom-Zoom at: **MazdaUSA.com**



