

1982 DODGE **aries k**



# 1982 DODGE aries k

...America's Driving Machine.

## THE ROAD TO SUCCESS STARTS HERE.

Thanks, America! You made Dodge Aries the success that it is today because we made it to your specifications.

It took hundreds of designers, engineers and product planners thousands of hours to develop, test and perfect a car incorporating the latest automotive technology to meet your tough standards.

Dodge Aries is no ordinary car. But then, you made extraordinary demands . . . for fuel economy, high quality design, reliability . . . VALUE . . . in a front-wheel drive family-sized car.

It's Aries, America's highest mileage six-passenger car at **26** EPA EST MPG, 41 estimated highway.\* Accolades from owners and industry insiders alike, plus prestigious awards—including the

highly acclaimed 1981 *Motor Trend* Car of the Year title—prove that Aries is the right kind of car for today's driving needs.

Available in two-door, four-door and wagon models,

Aries manages to fulfill all your space requirement needs. And its mid-size offers plenty of interior room for six full-sized adults. That's because Chrysler's advanced front-wheel drive technology places all drive train components forward of the passenger compartment. With the drive shaft repositioned away from the passenger area, there's more usable space inside.



Aries standard power plant—Chrysler's proven 2.2-liter overhead cam engine—has been designed to provide exceptionally reliable performance. What's more, the Trans-4 comes with an electronic fuel control system for added efficiency, and hydraulic valve lash adjusters for quiet operation.

You may be pleasantly surprised to discover how quietly and smoothly Aries actually rides . . . how responsively it handles . . . how quickly it corners . . . and how well it hugs the road. These are the results of many finely tuned, tested and proven engineering features working together in perfect harmony

. . . to make Aries a pure driving delight.

So isn't it time you joined the tens of thousands of Americans satisfying their transportation needs in an Aries? The family-sized car designed for the eighties.

You'll find important information about Aries value, engineering and styling features—and the complete Aries model lineup—on the pages ahead.

\*See the EPA EST MPG number for comparison. Fuel mileage may differ depending upon speed, weather and trip length. Actual highway mileage will probably be lower than highway estimate. California mileage is 24 EPA EST MPG, 36 estimated highway. Estimates for two-door and four-door sedans only; see page 12 for wagon estimates.

**About this catalog.** We have tried to make this catalog as complete as possible. And we hope you find it useful. However, since the time of printing, some of the information you'll find here may have been updated. Your dealer has details, and you should ask him for current information before ordering.

Some of the equipment shown or described throughout this catalog is available at extra cost.

## DODGE ARIES. THREE WAYS TO GO.

By now, you're probably sold on Dodge Aries for a number of reasons. Most likely quality and value, plus important engineering features, combine to make Aries your *Number One Choice*. But which Aries model will you choose?

First, there's the sporty, contemporary Aries two-door sedan. It's one very special . . . and personal means of transportation. Next comes the very elegant and so stylish four-door sedan. It's especially fitting for the entire family. And then there's the all-purpose Aries four-door wagon, the first front-wheel drive midsize station wagon ever made in America.

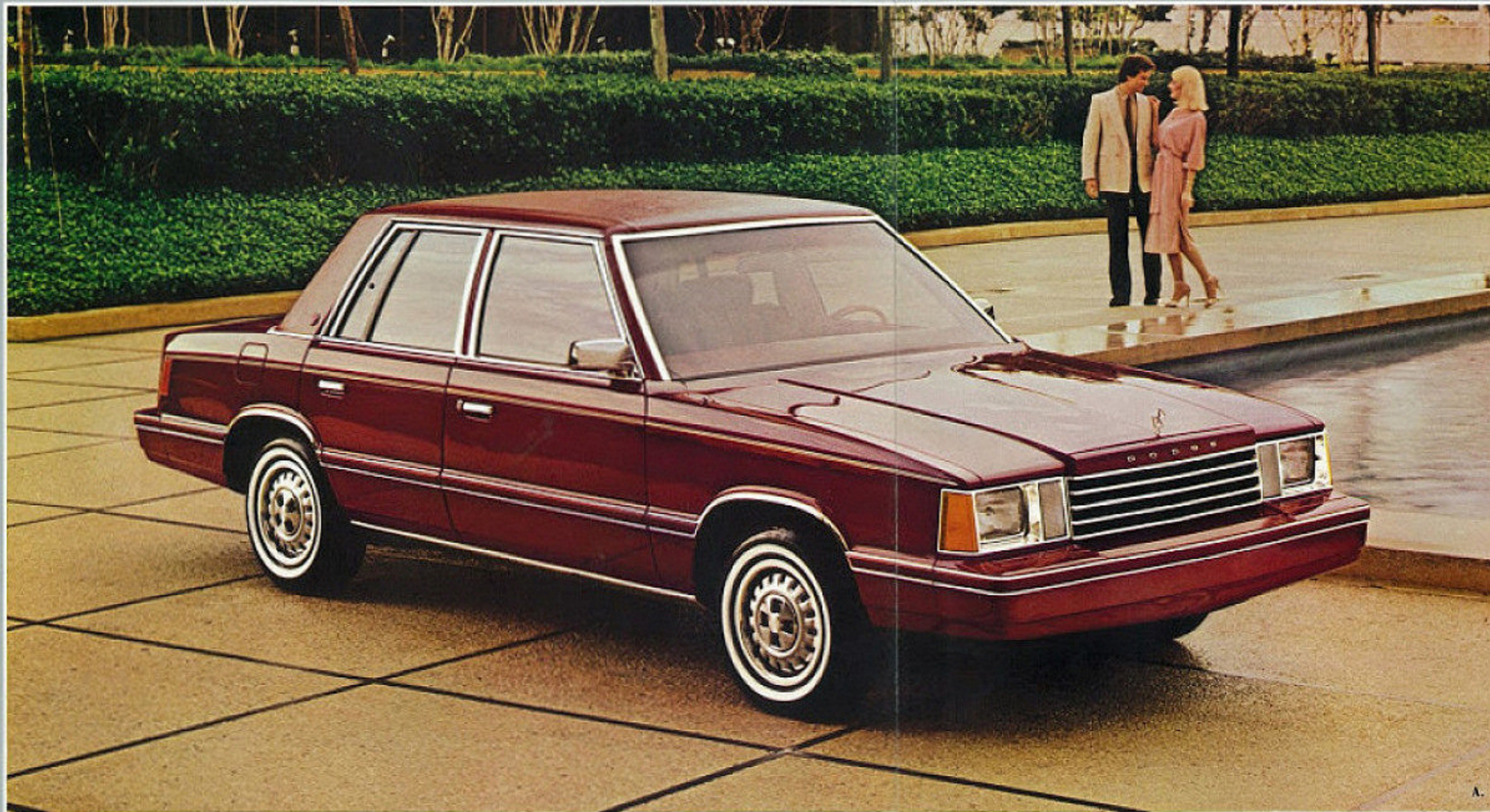
As soon as you select the Aries model that is right for you, how will you equip it? Dodge offers three ways to go.

There is the surprisingly well-appointed and lowest-priced base Aries (available in two- and four-door sedans only), providing exceptional value for the budget-minded. (See pages 14 and 15.) Or the dressed-up Aries Custom, with added details inside and out. Including a luxury two-spoke color-keyed steering wheel, Digital clock, Dual horns. And bright door frame and belt moldings. Or the exquisitely trimmed Aries S.E., the most complete Aries, featuring everything from power steering and power brakes to halogen headlamps and deluxe wheel covers.

Your final decision is strictly "optional." You'll find a wide range of features and accessories available for all Aries models. (See pages 16-17.)

And lest we forget why you came to Aries in the first place . . . those fine engineering features mentioned above come standard on *all* models and styles (see pages 6 and 7), helping assure you of a consistently smooth ride and exceptional driving pleasure.

A. Aries S.E. four-door in Morocco Red.  
B. Premium cloth bench seats with center armrest are standard on all Aries S.E. models. Shown in Red. C. Aries S.E. Wagon in Pearl White with standard woodgrain appliques.  
Aries S.E. two-door in Light Seaspray Green.

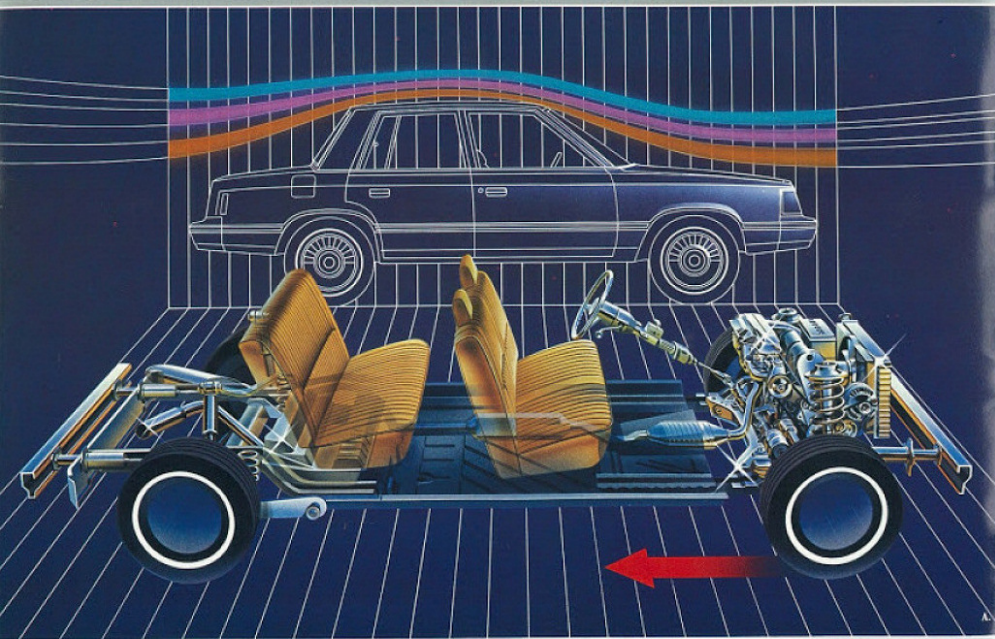


A.

B.



## DODGE ARIES. AT CHRYSLER, QUALITY IS A SCIENCE.



B.

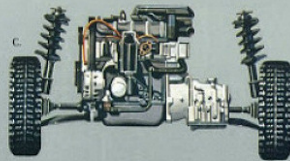
Chrysler Corporation was America's first manufacturer to build high-mileage front-wheel drive cars. Today, with over 30 billion miles of experience under actual operating conditions, Chrysler Corporation engineers are in the enviable position of being able to combine their advanced technology and expertise with practical, hands-on experience. This investment in front-wheel drive technology has produced a second generation of front-wheel drive cars that you can have confidence in.

Naturally, our time-proven technology starts up front with Aries' front-wheel drive. The engine is mounted transversely under the hood to reduce weight and allow more space for passengers. Half a dozen people can be accommodated because there's no transmission or drive-shaft tunnel to intrude into the passenger area. With the engine directly over the drive wheels, its weight is exactly where it will do the best job on slippery surfaces.

Some people still associate riding comfort with weight. Aries takes a different approach to achieving a smooth and quiet ride. Here it's the result of a properly designed and tuned suspension system. A unique Iso-Strut design,

front coil spring over shock absorber system with linkless anti-sway bar makes for Aries' superb riding comfort. The rear suspension provides coil springs, shock absorbers and trailing links fore and aft. A transverse track bar helps put Aries' ride on "the mild side" even in turns. Both front and rear suspensions are mounted to the chassis through rubber-mounted attachment points to help soak up road shock and provide sound insulation for a truly quiet ride.

On top of it all, there's Dodge Aries' aerodynamically designed body which helps minimize wind resistance for improved efficiency.



C.

And Aries' low center of gravity and radial ply tires help it hug the road as you put it through its paces.

With Aries' advanced 2.2-liter Trac-4 engine, Dodge's engineering expertise has again moved to the forefront. This modern overhead camshaft engine weighs only 295.8 pounds and makes Aries one of the better balanced front-wheel drive cars, with only 60 percent of its weight up front.

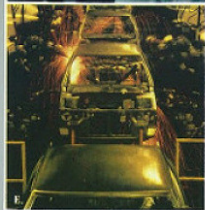
Its efficiency is further enhanced by the electronic fuel control system. Here, seven sensing devices provide input to a mini-computer that, in turn, adjusts spark timing and the fuel-to-air mixture.

And when you consider efficiency, consider Aries' excellent ease and economy of service. With its convenient accessibility, most routine maintenance can be easily handled by the driveway mechanic. If dealer service is needed, your bills will probably be lower because of the service-consideration features built into Aries.

Some of the world's most advanced engineering ensures that Aries is one of the best designed and best built fuel-efficient cars on the road today.



D.



A. Aries' aerodynamics and front-wheel drive add to its efficiency. B. Aries has room for six, and its 15-cubic-foot trunk holds loads of luggage. C. Most of Aries' routine maintenance items are in front and easy to reach. D. Computers were used extensively in Aries' design and development. E. All Aries are assembled with the aid of automated welders.

## ARIES SEDAN. A FAMILY FRIEND.



The New Chrysler Corporation cordially invites you . . . your family . . . your friends . . . to meet our Dodge Aries sedan. Yes. Experience four-door convenience, four-door comfort, and a fuel-efficient front-wheel drive ride.

Come in. Bring the whole family. Sit right down and make yourself at home in the relaxed interior environment that awaits you and five other passengers. You'll immediately see why most people's first favorable impression is that Aries is one very roomy midsize car.

Even in back, where a spacious trunk provides 15 cubic feet of safe storage space for all kinds of gear. Perfect for a family on the go!

With twelve exterior and five interior colors to choose from, Aries is sure to add a handsome splash to your family portrait. And there are more ways to personalize Aries. Including a full vinyl roof, available at extra cost. In seven coordinating shades. Body-side stripes, sun roof, and a wide selection of wheels and wheel covers are also available. . . . once you decide how dressy you want your Aries to be.

Dependable, reliable. . . that's Aries. Because Dodge designed it with your family's well-being in mind. Take a look out the windows. The expansive glass area helps ensure clear visibility.

Then take Aries for a ride. Front-wheel drive. Rack-and-pinion steering. Front disc brakes. And a smooth, quiet running 2.2-liter four-cylinder engine. Together they help enhance your driving pleasure. All in all, Aries provides a winning combination of proven engineering features designed to pull you through rain, wind and snow,



help you hug the road, and add to your sure-stopping confidence.

Family, friends, Aries and you. Make it a party—block after block, mile after mile—when everyone gets together with your new family friend. 1982 Dodge Aries sedan.



A. Aries Custom four-door sedan in Burnished Silver Metallic. B. Aries' standard instrumentation features a large, easy-to-read speedometer and fuel gauge as well as various handy warning lights. The AM/FM stereo radio and air conditioning shown are optional. C. Aries Custom's standard pleated cloth-and-vinyl bench seating. Shown in Red. Also available in Green, Blue, Cashmere. D. Aries' standard 2.2-liter overhead cam Trans-4 engine . . . one of the most modern four-cylinder power plants on the road today. The Trans-4 abounds with quality engineering features such as self-adjusting hydraulic valve lifters and electronic ignition.

**DODGE ARIES TWO-DOOR. ALTERNATIVE TRANSPORTATION WITH A DIFFERENCE.**



Try Dodge Aries two-door sedan on for size... for immediate relief from those small, econo-car confinement blues. Aries won't cramp your style. With its clean sheet metal design, the look is definitely distinguished, distinctive, and undeniably contemporary.

And with 111 cubic feet of combined passenger and cargo volume, Aries won't cramp your legs, head or shoulders. You'll enjoy sitting... and stretching... on Aries' remarkably comfortable and soft optional bucket seats with dual recliners, available in a variety of colors, upholstery and styles depending on which two-door model you choose.

You can be sure that packed inside are a host of comfort and convenience features. For instance, there are Aries' standard deep rosewood tone appliques on the instrument panel with easy-to-read dials. Then notice how the important controls—for the heater, optional air conditioner and the variety of available sound systems—have been placed within easy reach of you, the driver, and your front seat riders. These are the added details that count... and set Aries apart from the competition.

In the Aries Custom, you get the same exterior and chassis features available on Aries, plus door frame moldings, color-keyed quarter window louvers, and bright accents on taillamps. Or go all the way in style with the Aries S.E., which adds deluxe wheel covers, power brakes, power steering, a bright remote control outside mirror on the driver's side, bright deck lid molding, and a Special Edition plaque on the rear roof pillars to an already long list of standard equipment.

You'll find even more to like about Aries when you start to drive. Aries takes to the open road like a whip through the air, putting you in control with front-wheel drive for improved traction and stability.

Obviously, Aries provides plenty of under-the-hood action to satisfy all your ideas of what a contemporary car should be—while it more than lives up to your expectations in exterior style and interior comfort.

We think you'll agree. Dodge Aries two-door sedan is quite an alternative.

**A.** Aries Custom in Black. **B.** Aries Custom two-door in Pearl White, with optional cabriolet roof. **C.** Aries Custom's standard cloth-and-vinyl bench seats in Cashmere. **D.** Aries S.E.'s optional all-cloth Premium bucket seats with dual recliners, shown in Red.

## DODGE ARIES WAGON. NOW YOU CAN HAVE THE GOOD LIFE AND TAKE IT WITH YOU, TOO.

What's your definition of "The Good Life"? Perhaps it's recreational outings with your family. Maybe it's weekend trips with five of your best friends. Or antique hunting on your own. Whatever it is, consider how much more enjoyable it could be with an '82 Aries wagon.

Dodge's handsome midsize wagon is a fun way to move six people, or 69.2 cubic feet of cargo with the rear seat folded down. That's because—unlike a lot of other wagons on the market today—Aries is trim, agile and responsive.

That's due in no small measure to its remarkable front-wheel drive technology, its responsive rack-and-pinion steering and its exhilarating—yet efficient—Trans-4 engine.

Front-wheel drive makes Aries roomy on the inside, yet surprisingly compact in exterior dimensions. And Aries wagon's front-wheel drive provides excellent traction, stability and riding comfort in a lightweight package.

Take an Aries wagon for a test drive and see what we mean. Then take a look at its EPA mileage estimates: **31** EST MPG,\* 40 estimated highway. That's high technology at work for you.

Now direct your attention to the roomy, carpeted cargo area that's easily accessible from the easy-to-operate rear liftgate. Continue to the rich all-cloth interior. It's standard on Aries S.E. wagons (Vinyl standard on Custom models). Next, shift your gaze to the distinctive exterior. It features standard body-side and liftgate applique in a handsome woodgrain finish, along with stylish deluxe wheel covers (optional 14" luxury shown). And there's a Custom model that packs a lot of personality as well... for a truly affordable price.

\*For the EST MPG number for comparison. Your mileage may differ depending upon speed, weather and trip length. Actual highway mileage will probably be lower than highway mileage. Customized mileage for wagons is 27-31 EST MPG. All mileage in highway.

**A.** Aries S.E. wagon in Pearl White. **B.** Aries Custom wagon in Daystar Blue Metallic. **C.** Aries S.E. wagon's standard cloth bench seating with folding center armrest, shown in Cashmere. **D.** There's 69.2 cubic feet of carpeted cargo area in every Aries wagon.









## DODGE FOR 1982

**COLT.** Front-wheel drive economy and fun. The five-passenger hatchback import with the accent on value.



**CHALLENGER.** Sporty coupe styling, handling and performance in a surprisingly efficient import.



**OMNI.** Miser, Custom or E-Type. Carry it off in style. In a front-wheel drive, five-passenger hatchback that goes and goes and goes.



**024.** Miser for efficiency. Custom for class. Charger 2.2 for get up and go. There's a little of each in every 024 front-wheel drive hatchback.



**DODGE 400.** The sporty, personal, front-wheel drive two-door that leads the way in high technology for today and tomorrow.



**MIRADA.** The great American road car is alive and well... and looking better than ever.



**DIPLOMAT.** Your passport to luxury in a six-passenger four-door with room, ride and comfort to spare.



**DODGE WAGON.** Get a load in this one! Seats from six to fifteen passengers depending on the model you choose.



**RAMCHARGER.** The sport utility vehicle with style to spare. Two- and four-wheel drive models to choose from.



**RAM 50.** The little import pickup that's sporty on the inside, good-looking on the outside, and Ram-Tough underneath.



## EXTERIOR COLORS



NOTE:

Due to occasional printing irregularities, the colors shown may vary slightly from actual hues. See your Dodge dealer for accurate color chips.

## Dimensions, Weight and Capacity

	Two-Door Sedan	Four-Door Sedan	Four-Door Wagon
Length <sup>1</sup>	176.0"	176.0"	176.2"
Width	68.6"	68.6"	68.6"
Height	52.3"	52.7"	52.4"
Wheelbase	99.9"	99.9"	99.9"
Turning Diameter	34.6'	34.6'	34.6'
Curb Weight <sup>2</sup>	2,333 lbs	2,332 lbs	2,412 lbs
Track—front	57.6"	57.6"	57.6"
—rear	57.0"	57.0"	57.0"
Cargo Capacity (est.)	15.0 cu ft	15.0 cu ft	34.2 cu ft <sup>3</sup>
Passenger Capacity	6	6	6
Fuel Capacity	13 gal	13 gal	13 gal

<sup>1</sup>Includes optional bumper guards. <sup>2</sup>Weights are for Custom models.  
<sup>3</sup>With second seat up. 68.2 cu ft with seat folded down.

## ENGINES AND TRANSAXLES

Type	Displacement	Bore & Stroke	Compression Ratio	Horsepower		Torque	Transaxle Availability
				SAE Net @ RPM			
Federal & Col. 4-cyl OHC	2.2-liter (135 CID)	3.44"x3.62"	8.5:1	84 hp @ 4,800	111 lb-ft @ 2,400		S—Man. (2.69 OTGR)* O—Auto. (2.78 OTGR)*
Federal & Col. 4-cyl OHC	2.6-liter (158 CID)	3.59"x3.86"	8.2:1	92 hp @ 4,500	131 lb-ft @ 2,500		S—Auto. (2.78 OTGR)*

\*OTGR—Overall top gear ratio.

## 5/50 Protection Plans

Chrysler offers you two choices of 5/50 Protection Plans: the 5/50 Power Train Plan and the 5/50 Custom Plan. These optional service contracts provide you with protection against tomorrow's rising service and parts costs for specified major repairs starting after your vehicle's "basic" limited warranty expires and lasting for five years or 50,000 miles (whichever occurs first) from your vehicle's original in-service date. The plans have a \$25 deductible, and provide an allowance for alternate transportation and towing. Ask your dealer for complete details.

## Buy or Lease a Dodge Aries

If you buy a new car every two years or so, or would like to, you're in an ideal situation to take advantage of leasing—for that's the typical length of a lease contract. If you use your car in business, leasing could cut down on your operating and administrative expenses as well as give you accurate records for tax purposes. The more you learn about leasing, the more likely you are to consider it seriously. Talk it over with us—your local member of the Chrysler Leasing System.

## Corrosion Protection

Chrysler Corporation's corrosion protection is among the best in the industry. It includes the extensive use of galvanized steel metal panels, one of the best known methods of corrosion protection, and pre-coated steel in critical areas, as well as the seven-step dip-and-spray process.

All product illustrations and specifications are based on authorized information. Although descriptions are believed correct at publication approval, accuracy cannot be guaranteed. Some of the equipment shown on product illustrations is optional, at extra cost. Chrysler Corporation reserves the right to make changes from time to time, without notice or obligation, in prices, specifications, colors and materials, and to change or discontinue models. See your dealer for the latest information.



MOPAR parts are engineered by Chrysler Corporation for use in your new Dodge Aries. When replacement is necessary, be sure to specify MOPAR parts. Used by professional mechanics all over the world.

A PRODUCT OF  
THE NEW CHRYSLER  
CORPORATION