

PLYMOUTH IMPORTS '80



CHAMP.

THE LITTLE CAR THAT'S BEEN DESIGNED TO STAY OUT FRONT.

■ Design a small car with front-wheel drive, a roomy interior, a unique eight-speed transmission, plus a long list of standard features and you're bound to come up with a Champ . . . a Plymouth Champ. The little car that has everything it takes to be a winner. Styling that sets it apart from other small cars. The traction and stability of front-wheel drive. Plenty of room inside for four. A rear hatch and folding rear seat to turn it into a two-passenger cargo hauler. Plenty of standard comfort and convenience features. And the amazing Twin-Stick transmission.

Want a little car that goes? Move Champ's range selector lever to the "power" setting and then shift gears like a regular four-speed. Champ's energetic 1.4-liter overhead cam four-cylinder engine will do the rest. When you want to ease up on the gas, slip the range selector lever into the "economy" setting and you've got four gear ratios to stretch your mileage. Champ's Twin-Stick . . . four speeds for mph, four speeds for mpg . . . so you can pass big trucks or gas stations with equal ease.

Comfort and convenience come easy for Champ, too. With a long list of standard features like rack-and-pinion steering, power front disc brakes, reclining bucket seats, electric rear window defroster, tinted glass, trip odometer, carpeting and much more.

With Champ Custom (shown on cover) you get extras like an even peppier 1.6-liter engine, cloth-and-vinyl seat trim, tape stripes and steel-belted radial tires. Or pick the Premium Package for a new two-tone paint treatment, four cast aluminum road wheels, cord velour seat trim, electric remote mirrors, rear window wiper/washer and more.

No matter what you like in a little car, one thing's for sure: Champ has the equipment to keep it out front and on top . . . for a long time to come.

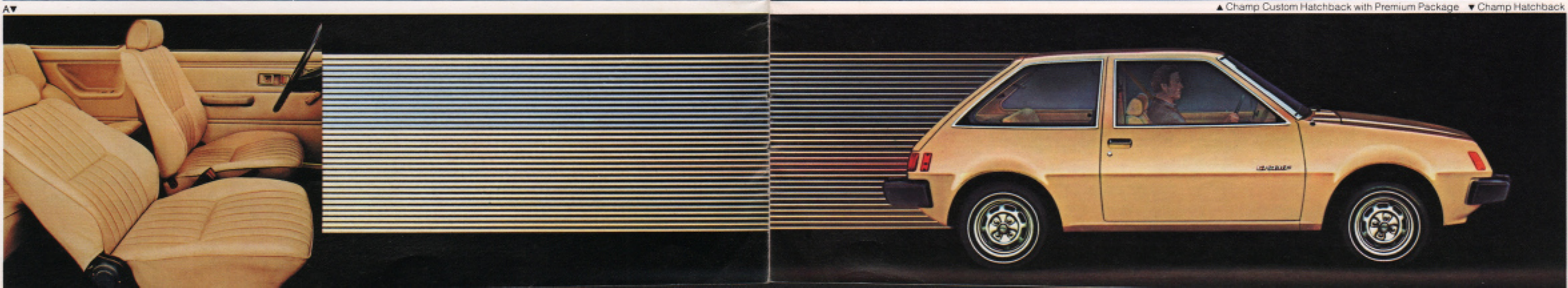
A. Champ's standard pleated all-vinyl interior with dual reclining bucket seats. Offered in blue or cashmere. B. Champ's Premium Package features these plush cord velour and vinyl dual reclining bucket seats in cashmere only. C. A three-speed automatic transmission is now available on all Champ models. D. Champ's popular sun roof option. E. Champ's amazing eight-speed Twin-Stick transmission. It's standard, too!

ABOUT THIS CATALOG.

We have tried to make this catalog as complete as possible. And we hope you find it useful. However, since the time of printing some of the information you'll find here may have been updated. **Also, some of the equipment shown or described throughout this catalog is available at extra cost.** Your dealer has details and you should ask him for current information before ordering.



▲ Champ Custom Hatchback with Premium Package. ▼ Champ Hatchback



ARROW.
OUR SEVENTIES' SIZZLER
OUTDOES ITSELF FOR 1980.

■ Arrow for '80. Refined, redefined. The sporty liftback coupe from Japan. Imported by Plymouth to win the hearts of driving enthusiasts by the thousands. This year there are two Arrows to make you quiver. A new, more fully equipped "anything-but-basic" Arrow. And a more affordable new Fire Arrow.

Our easiest to own Arrow has never been better. With additional standard equipment. Including a smooth-shifting five-speed manual transmission. Steel-belted white sidewall radial-ply tires. Bright wheel-opening trim moldings. Textured vinyl seat inserts. And a day/night mirror.

Everything that makes an Arrow an Arrow is still here. Sleek fastback styling. With a convenient rear hatch that opens to hold 17.3 cubic feet of gear when you fold down the rear seat.

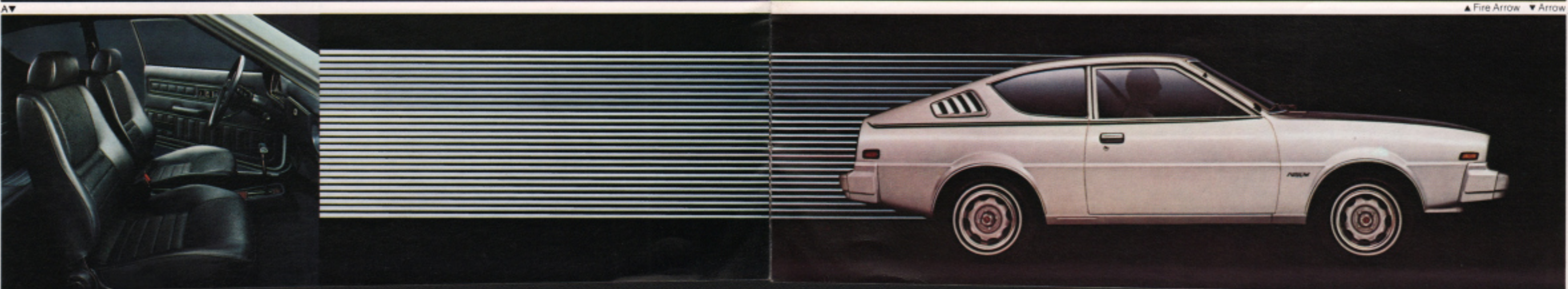
Slip into the reclining front bucket seats. Adjust the steering column to the position you prefer. Grip the three-spoke sport steering wheel. You're ready for action. The kind you'll get with Arrow's 1.6-liter MCA-JET engine. It has an extra jet valve that injects additional air to create an extra-lean mixture of fuel and air in the combustion chamber . . . for faster, more even and complete combustion. We challenge you to find more fun and value for your money than you'll get with our 1980 Arrow.

If you want to get more serious, get more Arrow. With our hot new Fire Arrow. You get Arrow style and Arrow convenience, but with even more "seasoning." Like special side striping, hood graphics and a two-tone paint treatment outside. Plus an ultra-sporty interior featuring bold plaid cloth-and-vinyl trim. Simulated engine-turned aluminum instrument panel applique. A Rallye instrument cluster with tachometer and trip odometer. And a sporty floor console.

Turn the heat up even further. Order your Fire Arrow with the Performance Package and put our 2.6-liter engine and four-wheel disc brakes to the test. Or add the Road Wheel Package and get four cast aluminum road wheels and 185/70SR13 raised white letter radial tires.

Fire Arrow for '80. A lot of Arrow. A lot of Fire. For a lot less money than last year.

A. Arrow's standard pleated all-vinyl interior. Offered in light blue or black. B. Fire Arrow's standard plaid cloth-and-vinyl interior. Offered in blue, cashmere or black and gray plaids. C. Fire Arrow's standard floor console. D. Arrow's optional AM/FM stereo radio with four speakers comes through loud and clear. E. A sporty five-speed is standard on all Arrows. (Automatic transmission optional.)



▲ Fire Arrow ▼ Arrow

SAPPORO.

YOUR OWN CLASS TRANSIT SYSTEM.

■ You're the kind of individual who thinks that getting from point A to point B should be a very personal experience. Smooth, quiet and uncompromisingly comfortable. Yet quick, agile and responsive to your every input. No ordinary car will do. Leave others to more mundane means of transportation and enter the realm of Plymouth Sapporo. It's a world of interior excellence. Outstanding engineering and design features at every turn. All standard. Seats that wrap around you to hold you fast in tight cornering. Front buckets that recline. With semi-concealed headrests, a lumbar support on the driver's side and a walk-in assist and memory feature on the passenger's side. For easy rear seat access. It returns the front passenger seat to a neutral position after rear-seat passengers enter or exit.

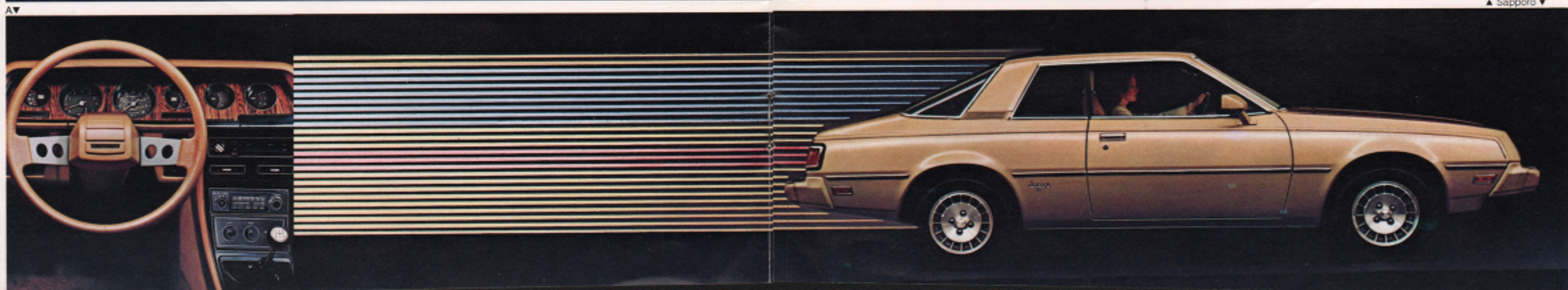
For improved driver comfort, an adjustable steering column is standard. As are dual power remote mirrors, an electric rear window defroster, plus inside hood and rear deck lid releases. Power front disc brakes and steering are also standard. To let you ease on down the highway with a minimum of effort.

Check the overhead console for a digital readout of the time. Monitor the responsive 2.6-liter Silent Shaft MCA-JET engine on the impressive array of gauges before you . . . all clearly visible through the very contemporary sport steering wheel. Set the optional automatic speed control that you'll find on one of the steering column-mounted switches. Operate your intermittent wiper/washer controls, turn signals and high beams with the flick of the other steering column-mounted switch. Turn up the standard AM/FM stereo radio with its four speakers. Watch the minutes and miles fly by. You are piloting one of the truly sleek, handsome forms on the open road today.

Plymouth Sapporo. It's strictly first class all the way.



▲ Sapporo ▼



A. The wheel is sporty, the instrumentation complete. The car is Sapporo. B. A flick of the lever at the seat's right side operates Sapporo's driver's side lumbar support. C. Sapporo's seating. Soft, sensuous . . . upholstered in blue, gray or cashmere cord velour. D. One of Sapporo's two standard power remote control sport mirrors. E. Sapporo's overhead console . . . complete with a digital clock, swivel map light, windshield washer fluid level and door-ajar warning lights and a dome light.

ARROW PICKUP.

IT WORKS HARD AT HAVING FUN.

■ The first time you see our efficiency-size Arrow pickup, you'll probably think it's too cute to cut the mustard . . . too sporty to handle the tough jobs. Like getting its wheels dirty carrying cargo and such.

True, Arrow pickup is a handsome devil . . . with its standard cashmere vinyl bench seat, white sidewall tires, smart exterior colors and dual black racing-type mirrors. But with a roomy, well-built pickup box and a tough suspension, it can haul up to 1,527 pounds of payload*. It'll move out smartly . . . and quietly, too . . . thanks to a 2.0-liter four-cylinder Silent Shaft engine and electronic ignition system. And it'll keep on moving through all four speeds of its slick manual transmission until its power front disc brakes put a stop to things. All under your supervision, of course.

If you'd like a more enthusiastic approach to work and play, move up a notch to the aptly named Arrow Sport pickup. Its method of handling a 1,557-pound payload* is definitely bolder and brasher.

At eye level, it means sporty tape striping; a low-luster black painted front bumper; raised white letter steel-belted radial tires and wide spoke road wheels outside. With striped high-back vinyl bucket seats, sports-styled three-spoke steering wheel, loop-pile carpeting, floor console, AM/FM stereo radio, tachometer, oil pressure gauge and ammeter inside.

At gut level, it means a bigger 2.6-liter Silent Shaft four-cylinder engine and a sporty five-speed manual overdrive transmission that'll help ease the load, whether you're hauling potatoes or dirt bikes.

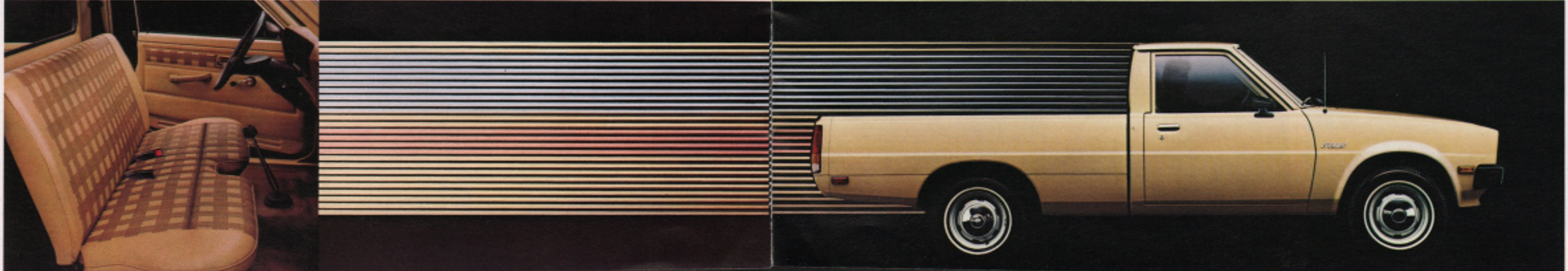
Add to the fun of owning an Arrow pickup by picking out a few options like a Sky Lite sun roof, cargo box roll bar or an automatic transmission. And carry it off in style. In the hardworking pickup sporty enough to be called "Arrow."

*Includes weight of driver, passenger and optional equipment.

A. Arrow pickup's standard two-passenger vinyl bench seat is offered only in cashmere. B. Arrow Sport pickup's standard high-back vinyl bucket seats are offered in cashmere and dark cashmere or black and gray color combinations depending on exterior body color. C. An adjustable steering column, two-spoke steering wheel, AM radio, two-speed wipers and washers, cigarette lighter and glove box are all standard on Arrow pickup. D. Arrow pickup's standard tubular cargo tie-down bars are provided on the inside of the box to help prevent shifting cargoes. E. This optional sliding rear window adds convenience and extra ventilation to any Arrow pickup.



▲ Arrow Sport pickup ▼ Arrow pickup



STANDARD FEATURES & OPTIONS

Certain models, packages and options are subject to specific restrictions, requirements and late availability. Consult your dealer for current ordering information.

□ CHAMP HATCHBACK

- 1.4-liter four-cylinder engine • 4 x 2 Twin-Stick manual transmission • All-vinyl reclining front bucket seats • Bright bumpers, grille and window moldings • Carpeting • Front and rear bumper guards • Electric wipers with pulse wipe feature • Flipper-type rear quarter windows • Fuel lid lock • Armrests • Rear window defroster • Inside hood release • Left side mirror • Power front disc brakes • 6.15 x 13 white sidewall tires • Styled steel road wheels • Tinted glass • Trip odometer

□ CHAMP CUSTOM HATCHBACK

- Includes all of the above. Plus • 1.6-liter engine • Assist grips • Cargo carpet • Cloth-and-vinyl seat and door trim • Custom tape stripes • Remote liftgate release • Floor console • 155SR-13 white sidewall steel-belted radial tires • Rear security shelf • Sport steering wheel

□ CHAMP CUSTOM HATCHBACK WITH PREMIUM PACKAGE

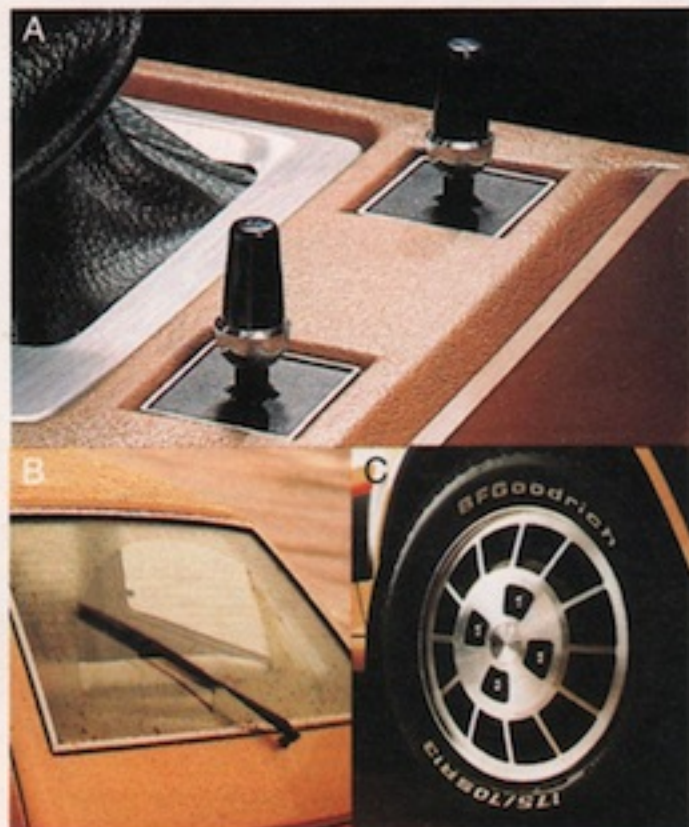
- Includes all Custom equipment. Plus: • Bright gold/light tan two-tone paint treatment • Four cast aluminum wheels • 175/70SR13 raised white letter steel-belted radials • Cord velour cloth-and-vinyl seat trim • Tachometer • Day/night mirror • Dual electric remote mirrors • Rear wiper/washer • Rear cargo lamp • Floor console with oil and amp gauges

CHAMP HATCHBACK'S COMPLETE LIST OF OPTIONS

Shown below: **A.** Dual electric remote control outside mirrors. **B.** Rear wiper/washer. **C.** Four cast aluminum wheels with 175/70SR13 raised white letter radial tires.

- Accent tape stripes* □ Air conditioning □ AM radio □ AM/FM stereo radio □ Automatic transmission □ Carpet protectors □ Dual horns □ Emissions Control System and Testing (required in California) □ Luggage rack □ Sun roof □ Wheel trim rings □ Vinyl body-side moldings □ 155SR13 white sidewall steel-belted radial tires* □ 5/50 Protection Plan

*Available on base Champ only.



□ SAPPORO

- 2.6-liter engine • 195/70SR14 steel-belted radial tires • Color-keyed road wheels with bright trim rings • Bright windshield, belt, roof, drip and rear window moldings • Dual power remote mirrors • Front and rear bumper guards • Dual reclining cord velour front bucket seats • Sport steering wheel • Five-speed manual transmission • Tachometer • Temperature, oil, fuel and ammeter gauges • Trip odometer • Adjustable steering column • Inside hood release • Electric rear window defroster • Inside deck lid release • Overhead console with reading lamp, dome light and digital clock • Color-keyed cut-pile carpeting • Chime warning system • Tinted glass all around • Multifunction switch for wiper/washer controls, turn signals and headlamp dimmer • Locking fuel filler door • Side accent stripe • Color-keyed bumpers • AM/FM stereo radio with four speakers • Power steering • Power front disc brakes • Bright and black vinyl body-side molding

□ ROAD WHEEL PACKAGE

- Four cast aluminum wheels • Four-wheel disc brakes and steel spare wheel

SAPPORO'S COMPLETE LIST OF OPTIONS

Shown below: **A.** Cast aluminum road wheel (part of Road Wheel Package). **B.** Automatic transmission. **C.** Air conditioning.

- Air conditioning □ Automatic speed control □ Carpet protectors □ Emission Control System and Testing (required in California) □ 5/50 Protection Plan



□ ARROW

- 1.6-liter four-cylinder engine • Five-speed manual transmission • Adjustable steering column • Argent-painted bumpers • Front and rear bumper guards • Carpeting • Cigarette lighter • Black-painted racing mirror • Folding rear seat • Locking fuel filler door • Day/night rear-view mirror • Power front disc brakes • Reclining front bucket seats • Sport steering wheel • Five styled road wheels • Tinted glass—all windows • Wheel-opening and drip rail moldings • 165SR13 white sidewall steel-belted radial tires

□ FIRE ARROW

- All of the above except argent bumpers, black racing mirrors and wheel-opening moldings. Plus • Two-tone paint and body stripes • Hood decal • Dual racing mirrors • Flipper rear quarter windows • Floor console • Bright bumpers (except black and white model) • Rallye cluster with tachometer • Rear window defroster • Trip odometer • Engine-turned instrument panel and console applique • Cloth-and-vinyl reclining front bucket seats

□ ALUMINUM ROAD WHEEL PACKAGE

- (Fire Arrow only) • Four cast aluminum wheels • 185/70SR13 raised white letter radial tires • Temporary spare 6.00 x 13 black sidewall tire on steel argent wheel

□ PERFORMANCE PACKAGE

- (Fire Arrow only) • 2.6-liter engine • Four-wheel disc brakes • 2.6-liter decal

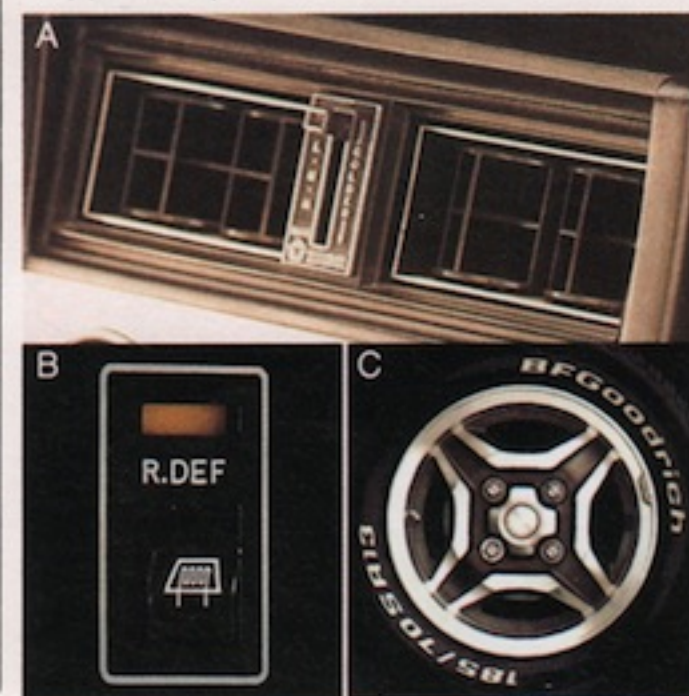
ARROW'S COMPLETE LIST OF OPTIONS

Shown below: **A.** Air conditioning. **B.** Electric rear window defogger.⁽¹⁾ **C.** Four cast aluminum road wheels with 185/70SR13 raised white letter radial tires (part of Aluminum Road Wheel Package).

- Accent tape stripes⁽²⁾ □ AM radio □ AM/FM stereo radio □ Automatic transmission □ Carpet protectors □ Dual horns □ Emission Control System and Testing (required in California) □ Sun roof □ Vinyl body-side moldings □ Wheel trim rings □ 5/50 Protection Plan

⁽¹⁾Standard on Fire Arrow. Required in N.Y. state.

⁽²⁾Arrow only.



□ ARROW PICKUP

- 2.0-liter Silent Shaft four-cylinder engine • Four-speed manual transmission • Power front disc brakes • 6.00 x 14-C white sidewall bias-ply tires • Adjustable steering column • Vinyl folding two-passenger bench seat • Vinyl color-keyed door trim panels • Dual color-keyed sun visors • Color-keyed headliner • Padded instrument panel • Black racing-type left and right side mirrors • Argent-painted front bumper with black rubber ends • Two-speed wipers with washers • Bright hubcaps • Tubular cargo tie-down bars in pickup box • Electronic ignition system • Two-spoke steering wheel • Tinted glass • Passenger assist grip • AM radio • Cigarette lighter • Cargo lamp • Armrests • Bright windshield and drip rail moldings • Extra sound insulation

□ ARROW SPORT PICKUP

This sporty version of our Arrow pickup has so many standard features there's not enough room to list them all here. See page 8 of this catalog for full details.

ARROW PICKUP'S COMPLETE LIST OF OPTIONS

Shown below: **A.** Sky Lite sun roof. **B.** Automatic transmission. **C.** Cargo box roll bar.

- Air conditioning □ Body-side and tailgate tape stripes (Arrow pickup only) □ 5/50 Protection Plan □ Front grille guard □ Low-mount black left and right mirrors □ Mud guards □ Power steering □ Sliding rear window □ Low-luster black step-type rear bumper □ Vinyl body-side moldings □ Wheel trim rings (Arrow pickup only)



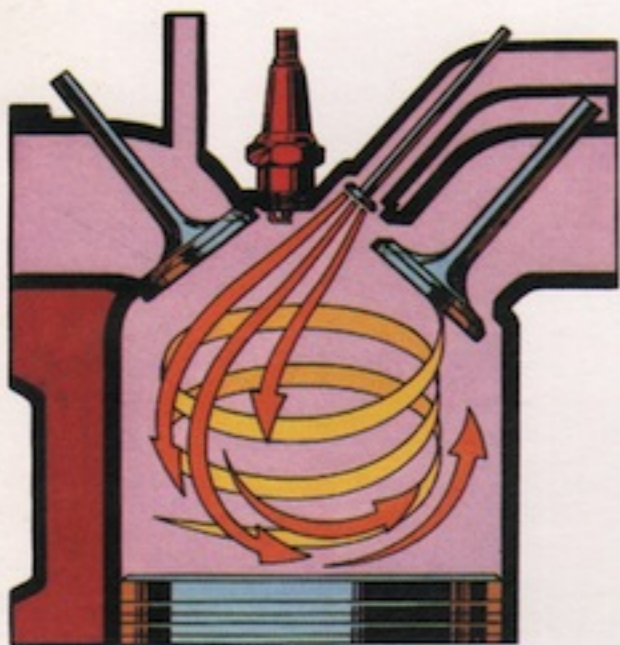
NOTE: Ask your dealer for details regarding restrictions applicable to the later installation of air conditioning.

THE MITSUBISHI ENGINEERING STORY

■ Plymouth Champ hatchback, Arrow, Sapporo and Arrow pickup are made in Japan by Mitsubishi Motors Corporation whose reputation for superior quality and design is worldwide. It's apparent in every one of these fine products. As a group they are among the most technologically advanced Japanese imports you can buy. They are also some of the finest cars and trucks of their type produced anywhere in the world. The following are just a few of the many ingenious design features available on many of these vehicles.

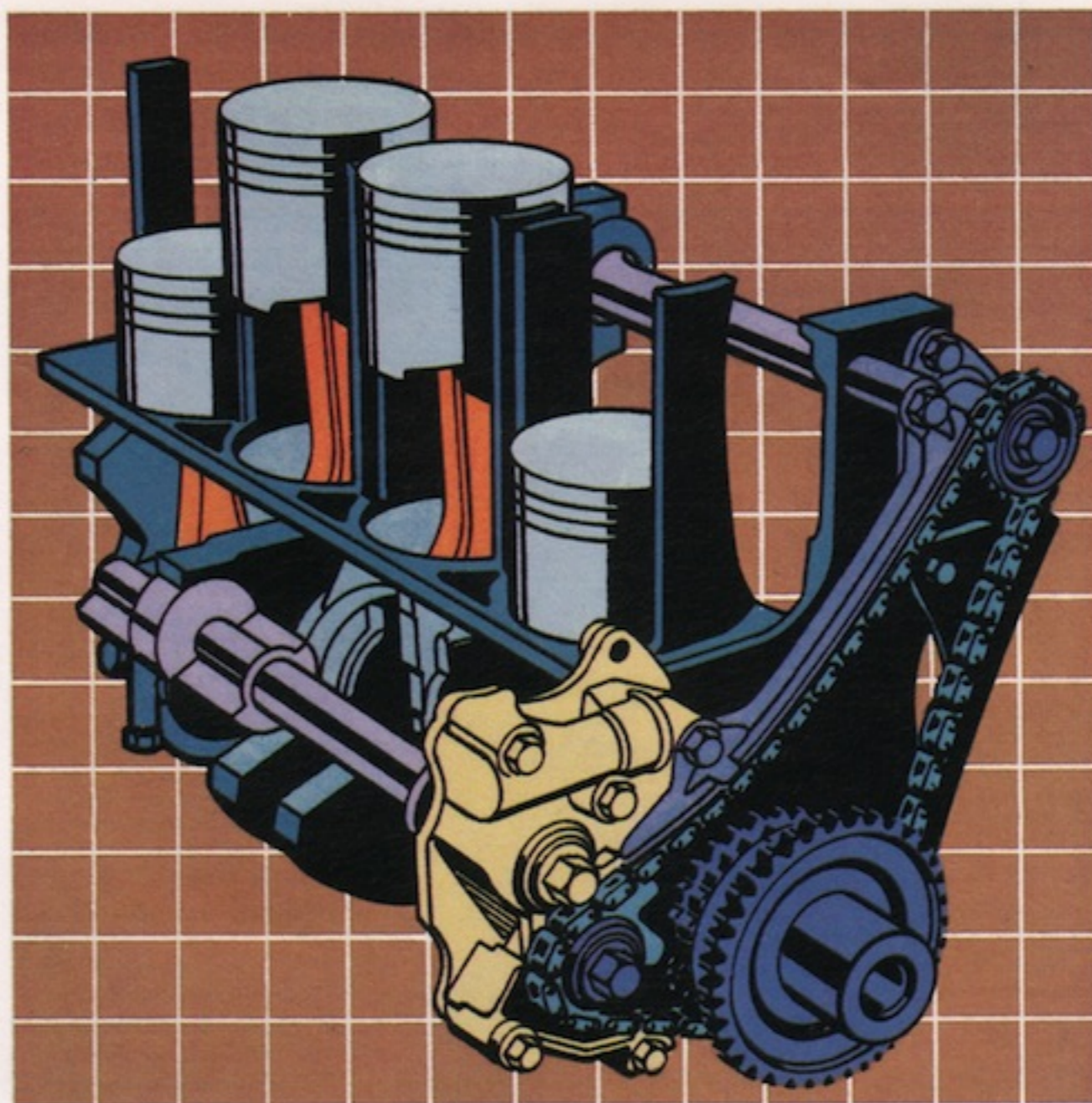
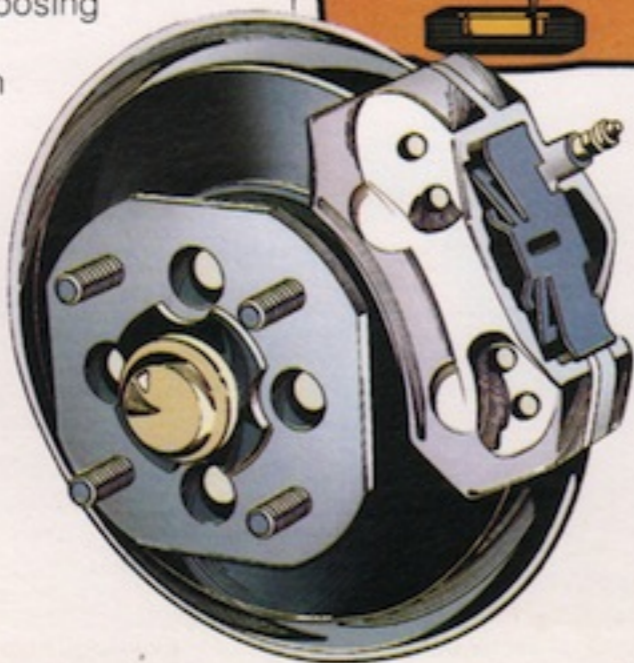
MCA (MITSUBISHI CLEAN AIR) JET ENGINE SYSTEM

To every cylinder chamber, Mitsubishi engineers have added an extra jet valve. This valve injects an additional amount of air to create an extra-lean, swirling mixture of fuel and air in the combustion chamber. This makes for faster, more even and complete combustion, which means better efficiency and performance for the driver . . . and cleaner air for everyone. The MCA-JET Engine System is standard on every Champ hatchback, Arrow, Sapporo and Arrow pickup sold in America.



POWER DISC BRAKES

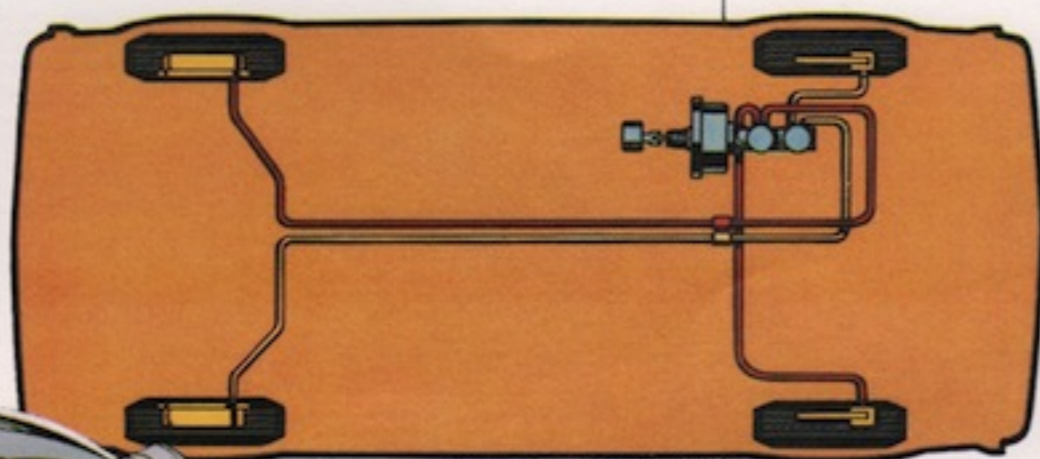
Sure-stopping, fade-resistant caliper-type power disc brakes are standard up front on Champ hatchback, Arrow, Sapporo, Arrow pickup and Arrow Sport with drum brakes in the rear. In addition, Champ hatchback features a dual diagonal braking system with two separate systems for opposing front and rear wheels to help provide Champ with straight-line stopping power. Sapporo and Arrow, on the other hand, offer four-wheel disc brakes with the optional Road Wheel and Performance Packages. For the ultimate in sports car braking systems.



THE SILENT SHAFT ENGINE

Excess noise and vibration usually associated with four-cylinder engines have been virtually eliminated by Mitsubishi engineers who developed this unique Silent Shaft design. The secret of their success is the use of counterbalancing shafts that rotate in opposite

directions to cancel out the vibration and hence the noise inherent in conventional four-cylinder engines. This design feature is incorporated in the 1.6-liter with automatic transmission on Arrow and all 2.0- and 2.6-liter engines.



THE TWIN-STICK TRANSMISSION

Just when everyone else was "discovering" four- and five-speed transmissions, Mitsubishi engineers came up with the world's first eight-speed for cars. That's the amazing Twin-Stick that you'll find standard on the Champ hatchback. The lever on the right is like a normal four-speed. The range selector lever on the left converts that four-speed into an eight-speed by giving you two operating ranges . . . one for economy and one for power. So, depending on the mode you select, you get either outstanding efficiency or surprisingly brisk performance. It's a Mitsubishi and Chrysler Corporation exclusive.



5/50 Protection Plan. This optional service contract, the longest protection plan* of any domestic manufacturer, covers major power train components for five years or 50,000 miles (whichever comes first) from the time you take delivery of your new vehicle. The plan, which has a \$50 deductible per repair visit, also has an allowance for alternate transportation and towing. Ask your dealer for full details.

*Provisions of plans may vary with manufacturer.

1980 PLYMOUTH IMPORT SPECIFICATIONS

ENGINE

Champ Hatchback	1.4-liter four-cylinder MCA-JET (1.6-liter with auto. trans)
Champ Custom Hatchback	1.6-liter four-cylinder MCA-JET
Champ Custom Hatchback with Premium Package	1.6-liter four-cylinder MCA-JET
Arrow, Fire Arrow	1.6-liter four-cylinder MCA-JET
Sapporo	2.6-liter four-cylinder MCA-JET with Silent Shaft
Arrow Pickup	2.0-liter four-cylinder MCA-JET with Silent Shaft
Arrow Sport Pickup	2.6-liter four-cylinder MCA-JET with Silent Shaft

TRANSMISSION

Champ Hatchback	Twin-Stick manual standard; automatic optional Four-speed manual (1)
Arrow	Five-speed manual standard; automatic optional
Sapporo	Five-speed manual standard; automatic optional
Arrow Pickup	Four-speed manual standard; automatic optional
Arrow Sport Pickup	Five-speed manual overdrive standard; auto. opt.

(1) Credit option base Champ only.

EXTERIOR DIMENSIONS & FUEL CAPACITY

	Champ Hatchback	Arrow	Sapporo	Arrow Pickup	Arrow Sport Pickup
Wheelbase	90.6"	92.1"	99.0"	109.4"	109.4"
Overall length	156.9"	169.9"	183.1"	184.6"	184.6"
Overall width	62.4"	63.4"	66.9"	65.0"	65.0"
Overall height	50.6"	50.4"	51.8"	60.6"	59.8"
Track: front	53.9"	51.2"	53.9"	53.5"	54.5"
rear	52.8"	52.8"	53.3"	52.8"	53.7"
Turning diameter (curb to curb)	32.8'	32.8'	33.4'	36.7'	36.7'
Curb weight (est.)	1,800 lbs	2,202 lbs	2,725 lbs	2,518 lbs	2,563 lbs
Box length(1)	—	—	—	81.5"	81.5"
Box width(1)	—	—	—	64.2"	64.2"
Maximum payload(2)	—	—	—	1,527 lbs	1,557 lbs
GVW rating	—	—	—	4,045 lbs	4,120 lbs
Fuel capacity (gal)	10.5	13.2	15.3	15.1	15.1

(1) Inside at floor. (2) Maximum payload includes weight of driver, passenger and optional equipment.

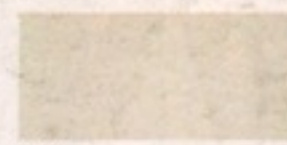
INTERIOR DIMENSIONS

	Champ Hatchback	Arrow	Sapporo	Arrow Pickup and Arrow Sport Pickup
Headroom—front	36.8"	36.8"	36.8"	38.2"
—rear	36.0"	34.4"	35.0"	—
Legroom—front	40.6"	41.7"	41.7"	41.1"
—rear	29.7"	28.0"	31.3"	—
Shoulder room—front	51.0"	50.4"	51.2"	52.8"
—rear	52.4"	50.4"	51.0"	—
Hiproom—front	51.6"	50.8"	52.8"	53.5"
—rear	43.3"	40.2"	52.4"	—
Storage rear seatback up	6.5 cu ft	—	10.9 cu ft	—
rear seatback down	27.4 cu ft(1)	17.3 cu ft	—	—
behind seat	—	—	—	4.6 cu ft

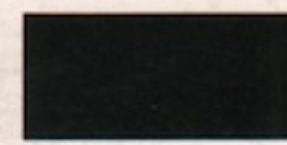
(1) Includes hidden storage of 2 cubic feet.

COLORS

CHAMP HATCHBACK



White



Black

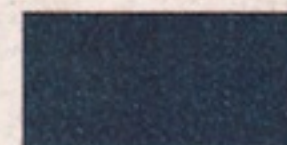


Light Tan

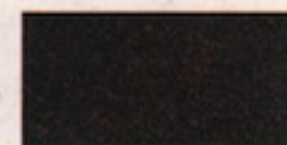
CHAMP CUSTOM



Silver



Bright Blue



Ballast Sand

CHAMP CUSTOM WITH PREMIUM PACKAGE



Bright Gold / Light Tan

ARROW



Light Blue



Silver

FIRE ARROW



Dark Blue / Light Blue



Ballast Sand / Bright Gold



Dull Black / White

SAPPORO



Dark Blue

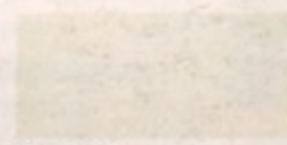


Bright Gold



Silver

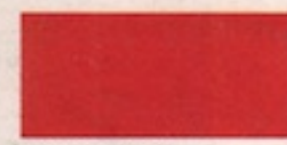
ARROW PICKUP



Warm White

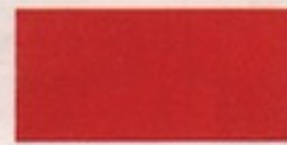


Light Tan



Spitfire Orange

ARROW SPORT PICKUP

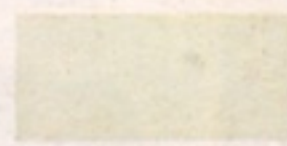


Spitfire Orange (inc. stripes)



Yellow (inc. stripes)

ARROW SPORT PICKUP



Warm White (inc. stripes)

STANDARD SAFETY FEATURES

• Unibelt restraint system • Hazard warning flasher • Turn signals with lane-change feature • Side marker lights and reflectors • Backup lights • Disc brakes • Dual braking system with warning lights • Dual throttle return springs • Circuit breaker for headlamps • Electric windshield wipers and washers • Energy-absorbing steering column* • High penetration-resistant windshield • Padded instrument panel, sun visors and top* on front seatback • Side-door guard beams* • Folding seatback latches • Interlocking door latches • Dual hood latch system • Front-seat head restraints* • Lock button override inside door release lever • Fire-retardant interior trim materials • Left outside rearview mirror (dual mirrors on some models) • Safety-Rim wheels

*Not applicable, Arrow pickups.

Chrysler Corporation reserves the right to make changes at any time without notice or obligation, in prices, colors, materials, equipment or specifications and to change or discontinue models. Check your dealer for complete current information.

Buy or lease a Plymouth Champ, Arrow, Sapporo or Arrow pickup.



MOPAR parts are engineered by Chrysler Corporation for use in your new Plymouth. When replacement is necessary, be sure to specify MOPAR parts. Used by professional mechanics all over the world.