

PLYMOUTH HORIZON '80



ENGINES & TRANSMISSIONS

- 1.7-liter (104.7 CID) four-cylinder (standard)
- 1.7-liter (104.7 CID) four-cylinder with California-required Emissions System (optional)
- Four-speed manual—Fully synchronized (standard)
- TorqueFlite automatic (optional)

TIRES & WHEELS

- P155/80R13—Glass-belted radial WSW (standard on four-door)
- P165/75R13—Glass-belted radial WSW (optional on four-door)
- P175/75R13—Glass-belted radial BSW (standard on TC3)
- P175/75R13—Glass-belted radial WSW (optional on TC3)
- P175/75R13—Steel-belted radial WSW (optional)
- P185/70R13—Aramid-belted radial BSW (optional on TC3)
- P185/70R13—Aramid-belted radial OWL (optional on TC3)
- Road Wheels—Argent (std) (four)

- Rallye Wheel—Body-colored: includes bright hubs, lug nuts, and trim rings; offered in five colors and argent (optional) (four)
- Road Wheels—Cast aluminum (optional) (four)

NOTE: WSW—white sidewall, OWL—outline white letter, BSW—black sidewall.

OPTIONAL PACKAGES

Popular Equipment Group

- Dual horns • Power steering • Left outside remote mirror (four-door) • Dual aerodynamic outside remote mirrors (TC3) • Day/night inside mirror • Deluxe seat belts: color keyed—with tension-reliever and automatic release • Wheel-trim rings (four-door; std. TC3)

Sport Two-Tone Paint Package (TC3)

- Dark contrasting lower accent paint: White/Graphic Red; Frost Blue Metallic/Nightwatch Blue; Natural Suede Tan/Mocha Brown Metallic
- Two-tone accent tape stripe
 - Bright and black front and rear bumper protective rub strips

Classic Two-Tone Paint (Four-Door)

- Full-length body-side and liftgate moldings with black paint fill—contrasting lower accent paint • Accent color tape stripes on hood, body side and rear:

Burnished Silver Metallic/Black; Nightwatch Blue/Frost Blue Metallic; Light Cashmere/Natural Suede Tan; Baron Red/Natural Suede Tan

Sport Appearance Package (TC3)

- Black paint graphics on lower part of body • Black windshield moldings • Black belt moldings • Black taillamp accents • Black accent on door handles • Black backlight molding • Name decals on quarter panels, TC3 • Black dual aerodynamic mirrors • Rear spoiler with TC3 decal • Rallye instrument cluster with tachometer • Sport four-spoke steering wheel • Body-side black tape stripe with reflective red accents at taillamp area • Black protective rub strips—front and rear • Color-keyed Rallye wheels with bright hub and lugnuts • P175/75R13 steel-belted radial white sidewall tires

Available in:

Graphic Blue/Flat Black; Burnished Silver Metallic/Flat Black; Bright Yellow/Flat Black; Graphic Red/Flat Black.

With argent, argent, yellow and red road wheels, respectively.

Custom Interior Package (Four-Door)

- Woodgrain applique on instrument panel • Glove box lock • Custom door trim panels with rear armrests • Custom vinyl seats—blue, red, cashmere or black, or optional Custom cloth-and-vinyl seats—blue, red or cashmere • Knit cloth headliner • Cigarette lighter

Premium Interior Package

- Color-keyed console with rear ash receiver and woodgrain • Cigarette lighter • Visor vanity mirror • Glove box lock (four-door; standard TC3) • Wood-grain applique on instrument panel (four-door; standard TC3) • Sport four-spoke steering wheel (TC3) • Luxury three-spoke steering wheel (four-door) • Premium door trim panels with carpet and long front armrests w/integral pull handle • Rear armrests (four-door) • Knit cloth headliner (four-door; standard TC3) • All-vinyl seats—blue, red, cashmere or black (TC3), or optional cloth-and-vinyl seats—blue, red, cashmere or black • Cargo compartment dress-up and insulation • Color-keyed seat belts

Custom Exterior Package (Four-Door)

- Drip moldings • Wheel-opening moldings • Sill moldings • Door upper frame moldings

Premium Exterior Package (TC3)

- Body-side and rear tape stripes • Black and bright bumper protective rub strips • Deluxe wheel covers • P175/75R13 steel-belted radial white sidewall tires

Premium Exterior Package (Four-Door)

- Drip moldings • Wheel-opening moldings • Sill moldings • Door upper frame moldings • Center pillar moldings • Belt moldings • Full-length paint-filled body-side and liftgate moldings • Deluxe wheel covers

Premium Woodgrain Package (Four-Door)

- Full-length paint-filled body-side and liftgate moldings • Woodtone body-side and liftgate applique • Drip moldings • Sill moldings • Door upper frame moldings • Center pillar moldings • Belt moldings • Deluxe wheel covers

Turismo Package (TC3)

- Popular Equipment Group • Premium Interior Package • Power disc brakes—front • Rallye instrument cluster • Sport steering wheel • Halogen headlamps • Deluxe color-keyed seat belts • Cast aluminum road wheels • Conventional spare tire • Rear deck spoiler • P185/70R13 Aramid-belted black sidewall radial tires • 3.5:1 performance axle • AM/FM stereo radio • Black windshield moldings • Black hatchback window moldings • Black door handle inserts • Black belt molding • Black protective bumper rub strips, front and rear • Turismo decal nameplates on body sides and rear deck spoiler

Available in Burnished Silver Metallic, Nightwatch Blue, Baron Red, Graphic Red, Mocha Brown Metallic, Spinnaker White and Formal Black

OPTIONS

- Air Conditioning
- Battery—430-amp Maintenance-Free (heavy-duty)
- Bumper Guards—Front and rear (four-door)
- Bumper Protective Rub Strips—Front and rear (TC3)
- Cargo Compartment Dress-Up
- Cigarette Lighter
- Coating, Protective—Lower body
- Color-Keyed Seat Belts—Deluxe with tension reliever and automatic release

Consoles

- Front Storage
- Shift Lever Console—Includes auxiliary storage and rear ashtray
- Cover, Tonneau—Rear (TC3)
- Emissions Control & Testing—Required on all vehicles registered in California

- Gas Cap—Locking
- Glass, Clear—All windows
- Hatchback Release—Remote, electric on TC3
- Headlamps—Halogen
- Horns—Dual
- Instrument Cluster, Rallye—With tachometer
- Lock—Glove box
- Luggage Rack—Roof
- Mats—All carpet

Mirrors

- Day/Nite—Inside
- Remote Control—Chrome, left: four-door only
- Remote Control—Left and right convex: four-door
- Remote Control—Outside left and convex right dual aerodynamic, color-keyed (TC3)

Moldings & Stripes

- Belt—Bright, four-door (standard, TC3)
- Body-Side and Rear—Tape stripes (TC3)
- Body-Side, Hood and Rear—Tape stripes: four-door
- Center Pillar and Door Upper Frame Moldings—Four-door
- Door Edge Protectors
- Drip Rail—Four-door
- Side—Tape stripe, multicolor, four-door
- Sill Moldings—Four-door
- Wheel Opening Moldings—Four-door

Power Assists

- Power Disc Brakes—Front
- Power Steering

Radios

- AM/FM—Four-door (standard TC3)
- AM/FM Stereo—Includes speakers in left and right front door on four-door, plus two rear speakers on TC3
- Rear-Seat Speaker—Single (TC3)
- Rear Wiper/Washer—Four-door
- Speed Control
- Spoiler—Rear aerodynamic (TC3)
- Steering Wheel—Luxury three-spoke (four-door; standard TC3)
- Steering Wheel—Sport four-spoke
- Sun Roof—Flip-up glass, removable
- Suspension—Heavy-duty (four-door)
- Suspension—Sport (TC3)
- Undercoating
- Wheel Covers—Deluxe
- Wheel Trim Rings—Standard, TC3; opt., four-door
- Windshield Wiper—Deluxe with intermittent wipe feature

STANDARD SPECIFICATIONS

ENGINE:	1.7-liter—two-barrel four-cylinder
TRANSMISSION:	Four-speed manual
AXLE RATIO:	3.4:1
SUSPENSION:	Front—MacPherson-type, independent with separate sway bar Rear—Trailing arm, independent with integral antisway feature
TIRES:	P175/75R13 BSW—Glass-belted radial (TC3) P155/80R13 WSW—Glass-belted radial (four-door)
BRAKES:	Front—self-adjusting manual disc; rear—drum
ELECTRICAL:	Battery—310-ampere; alternator—65-ampere

DIMENSIONS, WEIGHT AND CAPACITY

	TC3 Hatchback	4-Door Hatchback
LENGTH: (includes optional bumper guards)	172.8"	164.8"
WIDTH:	66.7"	65.8"
HEIGHT:	51.1"	53.4"
WHEELBASE:	96.7"	99.2"
TURNING DIAMETER:	33.3'	34.0'
CURB WEIGHT:	2,197 lbs	2,154 lbs
TREAD (FRONT/REAR):	56.1"/55.6"	56.1"/55.6"
CARGO CAPACITY		
—with rear seatback raised	10.7 cu ft	10.5 cu ft
—with rear seatback folded	33.9 cu ft	35.8 cu ft
—hidden cargo volume	1.6 cu ft	3.6 cu ft
PASSENGER CAPACITY:	4	4
FUEL CAPACITY:	13 gallons	13 gallons

STANDARD EQUIPMENT

Ash Receiver—Front instrument panel
Bumper Protective Rub Strips—Front and rear (four-door)
Cleaner Air System
Clock—Electric
Coat Hooks
Defroster—Rear window: electric
Diagnostic Plug-In Connector
Electronic Ignition and Spark Control and Solid-State Voltage Regulator
Floor Covering—Cargo compartment and seatback, color-keyed (TC3)
Floor Covering—Passenger compartment, color-keyed
Glass—Tinted glass, all windows
Heater and Defroster
Hood Insulation Pad
Hood Release—Inside
Horn—Single
Instrumentation—Alternator gauge, engine temperature and oil pressure warning light, fuel gauge
Instrument Panel Safety Padding—Woodtone accents on TC3

Lights—Headlight switch, backup, dome light switch, driver's door and right front door, parking brake warning, side marker lights and reflectors; select lever quadrant (with automatic transmission), map/courtesy light; glove box lock, ash receiver light, luggage compartment, ignition light with time delay, headlights-on buzzer
Lock—Glove box (TC3)
Mat—Trunk (four-door)
Mirrors—Outside aerodynamic left sport mirror (TC3)
—Outside, left, manual, chrome (four-door)
Multifunction Steering Column Switch—Headlights, wipers, turn signals
Quarter Window Louvers—TC3
Rack and Pinion Steering
Radial Tires
Radio—AM (four-door)
Radio—AM/FM (TC3)
Seats—Front buckets, folding rear bench

STANDARD SAFETY FEATURES

• Backup lights • Brake system warning light (also serves as indicator when parking brake is applied) • Combination lap-shoulder belts for the driver and right-front passenger, and lap belts for all other passengers • Double ball joint rearview mirror mount • Dual diagonal braking system with separate brake fluid reservoirs in the master cylinder • Dual throttle return springs • Electric windshield washers and wipers • Energy-absorbing bumper systems • Energy-absorbing front seat-backs • Energy-absorbing steering wheel • Fade-resistant front disc brakes • Front-seat head restraints • Glare-reduction measures for windshield wipers, instrument panel and steering wheel • Hazard warning flasher system • Headlamp and wiper circuit breakers with automatic reset • Ignition and steering column lock • Inside and outside rearview mirrors • Interlocking door latches • "Key-left-in-ignition" buzzer • Non-override door locks (except driver's door) • Padded instrument panel and sun visors • Recessed inside door release handles • Reinforced windshield header and roof • Resilient window crank knobs • Rotary glove-box latch • Safety-Rim wheels • Seatback latches on folding seats (inertia latches on low-back bucket seats) • Seat belt reminder system • Side door beams • Side marker lights and reflectors • Turn signals with lane-change feature

COLORS



Two-Tone Colors Four-Door



TC3



TC3 Sport Package



Chrysler Corporation reserves the right to make changes at any time without notice or obligation, in prices, colors, materials, equipment or specifications and to change or discontinue models. Check your dealer for complete current information.

Chrysler Engineers Quality, Performance and Value into a Sub-Compact Car.

Buy or lease a Plymouth Horizon



MOPAR parts are engineered by Chrysler Corporation for use in your new Plymouth. When replacement is necessary, be sure to specify MOPAR parts. Used by professional mechanics all over the world.

HORIZON TC3.
BEYOND
THE
ORDINARY.
MADE
TO BE
DRIVEN
FOR ALL
IT'S WORTH.
WHERE
WILL YOU
TAKE IT?

ABOUT THIS CATALOG.

We have tried to make this catalog as complete as possible. And we hope you find it useful. However, since the time of printing, some of the information you'll find here may have been updated. Also, some of the equipment shown or described throughout this catalog is available at extra cost. Your dealer has details and you should ask him for current information before ordering.



Horizon TC3 with Sport Appearance Package
Shown in Graphic Red/Flat Black

HORIZON TC3

Take it to the limit.

Sleek and slippery. A design right on target with today's pace. Wind tunnel tests have proved TC3 to be one of the most efficient aerodynamic designs of any car built in America. A smooth look gliding its way to good fuel economy.

With performance just as smooth. Front-wheel drive, a first for American sports coupes, provides road-gripping traction in the best and worst of road conditions. And it's linked with rack-and-pinion steering and an independent front suspension. With a tight turning radius for nimble maneuvering.

But you have to sit inside TC3 and drive it to really appreciate the sports-car-like feel. Grip the three-spoke luxury steering wheel. Take a look through the expansive glass area. Check out the gauges on the instrument cluster. Standard—an AM/FM radio, electric rear window defroster, tinted glass, engine temperature/oil pressure warning light and cut-pile carpeting. Now, turn on the responsive 1.7-liter engine. It's ready—when you are.

Ready for short trips or long hauls. With the rear seat lowered, TC3 provides 33.9 cubic feet of luggage capacity. The optional electric hatchback release makes access easy. And the front seats, spacious and comfortable just the way you like them. For added enjoyment, you can order options like air conditioning, a rear aerodynamic spoiler, a Tri-Lite sun roof and an automatic transmission.

To vary the TC3 look, order the Turismo Package and get cast aluminum road wheels, a rear deck spoiler and blackout moldings. For a more complete list of Turismo contents, see page 11.

TC3. Soaring you to new Horizons ... and beyond.

Horizon TC3 with Turismo Package. Low-back all-vinyl Premium bucket seats are standard on TC3 with Turismo Package.



HORIZON FOUR-DOOR

Handling it with
confidence.

Horizon four-door. A lot of people have been noticing it. People who demand an economical yet roomy car, and one that will perform. And they've found it. Horizon four-door. It has a lot going for it.

Like its head start on the front-wheel-drive market. Horizon four-door was the first American-built subcompact to offer it. And the first to combine it with rack-and-pinion steering, a tuned suspension and standard radial tires. Plus it's teamed with a responsive 1.7-liter engine and four-speed manual transmission. Just the right combination of features to inspire driving confidence.

But don't be fooled by its small-car look. Inside, Horizon four-door can handle four people in comfort. On dual front bucket seats and on the rear bench seat. Fold down the rear seat and you enlarge the luggage area from 10.5 to 35.8 cubic feet. Or from roomy to incredibly roomy! Luggage space that can be protected with the standard security panel. It moves up for easy loading and folds down for added protection.

All this within an easygoing atmosphere of convenient standard equipment. AM radio, three-spoke steering wheel, tinted glass, rear electric defroster, electric clock and a trip odometer.

The affordable Horizon four-door. It meets your needs while staying within your means.

Horizon four-door with Custom Exterior Package.

Cloth-and-vinyl seat available with optional Custom Interior Package.

NOTE: Since 1980 EPA estimates were unavailable at the time this catalog was printed, ask your dealer about current information regarding miles-per-gallon ratings.





New Horizons

Horizon's good looks can be dressed up with one of these optional exterior or interior packages.

Premium Exterior Package

This Premium Package (as pictured left) adds such touches as deluxe wheel covers (optional Rallye wheels shown), drip trough, wheel opening, sill and upper door frame moldings. Plus center pillar belt and body-side and liftgate moldings. In addition to the Premium Package, this Horizon features the optional Classic Two-Tone Paint Package for a more distinct look.

Custom Interior Package

has such tasteful features as woodgrain applique on instrument panel, locking glove box, cigarette lighter, knit cloth-covered headliner, Custom door trim panels with rear armrests and Custom vinyl bucket seats (on the right).

Premium Interior Package

adds a plusher look to the inside with color-keyed shift lever console with rear ashtray; visor vanity mirror, glove box lock, cigarette lighter, woodgrain applique on the instrument panel, cloth-covered headliner, luxury steering wheel, vinyl bucket seats, cargo compartment carpet, sound insulation and deluxe color-keyed seat belts.

Premium Woodgrain Package

This Horizon, to the right, features the Premium Woodgrain Package. Elegant-looking woodgrain applique graces the body sides and lower liftgate panel. Also included are bright moldings on the center pillar, drip trough, sill, belt, upper door frame, body side and liftgate. Deluxe wheel covers add that final touch. (Optional Rallye wheels shown.)

Little packages that go a long way towards enhancing the looks of your inner and outer Horizon.



EQUALS

Horizon four-door and Horizon TC3 have more in common than just the same name. Like engineering. What's true for one is equally true for the other. Equal engineering features for an equally impressive performance.

Front-Wheel Drive

Chrysler Corporation introduced the first American-built small cars with front-wheel drive. Front-wheel drive provides excellent traction on wet and slippery roads due to greater weight over the drive wheels. Excellent directional stability is another benefit of front-wheel drive.

Rack-and-Pinion Steering

Rack-and-pinion steering is light-weight and space-efficient. This proved engineering feature offers a low turning effort, good returnability and excellent directional stability.

Suspension

MacPherson-type fully independent suspension with coil springs, shock absorbing struts with rubber isolators and an antisway bar for the front. In the rear, H-type with coil springs, shock absorber units and rubber isolators. This suspension system provides stable road handling.

Brakes

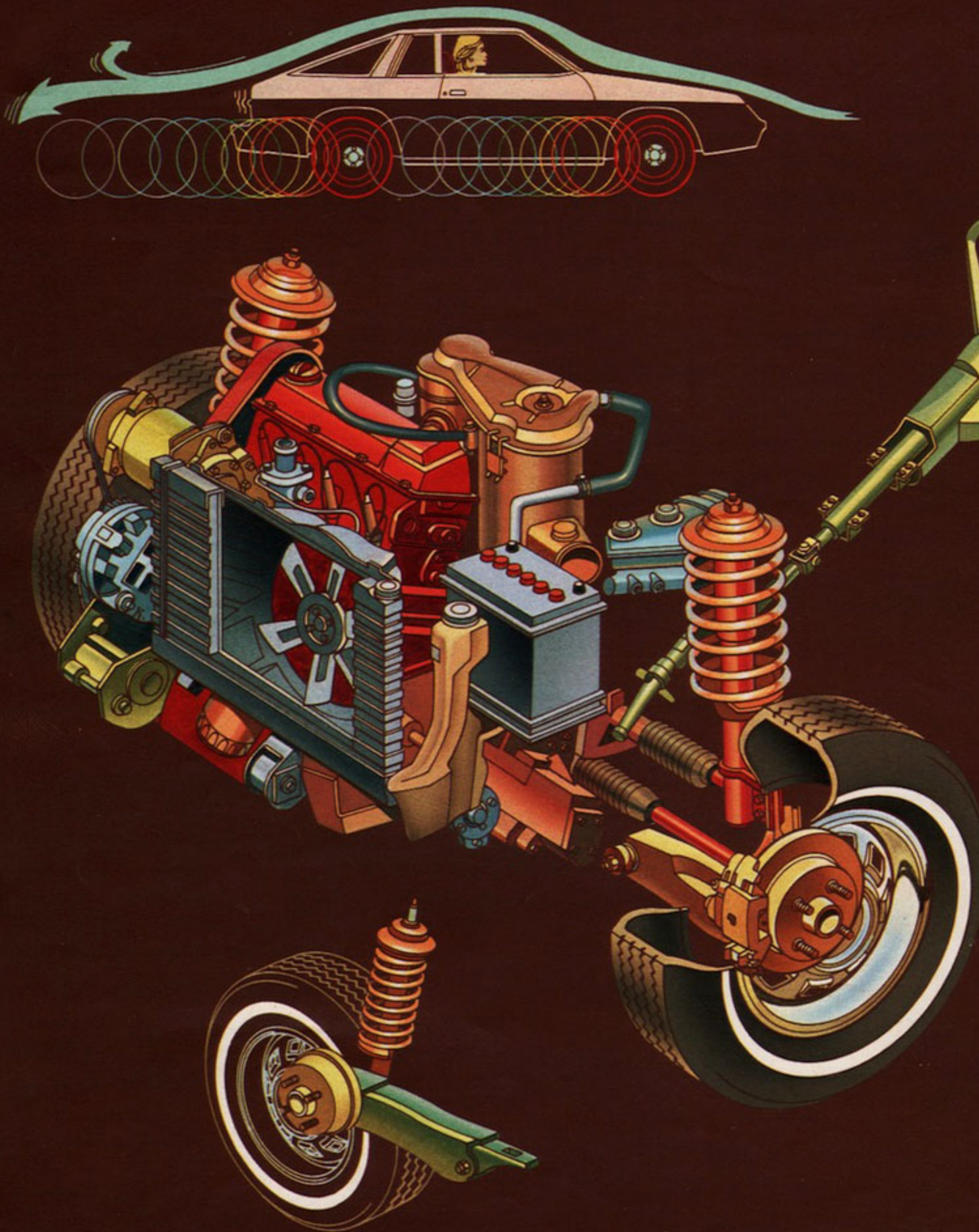
Diagonally balanced braking system has disc brakes in the front and drum brakes in the rear. This system has been improved to promote better brake lining life, reduce disc brake noise and improve brake rotor wear.

Radial Tires

Standard radial tires, combined with static tire balancing, provide excellent handling, better puncture protection and long tread life and help improve fuel economy.

Corrosion Protection

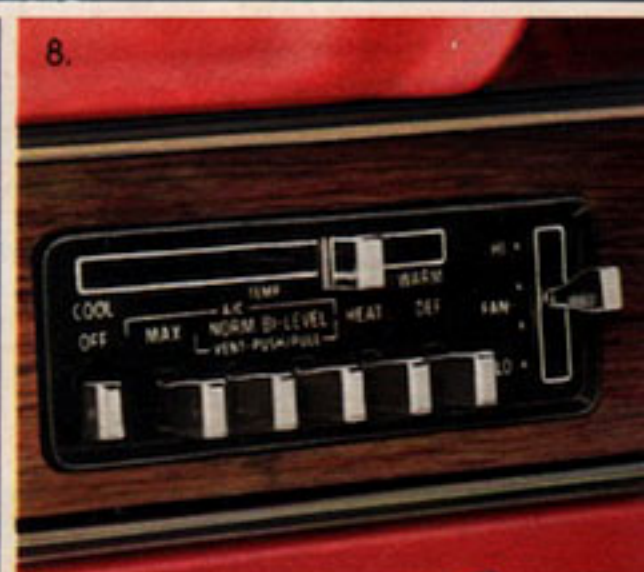
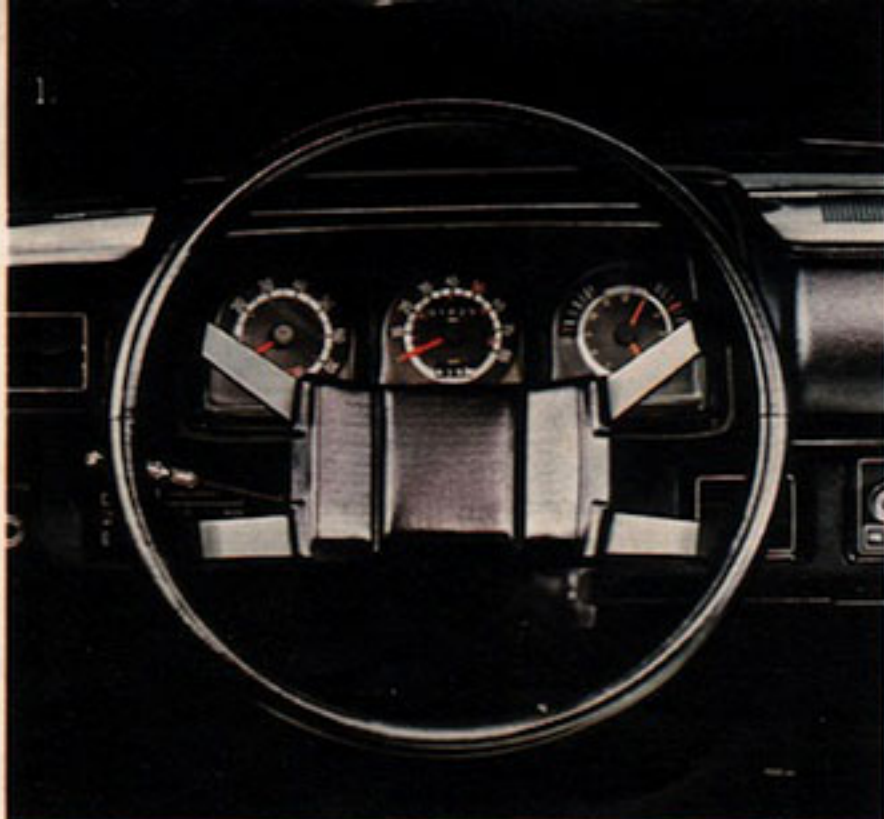
Chrysler Corporation's corrosion protection is unsurpassed in the industry. It includes the use of galvanized sheet metal panels, one of the best known methods of corrosion protection, as well as the seven-step dip-and-spray process. Both keep your Horizon looking new for years to come.



OPTIONS

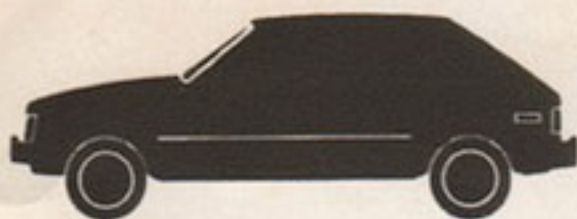
Once you've chosen your interior and exterior combinations, it's time to add your favorite options. Check your choice in the boxes on the Ready-to-Order Form (pages 10 and 11); then take it to your local Chrysler-Plymouth dealership. They'll do the rest!

1. Deep-dish four-spoke sport steering wheel is optional on the four-door and TC3.
2. Sun-lovers' delight—a Tri-Lite sun roof with flip-up or removable glass panel.
3. The automatic transmission is optional on TC3 and four-door. Also pictured is the optional front storage module.
4. Automatic speed control and deluxe windshield wipers with intermittent feature are both new for 1980.
5. Power steering and power front disc brakes provide easier handling.
6. AM/FM stereo radio for your listening pleasure.
7. 5/50 Protection Plan. This optional service contract, the longest protection plan* of any domestic manufacturer, covers major power train components for five years or 50,000 miles (whichever comes first) from the time you take delivery of your new Horizon. The plan, which has a \$50 deductible per repair visit, also has an allowance for alternate transportation and towing. Ask your dealer for full details.
*Provisions of plans may vary with manufacturer.
8. Air conditioning is a must for some drivers.
Ask your dealer for details regarding restrictions applicable to the later installation of air conditioning.
9. Horizon's multipurpose roof rack can be adapted for skis, bikes or luggage. (Ski rack comes in pairs. One set will hold two pairs of skis. Illustration shows two sets, holding four pairs of skis.)
10. Convenient rear wiper/washer is available on four-door Horizon.



1980 READY-TO-ORDER FORM EXTERIOR PACKAGES

Certain models, packages and options are subject to specific restrictions, requirements and late availability. Consult your dealer for current information.



- Horizon Four-Door**—Includes bright grille highlights; bright bumpers with rub strips; bright windshield, rear window and headlamp moldings; black vinyl body-side moldings; bright taillamp accents and white sidewall tires.



- Horizon Four-Door Custom Exterior Package**—Includes all four-door features plus bright sill, drip trough, wheel-opening and door upper frame moldings. (Black vinyl body-side molding—Base and Custom only.)



- Horizon Four-Door Premium Exterior Package**—Includes all four-door features plus bright moldings on drip trough, center pillar, upper door frame, belt line, wheel opening, sill, body side and liftgate. Plus deluxe wheel covers.



- Horizon Four-Door Premium Woodgrain Package**—Includes all four-door features plus woodgrain body side and lower liftgate panel appliques, body moldings (except wheel opening) and deluxe wheel covers.



- Horizon TC3**—TC3's sleek aerodynamic styling is highlighted by bright drip, sill and wheel opening moldings, a sport mirror, wheel trim rings and black sidewall tires.



- Horizon TC3 Premium Exterior Package**—Includes TC3 features plus bright and black rub strips, front and rear, and body-side and rear tape stripes along with deluxe wheel covers and white sidewall tires.



- Horizon TC3 Turismo Package**—Includes black windshield, backlight, belt molding and door handle inserts. Also included are body-side and rear spoiler decals and cast aluminum wheels.

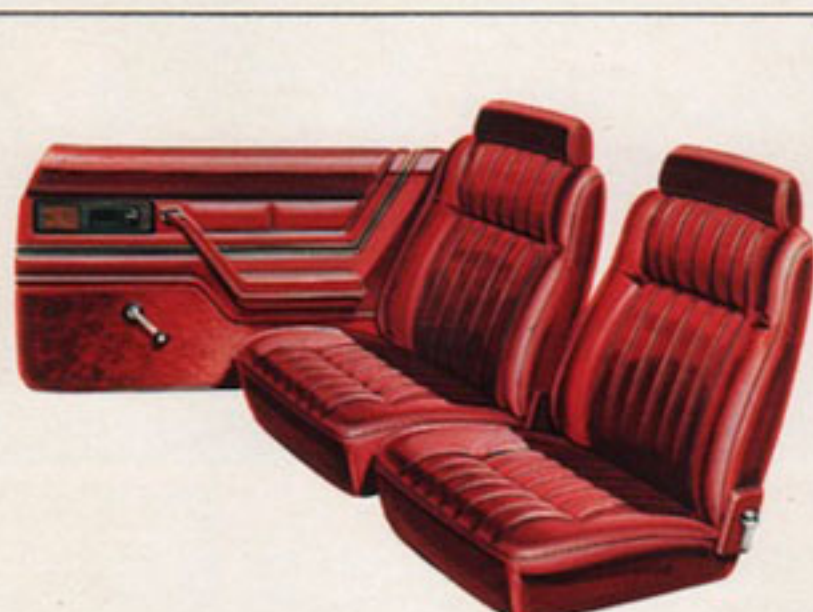


- Horizon TC3 Sport Appearance Package**—Includes black molding body accents with blackout lower body paint, black moldings; and painted Rallye wheels with bright hubs and trim rings.

INTERIOR TRIM



- Four-Door and TC3 Premium cloth-and-vinyl bucket seats**—Cloth-and-vinyl bucket seats with adjustable headrests, easy entry system (TC3) and passenger-side reclining seatback. Colors offered are blue, red, cashmere or black. (TC3 trim panel shown.)



- TC3 Premium interior**—All-vinyl, low-back bucket seats with adjustable headrests, easy entry system and reclining passenger seatback. Offered in blue, red, cashmere or black.



- Four-Door and TC3 Custom vinyl bucket seats**—Custom-level vinyl bucket seats are offered in blue, red, cashmere or black. (Four-door trim panel shown.)



- Four-Door and TC3 Custom cloth-and-vinyl seats**—High-back bucket seats in cloth-and-vinyl are available in the TC3 and with the Custom Interior Package on the four-door hatchback. Offered in blue, red or cashmere. (Four-door trim panel shown.)



- TC3 plaid cloth-and-vinyl seats**—Colorful plaid cloth-and-vinyl bucket seats with integral head restraints are available in yellow/black or red/black plaid. Offered only with selected exterior colors.



- Four-Door all-vinyl interior**—Individually adjustable all-vinyl bucket seats are standard on Horizon four-door. Offered in cashmere or black.