

# 1976 Dodge Sportsman Wagons.

Built to give you your  
wagon's worth.





# Dodge Sportsman wagon: 109-inch wheelbase.

## It's big on families, small on pocketbooks.

The compact 109-inch-wheelbase Sportsman wagon is light enough to save on gas, yet roomy enough to handle family-sized loads. Further economy is yours with Dodge's small standard Six and V8 engines. You get new riding comfort with an improved rear leaf-spring suspension. Standard dependability is built in with features such as the Electronic Ignition System that has no points or condenser to worry about. Standard interior on the 109-inch wheelbase is the Sportsman. See pages six and seven for additional interior trim choices. And check the chart at right for measurement specs. Pick the 109-inch-wheelbase Sportsman wagon and get an extra measure of what you buy a family wagon for. Shown below: B100 Sportsman wagon on a 109-inch wheelbase, with Custom Sportsman package.



MODEL	WHEEL-BASE (in.)	OVERALL LENGTH (in.)	PAYLOAD ALLOWANCE (lb.)	
			MIN.*	MAX.*
B100	109	176	1,185	1,559
B200	109	176	1,812	2,337

\*Includes driver and all passengers.

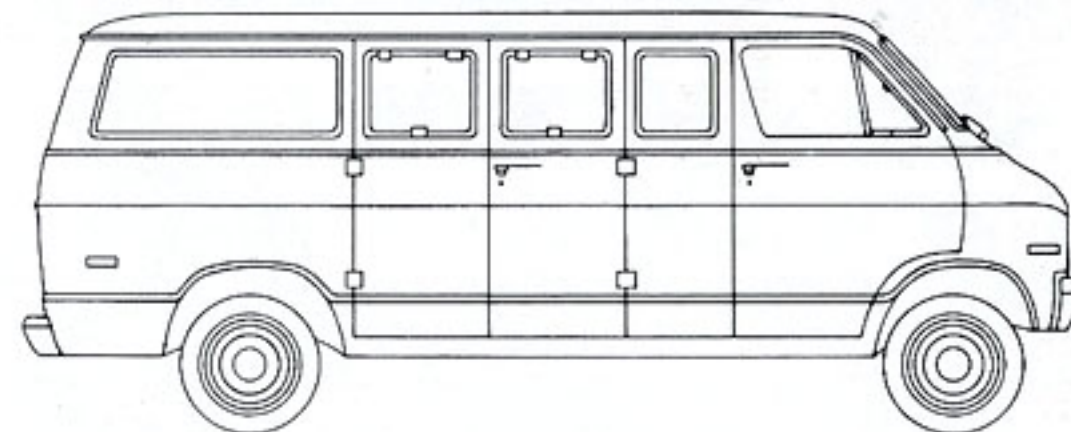




# Dodge Sportsman wagon: 127-inch wheelbase.

## Seats up to twelve and handles like a compact.

This Sportsman can stow away the Little League champs and all their gear with no problem. Just order the optional 12-passenger seating. And throw in the exclusive, optional single rear door that can be opened and closed with one hand. And a sliding side door. Going to the game, you'll appreciate the great maneuverability and small turning diameter. Interior trim choices include the Royal Sportsman SE, Royal Sportsman, Custom Sportsman, and Sportsman. See pages six and seven for details on exteriors and interiors. The chart at right gives specific measurements. If you need a wagon that can seat a bunch and maneuvers easily, choose the B300 127-inch-wheelbase Sportsman for 12 passengers. Shown below: B200 Sportsman wagon on a 127-inch wheelbase, with Royal Sportsman SE trim package.



MODEL	WHEEL-BASE (in.)	OVERALL LENGTH (in.)	PAYLOAD ALLOWANCE (lb.)	
			MIN.*	MAX.*
B100	127	194	1,040	1,424
B200	127	194	1,667	2,192
B300	127	194	2,485	3,440

\*Includes driver and all passengers.

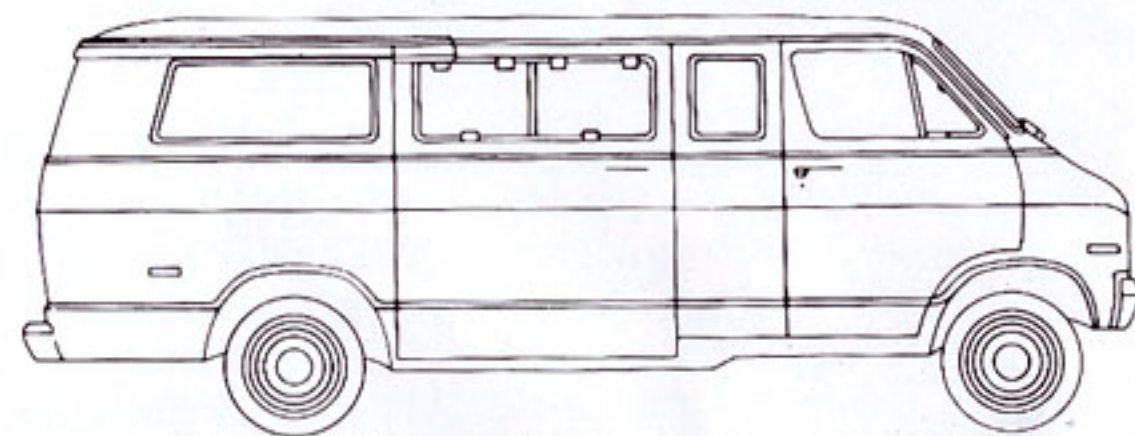




# Dodge Sportsman Maxiwagon: 127-inch wheelbase.

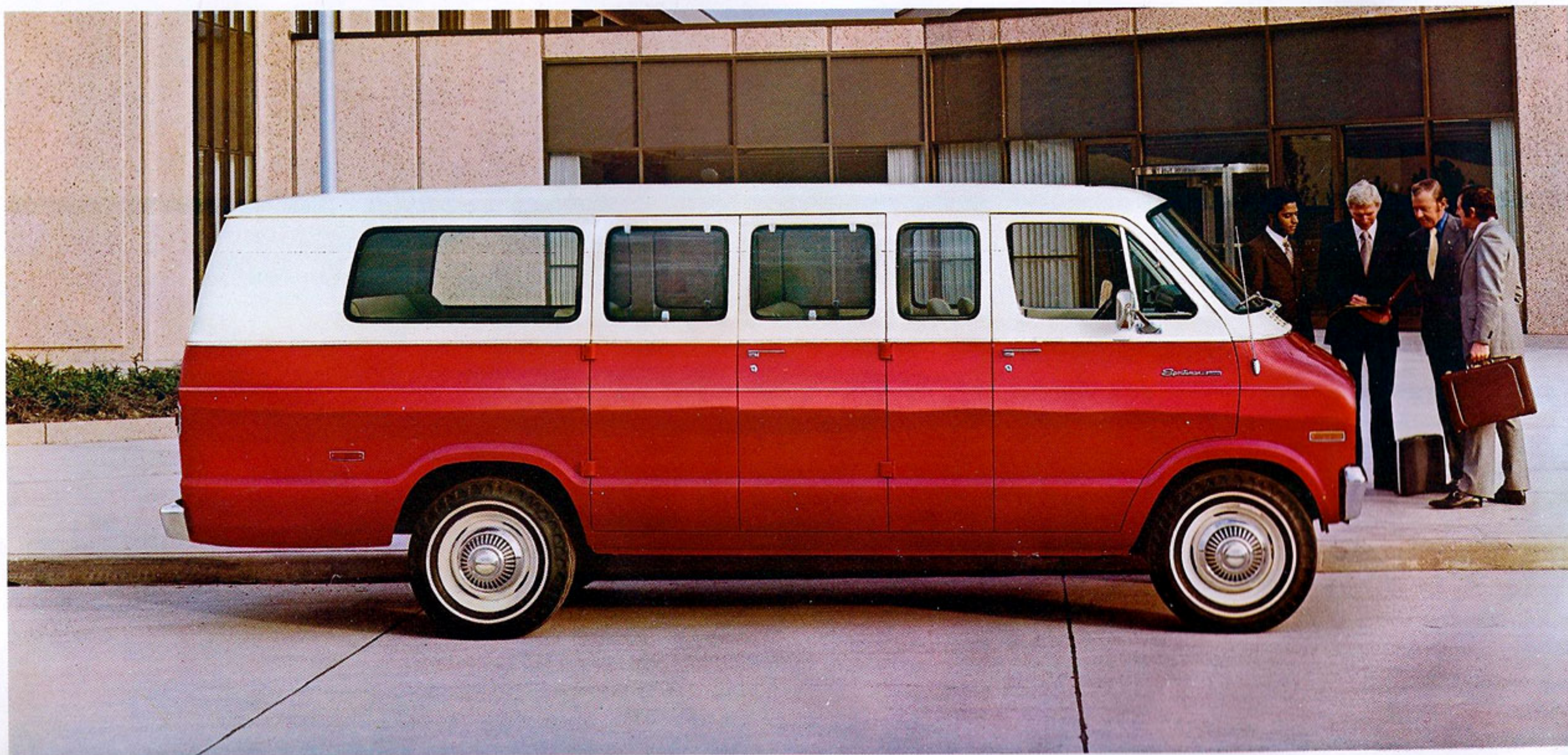
## America's most popular wagon in its biggest version.

With its exclusive size, Maxiwagon's best asset is the way it takes care of people. Up to fifteen adults with optional seats in the B300 model. This has to make Maxiwagon the ideal vehicle for employee car pools, schools, and families that need a lot of seating capacity. It's the popular choice for wagon features, too. Like the independent front suspension that soaks up every bump around. And the fade-resistant power front disc brakes. Good-looking interior choices include the Royal Sportsman SE, Royal Sportsman, Custom Sportsman, and Sportsman. See pages six and seven for more details on interiors and exteriors. The chart at the right gives measurement specs. Most people choose the Sportsman Maxiwagon when they want to transport more folks, more places, more comfortably. That's why it's America's most popular big wagon. Shown below: B200 Sportsman Maxiwagon on a 127-inch wheelbase, with Custom Sportsman trim package.



MODEL	WHEEL-BASE (in.)	OVERALL LENGTH (in.)	PAYLOAD ALLOWANCE (lb.)	
			MIN* <sup>‡</sup>	MAX* <sup>‡</sup>
B200	127	212	1,992	1,992
B300	127	212	2,380	3,335

\*Includes driver and all passengers.

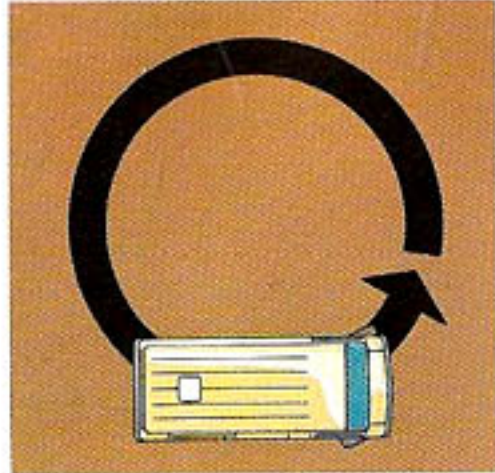




# Some standard items that make Sportsman America's favorite compact wagon.



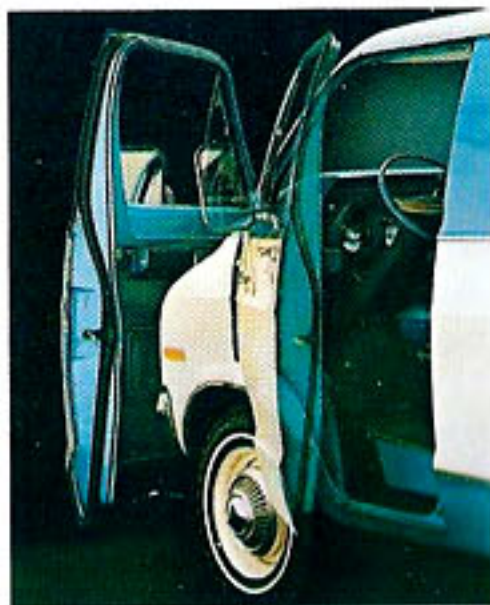
**Easily Accessible Engine**  
Makes maintenance and repair work fast and simple. Commonly checked parts like the dipstick, battery and radiator are in plain sight up front.



**Better Maneuverability**  
Sportsman's short turning circle is one of the tightest around; lets you steer clear of close situations.



**Sturdy Fiber-Glass Engine Cover**  
Protects you from noise and heat; and lifts off easily for engine maintenance.



**Two-Stage Front Door Check**  
Holds the door open halfway or all the way, for your convenience.



Royal Sportsman SE, on a 127-inch wheelbase.

**Power Front Disc Brakes**  
Stopping power that's quick and dependable. Disc brakes are fade-resistant. Rear brakes are the drum-type.



**Large Gas Tank**  
With a capacity of 22 gallons, it is one of the biggest in the compact field. An optional 36-gallon tank is also available. Those extra gallons can make the difference in finishing a day's driving on a single tankful.



**Heavy-Duty Alternator**  
Either 52- or 63-amp, to add to dependable performance. Optional, all models. (52-amp alternator with front air conditioning and trailer-towing packages; 63-amp with rear air conditioning.)



**Independent Front Suspension**  
Coil springs give smooth riding comfort over the roughest roads. Suspension can be aligned on regular passenger-car alignment equipment. New rear leaf-spring suspension refinements improve the ride in back.



# Dodge Sportsman wagon interiors.

## Royal Sportsman SE

Wagon seats never looked better or sat better. Multicolored upholstery covers foam high-back bucket seats, rear bench seat, doors, and side trim panels. Bucket seats have inboard fold-down armrests. Color-keyed carpeting, trim panel mouldings, carpeted engine housing cover. Your color choice of gold or parchment. And to make the interior even better, added insulation and an attractive color-keyed headliner throughout. Exterior includes Royal Sportsman SE nameplate, bright dual mirrors, bright front and rear bumpers, hubcaps, bright grille, and window mouldings. Also bright tail lamp bezels; upper front, side and rear mouldings.

## Royal Sportsman with Optional High-back Bucket Seats.

Choose this handsome interior and you have an added reason to enjoy your Sportsman wagon: these stylish bucket seats, with armrests, upholstered in cloth and vinyl, with high backs for comfort. Color choice of blue, green or parchment. This interior provides color-keyed carpeting throughout, vinyl-trim side panels, added insulation, and much more. Royal Sportsman exterior includes Royal Sportsman nameplate, bright dual mirrors, bright front and rear bumpers, bright hubcaps, bright grille and window mouldings, bright tail lamp bezels, upper front, side and rear mouldings.





## Royal Sportsman

Here's an interior that's as easy on the eyes as it is comfortable for the driver. Foam bucket seats, rear bench seat, and door and side panels are upholstered in handsome all-vinyl fabric with wood-grain. Carpeting is color-keyed throughout. Features include: full headliner, cigarette lighter, padded instrument panel with wood-grained insert. Color selections include blue, green, parchment and black. Also available (not shown) is a cloth-and-vinyl Royal Sportsman interior, to add to the choice.



## Custom Sportsman

This one is long-wearing and good-looking, too. Seats are color-keyed with the interior and covered with durable vinyl fabric. Other standard items include padded instrument panel, color-keyed, padded floor mats, instrument cluster trim dress-up, horn bar, and cigarette lighter. Four color choices: blue, green, parchment, and black. Exterior provides Custom Sportsman nameplate, upper front and side exterior moulding, bright hubcaps and bright tail lamp bezels. The standard Sportsman interior (not shown) is also available to complete the big Dodge choice, and meet the needs of those who want maximum utility with maximum economy.

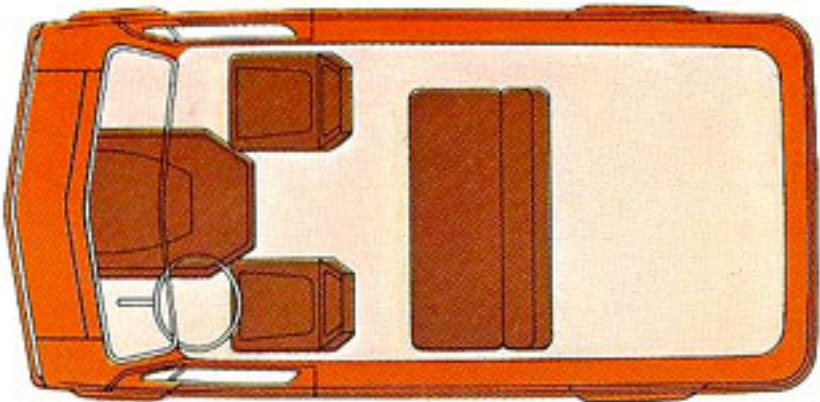




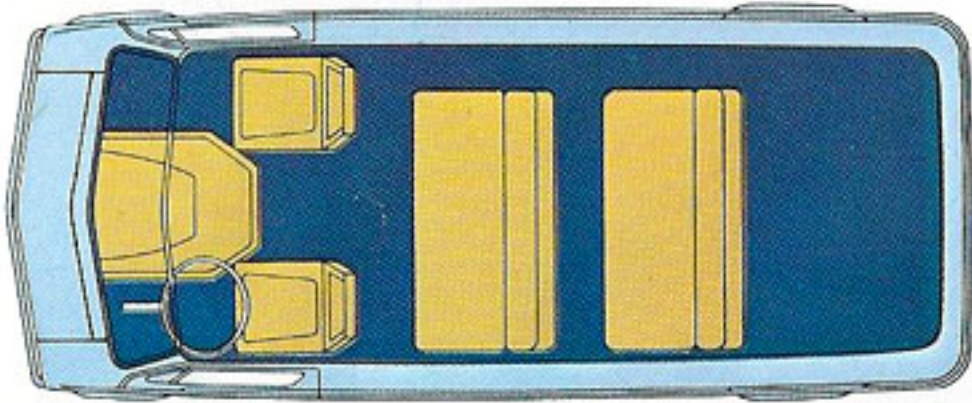
# Dodge Sportsman wagon

## Seating to suit your needs.

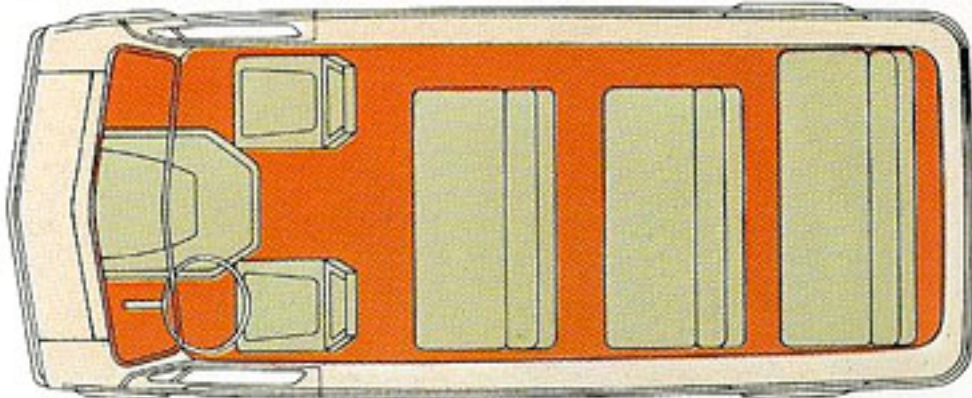
Dodge Sportsman wagons can be tailored to your personal tastes and requirements, precisely. For example, look at the seating choices you get. Standard capacity for five passengers... with optional seating for up to fifteen passengers. Here's how it works:



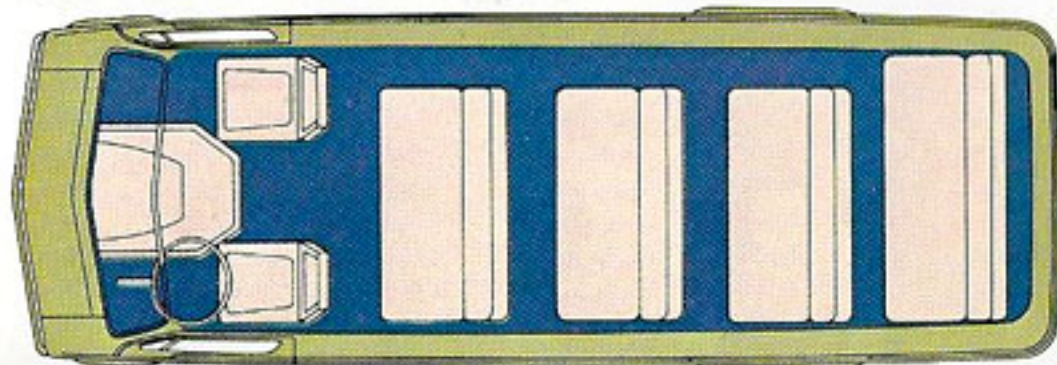
This seating, for five passengers, is standard.



Or add an optional bench seat, for eight-passenger capacity (109" and 127" wb, B200 and B300).



Or add two optional bench seats for 12-passenger capacity (127" wb, B300).



And in the extra-big B300 Maxiwagon models, you can add still another bench seat, for carrying up to 15 people.

## Standard Equipment

- Air cleaner—dry-type
- Alternator—48-amp
- Antifreeze
- Armrests—driver and front passenger
- Ashtray—driver's compartment
- Battery—48-amp-hr
- Bumpers—front and rear, painted
- Disc brakes—front
- Doors, passenger-side & rear, double
- Door locks—all doors
- Electronic Ignition System
- Floor mat—driver's compartment side only
- Fuel tank—22 gallons
- Glove box with door
- Headliner—driver's compartment
- Heater—Fresh Air with defroster
- Horns—dual electric
- Hubcaps—painted
- Jack—axle-type (B300); bumper-type (B100 and B200)
- Lights—backup; combined side marker light and reflector; front, amber (2); rear, red (2); dome, driver and passenger compartment
- Mirrors, exterior—dual, painted, 5" x 7"
- Oil filter—throw-away-type
- Oil pressure indicator light
- Seats—front low-back buckets: driver and passenger with seat belts and retractors; bench—three-passenger with seat belts
- Shock absorbers—front and rear
- Spare tire carrier
- Sun visors—padded
- Traffic hazard warning switch
- Windshield washers—wiper-arm-mounted
- Windshield wipers—two-speed

## Antispin Differential

Gets you out of trouble in mud or snow. If one wheel starts spinning, the power is automatically transferred to the other wheel.



## Exclusive Single Rear Door

Full-width rear door can be opened with one hand, affords good visibility through the rear. One-position door check holds it fully open. Mandatory option with the Royal Sportsman SE package.



# selected optional equipment.

## Sliding Side Door

When you're forced to load or unload in a tight place and there's no room to open a door, the sliding side door becomes a real convenience. Mandatory option with the Royal Sportsman SE package... available at extra cost on all other 127" wheelbase models.



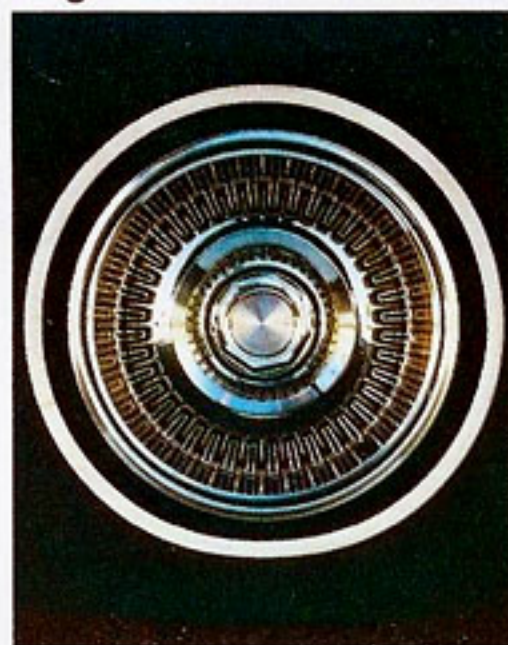
## LoadFlite Automatic Transmission

Constantly refined and improved—one of the best on the road. LoadFlite is especially popular with drivers who spend a good deal of time in city traffic.



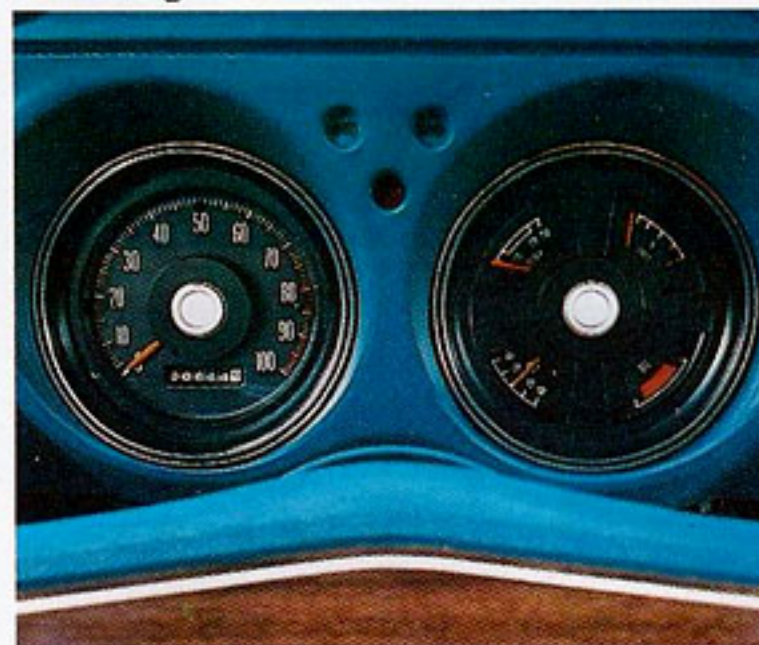
## Premium Wheel Covers

Add an elegant outside touch to your Sportsman wagon.



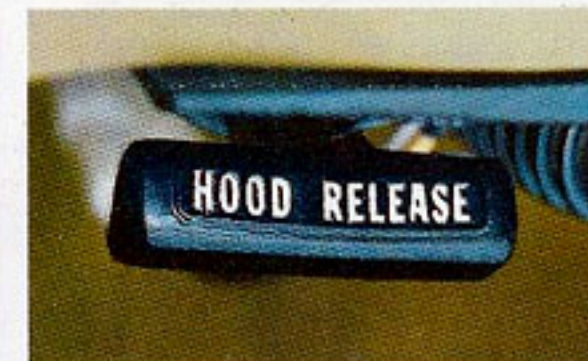
## Easy-to-Read Gauges

...such as alternator and temperature ...add to convenient, trouble-free motoring.



## New Auxiliary Air Conditioner

You get extra cooling in the rear compartment, through outlets that don't take up space.



## Car-Like Instrument Panel

Adds stylish interior appearance and driving convenience. Instruments are easy to reach, with the steering wheel at a comfortable angle. Optional air conditioning gives real inside comfort on hot-weather vacation trips. (New auxiliary air conditioner, available with 8-cylinder engine required for all air conditioning, increases rear compartment cooling.) Order an AM/FM radio for entertainment.

## Inside Hood Release

With the hood release inside, your engine is protected against tampering, wherever you are.

## Automatic Speed Control

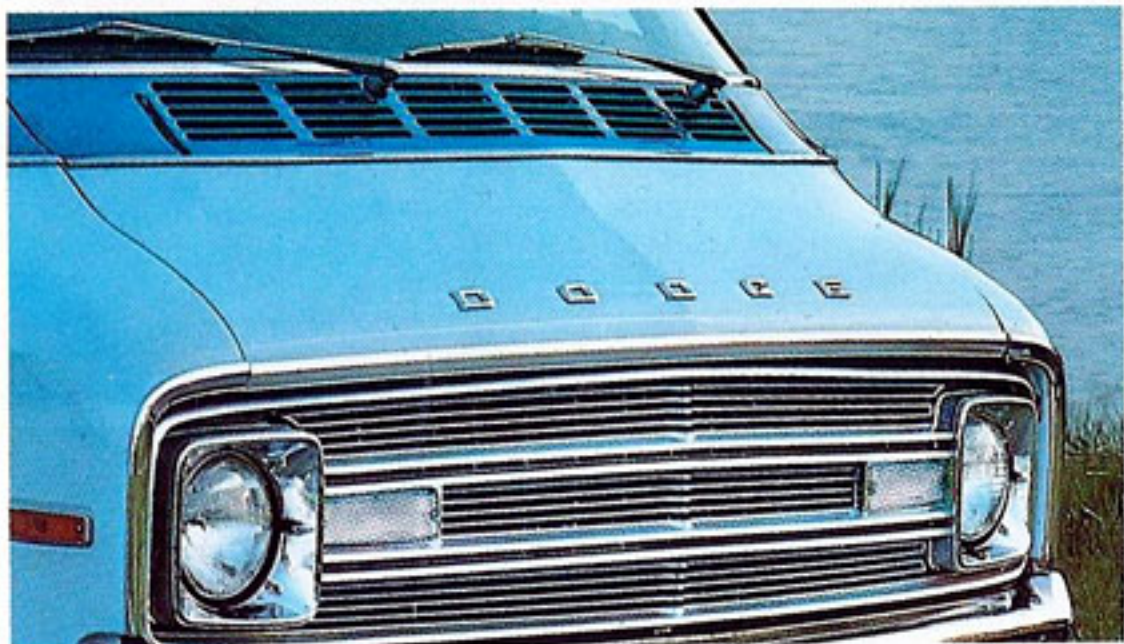
A real winner on long distance trips. Set the speed you prefer and concentrate on the rest of your driving. Holds on speed setting until released.



# Selected standard equipment.

## Grille and Air Intake Vents

Grille is attractively styled like a passenger car's with a neat, uncluttered look. Air vents are located at a high level, provide a constant supply of cooler, cleaner air in the passenger compartment.



## Bright-Finish Hubcaps

Give a custom, passenger-car appearance to the wheels. Optional for Sportsman, included in Custom, Royal and Royal SE packages.



## Electronic Ignition System

Eliminates points and condenser, common causes of engine trouble. Extends spark plug life and lowers maintenance costs. Aids sure starting.



## Side Windows

Push-out-type side windows let in fresh air, can't be opened wide enough for kids to climb out.



## Power Brakes

Power-assist brakes make braking almost effortless.

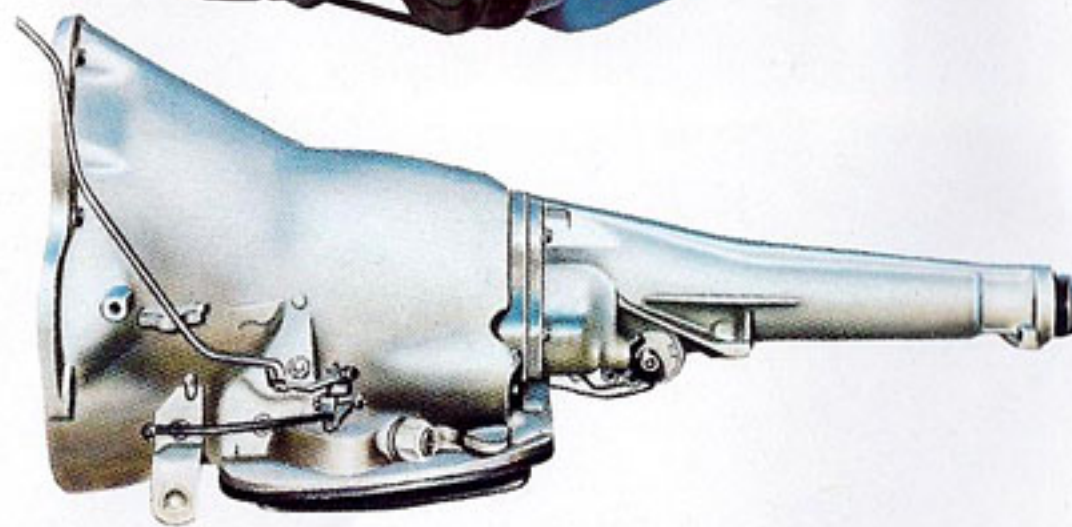
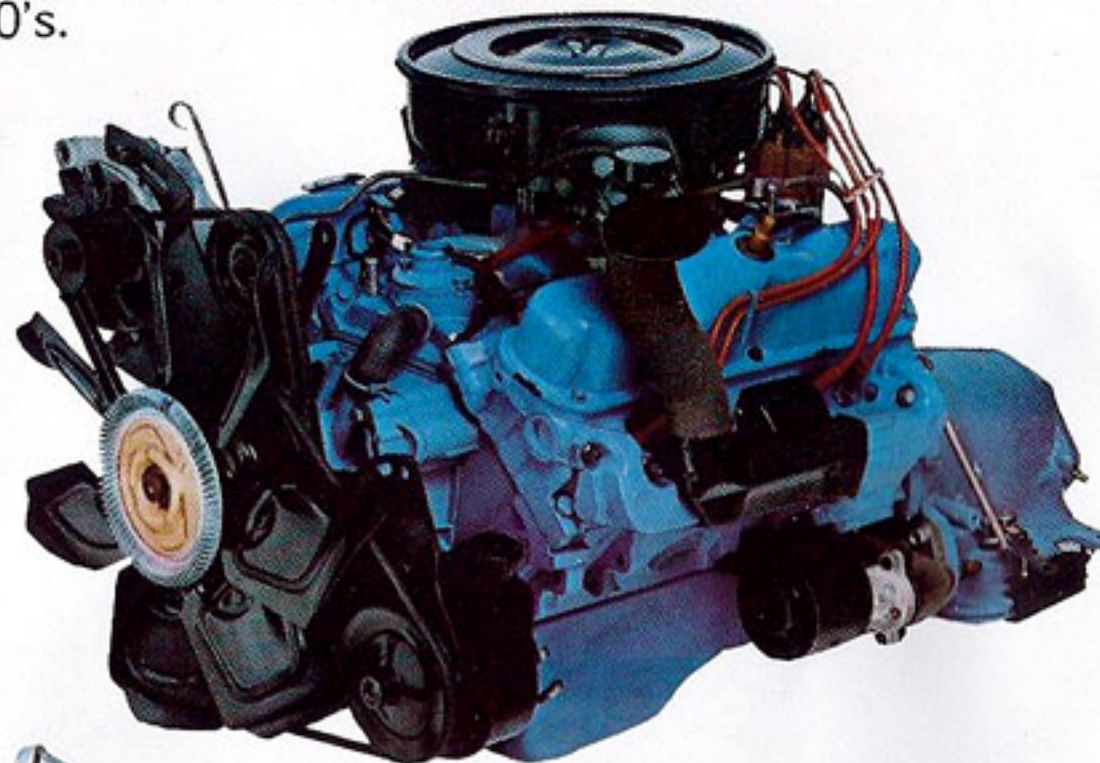
## Other available options:

- Convenience package
- Insulation package
- Battery—59-amp-hr or 70-amp-hr
- Front and rear bright-finish bumpers (standard with Royal Sportsman SE and Royal Sportsman packages)

- Cigarette lighter
- Heavy-duty clutch (6-cylinder only)
- Vented glass rear doors
- Tinted glass—windshield only or all windows
- Passenger compartment headliner (for Sportsman only)

## Engine Availability

Standard engines for Sportsman wagons are matched to the wheelbase and the intended use of the vehicle. Two gas-savers—the 225-cubic-inch Slant Six and the 318-cubic-inch V8—are standard on B100 and B200 models. The 318 engine is standard on the B300. A more powerful 360-cubic-inch V8 is optional on all models. A 440-cubic-inch V8 is optional on the 127" wheelbase B200 with 6,100 pounds GVW, and on all B300's.



## Transmissions

Dodge transmissions are also geared to wagon capacity. Standard transmission for B100 and B200 wagons equipped with standard Six and V8 engines is the hefty three-speed manual. The LoadFiite automatic transmission is standard on the B300 wagon and available as an option on the B100 and B200 models. It includes a fluid-level warning light on the instrument panel.

- Deluxe heater
- Horn bar (for Sportsman only)
- Bright-finish hubcaps (for Sportsman only)
- Padded instrument panel (for Sportsman only)

- Interior day/night prismatic mirror
- Increased cooling
- Oil pressure gauge
- Power steering
- Front and rear heavy-duty shock absorbers
- Road wheels, chrome-styled



**The following items are standard with the Sportsman:**

Argent-finish grille  
Exterior dual 5" x 7" painted mirrors  
Painted hubcaps  
Front and rear painted bumpers  
Driver compartment floor mat  
Driver compartment headliner  
Sportsman nameplate

**The following items are standard with the Custom Sportsman:**

Argent-finish grille  
Exterior dual 5" x 7" painted mirrors  
Bright-finish hubcaps  
Front and rear painted bumpers  
Padded floor mat throughout  
Headliner throughout  
Meadboard trim below belt  
Custom Sportsman nameplate  
Bright tail lamp bezel

Upper front and side exterior moulding package  
Padded instrument panel  
Instrument cluster trim dress-up  
Horn bar  
Cigarette lighter  
Fiber-glass window trim  
Spare tire cover

**The following items are standard with the Royal Sportsman:**

Bright moulding around grille  
Dual bright-finish 5" x 7" mirrors  
Bright-finish hubcaps  
Bright-finish front and rear bumpers  
Color-keyed carpeting throughout  
Headliner throughout  
Royal Sportsman nameplate  
Bright tail lamp bezel  
Upper front, side, and rear exterior moulding package  
Padded instrument panel with

vinyl wood-grained insert  
Horn bar  
Cigarette lighter  
Fiber-glass window trim  
Spare tire cover  
Deluxe vinyl seat trim  
Vinyl-trim side panel w/woodgrain  
Added insulation  
Bright-finish windshield moulding  
Bright-finish side and rear window moulding  
Bright instrument cluster trim

**The following items are standard with the Royal Sportsman SE:**

Bright moulding around grille  
Dual bright-finish 5" x 7" mirrors  
Bright-finish hubcaps  
Bright-finish front and rear bumpers  
Color-keyed sun visors  
Color-keyed carpeting throughout  
Color-keyed headliner throughout

Royal Sportsman SE nameplate on door interior and exterior  
Bright tail lamp bezel  
Upper front, side, and rear exterior moulding package  
Color-keyed padded instrument panel with vinyl wood-grained insert  
Horn bar  
Cigarette lighter  
Fiber-glass window trim  
Spare tire cover  
Color-keyed vinyl trim side panel  
Added insulation  
Bright-finish windshield moulding  
Bright-finish side and rear window moulding  
Carpeted engine housing cover  
Bright instrument cluster  
High-back cloth-and-vinyl bucket seats with inboard fold-down armrests and deluxe cloth-and-vinyl bench seats

**Exterior colors**



\*This color is an extra-cost paint on all models.

**SPECIFICATIONS**

MODELS	B100 WAGON MODELS	B200 WAGON MODELS	B300 WAGON MODELS
ALLOWABLE DRIVER, PASSENGER, LUGGAGE AND LOAD WEIGHT (a) STANDARD—FOR 109" WB —FOR 127" WB —FOR 127" WB MAXIWAGON	1185 LBS. 1040 LBS. —	1810 LBS. 1665 LBS. 2035 LBS.	— 2485 LBS. 2380 LBS.
MAXIMUM—FOR 109" WB —FOR 127" WB —FOR 127" WB MAXIWAGON	1560 LBS. 1425 LBS. —	2380 LBS. 2235 LBS. 2035 LBS.	— 3440 LBS. 3335 LBS.
AXLE, FRONT—CAPACITY	3100 LBS.	3100 LBS.	3300 LBS.
AXLE, REAR—CAPACITY	2700 LBS.	3300 LBS., 3600 LBS.(b)	5500 LBS.
—RATIOS FOR 6-CYL. MODELS —RATIOS FOR 8-CYL. MODELS	3.5, 3.2 3.2, 2.7, 3.5	3.55, 3.2 3.2, 2.7, 3.5	— 4.1, 3.5
BRAKES—SERVICE W/DUAL MASTER CYLINDER & WARNING LIGHT —FRONT DISC —REAR DRUM	YES 11.75" X 1.25" 10" X 2.5"	YES 11.75" X 1.25" 11" X 2.5"	YES 12.82" X 1.19" 12" X 2.5"
BRAKES, POWER	VACUUM 9" OUTSIDE DIAMETER DUAL DIAPHRAGM BOOSTER		
CLUTCH—FOR 6-CYL. MODELS —FOR 8-CYL. MODELS	10" DIA., 11" DIA. 11" DIA.	10" DIA., 11" DIA., 11" STD. ON MAXIWAGON 11" DIA.	— —
ENGINE—6-CYL. MODELS —8-CYL. MODELS	225 CU. IN. 318 CU. IN., 360 CU. IN.	225 CU. IN. 318 CU. IN., 360 CU. IN., 440 CU. IN.	— 318 CU. IN., 360 CU. IN., 440 CU. IN.
SPRINGS, FRONT—COIL —FOR 6-CYL. MODELS—CAP. @ GROUND —FOR 8-CYL. MODELS—CAP. @ GROUND	1540 LBS., 1615 LBS. 1540 LBS., 1615 LBS.	1540 LBS., 1615 LBS. 1540 LBS. (109" WB) 1615 LBS. (127" WB) 1615 LBS. (109" WB) 1690 LBS. (127" WB)	— 1645 LBS., 1720 LBS.
SPRINGS, REAR—LEAF—CAP. @ GROUND	1170 LBS., 1390 LBS.	1640 LBS., 1790 LBS.	2020 LBS., 2570 LBS.
TRANSMISSION	3-SPD. MANUAL, A727—AUTOMATIC	3-SPD. MANUAL, A727—AUTOMATIC	A727—AUTOMATIC
TIRES (5) TUBELESS B/W PASS.-CAR-TYPE  (5) TUBED B/W TRUCK-TYPE	E78-15-B (4 PR.) 109" WB F78-15-B (4 PR.) 127" WB HR78-15-B (4 PR.)(c) 7.00-15-C (6 PR.)	G78-15-B (4 PR.) 109" & 127" WB H78-15-B (4 PR.) 127" WB (b) LR78-15-B (4 PR.)(c) 7.00-15-C (6 PR.)	— — 8.00-16.5-D (8 PR.)(a), 8.75-16.5-E (10 PR.)(d)
WHEELS (5) FIVE-STUD DISC (5) EIGHT-STUD DISC	15" X 5.50", 15" X 6.50" —	15" X 5.50", 15" X 6.50" —	— 16.5" X 6.0", 16.5" X 6.75"

(a) Based on standard Sportsman wagon with 22 gals. of fuel, oil, and water. Subtract 98 lbs. for Custom Sportsman package, 132 lbs. for Royal Sportsman package, 140 lbs. for Royal SE package, or 105 lbs. for V8 engines.  
(b) Maxiwagon only.  
(c) WSW steel-belted radial.  
(d) Tubeless blackwall truck-type.  
NOTE: Models registered in California require optional Emission Reduction Control System and test (all B100 models and B200 with 5,500-pound GVW) or optional Emission Reduction Control System (B200 with 6,100-pound GVW and all B300 models).





### Sportsman wagon versatility is ideal for vacations.

There's room for up to 15 passengers or a small mountain of vacation gear... depending on the model and seating arrangement you select. And if your holidays include the use of a trailer, your Dodge Dealer will be happy to assist you in ordering the right trailer-towing package to suit your needs. Ask your Dealer for a copy of the Dodge Trailer-Towing and Recreational Vehicle Catalog.

### HERE'S THE "CLINCHER"

"For the first 12 months of use, any Chrysler Motors Corporation Dealer will fix, without charge for parts or labor, any part of our 1976 passenger cars we supply (except tires) which proves defective in normal use, *regardless of mileage.*"

Of course, the owner is responsible for maintenance service such as changing filters and wiper blades.



**Dodge**

**Dodge Trucks**



**YOUR SIGNS FOR  
MOTORING SATISFACTION**



All product illustrations and specifications are based on authorized information. Although all descriptions are believed correct at publication approval, accuracy cannot be guaranteed. Some of the equipment shown on product illustrations is optional at extra cost. Dodge reserves the right to make changes from time to time, without notice or obligation, in prices, specifications, colors and materials and to change or discontinue models.