

Jeep[®]



2007 JEEP[®] PATRIOT

An original, next-generation representation
of a genuine classic.

For more information, please visit www.jeep.com/patriot

Jeep is a registered trademark of DaimlerChrysler Corporation
©1995-2006 DaimlerChrysler. All Rights Reserved. For important information, go to jeep.com/privacy

Page 1 of 7



DESIGN OVERVIEW

Unmistakable—Patriot’s unmistakable seven-slot grille and round headlamps echo over 65 years of legendary Jeep® vehicles that deliver fun, freedom, and adventure. Patriot’s classic, rugged styling takes Jeep’s legendary DNA in a new and adventurous direction, with angular lines, trapezoidal wheel openings, and a timeless character that embodies the Jeep spirit of adventure.



YES ESSENTIALS® FABRIC

Patriot’s YES Essentials®* stain-, odor-, and static-resistant fabric helps keep seats fresh and clean longer than ever before. This advanced fabric withstands spot cleaning—even repeatedly in the same location—to retain like-new color and texture over time.

** Not compatible with aftermarket fabric-protecting coatings. YES Essentials is a registered trademark of Milliken & Company. See yesessentials.com for fabric care instructions*



LED FLASHLIGHT

Clever! Patriot Limited and Sport E-Package’s standard self-recharging lithium battery-powered LED cargo lamp, is easily removable for dual-purpose duty as a just-in-the-nick-of-time, thought-I-was-in-the-dark flashlight. Functional utility, the Jeep® brand way.

PATRIOT FEATURES



ELECTRONIC STABILITY PROGRAM (ESP)*

A great defenseman. Traction can be compromised on wet, snowy, icy, sandy or loose gravel roads; hot, dry pavement can also form a thin layer of oil, causing a slick surface. Patriot’s Electronic Stability Program (ESP),* all-speed traction control, hydraulic Brake Assist, and Electronic Roll Mitigation (ERM) systems, work together by applying selective wheel braking and engine throttle control to help the driver maintain vehicle directional stability. There are three modes of ESP to choose from: full-on, partial, and full-off, for varying degrees of traction control.

** Always drive carefully, consistently with conditions. Always wear your seat belt and obey traffic laws.*



REAR-CARGO FLOOR PANEL

The non-skid UltraFloor™ vinyl cargo load floor is removable, washable, durable—and has a 250-lb load capacity.

UltraFloor is a trademark of Lear Corporation.



AIR BAG PROTECTION

Safety and security come first. Both Patriot Sport and Limited models feature standard next-generation multistage driver and front-passenger air bags,* supplemental side-curtain air bags,* and roll-sensing technology for additional side-impact protection. Available front-seat-mounted side air bags* help protect front occupants’ vulnerable lower midsections. All five passengers have shoulder restraint seatbelts.

** Always sit properly in the seat with the seat belt fastened.*

Jeep



2.4-LITER ENGINE

Strong. Efficient. The 172-horsepower 2.4-liter World Engine has loads of smooth, quiet, fuel-efficient power, with high-revving, highway-passing muscle when needed. The strong and efficient engine employs dual overhead cams (DOHC) and dual Variable Valve Timing (dVVT) on both intake and exhaust camshafts. The electronically controlled timing is continuously adjusted to provide either maximum power or fuel efficiency*—depending upon the demands of that instant. Enjoy 30 mpg* from a high-tech engine that features many high-tech features: intake manifold and exhaust flow control valves, dual overhead camshafts, four valves per cylinder, forged crankshaft and connecting rods, aluminum block, and an acoustic oil pan.

* 2.4L engine EPA mpg estimate 26 city/30 highway for 5-speed manual-equipped 4x2 models.



TOWING

Patriot has a 2,000-pound maximum towing capacity* when properly equipped with the Trailer Tow Group.

* 1,000-pound maximum towing capacity without Trailer Tow Group. Mopar accessory shown.



SUSPENSION

Mountain switchbacks. Parallel parking. Evasive maneuvers. Patriot offers smooth, agile, and responsive handling, thanks to its new independent MacPherson strut front and multi-link independent rear suspensions. Patriot also features unique shock tuning and high-strength steel springs for capable handling on mountain switchbacks and evasive maneuvers. Parallel parking is made easy, thanks to Patriot's standard rack and pinion steering.

PATRIOT CAPABILITY



FREEDOM-DRIVE I™ 4WD

For light off-road capability, choose the available Freedom-Drive I™ active full-time four-wheel drive (4WD) with LOCK mode. It's designed to give drivers year-round assurance, as well as the ability to handle rough weather and low-traction conditions such as rain and snow. LOCK mode can handle deeper snow, sand, and other low-traction surfaces at speeds under 10-mph. When equipped with Freedom-Drive I, Jeep® Patriot is the most fuel efficient 4x4 in its class.*

* Based on 2006 Automotive News Entry-level CUV segment. EPA est. 25 city/29 hwy when equipped with 5-speed transmission.

FREEDOM-DRIVE II™ 4WD OFF-ROAD GROUP

For advanced capability, choose Patriot's available Trail Rated® Freedom-Drive II™ Off-Road Group, with its Best-in-Class* off-road capability. Off-Road 4WD mode activates off-road antilock disk brakes (ABS), traction control, and optimized engine and transmission calibration for rock crawling. Other unique features include: hill descent control, brake lock differentials, 19:1 overall crawl ratio, one-inch higher ground clearance, heavy-duty cooling system, skid plates, tow hooks, fog lamps, additional electrical and body sealing, and 19-inch water fording capability.

* When properly equipped with Freedom-Drive II Off-Road Group. Based on the 2006 Automotive News Entry-Level Crossover-Utility Vehicle Segment. Trail Rated is a registered trademark of DaimlerChrysler Corporation.

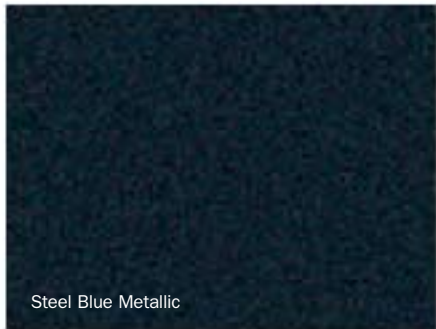
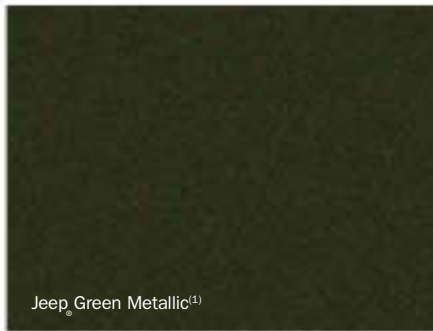
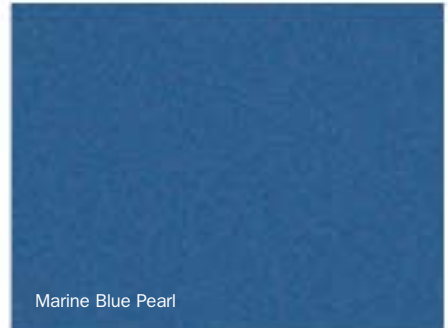


CVT2L TRANSAXLE

The second-generation Continuously Variable Transaxle (CVT2L)* has an effective 19.1:1 overall first gear crawl ratio and is included in the available Trail Rated® Freedom-Drive II™ four-wheel-drive Off Road Group. The CVT2L has an integral low range that provides the torque multiplication needed for water fording, steep grades, and crawling slowly in off-road events. The Trail Rated badge is the outward symbol that testifies to a Jeep vehicle's tested and proven off-road capability.



PATRIOT EXTERIOR COLORS



NOTE: Due to occasional printing irregularities, the colors shown may vary slightly from actual hues. ⁽¹⁾Extra cost.

For more information, please visit www.jeep.com/patriot

Jeep is a registered trademark of DaimlerChrysler Corporation
©1995-2006 DaimlerChrysler. All Rights Reserved. For important information, go to jeep.com/privacy

PATRIOT COLORS AND WHEELS

SPORT



Olympia/Caprice Vinyl-Tech
Pastel Slate Gray/
Dark Slate Gray | Standard



Olympia/Caprice Vinyl-Tech
Pastel Pebble Beige/
Dark Pebble Beige | Standard



Hero/Racine Cloth
with YES Essentials®
Medium Slate Gray | Available



Hero/Racine Cloth
with YES Essentials®
Light Pebble Beige | Available

LIMITED



McKinley Leather Trim/McKinley
Vinyl Pastel Pebble Beige/
Dark Pebble Beige | Standard



McKinley Leather Trim/McKinley
Vinyl Pastel Slate Gray/
Dark Slate Gray | Standard

WHEELS



16-inch Styled Steel | Standard on Sport



17-inch Cast-Aluminum
painted Argent | Available
on Limited and Sport



17-inch Cast-Aluminum
painted Argent | Available
on Limited and Sport

YES Essentials is a registered trademark of Milliken & Company

For more information, please visit www.jeep.com/patriot



PATRIOT SPECIFICATIONS

POWERTRAIN

Engine (Standard)	2.4L DOHC 16V dual VVT I-4
Displacement (cu in/cc)	144/2,360
Horsepower (SAE net @ rpm)	172 @ 6,000
Torque (SAE net @ rpm)	165 @ 4,400
Engine (Available on Sport, 4x2 models only)	2.0L DOHC 16V dual VVT I-4
Displacement (cu in/cc)	122/1,998
Horsepower (SAE net @ rpm)	158 @ 6,400
Torque (SAE net @ rpm)	141 @ 5,000
Fuel System	Sequential multipoint, electronic fuel injection with electronic throttle control
Fuel Recommendation	Unleaded regular, 87 octane (R+M)/2
Transmission	5-speed manual with overdrive, ratio range (:1) 3.77 - 0.81 (1st - 5th) overall top gear ratio: 3.34 _____ Std. Continuously Variable (CVT2) automatic with 30-mm high-strength multilayer steel drive belt, ratio range (:1), 2.35 - 0.39; overall top gear ratio: 2.41 _____ Opt. Continuously Variable (CVT2L) automatic with 30-mm high-strength multilayer steel drive belt, ratio range (:1), 2.35-0.39; overall top gear ratio: 3.21, unique final drive with 19:1 crawl ratio feature _____ Opt. ⁽¹⁾
Engine Construction/Fuel Delivery	High-pressure die-cast aluminum block with dry iron liners, cast-aluminum cylinder head, forged crankshaft, dual counter-rotating balance shafts (2.4L) _____ Std.
Intake Design	Tuned intake manifold with Electronic Active Charge Motion Control valves, 4 valves per cylinder, electronically controlled, dual Variable Valve Timing _____ Std.
Exhaust System	Oversized displacement muffler for reduced backpressure and noise, long-life design _____ Std.
Drive Systems	Front-wheel drive (4x2) transaxle with constant velocity joints and equal-length half shafts _____ Std. Freedom-Drive I™ active, full-time 4-wheel drive (4x4) with selectable 4WD LOCK _____ Opt. Freedom-Drive II™ active, full-time 4x4 with selectable 4WD LOCK with Off-Road mode and 19:1 overall crawl ratio _____ Opt. ⁽¹⁾

ELECTRICAL SYSTEM

Alternator (Std./Avail.)	120A /140A ⁽¹⁾
Battery	525 CCA, maintenance-free

BODY/SUSPENSION/CHASSIS

Body Design	Unitized steel construction with a structural safety cage utilizing advanced hot-stamped, tailor-rolled, dual-phase steel technologies and advanced joint design for added strength, reduced weight and improved NVH
Suspension	Front: Independent with MacPherson strut, and coil springs over gas-charged shocks Rear: Independent multilink with coil springs and gas-charged shocks
Steering	Power-assisted, rack-and-pinion
Overall Ratio	16.4:1
Turning Diameter (curb-to-curb) (ft)	35.6
Turns (lock-to-lock)	2.9
Brake System	ABS, 4-wheel disc hydraulic, power-assisted, 11.5" vented front/10.3" solid rear _____ Std.

⁽¹⁾Available and included only with optional Freedom-Drive II™ Off-Road Group.

Jeep, Trail Rated, Compass, Patriot, Grand Cherokee, Commander, Wrangler, Liberty, Sentry Key, UConnect, Mopar, EVS I, ParkSense, Camp Jeep and the Jeep grille are registered trademarks and Navus, DVD Rear Seat Video, Freedom-Drive I and Freedom-Drive II are trademarks of DaimlerChrysler Corporation. "SIRIUS," the SIRIUS dog logo, and related marks are registered trademarks of SIRIUS Satellite Radio, Inc. Boston Acoustics is a registered trademark of Boston Acoustics, Inc. HomeLink is a registered trademark owned by Johnson Controls, Inc. YES Essentials is a registered trademark of Milliken & Company. UltraFloor is a trademark of Lear Corporation. iPod® and the iPod design are registered trademarks of Apple Computer, Inc. NASCAR is a registered trademark of the National Association for Stock Car Auto Racing, Inc. Bluetooth is a registered trademark of Bluetooth SIG Inc.

For more information, please visit www.jeep.com/patriot

Jeep is a registered trademark of DaimlerChrysler Corporation
©1995-2006 DaimlerChrysler. All Rights Reserved. For important information, go to jeep.com/privacy

Page 6 of 7



PATRIOT SPECIFICATIONS

Electronic Stability Program (ESP)

4-channel, 4-wheel antilock with active wheel speed, vehicle-speed, steering-wheel angle, yaw-rate, and lateral-acceleration sensors, vehicle stability management with two-stage activation switch, all-speed traction control, Brake Assist, Electronic Roll Mitigation and Electronic Brake Distribution (4WD brake traction control and off-road ABS features also included with Freedom-Drive II™ Off-Road Group) _____ Std.

Parking Brake Type _____ Drum-in-hat

CAPACITIES/WEIGHTS/TOWING (4WD) (pounds unless otherwise specified)

Fuel Tank (gal) (4x2/4x4) _____ 13.6/13.5

Base Model Curb Weight

5-speed manual (4x2/4x4) _____ 3,108/3,250

CVT2 (4x2/4x4) _____ 3,186/3,328

Payload Capacity (includes occupants and cargo) _____ 925

Maximum Gross Vehicle Weight Rating _____ 4,575

Maximum Loaded Trailer Weight (when properly equipped) _____ 2,000

Tongue Load Limit (when properly equipped) _____ 225

NOTE: For specific towing details, discuss your plans with your Jeep® dealer who will help you select the right equipment to meet your specifications.

INTERIOR DIMENSIONS (inches unless otherwise specified)

Seating Capacity _____ 5

Head Room front/front with sunroof/rear _____ 41.0/39.6/39.9

Leg Room front/rear _____ 40.6/39.4

Shoulder Room front/rear _____ 54.6/54.0

Hip Room front/rear _____ 52.3/51.0

Cargo Volume rear seat up/folded/rear seatback folded and available front-passenger seatback folded (cu ft) _____ 23.0/54.2/62.7

Cargo Liftover Height _____ 30.7

EXTERIOR DIMENSIONS (inches unless otherwise specified)

Wheelbase _____ 103.7

Overall Length _____ 173.6

Overhang front/rear _____ 34.8/35.1

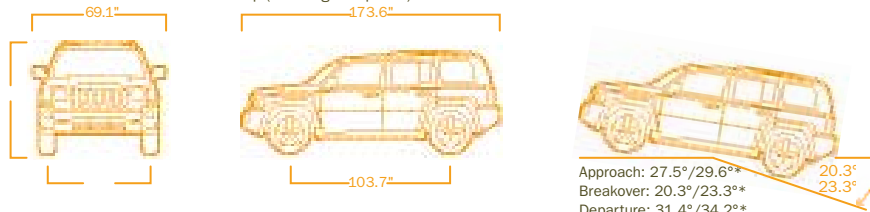
Overall Width (without mirrors) _____ 69.1

Track front/rear _____ 59.8/59.8

Overall Height (with roof rails) _____ 65.7

Running Ground Clearance (at curb weight) _____ 8.0/9.0⁽¹⁾

⁽¹⁾With Freedom-Drive II™ Off-Road Group (including skid plates).



NOTE: Patriot Sport specifications shown above.

*When equipped with Freedom-Drive II™ Off-Road Group. Standard measurements are with P215/60R17 tires.

All product illustrations, specifications and competitive comparisons are based upon current information at the time of publication approval. Although descriptions are believed correct, complete accuracy cannot be guaranteed. DaimlerChrysler reserves the right to make changes at any time, without notice or obligation, in prices, specifications, equipment, colors and materials, and to change or discontinue models. Some of the equipment shown or described throughout this catalog is available at extra cost. Available in U.S. markets only. See your dealer for the latest information.

For more information, please visit www.jeep.com/patriot

Jeep is a registered trademark of DaimlerChrysler Corporation
©1995-2006 DaimlerChrysler. All Rights Reserved. For important information, go to jeep.com/privacy



PATRIOT SPECIFICATIONS

	PATRIOT SPORT		PATRIOT LIMITED
	D	E	F
CAPABILITY			
Brakes — 4-wheel antilock disc	•	•	•
Engine and Axle/Transaxle — 2.4L DOHC 16V dual VVT 4-cylinder with 5-speed manual	25D	25E	25F
— 2.4L DOHC 16-valve dual VVT 4-cylinder with Continuously Variable Transaxle (CVT2)	26D	26E	26F
— 2.4L DOHC 16-valve dual VVT 4-cylinder with Continuously Variable Transaxle and 19:1 overall crawl ratio (CVT2L)	28D	28E	28F
— 2.0L 16-valve dual VVT 4-cylinder with Continuously Variable Transaxle (4x2 only) (n/a with Trailer Tow Prep Group or OWL all-terrain tires)	24D	24E	
Freedom-Drive I™ — Active full-time 4x4 with selectable LOCK feature	0	0	0
Freedom-Drive II™ — Active full-time 4x4 with selectable LOCK feature, Off-Road mode with Hill Descent Control and Grade Sensing (includes CVT2L automatic transaxle in Freedom-Drive II™ Off-Road Group)	0	0	0
Front-Wheel Drive — Front-wheel drive (4x2) transaxle with constant velocity joints and equal-length half shafts.	•	•	•
Speed Control — Steering-wheel-mounted (included with Premium Steering Wheel Group)		P	•
Steering — Power rack-and-pinion	•	•	•
EXTERIOR			
Accents — Body-color grille	•	•	•
— Silver front and rear bumper and body-color bodyside moldings			•
Fog Lamps — 2 halogen, located in front bumper (included with Freedom-Drive II™ Off-Road Group)		O/P	•
Mirrors — Manual, foldaway	•		
— Power, foldaway (included in Power Equipment Group)	P	•	•
Tires — P205/70R16, Goodyear Eagle black sidewall, all-season touring	•	•	
— P215/60R17, Firestone Affinity black sidewall, all-season touring			•
— P215/65R17, Goodyear Wrangler SR-A outline white letter, all-terrain (included in Tire and Wheel Group) (n/a 2.0L engine)	P	P	0
— Spare, full-size (compact spare — standard)	0	0	0
Windows — Manual	•		
— Power with driver's one-touch down (included in Power Equipment Group)	P	•	•
INTERIOR			
Air Conditioning⁽¹⁾ — Manual temperature control	0	•	•
Assist Handles — 4, headliner mounted above doors		•	•
Cargo Area — UltraFloor™ panel, removable and washable	•	•	•
Deep-Tinted Glass — On rear door, cargo area and liftgate windows	0	•	•
Outside Temperature Gauge	•	•	•
Power Sunroof — With express open/close, sunshade and tilt features			0
Seat Coverings — Vinyl-Tech, two-tone	•	•	
— Cloth, with premium YES Essentials® stain resistant, odor resistant, antistatic seat fabric, color-keyed	0	0	
— Leather-trimmed, color-keyed			•
Seats — Driver's seat height adjuster (included with Freedom-Drive II™ Off-Road Group)	P	•	•
— Front, low-back reclining front buckets with 60/40 flat-folding rear seatback	•		

⁽¹⁾There are special cooling requirements for non factory-installed air conditioning. Failure to follow these requirements may invalidate warranty. ⁽²⁾Certified to the Federal Regulations that allow less forceful front air bags. Always use seat belts. Children 12 and under should always be in a backseat correctly using an infant or child restraint system, or with the seat belt positioned correctly for the child's age and weight. ⁽³⁾No system, no matter how sophisticated, can repeal the laws of physics or overcome careless driving actions. Performance is limited by available traction, which snow, ice and other conditions can affect. When the ESP warning lamp in the speedometer flashes, the driver needs to use less throttle and adapt speed and driving behavior to prevailing road conditions. Always drive carefully, consistent with conditions. Always wear your seat belt.

For more information, please visit www.jeep.com/patriot



PATRIOT SPECIFICATIONS

	PATRIOT SPORT		PATRIOT LIMITED
	D	E	F
Seats (cont.)		•	•
— Front low-back reclining with front passenger forward fold-flat seatback, rear reclining 60/40 split-folding rear seatback			
— Heated leather front seats (heated cloth seats on Sport model)		0	•
115-Volt Outlet — To power household items, laptops (150-watt capacity)		•	•
SAFETY AND SECURITY			
Air Bags⁽²⁾ — Advanced multistage front	•	•	•
— Supplemental side-curtain, deploy during a severe-force side impact	•	•	•
— Supplemental front-seat-mounted side (late availability)	0	0	0
Electronic Stability Program (ESP)⁽³⁾ — Includes Electronic Roll Mitigation, Brake Assist and Traction Control	•	•	•
Remote Keyless/Illuminated Entry — (included with Power Equipment Group)	P	•	•
Sentry Key[®] Antitheft Engine Immobilizer — Theft deterrent system with 2 encoded keys	•	•	•
Tire Pressure Monitoring System — Instrument panel warning indicates which tire is low or high in pressure (included with Driver Convenience Group [Limited] and Popular Equipment Group [Sport])		P	P
SOUND SYSTEMS/ENTERTAINMENT			
Radios — AM/FM/CD player with changer controls, and audio input jack for MP3 player and format capabilities	•	•	•
— AM/FM/6-disc CD changer with MP3 format capability	0	0	0
— AM/FM/Navigation/6-disc CD changer with full map GPS display and MP3 format capability			0
— SIRIUS Satellite Radio factory-installed, includes one-year subscription from SIRIUS, 130 channels of music, entertainment, information (n/a Alaska and Hawaii)		0	0
Speakers — 4 speakers	•	•	•
— 9-speaker Premium Sound Group with Boston Acoustics [®] speakers and subwoofer with a 458-watt amplifier, flip-down liftgate speakers	0	0	0
UConnect[®] — Hands-free communications for Bluetooth [®] compatible mobile phones; features: voice dialing, audio address book, call transfer, multiphone recognition, emergency calls (911) and towing assistance			0
PACKAGES			
Driver Convenience Group — Auto-dimming interior rearview mirror, compass, HomeLink [®] , Tire Pressure Monitoring System, Vehicle Information Center, cigar lighter and removable ashtray			0
Freedom-Drive II[™] Off-Road Group — Air filtration system, tow hooks, fuel tank and transmission/oil pan skid plates, fog lamps, a full-size spare, CVT2L with Off-Road mode and Hill Descent Control with Grade Sensing, 140-amp alternator, brake traction control, driver seat height adjuster, engine oil cooler, and upgraded sealing package for water fording up to 19" (must have air conditioning and Tire and Wheel Group)	0	0	0
Popular Equipment Group — Tonneau cover, removable ashtray, auto-dimming interior rearview mirror, compass gauge, cigar lighter and removable ashtray, Vehicle Information Center, daytime running lamps, security alarm, adjustable roof rail cross bars, HomeLink, Tire Pressure Monitoring System		0	
Power Equipment Group — Speed-sensitive power locks, power exterior foldaway mirrors, power windows with driver one-touch and Remote Keyless/Illuminated Entry (requires air conditioning)	0	•	•
Premium Steering Wheel Group — Includes leather wrapped steering wheel with audio and speed controls		0	•
Tire and Wheel Group — Includes P215/65R17 OWL all-terrain tire and aluminum wheels (included in Freedom-Drive II [™] Off-Road Group)	0	0	
Trailer Tow Prep Group — Engine oil cooler and trailer tow wiring harness (n/a 2.0L engine) (engine oil cooler included with Freedom-Drive II [™] Off-Road Group)		0/P	0/P

• = Included P = Available within package noted. 0 = Optional.

For more information, please visit www.jeep.com/patriot