

## DODGE FOR 1983



AMERICA'S DRIVING MACHINES

# ENGINEERING EXCELLENCE.

## AT DODGE DRIVING EXCELLENCE IS ENGINEERED IN.

Design has a lot to do with the sophisticated formula that makes front-wheel drive technology work so well in the 1983 Dodge car lines. Not just make-it-look-nice styling, but aerodynamic styling that uses the flow of the air to hold the car to the road while maximizing engine power and fuel efficiency.

Styling and design, of course, have a lot to do with a car's appeal. However, the appeal of the Dodge series of fine automobiles goes much deeper than surface beauty.

Unitized car bodies are constructed scientifically with the use of highly advanced computer-controlled automated welders for consistent and precise welds that are uniformly made to quality standards.

To help ensure lasting quality and corrosion protection, galvanized sheet metal or zincrometal panels are used extensively in critical areas. A seven-step dip and spray process is used on every body assembly. And cars are checked constantly during assembly to make sure parts fit and systems work.

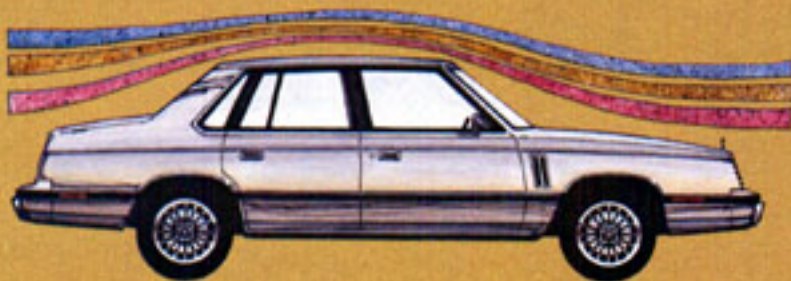
Dodge's power brakes have been improved for 1983 for safe, sure stops. The front disc brakes have larger rotor and caliper assemblies. Rear drum brakes are now self-adjusting.

A new transaxle is available on front-wheel drive models. It has five speeds for better fuel economy and a more precise application of engine power to driving conditions. A fifth overdrive gear helps save fuel on long trips.

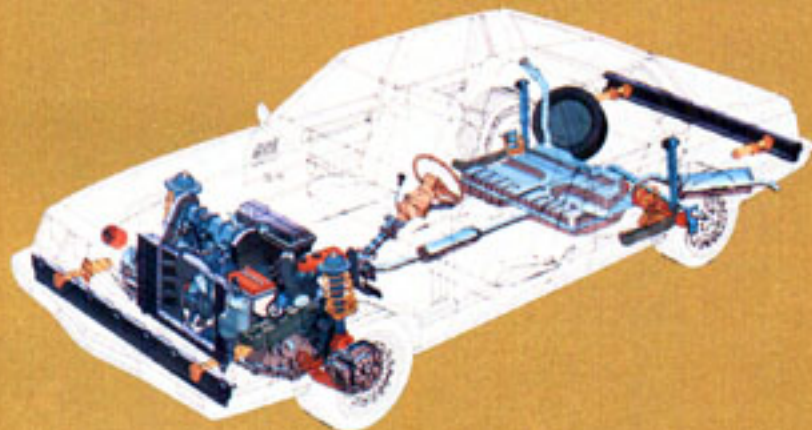
Overall quality is the key ingredient to Dodge's formula for success. In fact, we feel so confident about the quality of Dodge products that upon expiration of the normal 12-month/12,000-mile new vehicle limited warranty, limited warranty coverage is extended on power train components including engine, transaxle/transmission, and axle—plus outer panel rust-through protection—to five years/50,000 miles, whichever comes first. A deductible applies. See your dealer for details.

All product illustrations and specifications are based on authorized information. Although descriptions are believed correct at publication approval, accuracy cannot be guaranteed. Chrysler Corporation reserves the right to make changes from time to time, without notice or obligation, in prices, specifications, colors and materials, and to change or discontinue models. See your dealer for the latest information.

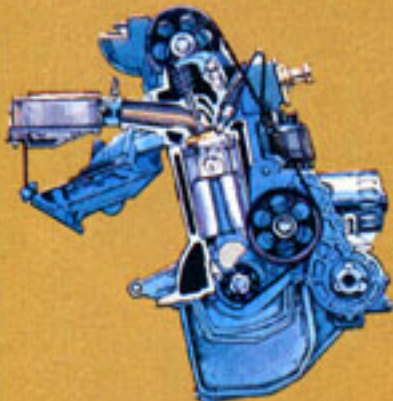
Some of the equipment shown or described throughout this publication is available at extra cost.



Aerodynamic styling results from extensive wind tunnel tests.



Dodge is a leader in front-wheel drive technology experience.



2.2-liter engine is improved in 1983.



Robot welders provide precise welds.

## DODGE 600



Dodge 600 ES shown above in Silver Crystal Coat.



Dodge 600 shown above in Glacier Blue.



Dodge 600 standard interior shown above with Blue cloth-and-vinyl center armrest bench seat.

### THE AMERICAN ROAD BELONGS TO AMERICANS ONCE AGAIN.

The 1983 Dodge 600. America's new front-wheel drive midsize driving machine offers the desirable combination of six-passenger riding comfort, superb styling and outstanding efficiency. It's a new sedan that is as sensible as it is distinctively styled.

Its strikingly handsome body rests on a 103-inch wheelbase to offer excellent overall interior roominess, a spacious rear seat, and a deep 17-cubic-foot trunk capacity.

Dodge 600 is available in the base four-door sedan model or the Dodge 600 ES... a "Euro/Sedan" touring car that makes an unmistakable sporty impression with sleek, bold lines and inviting interior.

One trip behind the wheel of a new Dodge 600 and you'll remember what the pure pleasure of driving is all about. Turn the key in the Dodge 600 ES and the standard Electronic Voice Alert System will politely tell you that all monitored systems are okay. Or it will alert you to ten different conditions that need attention, such as door ajar, parking brake on, and low fuel.



But the real efficiency of the Dodge 600 driving machine is its outstanding fuel economy. With standard 2.2-liter Trans-4 engine and three-speed automatic transaxle, Dodge 600 is rated at <sup>[24]</sup>EPA EST MPG,\* 32 estimated highway. And with its aerodynamic design, Dodge 600 can cruise at 50 miles per hour while using only 14.1 of its total 94 horsepower.

Test-drive a Dodge 600 today.

\*Use EPA EST MPG numbers for comparison. Your mileage may differ depending upon speed, weather and trip length. Actual highway mileage will probably be lower than highway estimate. California mileage <sup>[24]</sup>EPA EST MPG, 32 estimated highway.

## DODGE 400

### OWNING ONE IS LIKE OWNING THE ROAD.

Since its wheels first touched pavement last year, it has been obvious that Dodge 400 is an automobile with a singular purpose ... to rekindle the pure enjoyment of driving.

Chrysler Corporation designers and engineers have long been committed to providing America with highly efficient driving machines. Cars that have been engineered with advanced front-wheel drive technology for an extraordinary combination of precise handling, quick response and remarkable stability. The commitment reached fulfillment in 1982 when Dodge unveiled America's first midsize front-wheel drive car—Dodge 400, America's *personal driving machine*. A fine automobile that made sense and pleased the senses at the same time.



Today Dodge 400 lineup offers a choice of three sporty front-wheel drive models, all designed with a canny awareness of energy economy. An improved 2.2-liter overhead cam four-cylinder engine and new standard five-speed manual transaxle provide more than adequate power with outstanding economy for two-door models ...

[28] EPA EST MPG,\* 44 estimated highway. And with its aerodynamic design, Dodge 400 two-door can cruise at 50 miles per hour while using only 13.5 of its total 94 horsepower.

For 1983, Dodge 400 offers a four-passenger convertible and distinctive two- and four-door models. The Dodge 400 driving experience can be yours today. The selection is superb and the choice is yours. We invite you to make it.

\*Use EPA EST MPG numbers for comparison. Your mileage may differ depending upon speed, weather and trip length. Actual highway mileage will probably be lower than highway estimate. In California:

[26] EPA EST MPG, 41 estimated highway.



Dodge 400 Convertible shown in Pearl White.



Dodge 400 two-door shown in two-tone Glacier Blue Crystal Coat/Nightwatch Blue with Dark Blue landau roof.



Dodge 400 four-door shown in Sable Brown with full Sable Brown vinyl roof.

## DODGE CHARGER AND CHARGER 2.2



Dodge Charger shown in Glacier Blue Crystal Coat/Nightwatch Blue two-tone.



Dodge Charger 2.2 shown in Graphic Red with Black Lower Body Paint Package.



Charger 2.2 standard control center with full instrumentation shown in Black.

### PERFORMANCE DRIVING MACHINES.

No other car in America looks like this one. No other car has its head-turning good looks and an unmistakable zest for challenging the road.

This is a car for people who still love the feel of power underfoot and the excitement of complete control in their hands. With aerodynamics and engineering to meet the demands of the most sophisticated sport car enthusiast. In fact, its aerodynamic design allows Charger with new 1.6-liter engine\* and four-speed manual transaxle to cruise at 50 miles per hour while using only 10.4 of its total 62 horsepower. Dodge offers you two ways to recapture the pure pleasure of driving again.

First, there's the Dodge Charger. From its horizontal grille and tunneled standard halogen headlamps to its standard cloth-and-vinyl high-back bucket seats with dual seatback recliners, and Rallye instrument cluster, Charger is distinctively a Dodge Driving Machine. So much so, that it is rated at 32 EPA EST MPG, † 50 estimated highway...with 1.7-liter engine\* and four-speed manual transaxle.



Then there's the exciting Charger 2.2 with even more performance to go with Charger's sporty style. From simulated hood scoop to a 2.2-liter four-cylinder powerhouse with performance exhaust system to rear spoiler, this driving machine takes off like it turns you on. New front storage and shift lever console, Sport Suspension System, five-speed manual transaxle with performance ratio, and 14-inch Rallye wheels are standard.

\*1.7-liter engine will be standard at introduction. A new 1.6-liter four-cylinder engine will be introduced at midyear.

†Use EPA EST MPG number for comparison. Your mileage may differ depending upon speed, weather and trip length. Actual highway mileage probably will be lower than highway estimate. In California: 32 EPA EST MPG, 53 estimated highway.

## DODGE ARIES

### THE CAR THAT PUT AMERICA BACK ON THE ROAD AGAIN.

Dodge Aries is a proven automotive success that has earned the right to be called "America's Family Driving Machine." With its advanced front-wheel drive technology and roomy six-passenger comfort, Aries is the right car for the times.

The 1983 Aries offers improved performance from the standard 2.2-liter overhead cam engine, a new heater system for improved air distribution, new bright metal accents to further enhance its distinctive styling, standard maintenance-free battery and more.

Aries is a car designed to be driven-enjoyably. From its sophisticated design that allows Aries two-door coupe with 2.2-liter engine to travel at 50 miles per hour while using only 11.9 of its 94 total horsepower to its stable, smooth ride and handling that are a result of the right combination of a well thought out suspension system; sure-tracking rack-and-pinion steering and radial-ply tires. Aries is a road car that also happens to be as efficient as it is sound.

For 1983, Dodge Aries is available in base or S.E. trim in two- and four-door models and in Custom or S.E. wagon models.

The 1983 Dodge Aries S.E. models are excellent examples of how Chrysler Corporation designers constantly refine styling, while engineers take advanced technology a step further by improving performance and fuel efficiency.

All Aries S.E. models feature a plush new standard all-cloth bench seat with fold-down center armrest, handsome and durable carpeted door trim panels with detailed woodgrain inserts, and matching woodgrain instrument panel.

Aries' standard 2.2-liter four-cylinder overhead cam engine, has already earned a reputation for performance and durability. For 1983, horsepower has been increased from 84 to 94 for better acceleration in passing situations. Remarkably, this improved performance comes with excellent fuel economy... Aries two-door and four-door models offer <sup>[29]</sup>EPA EST MPG\* 41 estimated highway.

To understand what it means to drive a practical, durable, roomy car that is long on style and comfort, you really should road-test a 1983 Aries.

\*Use EPA EST MPG number for comparison. Your mileage may differ depending upon speed, weather and trip length. Actual highway mileage probably will be lower than highway estimate. In California: <sup>[28]</sup>EPA EST MPG, 40 estimated highway.



Dodge Aries S.E. two-door sedan shown in Charcoal Gray/Burnished Silver Metallic.



Dodge Aries S.E. wagon in Beige Crystal Coat with woodgrain trim and Aries four-door sedan in Crimson Red.



Dodge Aries S.E. and Custom wagon models featuring a standard cloth-and-vinyl interior shown in Dark/Medium Blue.

## DODGE OMNI



Dodge Omni base model shown in Beige Crystal Coat.



Dodge Omni Custom model shown in Charcoal Gray Metallic.



Dodge Omni base model standard interior shown with Dark Brown and Beige cloth-and-vinyl bucket seats.

### AMERICA'S EFFICIENT DRIVING MACHINE THAT LOOKS GOOD AND COMES ON STRONG.

Here's the car that started it all. The car that established Dodge's reputation for providing this country with driving machines to meet expectations as well as needs.

Dodge Omni meets the need for exceptional fuel economy without sacrificing style, interior roominess, or pleasurable ride and handling.

Omni's standard 1.7-liter four-cylinder engine\* and four-speed manual trans-axle keep you going while others stop at the pump. Omni is rated at <sup>[32]</sup>EPA EST MPG,† 50 estimated highway. In fact, with Omni's aerodynamic design, it can cruise at 50 miles per hour while using only 11.2 of its 1.6-liter engine's\* 62 total horsepower.

Above all, Omni is a lot of car with five-passenger comfort, or 28.7 cubic feet of cargo area with the seat folded down.

For 1983, there are two Dodge Omni driving machines for you to choose from. The base Omni model with new standard value features that challenge anything European or Japanese road cars have to offer... like halogen headlamps, bucket seats with dual recliners, quartz clock, trip odometer and power brakes.

Or there's Dodge Omni Custom, a driving machine that lives up to its name



with standard Custom features for added value and good looks. The 1983 Omni Custom is a lot of car with five-passenger comfort, and 36.6 cubic feet of cargo area with the rear seat folded down.

Take your pick. Then take a 1983 Dodge Omni out on the street or down the open road. A test drive will convince you we're right.

\*1.7-liter engine will be standard at introduction. A new 1.6-liter four-cylinder engine will be introduced at midyear.

†Use EPA EST MPG numbers for comparison. Your mileage may differ depending upon speed, weather and trip length. Actual highway mileage will probably be lower than highway estimate. California mileage: <sup>[32]</sup>EPA EST MPG, 53 estimated highway.

## DODGE MIRADA

### ENGINEERED FOR THE OPEN ROAD, DESIGNED FOR THE OPEN-MINDED.

Here's the expression you've been looking for. Dodge Mirada... a clear statement of your personality.

Mirada's sporty personal size and truly aerodynamic design help it slice through the open spaces with grace and efficiency. Mirada is quality engineered to provide a sure, stable ride and precise handling.

You ease along in endless luxury, too. Interiors are spacious and comfortable with firm spring wire and foam seats. Cut pile carpeting on floors and lower door panels is standard, as are cloth-and-vinyl high-back bucket seats.

Dodge Mirada. It will drive you back to the open road again.



Dodge Mirada shown in Sable Brown with optional CMX Package with Beige cabriolet roof.



Dodge Mirada shown in Crimson Red.



## DODGE DIPLOMAT

### TRADITIONAL STYLING, SOLID ENGINEERING, ESTABLISHED VALUE.

If you're a driver looking for a car of timeless design, proven technology and traditional value; you've just found the Dodge Diplomat.

Diplomat's tasteful exterior is matched by its well-appointed interior. Power steering, power brakes and three-speed TorqueFlite automatic transmission are standard. Step up to Diplomat Medallion and enjoy the added luxury of a 60/40 cloth-and-vinyl seat with center armrest and passenger seatback recliner.

Dodge Diplomat presents a very handsome package for the discerning buyer. The cost is reasonable, the performance reliable, and the ride superb. You would do well to consider the Dodge Diplomat.



Dodge Diplomat Salon shown in Beige Crystal Coat.



**COLT**

Colt Custom five-door shown in Silver Metallic.



Colt Custom RS three-door shown in Black with Bright Red stripe theme.



Challenger "Technica" shown in Black and Silver.

## IMPORTED FOR DODGE...

### FUN AND FANCY-FREE.

This is the car with fun-to-drive value, efficiency, and a lot of spirit to spare. This is the front-wheel drive Dodge Colt from the Master Car Builders of Japan—Mitsubishi Motors Corporation.

For 1983, you'll discover that Colt's proven value never looked so good. There's a Colt three-door hatchback model that is available in base, Deluxe or Custom trim, plus a distinctively sporty RS Package offered with the Custom version. Then there are Colt five-door hatchback models offered in a choice of base or Custom trim, plus the added luxury of an LS Package available with the Custom.

Anyway you choose to go, you'll go with flair. And you keep going, too. Colt three-door hatchback with standard 1.4-liter engine and four-speed manual transaxle is rated at **39** EPA EST MPG,\* 53 estimated highway.

\*Use EPA EST MPG numbers for comparison. Your mileage may differ depending upon speed, weather and trip length. Actual highway mileage will probably be lower than highway estimate. California mileage: **38** EPA EST MPG, 51 estimated highway.

## CHALLENGER IMPORTED FOR DODGE...

### STRAP IN AND TAKE OFF.

The very nature of the exciting 1983 Challenger tells you this car was meant to be "piloted" rather than merely driven. Imported for Dodge from Mitsubishi Motors Corporation, the Master Car Builders of Japan, Challenger is a high-tech road machine that astounds the senses with features many other cars do not have.

Challenger's interior seems more like a cockpit with the futuristic design of its overhead light console, new optional "Technica" Package with special exterior trim and an illuminated instrument cluster that's right out of the space age, five-speed overdrive manual transmission, power remote control mirrors, AM/FM stereo radio, and high performance 2.6-liter 4-cylinder Silent Shaft MCA-JET engine.

The 1983 Challenger. It's difficult enough to take your eyes off it, but now comes the real challenge: try to tear yourself away from it after you've been at the controls.



## DODGE RAMPAGE

### PERSONAL-SIZE TOUGHNESS IS HERE TO TAKE YOU AWAY.

If you're into what Dodge calls personal-size trucking, you can't ignore the Dodge Rampage and Rampage 2.2. They're tough enough to be a truck, sporty enough to be a lot of fun. And the Dodge Rampage 2.2 with 2.2-liter engine and five-speed overdrive manual transaxle is rated at [28] EPA EST MPG,\* 47 estimated highway.

A glance out back tells you it's a tough truck, too. One capable of carrying a hefty workload or funload. Up to 1,100 pounds, in fact. And a peek inside reveals a rich-looking bucket seat interior for your riding comfort. Just what the personal-size trucking enthusiast would design for himself.

For toughness, lots of class and style, and power-oriented performance, you'll get carried away with the Ram Tough Rampage or Rampage 2.2.

\*Use EPA EST MPG number for comparison. Your mileage may differ depending upon speed, weather and trip length. Actual highway mileage will probably be lower than highway estimate. California mileage: [27] EPA EST MPG, 45 estimated highway.

## DODGE RAMCHARGER

### THE COMPLETE SPORT UTILITY AND IT'S DODGE RAM TOUGH.

If you haven't seen the 1983 Dodge Ramcharger up close, you're in for a pleasant surprise. You'll find fresh and innovative styling like no other full-size sport utility vehicle. Ramcharger's front-end treatment is as rugged and tough as it appears. And the one-piece steel roof combined with wrapover rear quarter windows is the latest in engineering design.

But for all its beauty, convenience and comfort; Ramcharger is built to be driven—and driven hard. It's available in two-wheel drive or four-wheel drive models with an accumulation of over 49 years of four-wheel drive experience.

One more thing, Dodge doesn't skimp on anything in its quest to give you a complete, high-quality sport utility machine. Your Ram Tough Dodge dealer has full details. Check it out. Then check Ramcharger out in a test drive and see what real freedom is all about.



Dodge Rampage 2.2 with optional two-tone paint treatment in Silver Crystal Coat and Flat Black. Tonneau cover is optional.



Rampage 2.2 standard cloth and vinyl high-back bucket seats, shown in Red and Black.



Ramcharger deluxe vinyl high-back bucket seats, shown in Red with optional Royal S.E. Trim.



Dodge Ramcharger shown with optional two-tone paint treatment in Charcoal Gray Metallic and Burnished Silver Metallic.

## RAM TOUGH DODGE PICKUPS



Ram Tough Dodge D150 131-inch wheelbase pickup shown with optional two-tone paint treatment in Nightwatch Blue and Light Blue Metallic.



Ram Tough Dodge W150 shown in Graphic Red with Gold stripe.



Dodge Power Ram 50 Custom shown in Bright Red and Dodge Power Ram 50 Sport shown in Polar White.

### MUSCLE TRUCKS WITH BODIES BEAUTIFUL.

Dodge offers a wide variety of tough pickup trucks to meet a wide variety of work needs... and a wide variety of personal tastes. Never before has Dodge offered more value, dependability and style in its pickups.

Dodge Ram Tough pickup selection for 1983 includes two-wheel drive, four-wheel drive, Conventional Cab or Crew Cab models. Start with the Dodge D150 pickup. It offers a full measure of full-size payload, room for three passengers, and excellent handling characteristics. It's available in Custom, Royal and Royal S.E. trim levels. And the best pickup value for 1983... the Ram Tough Miser pickup—loaded with outstanding standard features and sporting a low price.

For heavier payloads, there are D250 and D350 pickups with capacities of up to 5,690 pounds. For off-road use, there are W150, W250, and W350 four-wheel drive models. Then, add to Dodge's versatility the availability of Conventional or Crew Cab models, Sweptline and Utiline bodies, Stake bodies, Dump trucks, Kory Van body, the Retriever Wrecker Package, Trailer-Towing Preparation Package, Sno-Commander Package; and you can begin to understand how we can say that Ram Tough Dodge pickups offer more value, dependability and models than ever before.

See your Ram Tough Dodge dealer for full details.

## DODGE RAM 50 POWER RAM 50

### TAKE A LOAD OFF YOUR MIND, NOT OUT OF YOUR POCKET.

The Dodge Ram 50 and the four-wheel drive Dodge Power Ram 50 are engineered by Mitsubishi Motors Corporation to Dodge quality standards. They're among the most technically advanced vehicles available anywhere. And they're tough workers. You can haul up to a 1,630-pound payload in a Ram 50.

Ask your Dodge Truck dealer about the Ram 50 and Power Ram 50 models available. Like the Ram Tough full-size Dodge pickups, the Ram 50 and Power Ram 50 models can give you as much comfort, convenience and style that you want. And for 1983, there is even a new Turbo Diesel engine available. Your Dodge dealer thinks he has the finest lineup of small trucks anywhere.

# DODGE WAGONS

## THE IDEA IS TO CARRY PEOPLE COMFORTABLY.

You can make a lot of people happy when you take them for a ride in a 1983 Dodge Ram wagon. They'll be pleased no matter which of the three Ram wagon models you take them in: from the 109.6-inch wheelbase Mini Ram... all the way up to the big 127.6-inch wheelbase Maxiwagon. Each offers ride, room and comfort that will turn on the smiles.

The standard seating arrangement is for five, but you can elect to have eight-, twelve-, or fifteen-passenger seating depending upon the model and wheelbase you choose. All three-passenger rear seats feature a quick release anchor fitting, so seats can be easily and quickly removed to allow for an extra-large cargo area when needed.

Quality is reflected in Dodge wagon's styling. Handsome, sleek interiors... a wide selection of side and rear doors... plush deep-foam padded seats, and a long list of standard features.

So, if you want to haul people, haul trailers, or haul cargo; Dodge has a new 1983 Ram wagon that's just right for you. See your Dodge Truck dealer for complete details.

## DODGE RAM VANS

### BUILT RAM TOUGH TO STAY WORK TOUGH.

Whatever your job, Dodge can help make it easier, because Dodge offers a generous choice of models, payloads and equipment. There are three basic models to choose from: the B150, B250 and B350. They offer a choice of a 109.6- or 127.6-inch wheelbase... plus a wide variety of payload capacities.

And no matter which you select you know that you're getting a van that's tough and dependable, yet able to deliver a full measure of comfort and convenience. We call them Ram Tough.

Ram Tough means big features such as extensive use of galvanized steel in critical areas to protect against corrosion. It means a big choice of side and rear door combinations. And it means Ram Tough workability... like the Ram Maxivan, America's roomiest\* van with 296.9 cubic feet of cargo area. For work or play you'll find that Dodge has a van that's just right for you.

\*Based on cubic capacity calculated by SAE standard HSJ1100a.



A PRODUCT OF  
THE NEW CHRYSLER  
CORPORATION



Dodge Ram B150 Wagon shown in Beige Sand and Sable Brown.



Dodge B150 Ram Van shown in Graphic Red.



Dodge Wagon's optional Travel Seating Package.



Dodge vans are ready for custom conversion work.