

1979 FORD

PINTO

New design for a complete small car!



'79 FORD PINTO

Variety that is the spice of life!

Introducing the Ford Pinto family for 1979. Which introduces a new design for a complete small car. In a variety of 2-door, 3-door and wagon choices to fit nearly every driving and life style. With a price to fit nearly every budget. And a healthy list of standard equipment. And great new styling refinements from stem to stern. To learn more about the particular

member of the new Ford Pinto family that may be just right for you . . . read on. **Pinto's Far Out Front For '79.** The '79 Pinto has an exciting bold, new look. Both inside and out. Check out Pinto's striking new front grille with integral parking lamps. Its mod-looking single rectangular headlamps. And the stylish new hood and fenders, plus the new front bumper with black end sections. Pinto also has a new rear bumper, and the sedans have new futuristic taillights. Inside, there's a

fashionable new instrument cluster. Also for '79, Pinto offers two new option packages. The Pinto ESS option, shown on page 4. Plus the Pinto Runabout with a Cruising Package option, shown on page 6.

Judge It By Its Great Standards!

Pinto offers great standard features. For '79, even the standard Pinto 2-Door Sedan has bright window surround moldings, electric rear window defroster, AM radio,* tinted glass all around, vinyl insert bodyside moldings, and stylish new

full wheel covers, Deluxe Bumper Group . . . all standard. And there's much more. See the back cover for a complete listing. Then compare. Judging by what you find, you should be sold on the '79 Pinto.

Pinto's The Course To Take If You're Familiar With Basic Economics.

Pinto's standard 2.3 litre overhead cam engine and 4-speed manual transmission provide acceleration when it's really needed. And be sure to take note of Pinto's gas mileage. Both city and highway.** Then note that scheduled

maintenance has been substantially reduced over the past six years. Pinto can go 10,000 miles or 12 months between scheduled oil changes and 30,000 miles between tubes. (See back cover for full details.) And Pinto's DuraSpark Ignition System eliminates points. Last, but not least, get Pinto's most attractive price, keeping in mind all that's standard. We think you'll agree . . . Pinto gives you a lot for your money.

Pinto's Appeal Is Far Reaching! The main reasons why people of all ages

are coming to Pinto are most likely Pinto's reputation, looks and true value. But there are other reasons. Women should enjoy Pinto's rack and pinion steering and short wheelbase which help provide easy maneuverability, plus the many options designed with them in mind. Families really go for Pinto's roominess, which must be experienced to be truly appreciated.

Best of all, there's such a wide variety of choices, so there should be one just right for you. Pinto Pony 2-Door Sedan, 2-Door

Sedan, ESS option on both 2- and 3-doors, 3-Door Runabout, Runabout with Cruising Package option, Wagon, Squire Wagon option, And Wagon with Cruising Package option.

So take a test drive today. Check out the wide variety of Pintos. See why we think Pinto is your logical choice.

Front Cover: Pinto 2-Door Sedan in Bright Red (2R).

Below: Pinto Pony in Bright Red (2R), Pinto Squire Wagon in White (9D), Pinto ESS in Silver Metallic (1G), Pinto 3-Door Runabout in Yellow (4E) and Pinto Wagon with Cruising Package in White (5D).

Note: See Notable Standard Features, Measurements and color code reference on the back cover.

Some items shown are optional. See options list on pages 14, 15.

*May be deleted for credit or upgraded at additional cost.

**At the time this catalog was published, 1979 EPA estimates were unavailable. However, we believe Pinto, as in 1978, will post good miles-per-gallon ratings. For the latest information, consult your Ford Dealer.





(A) Pinto ESS 3-Door



(B)



(D) Pinto 3-Door Runabout with Tu-Tone paint treatment



(C)

Two Excitingly Colorful Ways To Go!

A stylish blend of two continents! Introducing Pinto ESS. This exciting option gives you a Pinto that's styled in the tradition of a European sports sedan. But with a great deal of American ingenuity added to it. Savor the sleek lines. Check the styling grace that extends from the

roof to the styled steel wheels and encompasses everything in between. You'll see that the ESS could easily stand for exceptionally styled sedan. Available on the 2-Door Sedan and the 3-Door Runabout, the ESS option features all the following: Blackout paint on the roof drip molding, lower back panel and rocker panel. Black tape along lower window ledge. Black

windshield moldings, door frames and quarter window upper frame. All-glass third door (3-door) with Black hinges. Black dual sport mirrors. Charcoal-colored grille and headlamp doors. Premium Black bodyside molding. ESS nomenclature. Black wheel lip moldings. Styled steel wheels with trim rings. Sports Package which includes: front stabilizer bar, optional axle ratio

with 2.3 litre engine and 4-speed manual transmission, Sport steering wheel and instrumentation cluster (with tachometer, ammeter and temperature gauges). And the Pinto ESS has a standard 2.3 litre overhead cam 4-cylinder engine and 4-speed manual transmission. For those who desire a bigger engine, an optional 2.8 litre overhead valve V-6 is available.

(A) Pinto ESS 3-Door. Shown in Silver Metallic (1G), the ESS has a touch of sporty flair, a good measure of elegance, plus it's so much fun to get around in.

(B) New bright grille. The new front grille really projects Pinto's overall bold look. The singular rectangular headlamps are ultra-modern and apply the finishing touches to Pinto's progressive appearance

up front.

(C) 3-Door Runabout standard third door. A metal framed door allows easy access to Pinto's roomy cargo carrying area, which measures an impressive 29.0 cubic feet with rear seat folded down.

(D) Pinto 3-Door Runabout with Tu-Tone paint treatment. This standout color combination is shown in Light Chamois

(83), with the lower Tu-Tone in Medium Chestnut Metallic (5M). Shown with optional all-glass third door (which greatly enhances the looks of the Runabout), dual sport mirrors and wire wheel covers to name a few of the many option choices.

Note: See Notable Standard Features, Measurements and color code reference on the back cover. Some items shown are optional. See options list on pages 14, 15.

FORD PINTO
3-DOOR/WAGON



(A) Pinto 3-Door Runabout with Cruising Package and flip-up open air roof



(C) Pinto Wagon with Cruising Package



(D) Pinto 3-Door Runabout with accent tape stripe and flip-up open air roof

For Those Carefree Times!

Pinto offers a super one-two combination to make these carefree good times great times and getting around half the fun. Introducing the Pinto Runabout with optional new Cruising Package. Unmistakably bold. Bringing lots of flair to a sedan. Then there's the '79 Pinto Wagon with optional Cruising Package which looks more striking than ever before. Both of these options include: Blackout treatment on door frames, center pillar and

windshield molding. Black dual sport mirrors. Charcoal-colored grille and headlamp doors. Blackout treatment on windshield moldings. White-painted styled steel wheels with trim rings (4). Load floor carpeting. Sports Package which includes: front stabilizer bar (standard on Squire Wagon), optional axle ratio (3-Door Runabout only, with the 2.3 litre engine and 4-speed manual transmission), Sport steering wheel and instrumentation cluster (with tachometer, ammeter and

temperature gauges). The 3-Door Runabout with the Cruising Package also includes: all-glass third door. Multicolor paint/tape treatment on the lower bodyside. And the Pinto Wagon with the Cruising Package also has blackout treatment on the forward portion of the upper quarter panel, rocker panel, backlight moldings. Inner and outer filler panels with portholes. Multicolor paint/tape treatment on the bodyside quarter panel and liftgate.

Black liftgate louvers. Carpeting on inner quarter walls. And both the 3-Door Runabout and the Pinto Wagon have a 2.3 litre overhead cam 4-cylinder engine and a 4-speed manual transmission standard.

(A) Pinto 3-Door Runabout with Cruising Package. Shown in Polar White (9D) with the paint/tape treatment in Yellow, Orange, Coral, Red and Dark Red. Also in Silver Metallic, Bright Red, Yellow



and Tangerine. There's also a flip-up roof. See page 9.

(B) Cargo area of the Pinto Wagon with Cruising Package. With the rear seat folded down, the Pinto Wagon provides 57.2 cubic feet of cargo area. That's ample room for carrying luggage and sporting gear. There's also smart-looking color-keyed load floor and side carpeting.

(C) Pinto Wagon with Cruising Package. It's really distinctive and fun to drive. It has all the storage space of a wagon, plus

features like stylish bubble-glass portholes in the upper quarter panels and sharp Black liftgate louvers. See the preceding page for a complete list of features. Shown in White (9D) with Yellow, Orange, Coral, Red and Dark Red paint/tape treatment. See page 11 for Cruising Package without graphics.

(D) Pinto 3-Door Runabout with accent tape stripe. Shown in Bright Blue (3J) with a White accent stripe which adds a sporty finishing touch. Runabouts and

wagons feature an easy to fold down rear seat for roomy cargo-carrying capacities. The third door opens wide for easy loading and unloading.

Note: See Notable Standard Features, Measurements and color code reference on the back cover.

Some items shown are optional. See options list on pages 14, 15.

FORD PINTO
2-DOOR SEDAN



(A) Pinto 2-Door Sedan with Exterior Decor Group

The Makings Of A Winner!

It takes a lot to be a winner. Outstanding credentials when it really counts. And here's where the 2-Door Sedan, like all Pintos, really excels.

Like all Pintos, the Pinto 2-Door Sedan offers a peppy 2.3 litre overhead cam 4-cylinder engine standard. (This is the one that was put to the test at Indy.) Should you prefer, a larger optional 2.8

litre* overhead valve V-6 is available.

In addition to the many great standard features noted on page 2, the 2-Door Sedan's credentials continue with a standard 4-speed manual transmission. A 3-speed SelectShift transmission is optional. Its T-bar shift lever is floor-mounted and can be shifted manually when you wish. And Pinto looks like an expensive car, yet it's quite thrifty.**

Plus Pinto's 94.5-in. wheelbase helps make it easy to maneuver. Around curves. Around corners. And around town, even in the tightest spots. Other contributing factors are its rack and pinion steering and 30.7 ft. turning diameter (curb-to-curb).

And the 2-Door Sedan has color-keyed carpeting and color-keyed instrument panel, steering wheel and column. DirectAire ventilation, front disc brakes

and much more, all standard. See the back cover for a complete listing.

It was at Indianapolis that the '78 Pinto got a chance to put its credentials on the line. To show its acceleration and passing capabilities, Pinto challenged two of its leading competitors . . . Datsun B-210 and Toyota Corolla. Two tests were conducted by USAC. The first was a Highway Entrance Test. Each car

accelerated from a standing start to 55 mph (highway merging speed). Pinto won.

The second was a Truck Passing Test. Each car accelerated starting at 20 mph as it passed a truck and returned to its original traffic lane. Pinto won once again. The '79 Pinto, with a more stylish new look and the makings of a winner, invites the competition to a rematch at Indy. Show you've got the makings of a winner



(B) Pinto Pony 2-Door Sedan



(C)



and make Pinto your next car.

(A) Pinto 2-Door Sedan with Exterior Decor Group. Shown in Bright Red (2R). The optional Exterior Decor Group will brighten your travels with: rocker panel and wide wheel lip moldings, bright headlamp doors, bright grille, bodyside and lower back panel accent paint stripes (2-Door, 3-Door and Wagon).

(B) Pinto Pony 2-Door Sedan. Shown in Bright Yellow (64). While Pony is our lowest sticker priced model, you wouldn't guess it when you see all that's standard. See the back cover for a complete listing, we think you'll be pleasantly surprised.

(C) Flip-up open air roof. The smoke-tinted glass panel opens to a vent position, or removes completely. Also has a durable storage bag and removable sun shade.

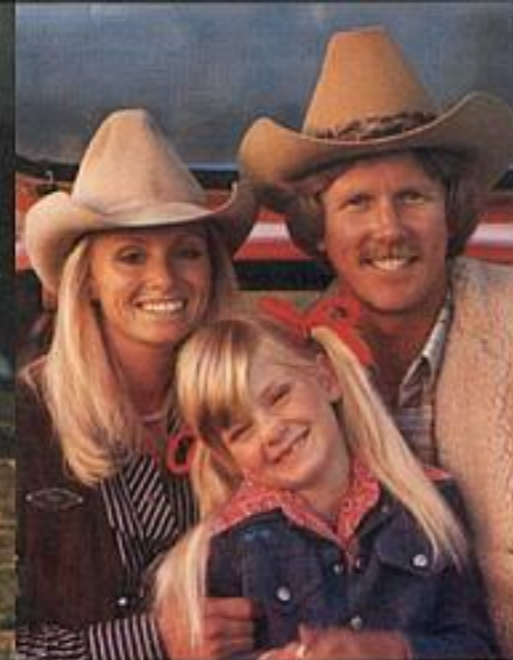
Note: See Notable Standard Features, Measurements and color code reference on the back cover. Some items shown are optional. See options list on pages 14, 15.

*Variable venturi carburetor in California.

**At the time this catalog was published, 1979 EPA estimates were unavailable. However, we believe Pinto, as in 1978, will post good miles-per-gallon ratings. For the latest information, consult your Ford Dealer.



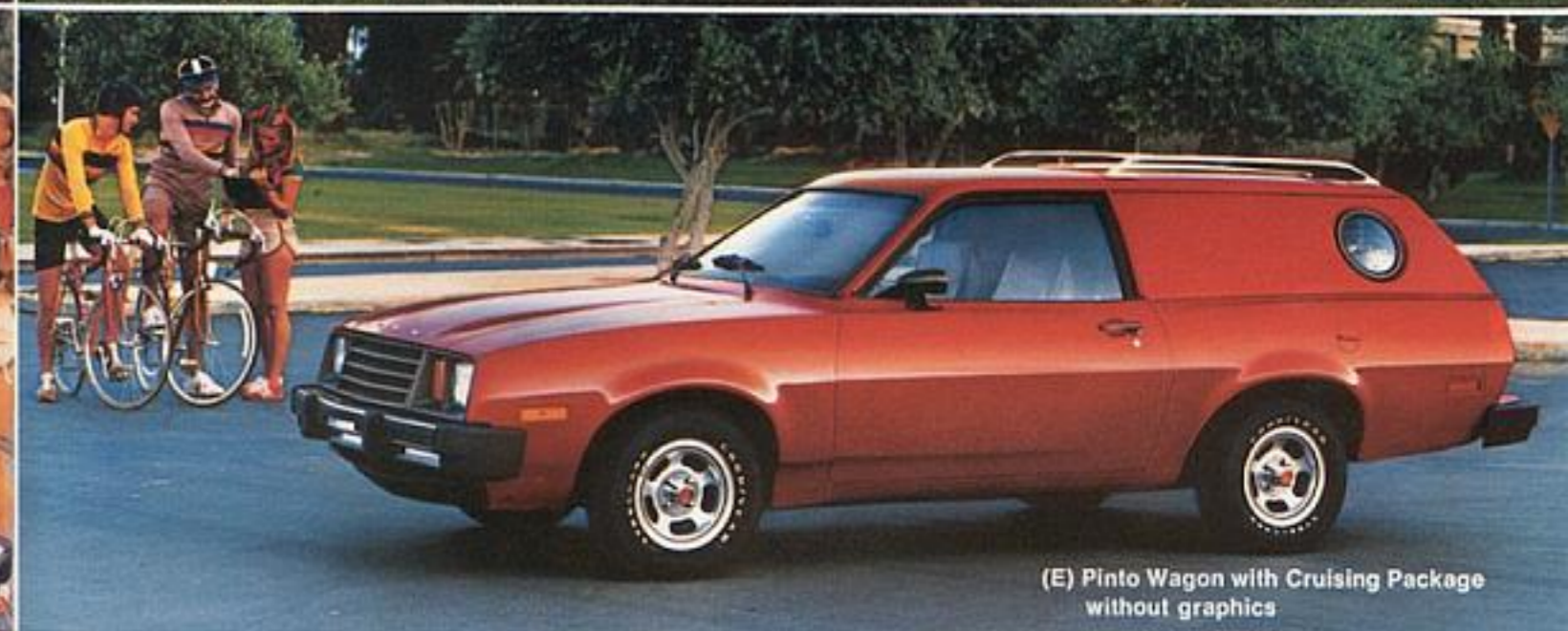
(A) Pinto Squire Wagon



(B)



(D) Pinto Wagon with Exterior Decor Group



(E) Pinto Wagon with Cruising Package without graphics



(C)

Pinto Wagons Are Born To Roam!

The stylish '79 Pinto Wagon from Ford the Wagonmaster continues to deliver when and where it counts. It's got roominess. Enough to accommodate four adults, plus 31.3 cu. ft. of cargo, with the rear seat up. Or two adults and 57.2 cu. ft. of cargo with the rear seat folded down. This makes it great for wandering close to home or getting away for those special weekends.

It's got a 2.3 litre overhead cam 4-cylinder engine and a 4-speed manual transmission which provides acceleration when it's needed. Then there's Pinto's rack and pinion steering and a 94.8-inch wheelbase so it can handle with ease, even in the tightest spots. Plus Pinto's most impressive list of standard equipment that makes it an outstanding value. And remember that it's got a classier new look. More reasons to make Pinto Wagon even

more popular. Not to mention the many option and color choices. You should find there's one just right for you. After all, weren't you born to roam too?

(A) Pinto Squire Wagon. This highly attractive option features: Interior Decor Group (see pages 12, 13) for additional comfort and convenience inside, plus woodtone vinyl bodyside and liftgate paneling, woodtone surround rails, bright

grille and headlamp doors, Brown body-side molding, and rear "Squire" script to provide a real touch of class to the outside. Shown in Tangerine (85) with deluxe luggage rack for even greater carrying capabilities.

(B) Black liftgate louvers. Really add highlight, plus they help shield the sun. Part of the Pinto Wagon with Cruising Package option.

(C) Loads of space. Pinto Wagons really haul. They have over five feet of flat floorspace, with the rear seat down, to accommodate many of the things you wish to carry.

(D) Pinto Wagon with Exterior Decor Group. Shown in Medium Blue Glow (3H), this wagon gives you real transportation value, ample cargo capacity and down-

right good looks. And, as with all Pinto Wagons, the counterbalanced liftgate opens clear to the bumper (load floor level) to make loading and unloading easy. The optional Exterior Decor Group adds a crowning touch to the wagon's smart appearance. See pages 14, 15.

(E) Pinto Wagon with Cruising Package. Shown in Bright Red (2P), this paint

radiates a really bold look to let you "go your own way." Available in four additional colors. See page 7 for Wagon Cruising Package with graphics.

Note: See Notable Standard Features, Measurements and color code reference on the back cover. Some items shown are optional. See options list on pages 14, 15.



(A)



(B)



(C)

FORD PINTO INTERIORS

Combining comfort with style!

For '79, Pinto's emphasis is on your comfort with style. Comfort is standard. And not at the expense of style. One quick glance assures you Pinto interiors are lookin' good.

Sit inside Pinto. Get the feel of the contoured bucket seats up front. You'll

choice with the Interior Decor Group.

And don't forget all the great comfort and style features Pinto continues to offer standard. Four-passenger comfort, color-keyed carpeting for that finished look, a DirectAire ventilation system, and continuous loop seat belt harnesses that swing out of the way for easy rear seat entry and exit. Plus all Pintos (except Pony) have tinted glass all around, electric rear window defroster and Deluxe Bumper Group standard,* too.

inside rearview mirror, passenger-door courtesy light switch, deluxe door trim, rear seat ashtray, deluxe Sound Insulation Package, cigarette lighter, color-keyed parking brake boot and load floor carpeting (3-Door and Wagon). Standard on the Squire Wagon.

(B) New '79 Instrument cluster. Features new large, rectangular pods to highlight the speedometer, odometer, warning lights and gas gauge. So stylish, plus they're highly visible and easy to read. There's also

(E) Wicker weave pattern—all vinyl. This smart-looking vinyl with high back bucket seats is so easy to keep clean and spotless. A no-cost option. Shown in Red (AD).

(F) 3-Door Runabout cargo space. With its rear seat folded down, which you can easily do with one hand, the Runabout offers the convenience of a full 29.0 cu. ft. of cargo carrying space. That's ample room for skis, golf clubs, camping or fishing gear, etc., which makes getting



(D)



(E)



(F)



(G)

feel right at home. Just as your passengers will in the bucket-style rear seats.

And Pinto gives you such a wide variety of interior selections. Choose low-back bucket seats in a sporty plaid. High-back buckets in a distinctive striped pattern. And there are low-back bucket seats in luxury vinyl or high-back buckets in standard vinyl. Plus all interior choices are available in Black, Red, Wedgewood Blue, and Chamois. Tangerine is an additional

(A) Interior Decor Group—luxury cloth/vinyl. This sporty Scottish plaid demonstrates your distinct style. Pictured in Chamois (DT), with low-back bucket seats, it is also available in Red, Wedgewood Blue and Tangerine.

The optional Interior Decor Group also includes: deluxe steering wheel, woodtone appliques on the instrument panel, shift knob area and parking brake handle, color-keyed deluxe seat belts, day/night

a sportier looking dash.

(C) Bucket style rear seats. Afford your passengers the roominess they deserve, to complete Pinto's total comforting story.

(D) Interior Decor Group luxury all-vinyl. This impressive-looking soft vinyl can be selected instead of the preceding cloth/vinyl at no extra cost. These deluxe low-back buckets are shown in Light Wedgewood Blue (HB). Includes all other features listed in (A) above.

away from it all a snap.

(G) Diamond pattern—cloth/vinyl. A decidedly bold look is yours with this eye-catching, striped pattern combination. These high-back buckets are shown in Black (GA). Also available in Red, Wedgewood Blue, and Chamois. Standard on the 2-Door, 3-Door Runabout and Wagon.

Note: Some items shown are optional. See options list on pages 14, 15.
*Standard equipment varies in California. See your Ford Dealer.

FORD PINTO OPTIONS

Add your personal touch.

Audio

Ford offers a superb selection of radios and audio equipment for the Pinto of your choice. All are precision-engineered and built to exacting Ford quality standards. For details, get the booklet "New Dimensions in Sound" at your Ford Dealer's.

- AM with pushbutton tuning and dash-mounted speaker. Pony only.

Ford AM/FM stereo radios, it receives FM multiplex stereo broadcasts. Two door-mounted speakers, plus balance control.

- (B) AM/FM Stereo with Cassette Tape Player. This radio provides great sound reproduction, plus cassettes store so conveniently in the glovebox. Dual speakers.

Appearance

- Pinto Runabout with Cruising Package. See pages 2, 3, 6.
- Pinto Wagon with Cruising Package. See pages 2, 3, 7, 11.

- Tu-Tone Paint Treatment. A most striking way to accentuate your 2- or 3-door Pinto. This lower bodyside treatment is available in a wide range of complementary colors. Page 5.
- Squire Wagon. Pages 2, 10.
- Accent Tape Stripe. Distinctively emphasizes Pinto's stylish lines. Wide Tape Stripes (in four colors) extend along upper fenders to rear quarter and over the roof around rear window on 2-Door (third door

- Available on most models in Medium Blue, and Red Glow.
- (D) 4-Way Manual Driver's Seat. Provides precise comfort. The driver has a choice of settings to accommodate driver's height or position preference. Seat can be adjusted 1½-in. vertically and 5½-in. fore and aft on all Pintos.

Convenience

- (E) Convenience Group. This dandy package has so much that's handy. It includes: pivoting quarter windows (sedans), day/night mirror, visor vanity mirror, color-keyed deluxe

- color-keyed parking brake boot.
- Interior Decor Group. The easiest way to get the most luxurious interior Pinto has to offer. Pages 12, 13.
- (G) Light Group. Includes map light, cargo area light (2-Door, Wagon), 3rd door courtesy light switch (3-Door), lights in the engine compartment, glove box, ashtray and trunk; passenger side courtesy light switch and "headlights on" warning buzzer.
- Luggage Rack. Greatly increases wagon luggage carrying capabilities,

- Performance**
- Axle Ratio. See your dealer for application.
- 2.8 Litre V-6 Engine. (Variable venturi in Calif.) For the person who wants even more performance than the 2.3 litre provides. Lightweight, with mechanical valve train. Front stabilizer bar included.
- (H) Sports Package. Lets you really take command. Part of Cruising Package options described on pages 6, 7.
- (I) SelectShift Automatic Transmission. Can be shifted manually if you wish.

- detering theft. Black vinyl for Runabout.
- Deluxe Bumper Group. Protects against annoying dings and nicks. Includes rear rubber guards plus full-width front and rear rub strips. Front cover through pages 11 all models. Pony only.
- Appearance Protection Group. Protective and stylish, it includes: door edge guards, license plate frames and color-keyed deluxe nylon carpet and floor mats for all Pintos.
- Premium Vinyl Insert Bodyside Mold-

honed by participating Ford Dealers nationwide, is available to provide longer protection than your car's basic warranty against specified major component repairs. Consult your salesman for availability and ask him for full details.

Tires

- Bias ply and steel-belted radial ply tires are available in BSW, WSW or Raised White Letters (RWL). Your Ford Dealer will give you details.

Wheel Covers/Wheels

Pinto wheel covers and wheels come in



- (A) AM/Digital Clock Radio. This convenient combination gives you fine sound on AM broadcasts plus an easy-to-read digital clock. Dash-mounted speaker.
- AM/FM Monaural. Our thriest way to enjoy both AM and FM programming. Dash-mounted speaker.
- AM with Stereo Tape Player. Accepts 8-track cartridges. Has a speaker in each door, plus balance control.
- AM/FM Stereo. Provides automotive sound that's most enjoyable. Like all

- ESS Package. See pages 2, 3, 4.
- Exterior Decor Group. Adds sparkling highlights to Pinto's innate good looks. See pages 8 and 9.
- All-Glass Third Door. It adds a stylish touch. Door opens easily with pneumatic assists. Page 5.
- Load Floor Carpet. Gives a warm, color-coordinated look. For Runabout and wagons. Pages 5, 7.
- Metallic Glow Paint. This high metallic flake content paint gives Pinto's finish a real radiant look.

- opening on Runabout). Page 7.
- Comfort**
- (C) SelectAire Conditioner. Has four adjustable vents and five-position control to cool, dehumidify and warm for your all-season comfort. Tinted glass recommended.
- All-Around Tinted Glass. Reduces heat and glare from the sun. Recommended with air conditioning. Pony only.
- Flip-Up Open Air Roof. For 2- and

- belts, cigarette lighter, rear seat ashtray, interval windshield wipers and glove box light.
- Inside Hood Release. Added convenience.
- (F) Interior Accent Group. The many tasteful appointments of this package include: left-hand color-keyed sport mirror, deluxe steering wheel, wood-tone appliques on the instrument panel, parking brake handle and shift knob; color-keyed deluxe belts, cigarette lighter, day/night inside mirror and

- plus it adds to Pinto's good looks. Pages 2, 3, 10, 11.
- Dual Sport Mirrors. Give a sportier look to all Pintos. Mirrors are color-keyed and operate by remote control. Pages 2, 3, 4, 5, 10, 11.
- Electric Rear Window Defroster. Quickly rids rear window of snow, ice or fog. Pony only.
- Interiors**
- Seats and trims, illustrated and described on pages 12 and 13.

- T-bar shift lever is floor-mounted.
- Power Assists**
- Power Front Disc Brakes. For easier stops and longer brake life.
- Variable Ratio Power Rack and Pinion Steering. Greatly appreciated when parking or in tight traffic. Recommended with 2.8 litre engine or air conditioning.
- Protection**
- Heavy-Duty Battery. 54 amp-hr.
- (J) Cargo Area Cover. Snaps into place to keep contents out of sight, thus

- ings. Smart-looking protection in close parking situations. Pony only.
- Vinyl Insert Bodyside Moldings. Pony only.
- Lower Bodyside Protection (in addition to Ford Corrosion Protection measures noted on the back cover), includes expanded use of vinyl sealer to help provide extra protection against stone-pecking. Especially important when traveling on gravel roads or where use of road salt is heavy.
- (K) The Ford Extended Service Plan, backed by Ford Motor Company and

- a variety of styles. On the pages indicated below you can see how they look on catalog display models.
- Wire Wheel Covers (4). Pages 2, 3, 5.
- Styled Steel Wheels (4), with Trim Rings. Pages 3, 4, 11.
- Forged Aluminum Wheels (4). Project that "in look". On front cover, pages 5, 8.
- White-Painted Forged Aluminum Wheels (4). A standout. Pages 3, 6, 7, 11.
- (L) Lacy Spoke Aluminum Wheels (4). High-performance styling.

Pinto Choices



Pinto Pony 2-Door Sedan
Dark Brown Metallic (5Q)



Pinto 2-Door Sedan
Medium Red Metallic (2H)



Pinto 3-Door Runabout
with Cruising Package*
Yellow (64)



Pinto ESS*
Light Chammois (83)



Pinto Wagon
Dark Jade Metallic (46)



Pinto Squire*
Bright Blue (3J)



Pinto Wagon with
Cruising Package*
Tangerine (65)

Notable Standard Features

PINTO PONY 2-DOOR SEDAN

FUNCTIONAL

- 2.3 litre OHC 4-cylinder engine with DuraSpark Ignition
- Floor-mounted, fully synchronized, 4-speed manual transmission
- Front disc brakes
- Hand-operated parking brake
- Rack and pinion steering
- Aluminum bumpers with black end flaps
- Front bumper guards
- Bias ply 13" BSW tires
- Heavy-duty 45 amp. battery
- Ford Motor Company Lifeguard Design Safety Features

APPEARANCE

- All-vinyl or cloth-and-vinyl high-back front bucket seats
- Color-keyed carpeting
- Black instrument panel, steering wheel and column

- DirectAir ventilation
- Mini-console
- Glove box with door
- Medium argent-colored grille and headlight doors
- Bright windshield and rear window moldings
- Rectangular headlamps
- Full wheel covers (4)
- Bright drip moldings
- Pony decal

PINTO 2-DOOR SEDAN

- Most of the Pinto Pony features with these additions or variations:**
- AM radio (may be deleted for credit or upgraded at extra cost)
 - Electric rear window defroster
 - Tinted glass all-around
 - Color-keyed instrument panel, steering wheel and column
 - Bright windshield, bright side and rear window, drip, pillar and belt moldings
 - Vinyl insert bodyside moldings

- Deluxe Bumper Group

PINTO 3-DOOR RUNABOUT

- All of the Pinto 3-Door Runabout features, with these additions or variations:**
- Fold-down rear seat with one-hand latch
 - Load floor rubber mat
 - Third door with metal-framed glass and gas-filled strut assist

PINTO WAGON

- All of the Pinto 3-Door Runabout features, with these additions or variations:**
- Counterbalanced, full-length liftgate with fixed window
 - Liftgate "open" warning light
 - Pivoting quarter windows
 - Front stabilizer bar
- *For content of optional packages, see pages 4, 6, 7 and 10.
Options list is shown on pages 14, 15.
**Standard equipment varies in California. See your Ford Dealer.

Measurements

	Wheel-base	Length	Height	Width	Front Tread	Rear Tread	Usable Luggage Capacity	Fuel Capacity	Curb Weight	Passenger Capacity
SEDAN	94.5"	168.8"	50.6"	69.4"	55"	55.8"	8.2 cu. ft.	13 gal.**	2,449 lbs.	4
RUNABOUT	94.5"	168.8"	50.6"	69.4"	55"	55.8"	29.0 cu. ft.*	13 gal.**	2,495 lbs.	4
WAGON	94.8"	178.6"	52.1"	69.7"	55"	55.8"	57.2 cu. ft.*	14 gal.	2,641 lbs.	4

*Cargo Volume Index—with rear seat folded down.

**11.7 on sedans with 2.3 litre engine and automatic transmission in California.

Notes

CORROSION PROTECTION. Ford takes steps to see that your new Pinto is engineered and built to high quality standards. And in order to help keep your Pinto looking new, we incorporate the use of pre-coated steels, such as galvanized steel and chromium/zinc rich primer coated steel, vinyl sealers, aluminized wax in critical areas, and enamel as a finishing coat.

REDUCED SCHEDULED MAINTENANCE. As a part of a continuing program to lower the cost of ownership, scheduled maintenance requirements on most new Fords have been reduced dramatically in

recent years. For example, with the 1979 Ford Pinto, the recommended maintenance schedule is 10,000 miles or 12 months between scheduled oil changes and 30,000 miles between lubes. These are just two small parts of the comprehensive program, which, in total, can significantly lower the cost of scheduled maintenance for Pinto over 50,000 miles of driving.

COLOR AND TRIM CODES. Car colors and trims are coded, example: Tangerine (85). Your Ford Dealer will be pleased to show you color samples of paint and trim materials.

OPTION AVAILABILITY. Some features presented are optional at extra cost. Some options are required in combination with other options. Availability of some models and features described may be subject to a slight delay. Ask your Ford Dealer for the latest information on options, prices and availability.

PRODUCT CHANGES. Ford Division reserves the right to change specifications any time without incurring obligations.

REPLACING PARTS. Be sure to specify genuine Ford-approved parts, Motorcraft parts and Autolite Spark Plugs from your Ford Dealer.

FORD PINTO

FORD DIVISION

