

Plymouth Belvedere



THE ROARING '65s / FURY / BELVEDERE / VALIANT / BARRACUDA *Plymouth*

THEY'VE DONE IT AGAIN THIS YEAR

Do you get the feeling, every year when you look at the new model cars, that "they" can't possibly improve on them for next year?

Well — "they" have done it again! You're in for a real surprise when you see Plymouth's 1965 Belvedere line: Satellite, Belvedere II and Belvedere I. Everything Plymouth was for '64, Belvedere is for '65 — and then some!

"They", at Plymouth, of course, stands for the staff of more than 5,000 research, engineering and styling experts, who make a career at drawing board and bench, in laboratory and on test track, of keeping alive the tradition of mechanical excellence established by Walter P. Chrysler more than forty years ago — a thing you have come to take for granted in today's Plymouth.

ANOTHER BEVY OF HOT PERFORMERS

Remember the way Plymouth has been spelling out performance in capital letters on race track, test track, and in road tests recently?

You can have this performance six separate ways in Belvedere for '65! Your choice ranges from the economical eagerness of the 225-cu.-in. Standard Six to the hold-on-to-your-hat rambunctiousness of Belvedere's Optional 426-cu.-in. High Performance Commando V-8! Whichever engine you choose, you'll find your Belvedere "really has it when you ask for it."

PERFORMANCE PLUS WITH MINIMUM FUSS

It's a compliment to Plymouth that people have come to expect the kind of performance Plymouth delivers — day in and day out, mile after mile — with a minimum of fuss and fret.

You will be glad to hear that, again for '65, the engine and drive train components that contribute so largely to delivering that performance are covered by Plymouth's now-famous 5-year/50,000-mile warranty.†

EXTRA WIDE MODEL AND COLOR RANGE

There are surprises everywhere you look in Plymouth's '65 Belvedere. Like Belvedere's 18 temptingly styled models. They give you an uncommonly wide range of style-and-performance choices.

Like Belvedere's 15 solid colors and 19 "split-level" combinations. Each is in new acrylic enamel that makes it possible to maintain Belvedere's "showroom shine" much longer than was formerly possible.

THERE'S A BELVEDERE BUILT FOR YOU

Like Belvedere's model lineup of wagons, convertibles, sedans and hardtops. With the varied assortment of options available, it seems almost impossible to imagine you not finding a Belvedere that gives you the feeling it was made just for you! Like Belvedere's attractive "color-mated" interiors, with fresh new upholstery and floor-covering designs and materials. They feature improved wearability and make maintenance a wipe-clean thing.

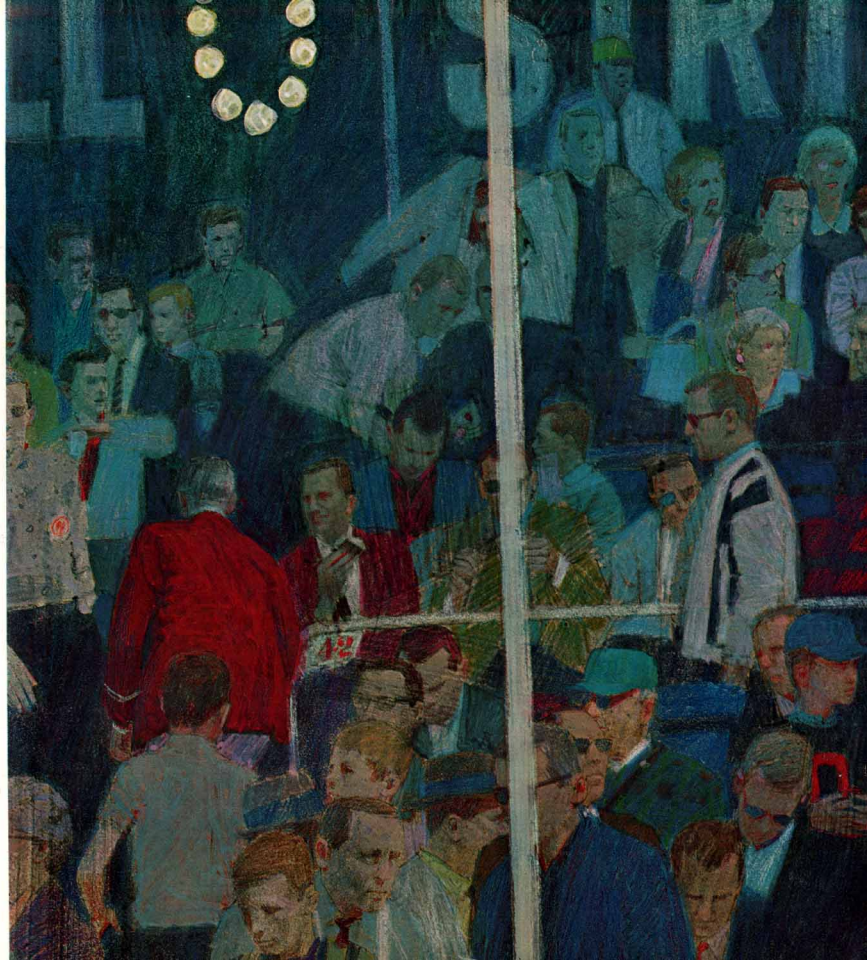


BEST WAY TO KNOW BELVEDERE IS TO DRIVE IT

Tempted to take a look? You'll never know what *real* temptation is until you see a Belvedere from the driver's seat! Belvedere — one of the Roaring '65s by Plymouth — a new way to swing without going out on a limb.

Choose yours the easy way. Find it in the following pages. Then see your Plymouth Dealer. If he doesn't have your Belvedere in stock, or ready for you to drive home, he'll be glad to deliver it to your door in short order.

†CHRYSLER CORPORATION'S 5-YEAR/50,000-MILE WARRANTY COVERAGE: Chrysler Corporation warrants, for 5 years or 50,000 miles, whichever comes first, against defects in materials and workmanship and will replace or repair, at a Chrysler Motors Corporation authorized dealer's place of business, the engine block, head and several parts, intake manifold, water pump, transmission case and rear-end parts (except axle shafts and differential, and rear wheel bearings) of its 1965 automobiles, provided the owner has the engine oil changed every 3 months or 4,000 miles, whichever comes first, the oil filter replaced every second oil change and the lubrication oil filter cleaned every 3 months and replaced every 2 years, and every 6 months furnishes to such a dealer evidence of performance of the required service, and requests the dealer to certify (1) receipt of such evidence and (2) the car's then current mileage.

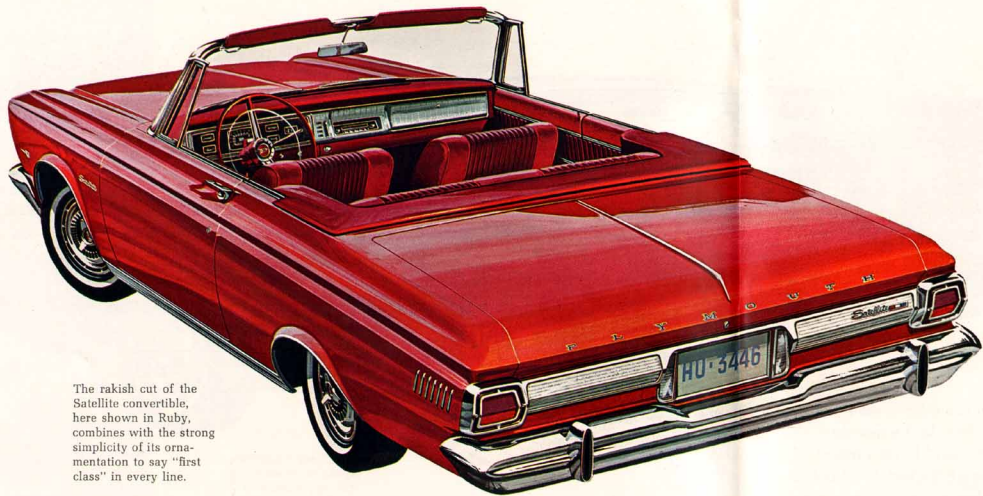


Satellite



Free-wheeling fun seekers and those who like their cars with an extraordinary flair, will find it hard to resist the luxury appeal of Satellite. Pride, prestige, performance, and pleasure have seldom come wrapped in a more attractive package at a more attractive price.

The clean, straightline styling of Belvedere is strikingly evident in this Satellite 2-Door Hardtop in Copper Metallic.



The rakish cut of the Satellite convertible, here shown in Ruby, combines with the strong simplicity of its ornamentation to say "first class" in every line.

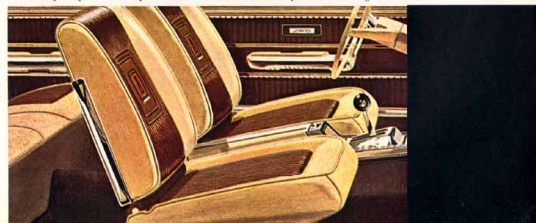
Satellite standard equipment 273-cu.-in. V-8 Engine / 3-Speed Manual Transmission / All-Vinyl Individual Bucket Seats / Compartment Console / Torsion-Bar Suspension / Offroad Shock Absorbers / Deluxe Wheel Covers / Self-Adjusting Brakes / Color-Keyed, Deep-Pile Carpeting / Single-Speed Electric Windshield Wipers / Heater-Defroster / Armrests Front and Rear (Ash Receivers in Rear) / Back-Up Lights / Right & Left Sun Visors / Chrysler Corporation Alternator and 12-Volt Battery / Cigarette Lighter / Automatic Convertible Top, Electrically Operated / Seat Belts-Front.

Popular options and accessories 318-cu.-in. V-8 Engine / 361-cu.-in. Commando V-8 Engine / 363-cu.-in. High Performance Commando V-8 Engine / 426-cu.-in. High Performance Commando V-8 Engine / 3-Speed Automatic Transmission / Deluxe Steering Wheel with Full Horn Ring / Padded Instrument Panel / Electric Clock / Power Steering / Power Brakes / "4-on-the-floor" Transmission (Hurst Linkage) with Console-Mounted Shift Lever / Sure-Grip Differential / Remote-Control Side-View Mirror / White Sidewall Tires / Power Windows / Tinted Glass / Air Conditioner / Seat Belts with Retractors / Radio, AM or AM-FM / Bumper Guards / Day-Nite Mirror / Variable-Speed Windshield Wipers and Washers.

Basic Specifications Overall Length/203.4 in. Overall Width/75.6 in. Overall Height/55.3 in. Wheelbase/116.0 in. Trunk Capacity/17.3 cu. ft. (See page 18 for complete specifications)



The radiant loveliness of Satellite's color-coordinated interiors is outdone only by the heavy-duty wearability of its new knit-backed vinyl seat-covering materials.





Belvedere II

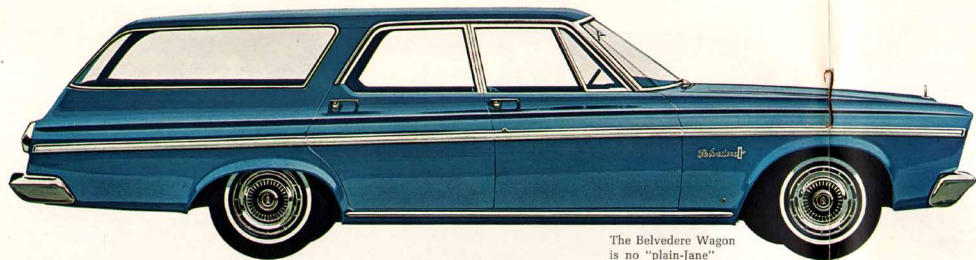


Belvedere's new single-unit headlamp treatment gives the Belvedere II 4-Door Sedan, here in Dark Blue Metallic, a stately look of quality.

Belvedere II can make everything a ball, from a short haul to the nearest store to a long haul to the farthest shore. It's a car with that stand-out-in-a-crowd look, and that move-out-in-front-of-the-crowd feel. You'll never feel the same about other cars after you drive a Belvedere II.



A sense of adventure and fun in the air become part of the standard equipment when you get behind the wheel of a Belvedere II Convertible. This one is in Medium Beige.



The Belvedere Wagon is no "plain-jane" utility vehicle. As exemplified by this Belvedere II 3-Seat Station Wagon in Medium Blue Metallic, it can go anywhere you can go, and "do itself proud."



The deep beauty of Plymouth's new acrylic enamel exterior finish is especially noticeable in the Dark Turquoise Metallic of the Belvedere II 2-Door Hardtop.

Belvedere II standard equipment 225-cu.-in. 6-cyl. Engine* / 273-cu.-in. V-8 Engine† / 3-Speed Manual Transmission / Vinyl-and-Fabric Interiors / All-Vinyl Interiors (Convertibles & Wagons only) / Torsion-Bar Suspension / Oriflow Shock Absorbers / Self-Adjusting Brakes / Color-Keyed, Deep-Pile Carpeting / Single-Speed Electric Windshield Wipers / Heater-Defroster / Armrests / Front and Rear Ash Receivers / Rear/Back-Up Lights / Super Foam Front Seat Cushions / Right & Left Sun Visors / Chrysler Corporation Alternator and 12-Volt Battery / Cigarette Lighter / Automatic Convertible Top, Electrically Operated / Seat Belts-Front.

*Price of standard vehicle will vary, dependent on choice of engine. The "Standard 8" will, naturally, cost somewhat more than the "Standard 6."

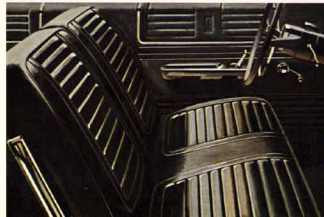
Popular options and accessories 316-cu.-in. V-8 Engine / 361-cu.-in. Commando V-8 Engine / 383-cu.-in. High Performance Commando V-8 Engine / 426-cu.-in. High Performance Commando V-8 Engine / 3-speed Automatic Transmission / "4-on-the-floor" Transmission (First Linkage) / Power Steering / Power Brakes / Power Windows / Radio, AM or AM-FM / Wheel Covers / White Sidewall Tires / Tinted Glass / Air Conditioner / Electric Clock / Seat Belts with Retractors / Sure-Grip Differential / Remote-Control Side-View Mirror / All-Vinyl Interior (Secans and Hardtops) / Bumper Guards / Day-Nite Mirror / Variable-Speed Windshield Wipers and Washers.

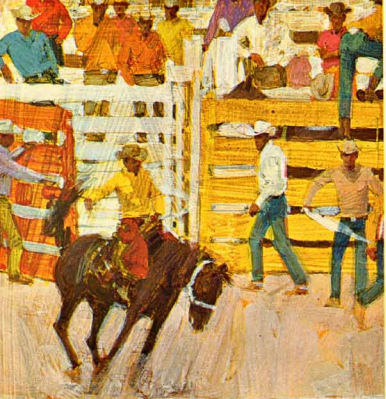
Basic Specifications Overall Length/203.4 in. Overall Width/75.6 in. Overall Height/54.3 in. Wheelbase/116.0 in. Trunk Capacity/17.3 cu. ft. (See page 18 for complete specifications)



Belvedere II passenger-car interiors match vinyl-and-fabric ruggedness with color-keyed richness and warmth.

Generous, almost cavernous cargo space is characteristic of all Belvedere II Station Wagons, whether 2- or 3-seat models.





Belvedere I

Dollar-saving economy with the look of quality is the key to the popularity of Belvedere I. Designed to fit into bashful budgets, it is every inch a Plymouth in quality, reliability, durability, and performance. It adds the joy of mile-after-mile economy to the many-pleasured enjoyment of Plymouth ownership.



The high-value look of this Belvedere I 4-Door Sedan in Black will never tip your hand to the neighbors with even a hint about its low price.



The 2-Door Sedan Belvedere I is the lowest-priced model in Plymouth's Belvedere Line. Almost incredible, isn't it, when you look at this Medium Turquoise Metallic example?



This Belvedere I 2-Seat Station Wagon, in Light Blue, is indicative of the beauty-plus-utility available in even the lowest-priced Belvedere Wagon in the line.

Belvedere I standard equipment 225-cu.-in. 6-cyl. Engine*/273-cu.-in. V-8 Engine*/3-Speed Manual Transmission/Vinyl-and-Fabric Interiors/All-Vinyl Interiors (Wagons only)/Torsion-Bar Suspension/Critlow Shock Absorbers/Self-Adjusting Brakes/Rubber Mat Floor Covering/Single Speed Electric Windshield Wipers/Heater-Defroster/Armrests Front and Rear (Ash Receivers in Rear)/Right & Left Sun Visors/Chrysler Corporation Alternator and 12-Volt Battery/Cigarette Lighter/Seat Belts-Front.

*Price of standard vehicle will vary, dependent on choice of engine. The "Standard 8" will, naturally, cost somewhat more than the "Standard 6."

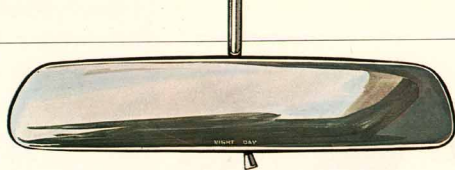
Popular options and accessories 318-cu.-in. V-8 Engine/361-cu.-in. Commando V-8 Engine/383-cu.-in. High Performance Commando V-8 Engine/426-cu.-in. High Performance Commando V-8 Engine/3-Speed Automatic Transmission/4-on-the-floor* Transmission (Hurst Linkage)/Power Steering/Power Brakes/Electric Clock/Back-Up Lights/Super Foam Front Seat Cushions/Radio, AM or AM-FM/Wheel Covers/White Sidewall Tires/Tinted Glass/Air Conditioner/Seat Belts-with Retractors/Sure-Grip Differential/Remote-Control Side-View Mirror/Day-Nite Mirror/Bumper Guards.

Basic Specifications Overall Length/203.4 in. Overall Width/75.6 in. Overall Height/55.0 in. Wheelbase/116.6 in. Trunk Capacity/17.3 cu. ft. (See page 18 for complete specifications)

The colorful, sturdy simplicity of Belvedere I interiors flatters your judgment in recognizing the high value in even Belvedere's economy-priced series.

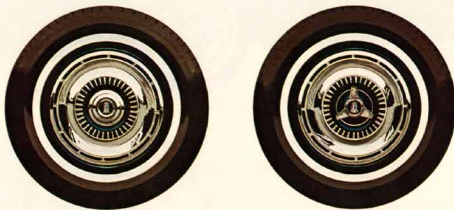


Options and Accessories



Mirror (Day/Nite-Inside-Rear-View)—This handy option gives clear-as-crystal image reproduction in the daytime, and a quick finger adjustment enables the driver to cut night glare of following headlights and reflected light from rainy streets to a minimum, for safer driving.

Wheel covers Decorative, sculptured, stainless steel wheel covers are an inexpensive "beauty treatment" for your Belvedere. And for an even racier touch of distinctive styling, the last word is these "custom" covers with simulated knock-off hubs (right).



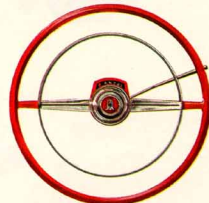
Mirror (Remote Control—Outside)—No need to open the door or even roll down the window, especially in inclement weather, to adjust this Mirror. A simple touch of the finger can adjust it instantly to the needs of the driver.

Rubber-Inserted Bumper Guards For the tailored or custom look that marks your Belvedere as the car of an owner with a taste for the practical in his ornamentation. The thick, black, molded rubber is protective as well as decorative.



Front Compartment Console Whether you're a "stick-shifter," or an "automatic addict," you can have your favorite type shift mounted in an attractive console. A "for-real" tachometer is also available with the console in the Belvedere Satellite.

Transmission (Torque-Flite Automatic)—Here is the ideal "driver-saver," to keep you relaxed and confident, and make driving your Belvedere an almost effortless adventure. Note the new Steering-Column-Mounted Selector Lever.



Transmission (Manual—4-speed-Hurst Linkage)—More fun than you can shake a stick at, and a distinctly sporty touch for the man who likes to feel he really has a hand in the driving of his Belvedere. The tachometer is available as an option with the stick shift, too.



AM-FM "Transaudio" Radio Something new in appearance and performance for 1965. Enjoy new clarity and purity of signal and tone, with a much more favorable signal-to-noise ratio than formerly, and superior tuning stability.

ADDITIONAL OPTIONS AND ACCESSORIES:

Power Steering—Here's the full-time answer to almost effortless manipulation of your car, especially when moving in and out of those snug city parking spaces, or sudden, tight highway situations.

Power Tailgate Window—A great footstep-saver when operated from the dash-mounted control switch, especially when the weather is bad. May also be operated from rear lock-cylinder control.

Power Brakes—Power Brakes offer a distinct advantage in those sudden, unexpected situations, and are especially recommended where trailer towing is contemplated.

Sure-Grip Differential—Maximum, positive transmission with minimum wheelspin is the major advantage of the optional Sure-Grip Differential.

Variable Speed Wipers with Windshield Washer—A safety option of almost incalculable value when the going is complicated by sleet, slush, ice, or thrown-up mud or salt from messy roadways. Washer is now supplied from a rigid plastic reservoir.

Tinted Window Glass—Driver comfort and convenience can be increased noticeably by the use of tinted windshield glass. The ideal situation for everybody in the car, of course, is the "full treatment" all around the car.

Seat Belts—New "Custom Retractable" Optional Seat Belts, both front and rear, are, beyond doubt, the best safety investment you could possibly make, and most convenient.

Light Packages—Belvedere's Light Packages offer you a Glove Box Light, Luggage Compartment Light, and Parking Brake Warning Light. The great added convenience far outweighs the small extra cost.

Performance Options

No matter how you interpret performance, Plymouth puts it at your fingertips, or your toe-tips, in Belvedere.

If performance, to you, means "plenty of power coupled with maximum economy," Belvedere's Standard Six is for you.

If performance is spelled with eight cylinders in your vocabulary, then Belvedere with the Standard 273-cu.-in. V-8, or the Optional 318-cu.-in. or 361-cu.-in. Commando V-8 will be right up your alley.

Should performance mean an even more upbeat thing to you, you're in the class that will favor Belvedere's Optional 383-cu.-in. High Performance Commando V-8.

Then, of course, if nothing but the hottest thing on wheels will fit your definition of performance, only Belvedere with the Optional 426-cu.-in. High Performance Commando V-8 will fill the bill.

Optional Commando V-8—361-cu.-in. 8-cylinder, 2-barrel carburetor, standard cam, single exhaust, 9.0 to 1 compression ratio, air cleaner with silencer, regular fuel.

Optional V-8—318-cu.-in. 8-cylinder, 2-barrel carburetor, standard cam, single exhaust, 9.0 to 1 compression ratio, air cleaner with silencer, regular fuel.

Optional High Performance Commando V-8—383-cu.-in. 8-cylinder, 4-barrel carburetor, special cam, dual exhaust, 10.0 to 1 compression ratio, unsilenced air cleaner, premium fuel.

Optional High Performance Commando V-8—426-cu.-in. 8-cylinder, 4-barrel carburetor, special cam, dual exhaust, 10.3 to 1 compression ratio, unsilenced air cleaner, premium fuel.

Standard Six—225-cu.-in. 6-cylinder, single-barrel carburetor, standard cam, single exhaust, 8.8 to 1 compression ratio, regular fuel.

Standard V-8—273-cu.-in. 8-cylinder, 2-barrel carburetor, standard cam, single exhaust, 8.8 to 1 compression ratio, air cleaner with silencer, regular fuel.

Special Trailer-Towing Equipment

TRAILER TOWING THE EASY WAY WITH PLYMOUTH

Special equipment will match your Belvedere to special trailer-towing jobs. This equipment is offered in the trailer-towing package described below, along with valuable information on how to help your car do its job easily.

BELVEDERE TRAILER-TOWING PACKAGE

Maximum loaded gross trailer weight—4000 pounds.

Trailer package is required for trailers with a gross weight of 2000 pounds.

Standard package equipment:

High-Capacity Cooling System, including:
 Special radiator
 High-pressure cap—16 psi
 Large 18" fan
 Fan shroud
 Yoke-to-hood air seal

Performance Axle—3.23 ratio

Heavy-Duty Suspension Front and Rear with Sway Bar

Police Brakes—11" Front and Rear (non self-adjusting)

Oversize Tires—8.25 x 14 on Station Wagons

7.75 x 14 on all except Station Wagons

(Use of tire chains with 8.25 x 14 tires should be avoided)

Wide Wheel Rims

Heavy-Duty Turn Signal Flasher

Heavy-Duty Stop Lamp Switch

Automatic Transmission required (Manual not available)

OPTIONAL EQUIPMENT RECOMMENDATIONS

These options will provide better performance and easier driving when pulling a loaded trailer:

Sure-Grip Differential

High-Output Alternator—40 amp.

Heavy-Duty Battery with Heat Shield—70 amp-hour

Power Brakes

Power Steering

Optional V-8—318-cu.-in., 8-cylinder engine, 2-barrel carburetor, standard cam, single exhaust, 9.0 to 1 compression ratio, air cleaner with silencer, regular fuel.

Optional Commando V-8—361-cu.-in., 8-cylinder engine, 2-barrel carburetor, standard cam, single exhaust, 9.0 to 1 compression ratio, air cleaner with silencer, regular fuel.

Optional High Performance Commando V-8—383-cu.-in., 8-cylinder engine, 4-barrel carburetor, special cam, dual exhaust, 10.0 to 1 compression ratio, unsilenced air cleaner, premium fuel.

NOTE: Trailer-towing packages are not available on cars equipped with the Commando 426-cu.-in. engine, or with manual transmission. Air conditioning not available with 8-cylinder engine. Frame-type load-equalizing hitch must be used on trailers having a loaded tongue weight of 200 pounds or more.

*CHRYSLER CORPORATION'S 5-YEAR/50,000-MILE WARRANTY COVERAGE Chrysler Corporation warrants, for 5 years or 50,000 miles, whichever comes first, against defects in materials and workmanship and will replace or repair at a Chrysler Motors Corporation Authorized Dealer's place of business, the engine block head and internal parts, intake manifold, water pump, transmission case and internal parts (excluding manual clutch), torque converter, drive shaft, universal joints, rear axle and differential, and rear wheel bearings of its 1968 automobiles, provided the owner has the engine oil changed every 3 months or 4,000 miles, whichever comes first, the oil filter replaced every second oil change and the carburetor air filter cleaned every 6 months and replaced every 2 years, and every 6 months furnishes to such a dealer evidence of performance of the required service, and requests the dealer to certify (1) receipt of such evidence and (2) the car's then current mileage.

WHAT YOU SHOULD KNOW BEFORE YOU GO

Tires . . . For all types of towing, air pressure in all tires should be increased 4 pounds over normal pressure.

Trailer Tongue Load . . . Frame-type load-equalizing hitch must be used on trailers having a loaded tongue weight of 200 pounds or more. Loaded trailer tongue weight on Belvedere should not exceed 450 pounds.

HITCHES

Load-Equalizing Hitch: This special type hitch is required for trailer towing. It distributes trailer loads throughout the main underbody structure of the car. It can also be adjusted to equalize trailer loads between front and rear suspensions of the car. Consult your trailer dealer for the type of hitch your trailer requires.

Not furnished by Plymouth

DRIVING TIPS FOR TRAILER TOWING

Boat Launching . . . always be sure to have your service dealer check the rear axle lubricant of your car if the rear axle should happen to submerge while launching a boat.

Cars with TorqueFlite . . . use the "2" speed when going up or down steep grades . . . this provides better pulling power and more effective downhill engine braking and engine cooling . . . it also reduces torque-converter action, improving gasoline economy.

Cars with Air Conditioning . . . the following precautions should be taken when pulling a trailer with an air-conditioned car on a hot day, if there is any evidence of engine overheating:

When climbing hills, select a lower transmission gear.

While stopped in heavy traffic, put the transmission in neutral and idle the engine at a higher speed.

When cruising on the highway, reduce speed.

NOTE: If the engine continues to overheat, shut off the air conditioner temporarily, until engine temperature returns to normal.

WHY A BELVEDERE IS YOUR BEST INVESTMENT IN DEFENDABLE, ECONOMICAL TRAILER TOWING

Plymouth engines have been consistent winners in the Mobil Economy Runs, and are more than competitive in performance, with reserve power for passing, and top fuel economy. Safety-Rim wheels are standard equipment. They help provide extra security in case of a blowout.

Wheel bearings and rear axles have sufficient capacity to handle the additional load imposed by a trailer, provided proper Towing Package is used.

TorqueFlite automatic transmission provides the performance, economy and engine braking that trailer owners want. TorqueFlite will withstand heavier loads than manual-shift units and will permit the engine to operate at its most efficient speeds. Trailer towing puts an extra load on the engine, transmission and rear axle of any car. These parts are warranted* for five years or 50,000 miles on your 1965 Plymouth, when the car is equipped with the trailer-towing package that meets the weight requirements specified in this brochure. It is recommended that the driving precautions contained in this brochure be followed to reduce the possibility of abnormal use.

PLYMOUTH DIVISION  **CHRYSLER**
MOTORS CORPORATION