

Hiller Ford Inc.
414-425-1000
www.hillerford.com

04 | Escape



Hiller Ford

HERE'S THE INFORMATION YOU REQUESTED



XLT No Boundaries Package with versatile rack system.

Next rest stop—5,000 feet.

You can easily conquer pavement in a Ford Escape, Hiller. But don't limit yourself to a "scenic overlook" off of Highway 1. Escape's Control Trac® II four-wheel-drive system lets you switch to "4x4 On" mode by turning a switch. And the fully independent suspension not only evens out rocky terrain, it helps optimize tire-to-road contact. What does that mean exactly? It means you have the driving control you need the moment you need it most. And why do we build it this way? Because it's a Ford SUV. And capability is what our SUVs are all about.

Escape Lineup Overview

XLS



Added power, added fun.

In addition to the standard features on every Escape model, listed below are a few of the key features included in the XLS.

- 3.0L DOHC Duratec V6 engine with 4-speed automatic transmission.
- 15 $\frac{1}{2}$ " styled-steel wheels.
- AM/FM single CD with clock and 4 speakers.
- Front lowback cloth bucket seats.

MSRP: **\$20,890***

EPA estimated mpg: **19 city/25 highway(FWD)****, **18 city/23 highway(4x4)****

XLT

Sporty capability and surprising comfort.

In addition to the standard features on every Escape model, listed below are a few of the XLT features that are upgrades over the XLS.

- Privacy glass.
- Fog lamps.
- AM/FM 6-disc in-dash CD player and 4 speakers.
- Convenience group, which includes perimeter alarm, floor mats and speed control.



MSRP: **\$23,145***

EPA estimated mpg: **19 city/25 highway(FWD)****, **18 city/23 highway(4x4)****

XLT APPEARANCE



Rugged good looks and ready for fun.

In addition to the standard features on every Escape model, listed below are a few of the XLT Appearance features that are upgrades over the XLT.

- Black side step bars.
- Painted Dark Shadow Grey lower bodyside cladding, bumpers and wheel-lip moldings.
- 16 $\frac{1}{2}$ " bright machined aluminum wheels.
- P235/70R16 all-season OWL tires.

MSRP: **\$25,720***

EPA estimated mpg: **19 city/25 highway(FWD)****, **18 city/23 highway (4x4)****

XLT NO BOUNDARIES

Outfitted for big adventure.

In addition to the standard features on every Escape model, listed below are a few of the XLT No Boundaries† features that are upgrades over the XLT.

- No Boundaries† Rack System.
- Class II Trailer Tow Package.
- Black side step bars and wheel-lip moldings.
- P235/70R16 all-terrain OWL tires and 16" painted aluminum wheels.



MSRP: **\$25,825***

EPA estimated mpg: **19 city/25 highway(FWD)****, **18 city/23 highway (4x4)****

LIMITED



Setting the Escape standard for luxury and refinement.

In addition to the standard features on every Escape model, listed below are a few of the Limited features that are upgrades over the XLT.

- Cargo area cover.
- Auto-dimming rearview mirror.
- Standard front seat side airbags.
- Available MACH CDx6 audio system.

MSRP: **\$25,205***

EPA estimated mpg: **19 city/25 highway(FWD)****, **18 city/23 highway(4x4)****

LIMITED LUXURY COMFORT

First-class luxury for all your getaways.

In addition to the standard features on every Escape model, listed below are a few of the Limited Luxury Comfort features that are upgrades over the Limited.

- Heated driver and front passenger seats.
- Reverse Sensing System.
- MACH CDx6 in-dash audio system with 7 speakers and automatic volume control.
- Heated, power sideview mirrors - driver and front passenger.



MSRP: **\$27,925***

EPA estimated mpg: **19 city/25 highway(FWD)****, **18 city/23 highway(4x4)****

* Starting Manufacturers Retail Price, excluding taxes, title and registration fees. Optional equipment not included.

** EPA estimated city/highway mpg based on base engine/transmission configuration.

† Always wear your safety belt and secure children in the rear seat.



"Best in safety (2003)" - Ford Escape XLS - Kiplinger's Personal Finance magazine.

Get safely on your way, Hiller.

After earning high ratings for crash test performances, it's clear that Escape has been built with a lot more than fun in mind. The National Highway Traffic Safety Administration (NHTSA) gave Escape a five-star rating in side impact testing for both the 1st and 2nd rows, a five-star rating for driver's side front crash testing, and a four-star rating for the front passenger side.* The five-star rating is NHTSA's highest award.

So, you may be asking, 'What's behind all of those stars?' Solid engineering. Every Escape is built with sturdy unibody construction and crumple zones that are designed to dissipate energy away from the passenger. Side intrusion door beams help reduce passenger compartment intrusion in certain side impacts and available side impact airbags** offer an extra measure of protection (standard on Limited). Plus, for controlled stopping power and steering control, XLT and Limited come with a standard 4-wheel anti-lock braking system(ABS).

*NHTSA ratings for 2001-2003 model year.

**Always wear your safety belt and secure children in the rear seat.

Featured Specifications - Interior Features

SEATING	XLS	XLT	Limited
Rear seat: 60/40 split bench, Premium cloth with recline, 2-way head restraints and tip-fold-flat latch	-	S	-
Rear seat: 60/40 split bench leather-trimmed seats with recline, 2-way head restraints and tip-fold-flat latch	-	O	-
Rear seat: 60/40 split seat, Premium leather-trimmed seats with recline, 2-way head restraints and tip-fold-flat latch	-	-	S
Front seat: cloth low back buckets	S	-	-
Front Seat: low back bucket, premium cloth with dual map pockets, and 6-way power driver seat	-	S	-
Front seat: low back bucket leather-trimmed seats with dual map pockets and 6-way power driver seat	-	O	-
Front seat: low back bucket, Premium leather-trimmed seats with dual map pockets and 6-way power driver seat	-	-	S
Removable rear seat cushion	S	S	S
Rear seat: bench, cloth seat back with recline, 2-way head restraints and tip-fold-flat latch	S	-	-

CLIMATE CONTROL	XLS	XLT	Limited
Manual air conditioning	S	S	S

ENTERTAINMENT SYSTEMS	XLS	XLT	Limited
AM/FM stereo (single CD), clock, 4 speaker system	S	-	-
AM/FM stereo with 6-disc in-dash CD system with clock, 4 speaker system	-	S	S
AM/FM single CD & cassette, clock, 4 speakers	-	O	-
MACH® Audio System with 6-disc in-dash CD, 7 speakers (Limited Luxury Comfort package includes automatic volume control)	-	O	O

INSTRUMENTATION	XLS	XLT	Limited
Instrument cluster with luminescent white-faced gauges, tachometer and warning signals	S	S	S

DRIVER ASSISTANCE	XLS	XLT	Limited
Reverse Sensing System (optional as part of Limited Luxury Comfort package)	-	-	O
Speed control (included in Convenience Group)	O	S	S
Steering wheel: black leather wrapped with speed control and tilt feature	-	-	S
Steering wheel: black with tilt feature	S	-	-
Steering wheel: black with speed control and tilt feature	-	S	-
Steering wheel: black leather wrapped (part of Leather Comfort Group)	-	O	-
Wipers/Defroster - front variable intermittent/low/high, rear two-speed and rear defroster	S	S	S

PASSENGER COMFORT	XLS	XLT	Limited
Rear floor heat ducts	S	S	S

REARVIEW MIRRORS	XLS	XLT	Limited
Auto-dimming rearview mirror with auto headlamps	-	-	S
Body color mirrors	-	-	S
Black, power adjust/manual fold mirrors	S	S	-
Day/night rearview mirror	S	S	-
Black, power adjustable/manual fold sideview mirrors	S	S	S
Heated sideview mirrors (with Limited Luxury Comfort package)	-	-	O

VISORS AND VISOR MIRRORS	XLS	XLT	Limited
--------------------------	-----	-----	---------

Sun visors with cloth-covered vanity mirrors	S	S	-
Sun visors with illuminated vanity mirrors	-	-	S

CONSOLES	XLS	XLT	Limited
Floor console (includes 5 cupholders and storage bin) (With 2.0L engine)	S	-	-
Overhead console with dual storage bins	-	-	S
Premium console (includes 4 cupholders, armrest and storage bin) (With 3.0L engine)	-	S	S

OTHER CONVENIENCE ITEMS	XLS	XLT	Limited
Belt Minder™ (driver's side seat belt warning system)	S	S	S
Illuminated entry	S	S	S
Passenger Assist Handles - four in front, two in rear	S	S	S
Power door locks – 2 keyless remotes with 2-step unlocking	S	S	S
Power point with cap	S	S	S
Power windows with one-touch down on driver's side	S	S	S

CARGO CARRYING AID	XLS	XLT	Limited
Cargo floor hooks (four)	S	S	S

INTERIOR COURTESY LIGHTING	XLS	XLT	Limited
Interior lights with off-delay (includes center dome with map lamps and rear cargo area light)	S	S	S

FLOOR COVERING	XLS	XLT	Limited
Floor mats, carpeted, color-keyed, front and rear with driver retention hook (offered as part of Convenience Group)	O	S	S

WINDOWS AND GLASS	XLS	XLT	Limited
Power moonroof with shade (Not available on XLT No Boundaries package)	-	O	O
Privacy glass	O	S	S
Solar tint glass with dot matrix pattern on windshield	S	S	S

COMFORT AND CONVENIENCE PACKAGES	XLS	XLT	Limited
Convenience Group (includes floor mats, perimeter alarm, speed control)	O	S	S
Leather Comfort Group (black leather wrapped steering wheel, leather-trimmed seats, front bucket and 60/40 split rear seat)	-	O	S
A truck that takes its business seriously.	-	-	O
Retractable cargo area cover	O	O	S

Featured Specifications - Exterior Features

BUMPERS	XLS	XLT	Limited
Bumpers: body color A-Gloss, front and rear 2-1/2 mph	-	-	S
Bumpers: grey, front and rear 2-1/2 mph	S	S	-

GRILLES	XLS	XLT	Limited
Grille - black surround with black mesh center	S	-	-
Grille - chrome surround with black mesh center	-	S	S

BODY MOLDINGS	XLS	XLT	Limited
Black liftgate molding	S	S	-
Body Color liftgate molding	-	-	S
Full grip ergonomic A-Gloss Body Color door handles	-	-	S

Full grip ergonomic MIC black door handles	S	S	-
--	---	---	---

BODY CLADDING	XLS	XLT	Limited
----------------------	------------	------------	----------------

Bodyside cladding and rocker molding: grey (Also wheel lip moldings on No Boundaries™ package)	S	S	-
Bodyside cladding, rocker and wheel lip moldings: body color	-	-	S

LIGHTING	XLS	XLT	Limited
-----------------	------------	------------	----------------

3-color taillamps	S	S	S
Aerodynamic halogen headlamps	S	S	S
Stop light, center high-mount	S	S	S
Fog lamps	-	S	S

LIFTGATE	XLS	XLT	Limited
-----------------	------------	------------	----------------

Liftgate with flip-up glass	S	S	S
-----------------------------	---	---	---

ROOF RACKS AND RAILS	XLS	XLT	Limited
-----------------------------	------------	------------	----------------

Roof Rack with two horizontal crossbars	O	S	S
No Boundaries™ Rack System (included in XLT No Boundaries package)	-	O	-

XLT PACKAGES	XLS	XLT	Limited
---------------------	------------	------------	----------------

It's top-of-the-line in traditional toughness.	-	O	-
XLT Appearance Package (includes painted Dark Shadow Grey bumper fascias, claddings, black sidestep bars and wheel lip moldings, 16" bright machined aluminum wheels and all season OWL tires)	-	O	-

RUNNING BOARDS AND STEP BARS	XLS	XLT	Limited
-------------------------------------	------------	------------	----------------

Side step bars	O	O	-
----------------	---	---	---

PAINT	XLS	XLT	Limited
--------------	------------	------------	----------------

Clearcoat paint	S	S	S
-----------------	---	---	---

Featured Specifications - Power and Handling

ENGINES	XLS	XLT	Limited
----------------	------------	------------	----------------

3.0L Duratec V6 engine with automatic overdrive transaxle	S	S	S
2.0L Zetec I-4 16-Valve engine with 5-speed manual O/D (Standard on XLS Value FWD only)	S	-	-

TRANSMISSIONS	XLS	XLT	Limited
----------------------	------------	------------	----------------

4-speed automatic O/D transmission	S	S	S
5-speed manual O/D transmission (Standard on XLS Value FWD only)	S	-	-

ELECTRICAL SYSTEM	XLS	XLT	Limited
--------------------------	------------	------------	----------------

Battery saver feature	S	S	S
-----------------------	---	---	---

FUEL SYSTEM	XLS	XLT	Limited
--------------------	------------	------------	----------------

Fuel tank: 16-gallon	S	S	S
----------------------	---	---	---

FRONT SUSPENSION	XLS	XLT	Limited
-------------------------	------------	------------	----------------

4-wheel independent suspension S S S

DRIVE SYSTEM	XLS	XLT	Limited
Control Trac II™ 4x4 system (standard on 4x4 only)	S	S	S

WHEELS	XLS	XLT	Limited
Wheels, 15" x 6.5" aluminum wheels	O	-	-
Wheels, 15" x 6.5" styled steel wheels	S	-	-
Wheels, 16" x 7" aluminum wheels	-	S	-
Wheels, 16" x 7" painted aluminum wheels (included with optional XLT No Boundaries package)	-	O	-
Wheels, 16" x 7" bright machined aluminum wheels (on XLT, included with optional XLT Appearance package)	-	O	S

TIRES	XLS	XLT	Limited
P225/70R15 BSW All-Season tires	S	-	-
P235/70R16 OWL All-Season tires (optional on XLT FWD, standard on XLT 4x4)	-	O	-
P235/70R16 BSW All-Season tires (Standard on XLT FWD)	-	S	S
P235/70R16 OWL All-Terrain tires (included with optional XLT No Boundaries package)	-	O	-

TRAILER TOWING PACKAGES	XLS	XLT	Limited
Class II trailer towing – 3500-lb. Towing capacity. Incl. Trailer hitch receiver, engine oil cooler and wiring harness w/4 pin connector(V6 only)	O	O	O

Featured Specifications - Safety and Security

OCCUPANT PROTECTION	XLS	XLT	Limited
Color-keyed manual 3-point shoulder belt system for rear outboard seats, lap belt rear center seat	S	S	S
Second Generation driver and front passenger airbags†	S	S	S
LATCH (Lower Anchors and Tethers for Children)	S	S	S
Side impact door beams	S	S	S
Color-keyed manual 3-point shoulder belt system with pretensioners and adjustable D-ring, driver and front passenger	S	S	S
Side-impact front air bags†	O	O	S

ACCIDENT AVOIDANCE	XLS	XLT	Limited
4-Wheel Anti-Lock Braking System	O	S	S

ANTI-THEFT OR SECURITY	XLS	XLT	Limited
SecuriLock™ Passive Anti-Theft System	S	S	S
Perimeter Alarm (included in Convenience Group)	O	S	S
Remote keyless entry (with 2 key fobs)	S	S	S
Our biggest, most powerful new addition.	S	S	S

S = Standard O = Optional - = Unavailable

Ford Division reserves the right to change product specifications at any time without incurring obligations.

† Always wear your safety belt and secure children in the rear seat.

Color Options & Wheel Styles



15" Styled Steel Wheel



15" Aluminum Wheel



16" Aluminum Wheel



16" Painted Aluminum Wheel



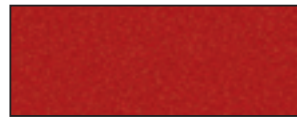
16" Bright Machined Aluminum Wheel



Oxford White



Gold Ash Metallic



Red Fire Metallic



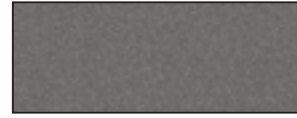
Aspen Green Metallic



True Blue Metallic



Satin Silver Metallic



Dark Shadow Grey Metallic



Black

Dealer Accessories

Your Ford Dealer has just the right vehicle for you, plus a host of accessories to tailor it perfectly to your needs. Check it out, Hiller.

The keyless entry pad will open your vehicle door for you with a programmed code. And because it operates by radio frequency, you won't need hardware to mount it.



Escape XLT's innovative No Boundaries® Rack System makes it easy to bring your bike along. Simply attach this lightweight JAC Vertical Bike Holder to the rack when lowered over your liftgate and you'll be on your way.

Escape has plenty of room to spread out in back, so put in a movie and let your fellow travelers relax. **This Rear Seat DVD Entertainment Center** can be installed by your dealer and ready for your next trip.



Why Ford Credit?

At Ford Credit, auto financing is our specialty, Hiller. Whether you purchase or opt for a Red Carpet Contract, we offer a range of terms and features that make your experience hassle-free. Contact your local Ford Dealer or visit us on the web at www.fordcredit.com



Roadside Assistance

Every new Ford includes the assurance of a 24-hour emergency Roadside Assistance Program provided during the 3-Year/36,000-mile limited warranty period. Ask your Ford Dealer for complete details on this program, which includes such services as fuel delivery, the change, jump start, or even help when you're locked out of your vehicle.

New Vehicle Limited Warranty

Under the New Vehicle Limited Warranty, you receive bumper-to-bumper coverage for 3 years/36,000 miles with no deductible. You also receive corrosion perforation coverage for five years with unlimited mileage and no deductible. Ask your Ford Dealer for a copy of the warranty.