



no boundaries

03 RANGER



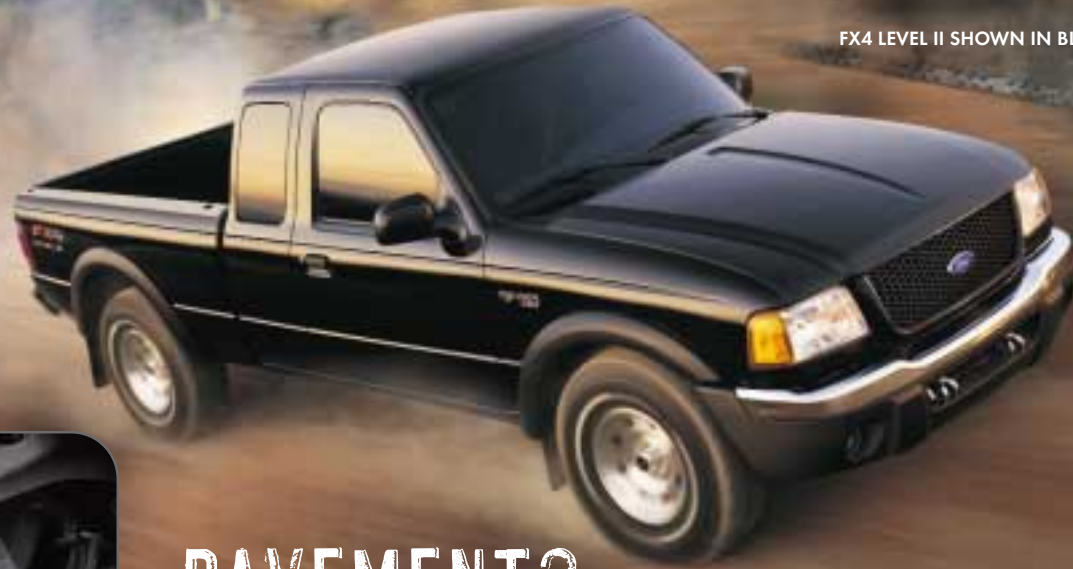
- RANGER FX4 LEVEL II
- RANGER FX4 OFF-ROAD
- RANGER EDGE
- RANGER XLT
- INTERIORS AND FEATURES
- SPECIFICATIONS
- PAINT AND TRIM
- WHEELS AND ENGINES



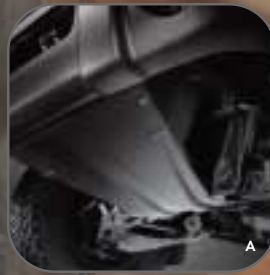
RANGER

FX4 LEVEL II

FX4 LEVEL II SHOWN IN BLACK.



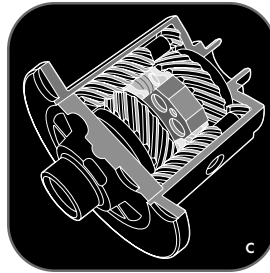
PAVEMENT? WHAT'S THAT?



A: WITH MULTIPLE SKID PLATES, THE ENGINE/OIL PAN, TRANSFER CASE AND FUEL TANK ARE STEEL CLAD AND READY FOR ACTION.



B: BILSTEIN® GAS SHOCK ABSORBERS ASK NO QUESTIONS. THEY SIMPLY DO THEIR JOB. AND THEY DO IT RIGHT.



C: SERIOUS OFF-ROADERS KNOW THE TORSEN® REAR DIFFERENTIAL IS THE TOOL THAT'S GOING TO GET YOU IN AND OUT OF HEAVY-DUTY TERRAIN, NO PROBLEM.

THE RANGER FX4 LEVEL II CAN SNIFF OUT THE GRITTIEST, UGLIEST, MOST UNACCOMMODATING ROAD THERE IS AND TURN IT INTO A PLEASURE CRUISE. HEAVY-DUTY EQUIPMENT LIKE A MIGHTY 4.0L V6 WITH LOTS OF LOW-END TORQUE AND A MANUAL TRANSFER CASE MAKE TAMING THE ROUGH AND WILD NOT ONLY POSSIBLE, BUT A TOTAL BLAST. IT'S EQUIPPED FOR IT WITH BF GOODRICH® KO'S, RANGER'S TOUGHEST OFF-ROAD TIRES MOUNTED ON FORGED ALCOA® ALUMINUM WHEELS. DIG IN AND GRIP HARD. GO AHEAD, THROW A LITTLE SAND AROUND. THAT'S WHY YOU'RE OUT THERE, ISN'T IT?

◀ MENU ▶

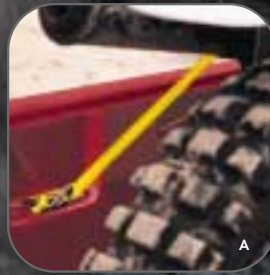
RANGER

FX4 OFF-ROAD

FX4 OFF-ROAD SHOWN IN TOREADOR RED.



MAKES MOLEHILLS OUT OF MOUNTAINS.



A



B



C

A: YOU'RE GONNA BE LOADING UP SOME HEFTY STUFF. THESE HEAVY-DUTY TIE-DOWN HOOKS WILL HELP KEEP IT ALL IN CHECK.

B: RANGER'S SHIFT-ON-THE-FLY 4X4 SYSTEM ALLOWS YOU TO GO FROM ASPHALT TO ROUGH TERRAIN AT THE FLIP OF A SWITCH.

C: HEART-THUMPIN' TUNES FROM THE STANDARD MACH® AUDIO SYSTEM WITH AM/FM STEREO/MP3/CD PLAYER KICK OUT CLEAR AND STRONG.

SOMETIMES THE STREETS GET TOO TIGHT AND YOU'VE GOTTA BREAK FREE. THAT'S WHAT RANGER FX4 OFF-ROAD WAS BUILT FOR. DEEP INSIDE ALL THAT LOOKIN'-GOOD CITY STYLE IS AN OFF-ROADER WITH TEETH TO GET YOU GONE WHEN THE NEED STRIKES. FROM THE KICKIN' MACH MP3/CD PLAYER TO THOSE 16" 5-SPOKE CAST ALUMINUM WHEELS, IT'S READY TO ESCAPE. AND IN ROCKS, MUD AND SNOW, THE HEARTY ALL-TERRAIN TREADS GET DOWN TO BUSINESS. SO WHEN IT'S TIME TO SCALE MOUNTAINS, RANGER FX4 OFF-ROAD KNOWS JUST WHAT TO DO.

RANGER

EDGE 4X2/4X4

EDGE 4X4 SHOWN IN SONIC BLUE.



AND IT STILL LOOKS GOOD IN THE MORNING.



A



B



C

A: NO FUN-FILLED NIGHT IS COMPLETE WITHOUT JAMS. LOTS OF 'EM. SO THE 6-DISC IN-DASH CD IS STANDARD ON EDGE PLUS PACKAGES.

B: THEY GET YOU WHERE YOU'RE GOING, AND LOOK GOOD ALONG THE WAY. AWESOME 15" SILVER-ALUMINUM WHEELS ARE INCLUDED IN THE 4X2 EDGE PLUS PACKAGES.

C: THE STANDARD SECURILOCK™ PASSIVE ANTI-THEFT SYSTEM USES A DIGITALLY CODED KEY TO ENFORCE A SIMPLE RULE: NO KEY, NO START, NO WAY.

FORD TOUGHNESS COMBINES WITH EXCELLENT DESIGN TO GIVE YOU A RIDE THAT IS TOTAL STYLE – RANGER EDGE. WITH THE POWERFUL V6 REVVIN', AND THE AVAILABLE MP3/CD PLAYER KICKIN' BASS HARD AND CLEAR, YOU'RE TURNING HEADS AT EVERY CORNER. A RAISED POWER DOME HOOD LINE AND PAINTED-PLATINUM HONEYCOMB GRILLE MAKE A LOUD STATEMENT. AND BODY-COLOR WHEEL-LIP MOLDINGS AND COLOR-KEYED BUMPERS ARE THE EXCLAMATION POINTS. NO LONGER WILL YOU SIMPLY GET FROM PLACE TO PLACE. IN THE RANGER EDGE SUPERCAB, YOU'LL ARRIVE IN STYLE.

◀ MENU ▶

RANGER

XLT 4X2/4X4

*Maximum capabilities shown are for properly equipped vehicles with required equipment and a 150-lb. driver. Weight of additional options, equipment, passengers and cargo must be deducted from this weight. For additional information, see your Ford Dealer.



A



B



C



NEVER HITS THE SNOOZE BUTTON.


XLT 4X2 SHOWN IN SILVER FROST WITH OPTIONAL SIDE STEP BAR.


A: THE AVAILABLE 4.0L V6 ENGINE KICKS OUT A MIGHTY 207 HP AND SUPPLIES 238 LB.-FT. OF HARD-WORKING TORQUE AT THE HIGH END OF THE XLT LINE.

B: THE 4-VALVE 2.3L DOHC ENGINE LAUNCHES THE RANGER XL WITH AN AUTHORITATIVE 153 LB.-FT. OF TORQUE.

C: THE OPTIONAL CLASS III HITCH RECEIVER ALLOWS YOU TO PULL UP TO 5000 LBS. WHEN PROPERLY EQUIPPED.

AT THE END OF THE DAY, THE RANGER XLT IS ALL ABOUT PLAY. AND WHILE YOU'RE WAITING FOR THE DAY'S LABOR TO END, AN OPTIONAL 6-DISC IN-DASH CD PLAYER SUPPLIES PLENTY OF CHOICE TUNES TO KEEP YOU GOING. POWER WINDOWS, LOCKS AND MIRRORS, A REMOTE KEYLESS ENTRY SYSTEM, AND A LEATHER-WRAPPED STEERING WHEEL ARE THE COOL STANDARDS THAT MAKE YOU FEEL LIKE YOUR HARD WORK IS ALL WORTH IT.

		MAXIMUM PAYLOAD CAPABILITIES*	
REGULAR CAB - 4X2 1640 LBS.	REGULAR CAB - 4X4 1540 LBS.	SUPERCAB - 4X2 1660 LBS.	SUPERCAB - 4X4 1560 LBS.

		MAXIMUM TOWING CAPABILITIES*	
REGULAR CAB - 4X2 4100 LBS.	REGULAR CAB - 4X4 5740 LBS.	SUPERCAB - 4X2 5860 LBS.	SUPERCAB - 4X4 5580 LBS.

RANGER

INTERIORS AND FEATURES

XLT CONTROL PANEL

PART OF THE RANGER XLT'S VERSATILITY COMES FROM A FULL-FUNCTIONING CONTROL PANEL THAT FEATURES HANDY, WELL-PLACED CONTROLS, DRIVER AND RIGHT-FRONT PASSENGER AIRBAGS,* A TRIP ODOMETER, AND WARNING INDICATORS SUCH AS CHECK ENGINE, CHECK GAUGES AND BRAKE SYSTEM LIGHTS.

*ALWAYS WEAR YOUR SAFETY BELT AND DEACTIVATE THE PASSENGER AIRBAG WHEN USING A REAR-FACING CHILD SAFETY SEAT.



A



B

INTERIORS

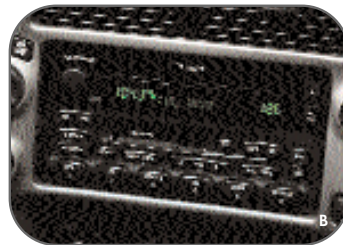
A: RANGER'S OPTIONAL SPORT BUCKET FRONT SEATS ARE COVERED IN CLOTH AND BOLSTERED TO ENCOURAGE AN ACTIVE LIFESTYLE.

B: OFF-ROADERS WHO CRAVE THE CONTROL A MANUAL TRANSFER CASE OFFERS SHOULD DO THEIR ADVENTURING IN THE FX4 LEVEL II. ALSO FOUND IN THIS SPACIOUS CAB ARE SPORT BUCKET SEATS, A LEATHER-WRAPPED STEERING WHEEL, SPEED CONTROL, AND A POWER PACKAGE THAT INCLUDES POWER WINDOWS, LOCKS, MIRRORS AND REMOTE KEYLESS ENTRY.

C: ANY RANGER DRIVER CAN APPRECIATE THIS OPTION. TILT STEERING WITH SPEED CONTROL. SET 'EM HOW YOU LIKE 'EM AND ROLL.

RANGER

INTERIORS AND FEATURES



RANGER TREMOR

LIKE TO SHAKE THINGS UP? RANGER TREMOR WILL SHAKE YOUR FILLINGS OUT WITH 485 WATTS OF PREMIUM PIONEER® AUDIOPHILE SOUND, 10" DOWN-MOUNTED SUB-WOOFER, UNIQUE GAUGES, AND LOTS OF OTHER FEATURES TO ANNOUNCE YOUR ARRIVAL.



INTERIOR OPTIONS

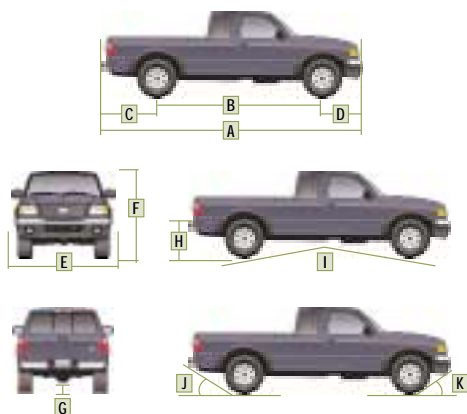
A: RANGER EDGE AND FX4 OFF-ROAD WILL RULE THE ROAD WITH THE MACH® AUDIO SYSTEM WITH AM/FM STEREO/MP3/CD PLAYER. QUALITY AND DEFINITION OF SOUND THAT IS ABSOLUTELY INCREDIBLE. AVAILABLE ON SOME RANGER MODELS.

B: WANT MORE AUDIBLE OPTIONS? SELECT DUAL MEDIA, AND AM/FM, CD OR CASSETTE ARE AT YOUR BECK AND CALL.

C: ADD THE AM/FM STEREO/CD PLAYER TO RANGER XL AND SUDDENLY SOUND VALUES GET RICHER, COLORS GET BRIGHTER, AND DRIVING IS MORE FUN.

D: FLIP OPEN RANGER'S CENTER ARMREST CONSOLE AND YOU'LL FIND AN IMPRESSIVELY ROOMY STORAGE COMPARTMENT LARGE ENOUGH FOR TRAVEL BOOKS, TAPES AND CD'S.

SPECIFICATIONS



	Regular Cab 4x2/4x4	SuperCab 4x2/4x4	SuperCab FX4 Level II
Exterior			
A. Overall length			
6' box	187.5"	201.7"	201.7"
7' box	199.5"	—	—
B. Wheelbase			
6' box	111.4"/111.6"	125.7"/125.9"	125.9"
7' box	117.4"/117.6"	—	—
C. Overhang – rear			
6' box	42.8"/42.6"	42.7"/42.5"	42.5"
7' box	48.8"/48.6"	—	—
D. Overhang – front	33.3"	33.3"	33.3"
E. Overall width	69.4"/70.4"	69.4"/70.4"	70.4"
F. Height	64.9"/67.9"	64.8"/67.8"	69.0"
G. Ground clearance (rear axle)	10.0"	9.8"/10.1"	9.0"
H. Ground to open tailgate height	28.5"/31.6"	27.9"/31.3"	33.0"
I. Ramp breakover angle	21.6°/20.9°	18.7°/19.4°	21.6°
J. Angle of departure	25.4°/28.5°	24.6°/29.3°	23.2°
K. Angle of approach	23.3°/23.7°	23.7°/25.8°	31.0°
Interior			
1st row			
Head room	39.3"	39.3"	39.3"
Shoulder room	53.8"	53.8"	53.8"
Hip room	52.7"	52.7"	52.7"
Leg room	42.4"	42.4"	42.4"
2nd row			
Head room	—	33.3"	33.3"
Shoulder room	—	15.0"	15.0"
Hip room	—	19.6"	19.6"
Leg room	—	40.4"	40.4"
Cargo Area	6'7"Flare side	6"Flare side	6"
Volume (cu. ft.)	37.3/43.4/34.4	37.3/34.4	37.3
Length at floor	72.2"/84.7"/72.2"	72.2"	72.2"
Width at wheelhouse	40.4"	40.4"	40.4"
Width at top of box	54.2"/54.2"/45.8"	54.2"/45.8"	54.2"
Height	16.4"/16.4"/16.7"	16.4"/16.7"	16.4"

STANDARD FEATURES

Safety/Security

Airbags* – Driver and right-front passenger
 Belt-Minder™ safety belt reminder
 Brake/shift interlock
 Bumpers – 5-mph energy-absorbing
 Passenger airbag deactivation switch
 Safety belt energy management retractors – Front outboard positions
 Safety belt pretensioners – Front outboard
 SecuriLock™ – Passive anti-theft system
 Side intrusion door beams

Mechanical

100,000-mile tune-up interval**
 4-wheel anti-lock braking system (ABS)
 Battery saver – Deactivates interior lights after 20 minutes
 Body-on-frame construction
 Electronic 2-speed shift-on-the-fly 4-wheel-drive system (4x4 models only)
 Electronic brake force distribution (EBD)
 Lightweight aluminum hood
 Power front disc/rear drum brakes
 Power rack-and-pinion steering
 Quick-release tailgate
 Stabilizer bar – Front
 Styleside bed
 Suspension – Front: independent Short- and Long-Arm;
 rear: 2-stage leaf springs

Interior

Coat hook – In rear of cab
 Floor console – Includes 2 cupholders
 Front dome light (map lights standard on XLT)
 Power point – 12-volt
 Shoulder belt height adjusters – Front outboard positions
 Tachometer

Exterior

2-door Regular Cab
 Cargo tie-down hooks – 4 in cargo box
 Dual side-view mirrors
 Headlamps – Aero halogen
 Privacy glass (rear glass, quarter windows and backlight)
 Rear-quarter flip windows (SuperCab)
 Solar tinted glass
 Tow hooks – Front (4x4 models only)
 Trailer tow – Class II receiver with 4-pin connector
 Windshield wipers – Variable-intermittent

*Always wear your safety belt and deactivate the passenger airbag when using a rear-facing child safety seat.

**Under normal driving conditions with regular fluid and filter changes.

MODEL-SPECIFIC FEATURES/OPTIONS

	XL 4x2	Edge 4x2	Edge 4x4	XLT 4x2	XLT 4x4
Mechanical					
2.3L DOHC 16-valve I4 engine	—	—	—	—	—
3.0L OHV 12-valve V6 engine	—	—	—	—	—
4.0L SOHC 12-valve V6 engine	—	—	—	—	—
5-speed manual transmission	—	—	—	—	—
5-speed automatic transmission	—	—	—	—	—
15" argent steel wheels	—	—	—	—	—
15" 7-spoke silver styled-steel wheels	—	—	—	—	—
15" silver-aluminum wheels	—	—	—	—	—
15" 7-spoke chrome styled-steel wheels	—	—	—	—	—
16" cast aluminum wheels (16" steel spare)	—	—	—	—	—
16" 5-spoke cast aluminum wheels (16" steel spare)	—	—	—	—	—
P225/70R15 all-season BSW tires	—	—	—	—	—
P235/75R15 all-terrain OWL tires	—	—	—	—	—
P245/75R16 all-terrain OWL tires	—	—	—	—	—
Axle ratio – 3.55:1	—	—	—	—	—
Axle ratio – 3.73:1	—	—	—	—	—
Axle ratio – 4.10:1	—	—	—	—	—
Limited slip rear axle	—	—	—	—	—
Seating					
Front 60/40 vinyl split-bench seat	—	—	—	—	—
Front 60/40 cloth split-bench seat	—	—	—	—	—
Front cloth sport bucket seats	—	—	—	—	—
Rear vinyl jump seats (SuperCab models only)	—	—	—	—	—
Interior					
Air conditioning ¹	—	—	—	—	—
AM/FM stereo with clock and 2 speakers	—	—	—	—	—
AM/FM stereo with CD, clock and 4 speakers	—	—	—	—	—
AM/FM stereo with CD/cassette dual media, clock and 4 speakers	—	—	—	—	—
MACH® AM/FM stereo with MP3/CD, clock and 4 speakers	—	—	—	—	—
AM/FM stereo with 6-disc in-dash CD player, clock and 4 speakers	—	—	—	—	—
Assist handle – Passenger side	—	—	—	—	—
Black vinyl floor covering (textured on Edge)	—	—	—	—	—
Carpeted floor covering	—	—	—	—	—
Door trim panels with map pockets	—	—	—	—	—
Floor mats – Color-keyed (front only)	—	—	—	—	—
Leather-wrapped steering wheel	—	—	—	—	—
Power Equipment Group – Includes power windows, power door locks and remote keyless entry system	—	—	—	—	—
Storage tray – Behind seat (Regular Cab)	—	—	—	—	—
Tilt steering wheel with speed control	—	—	—	—	—

■ Standard ✓ Select Availability □ Optional — Not Available

¹Required with automatic transmission, optional with manual transmission on XL 4x2. Discounted equipment on all other models.

Competitive comparisons based on publicly available information and Ford certification data at time of printing. Some features discussed may be optional. Vehicles shown may contain optional equipment. Features shown may be offered only in combination with other options or subject to additional ordering requirements or limitations. Following publication of the catalog, certain changes in standard equipment, options and the like, or product delays, may have occurred which would not be included in these pages. Your Ford Dealer is the best source for up-to-date information. Ford Division reserves the right to change product specifications at any time without incurring obligations.

PAINT COLORS



Oxford White



Arizona Beige Metallic



Chrome Yellow

INTERIOR/EXTERIOR COMBINATIONS

			Medium Prairie Tan
			Dark Graphite
			Ebony/Red
			Ebony/Blue
			XL
	■		Oxford White
■			Arizona Beige Metallic
■	■		Bright Red
	■		Silver Frost Metallic
	■		Black
			Edge
■	■		Oxford White
	■		Chrome Yellow
■	■		Bright Red
	■		Sonic Blue Metallic
■	■		Black
			Tremor
	■		Chrome Yellow
	■		Sonic Blue Metallic
	■		Black
			XLT and FX4 Off-Road
■	■		Oxford White
■			Arizona Beige Metallic
■	■		Bright Red
■	■		Toreador Red Metallic
■			Dark Highland Green Metallic
	■		Deep Wedgewood Blue Metallic
	■		Sonic Blue Metallic
	■		Silver Frost Metallic
■	■		Black
			FX4 Level II
		■	Oxford White
		■	Bright Red
		■	Sonic Blue Metallic
		■	Silver Frost Metallic
		■	Black



Bright Red



Toreador Red Metallic



Dark Highland Green Metallic



Deep Wedgewood Blue Metallic



Sonic Blue Metallic

Ford uses clearcoat paint for beauty and protection. Colors shown are representative only. See your dealer for actual paint/trim options.



Silver Frost Metallic



Black

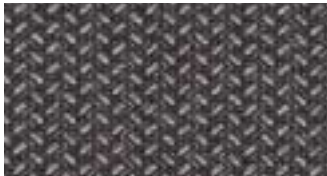
TRIM COLORS



Medium Prairie Tan Cloth



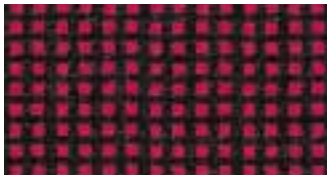
Medium Prairie Tan Vinyl



Dark Graphite Cloth



Dark Graphite Vinyl



Ebony/Red Cloth



Ebony/Blue Cloth

WHEELS



15" Argent Steel Wheel
Standard on XL



15" 7-Spoke Silver Styled-Steel Wheel
Standard on Edge and XLT 4x2



15" 7-Spoke Chrome Styled-Steel Wheel
Available on XLT 4x2



15" Silver-Aluminum Wheel
Available on Edge



16" Cast Aluminum Wheel
Included on Edge Standard and XLT 4x4s



16" 5-Spoke Cast Aluminum Wheel
Standard on selected Edge and XLT 4x4s



15" 8-Hole Forged-Aluminum Wheel
Standard on FX4 Level II



16" 5-Spoke Machined-Aluminum Wheel
Standard on Tremor

ENGINES

HORSEPOWER AND TORQUE

2.3L DOHC 16-Valve I4

Horsepower: 143 hp @ 5250 rpm

Torque: 154 lb.-ft. @ 3750 rpm

3.0L OHV 12-Valve V6

Horsepower: 154 hp @ 5200 rpm

Torque: 180 lb.-ft. @ 3900 rpm

4.0L SOHC 12-Valve V6

Horsepower: 207 hp @ 5250 rpm

Torque: 238 lb.-ft. @ 3000 rpm

Maximum Loaded Trailer Weight (lbs.) – Automatic Transmission

Engine	Axle Ratio	GCWR (lbs.)	Regular Cab		SuperCab	
			4x2	4x4	4x2	4x4
2.3L DOHC I4	4.10	5500	2240	—	—	—
3.0L OHV V6	3.73	7500	4100	—	3940	—
	4.10 ¹	7500	4000	—	3800 ¹	—
	4.10	7500	—	3820	—	—
4.0L SOHC V6	3.55	9500	—	—	5860	—
	3.55 ¹	9500	5940	—	5740	—
	3.73/4.10	9500	—	5740	—	5580 ²

Maximum Loaded Trailer Weight (lbs.) – Manual Transmission

Engine	Axle Ratio	GCWR (lbs.)	Regular Cab		SuperCab	
			4x2	4x4	4x2	4x4
2.3L DOHC I4	3.73	4800	1640	—	—	—
3.0L OHV V6	3.73	6000	2640	—	2480	—
	4.10 ¹	6000	2540	—	2340	—
	4.10	6000	—	2360	—	—
4.0L SOHC V6	3.55 ¹	7000	—	—	3280	—
	4.10	7000	—	3280	—	3120 ³

¹Ranger Edge only. ²5160 lbs. with FX4. ³2700 lbs. with FX4.