

F O R D 1 9 9 4

# THUNDERBIRD



## 1994 THUNDERBIRD

Discover for yourself in a Ford Thunderbird the style, comfort and performance that create a truly rewarding driving experience.

Discover something else, too. Prestige: that special quality that evolves with a unique nameplate as its reputation for excellence in personal luxury and comfort grows over the years.

### THE EVOLUTION CONTINUES

In 1994, the evolution of the renowned Thunderbird emblem carries on with significant improvements:

Dynamic front and rear exterior styling refinements.

An interior redesigned for greater comfort and convenience — and equipped with driver and front passenger air bag supplemental restraint systems (SRS).

An electronic 4-speed automatic overdrive transmission controlled by computer — standard in the LX, optional in the Super Coupe.

Plus two newly available options: the advanced-design 4.6-litre SOHC V-8 (for the LX model) and the Electronic Traction Assist system that's linked to 4-wheel anti-lock braking technology (standard on Super Coupe).

Ford Thunderbird. More than ever, it's a personal luxury car superbly designed for driving enjoyment and riding comfort. And carefully engineered for your safety.



*At right: The new 1994 Thunderbird Super Coupe in Crimson Clearcoat. Lower bodyside cladding and P225/60ZR performance tires on directional cast aluminum wheels are among the SC's many unique features. Some equipment shown is optional.*



## QUALITY

Ultimately, the quality of your driving experience is the final test of your car's quality. Which is why much time and effort are committed to helping ensure that every design and engineering feature in a Ford car is carefully examined for its contribution to customer satisfaction.

Thunderbird's excellent quality results in part from a

best-in-class approach to design and engineering. In a variety of categories, from vehicle dynamics and mechanical operation to comfort and aesthetics, over 350 Thunderbird features were compared against those of select domestic and import nameplates. The goal was to be best-in-class in as many of these features as possible.

Quality is often something you can easily see, such as the precision of body seam tolerances, the lustre of the paint finish, the uniform fit of the upholstery.

Some qualities, though, are not meant to be seen but felt: the comfort of the seating and the ease of operating ergonomically designed controls, for example.

Of particular significance is Thunderbird's structural integrity, which engineers have enhanced by using techniques such as applying special adhesives to body joints in addition to welding.

Ford Thunderbird gives you that special sense of smooth, stable ride comfort you'd expect in a superbly engineered personal car.

*The new 1994 Thunderbird LX in Indigo Clearcoat Metallic. Some equipment shown is optional.*



## OCCUPANT SAFETY

There's only one thing more important than your physical comfort: the peace of mind which comes with knowing that your car is thoroughly engineered for your safety.

From its body structure to many of its individual components, Ford Thunderbird is developed and exhaustively tested with safety as a primary concern.

Thunderbird is equipped with "occupant safety" features — those specifically designed to help protect you and your passengers in the event of an accident.

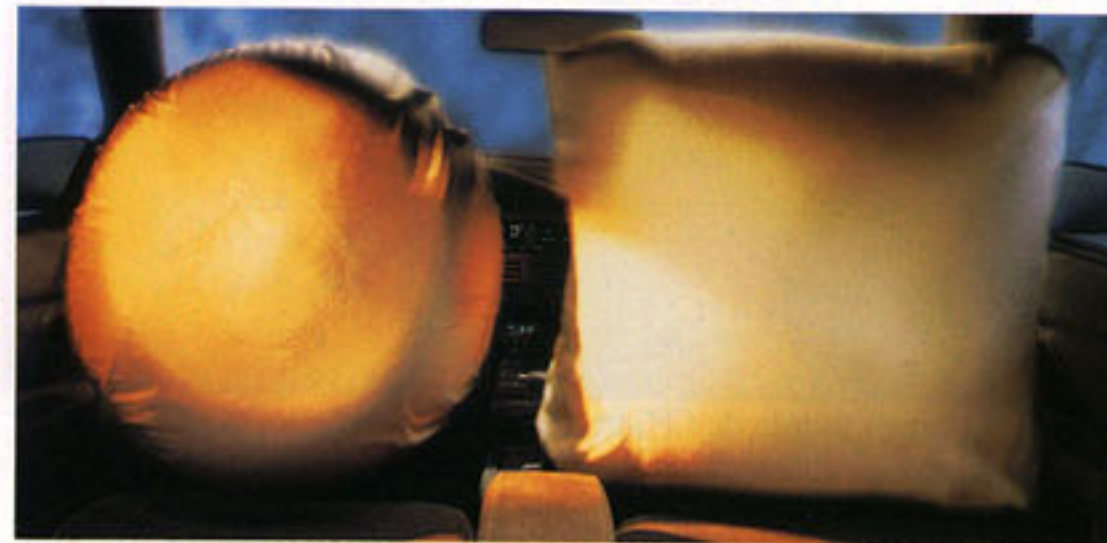
There are occupant safety features you might never associate with safety, such as energy-absorbing visors and door trim panels designed for impact protection.

Then there are the more obvious safety features, like energy-absorbing instrument panel padding and, most notably, the air bag supplemental restraint system (SRS).

The air bag is a new feature of the 1994 Thunderbird's new interior design. It's provided as standard equipment for both the driver and the front seat passenger.

The air bag supplemental restraint system, designed to activate in certain frontal impacts, inflates in less than 1/10 of a second and begins deflating immediately.

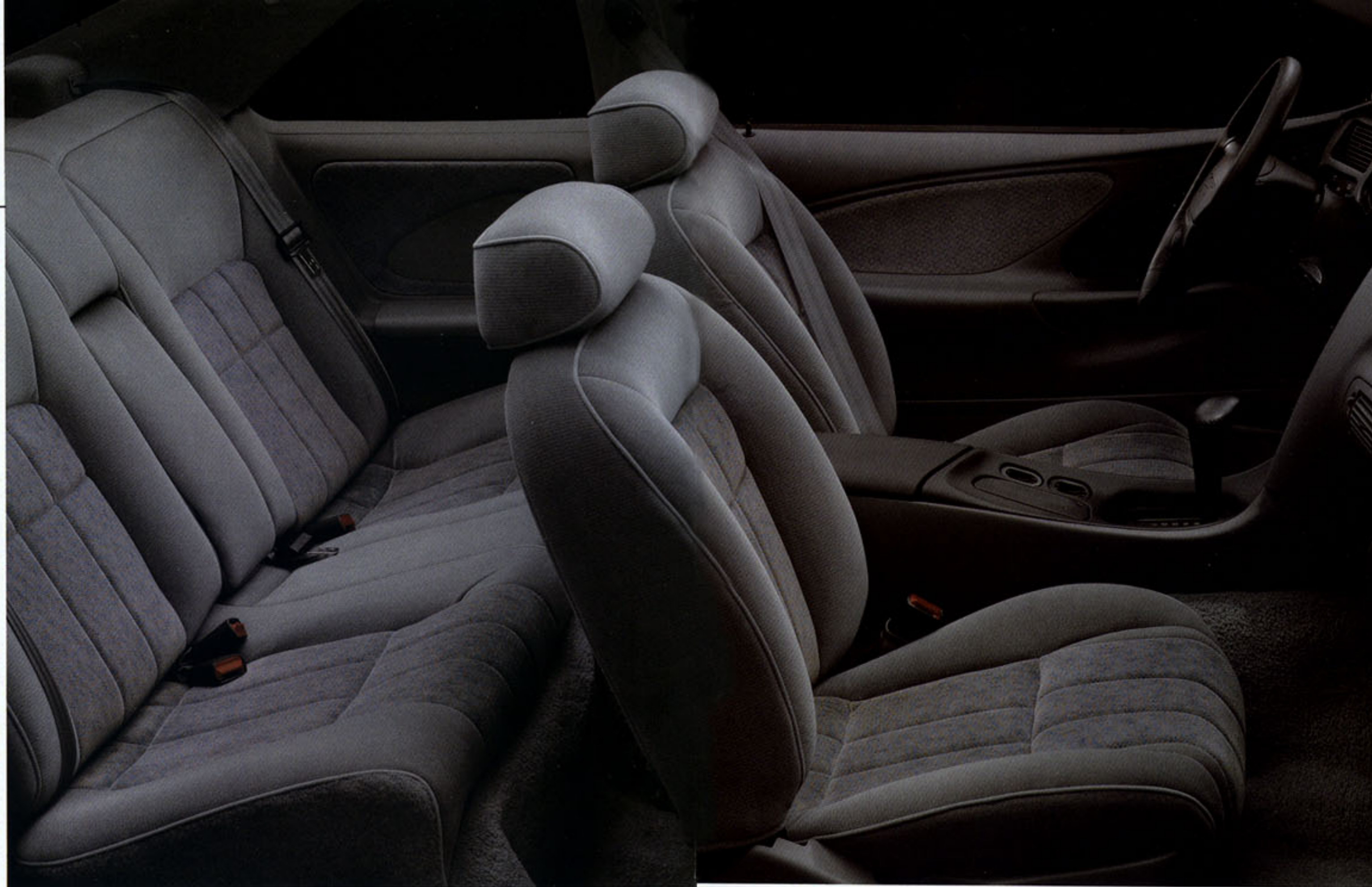
Important as the air bag is, always remember that it's intended only to supplement your lap and shoulder belts, which can help protect you in all types of impacts.



*The all-new Thunderbird LX instrument panel in Opal. Some equipment shown is optional.*

*Thunderbird for 1994 provides an air bag as standard equipment for both the driver and the front seat passenger.*

## ALL-NEW INTERIOR



*Thunderbird for 1994 has an all-new interior design. Featured here is the well-equipped and luxuriously trimmed LX interior in Opal. Some equipment shown is optional.*



*Above: Now standard in the Thunderbird LX are the smoothness and precision of a computer-controlled electronic 4-speed automatic overdrive transmission. The shift lever is leather-wrapped.*

*CFC-free air conditioning, standard in LX, is designed with new rotary controls.*

This year's Ford Thunderbird features an all-new interior designed to provide a higher level of driving satisfaction for you and more riding enjoyment for your passengers.

The traditional long list of Thunderbird LX features has grown to include CFC-free manual air conditioning

(electronic semi-automatic temperature control on the Super Coupe) and an illuminated entry system. On both the LX and Super Coupe are standard air bag supplemental restraint systems for the driver and front passenger, electric remote control mirrors, luxury level door panel trim,

680 g. (24 oz.) cut-pile carpeting, tilt steering wheel and speed control - these, too, are features you would expect in a car of Thunderbird's stature.

What you might not expect in a genuine driver's car, however, is generous room for five. While 2-door coupes typically fall short

when it comes to meeting the needs of those seated in the rear compartment, Thunderbird, you'll pleasantly discover, is an exception to this norm.

Few cars in Thunderbird's class accommodate all their passengers as comfortably as Thunderbird accommodates its five occupants.



*Above: Speed control is one of the Thunderbird LX's many amenities.*

*Illuminated controls are a new feature of the LX and Super Coupe's standard power windows and door locks.*

*At left: The instrument cluster features the clarity of analog gauges. A trip odometer, too.*



## DYNAMIC STYLING

In the world of 2-door luxury coupes, Thunderbird's design is distinctive, unmistakable. An eloquent statement of Ford design leadership.

Dynamic styling. This was the goal that Ford designers achieved when they created Thunderbird's unique design: a shape possessing striking visual appeal as well as functional efficiency.

Following are a few of the many Thunderbird features designed to direct the flow of air smoothly over, under and around the body:

Air for engine cooling taken in from under the bumper rather than through a conventional grille. Integrated, flush bumpers. Aero-design halogen headlamps blending into the contours of the front end.

Fenders curving into the hood line. Doors merging into the roof line with concealed drip rails. And aero-designed rearview mirrors.

As a result of Thunderbird's aerodynamics, the engine operates more efficiently because it doesn't have to work as hard to overcome the inhibiting force of air drag at cruising speeds. The

interior is made quieter. And also, through careful fine-tuning of the body surface, the air flow is purposefully directed in such a way as to create downforce, which enhances handling control.

The Ford Thunderbird for 1994. It's design is modern and contemporary, and an elegant expression of your personal style of driving.



*Above: Thunderbird Super Coupe in Crimson Clearcoat.*

*At left: Thunderbird Super Coupe in Teal Clearcoat Metallic.*

*Some equipment shown is optional.*

## DRIVER CONTROL

A car's performance depends on the quality and precision of its engineering. In much the same way, a driver's performance depends on the excellence of the car's ergonomic design.

### THE CREATION OF A GENUINE DRIVER'S CAR

The singular objective of ergonomics is clear: to make driving as comfortable and convenient as possible, so that you can devote as much attention as possible to the operation of the car.

thorough understanding of how you function, mentally and physically, as the driver.

The important controls are within close reach and are identifiable quickly by touch; the instruments are located and coloured to make them easy to read at a glance.

The leather-wrapped steering wheel is designed to provide an unobstructed view of the instrument cluster as well as a firm grip.

Seating is designed for firm and supportive comfort.



The all-new Thunderbird Super Coupe instrument panel (above) and interior (at right) in Opal. Some equipment shown, such as the leather seating surfaces, is optional.

That's why Ford designers focused so much attention and effort on crafting the interior of the Thunderbird around the driver's special needs. Because ultimately, a car that is more comfortable and easier to drive is more enjoyable to drive.

In Thunderbird, behind every detail of design you sense by sight or touch is a

The Super Coupe's articulated sport seats, featured here, have power-adjustable lumbar and side bolster supports and can be adjusted to a wide range of positions. Designed to help hold you in place when cornering, the SC's sport seat is just what you'd expect in a car of such high-performance capability.



In the centre console of the instrument panel are the air conditioning system (with new rotary-style controls), the stereo radio/cassette sound system, and the new integrated warning lamp module, part of the Luxury Group option. In the module are a switch for the Electronic Traction Assist system (included in the SC with optional electronic 4-speed automatic transmission) and lights for low coolant, fuel, washer fluid, door ajar, plus "firm" ride (SC only).

Thunderbird SC offers you a standard 5-speed manual overdrive transmission (shown) or optional electronic 4-speed automatic with Electronic Traction Assist. Controls for the SC's automatic ride control suspension are located on the floor console for ease of reach and operation.

Some equipment shown on these pages is optional.

## OPERATING SAFETY

Thunderbird is designed to help protect you in an accident, with features such as standard driver and front passenger air bags.

Of vital importance, too, are the "operating safety" features for handling and braking control that can help you avoid an accident in the first place.

### LX SUSPENSION

The 4-wheel independent suspension, equipped with components such as nitrogen gas-pressurized shocks and variable-rate coil springs, is engineered for ride quality and tight handling.

Handling is enhanced by front and rear stabilizer bars. Also, the rear toe-control

link, similar to those found on European performance cars, helps control a wheel's direction as the suspension moves up and down, especially during hard acceleration, cornering and braking.

### SC SUSPENSION

With its special suspension package (16" Z-rated performance tires, plus higher-rate stabilizer bars, coil springs and front suspension lower arm pivot bushings), Super Coupe delivers high-performance handling capability.

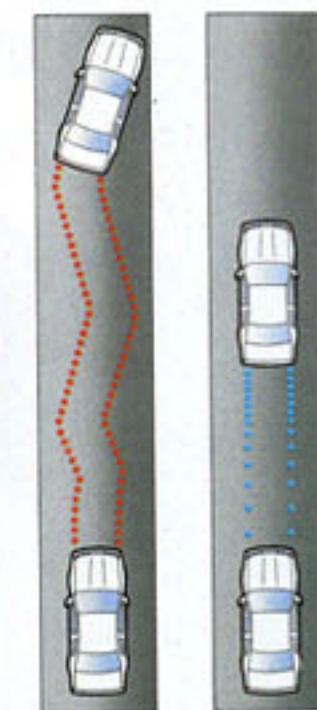
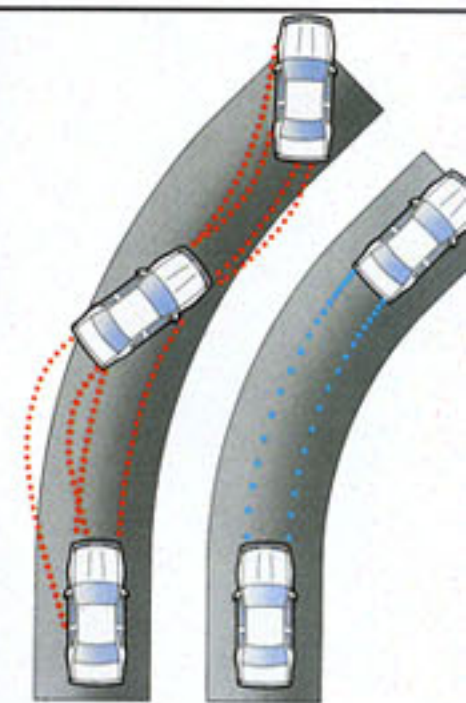
Super Coupe is equipped also with the automatic ride control system that adjusts the shock absorber damping with split-second precision to suit the driving situation. Damping is "normal" for a smooth ride or "firm" when extra handling is required (the "firm" mode may also be selected manually).

### SPEED SENSITIVE STEERING

This computer-controlled system delivers more power assist at low speeds (when cornering or parking) and reduces power assist as vehicle speed increases to provide the firmer, more controlled feel of the wheel you need at cruising speeds.

### ANTI-LOCK BRAKE SYSTEM

The anti-lock brake system (ABS) prevents the wheels from locking up during hard braking by applying and releasing the brakes at a



The air bag supplemental restraint system, an important occupant protection feature, is standard equipment for both the driver and front passenger.



For added security, Thunderbird offers a keyless remote entry system. Included with the option is the illuminated entry system, which provides a ring of light around the lock cylinder and turns on the interior lights when the door handle is lifted.



speed far exceeding that of human capability — up to 10 times per second. It's much like a professional driver who skilfully "pumps" the brakes, only much faster.

ABS, standard on Super Coupe and optional on Thunderbird LX, provides greater steering control and smooth, straight stops under most conditions, even on wet and slippery roads.

### ELECTRONIC TRACTION ASSIST SYSTEM\*

Linked to ABS technology is Electronic Traction Assist. Its sensors monitor wheel rotation at low speeds to help ensure optimum traction. When wheel slippage is detected, the brakes are automatically applied to slow down the slipping wheel(s), thereby providing an added measure of control.

Now available for Thunderbird is the advanced Electronic Traction Assist system, designed to improve low-speed acceleration on loose or slippery surfaces.



The anti-lock brake system prevents the wheels from locking up in hard braking situations, providing smoother, straighter stops and greater steering control. It's standard with the high-performance Super Coupe and optional on the Thunderbird LX.

\*Electronic Traction Assist system requires the electronic 4-speed automatic overdrive transmission, which is optional in the Thunderbird LX and Super Coupe.



Thunderbird offers you a range of powerteam choices, one of which is sure to match your style of driving.

There's the 3.8-litre V-6, standard in LX; the newly available 4.6-litre V-6 option for the LX; and the high-performance 3.8-litre supercharged and intercooled V-6 in the Super Coupe.

Thunderbird engines are equipped with the precision of a computer-controlled "sequential" electronic fuel injection system.



**SUPERCHARGED 3.8-LITRE SEFI V-6: SUPER COUPE**

The 3.8-litre supercharged and intercooled V-6 delivers 6-cylinder fuel economy at constant speeds and muscular V-8 power on demand when the supercharger kicks in.

Mechanically driven, the supercharger works across a broad rpm range. Response is quick, even from a start. And the intercooler, which lowers the temperature of the air passing through it to the combustion chambers, increases the density of the air for even more power.

**3.8-LITRE SEFI V-6: THUNDERBIRD LX**

The 3.8-litre V-6 is smooth and responsive. Its sequential electronic fuel-injection system releases fuel precisely and efficiently to each cylinder in "sequence" with the engine's spark firing order.

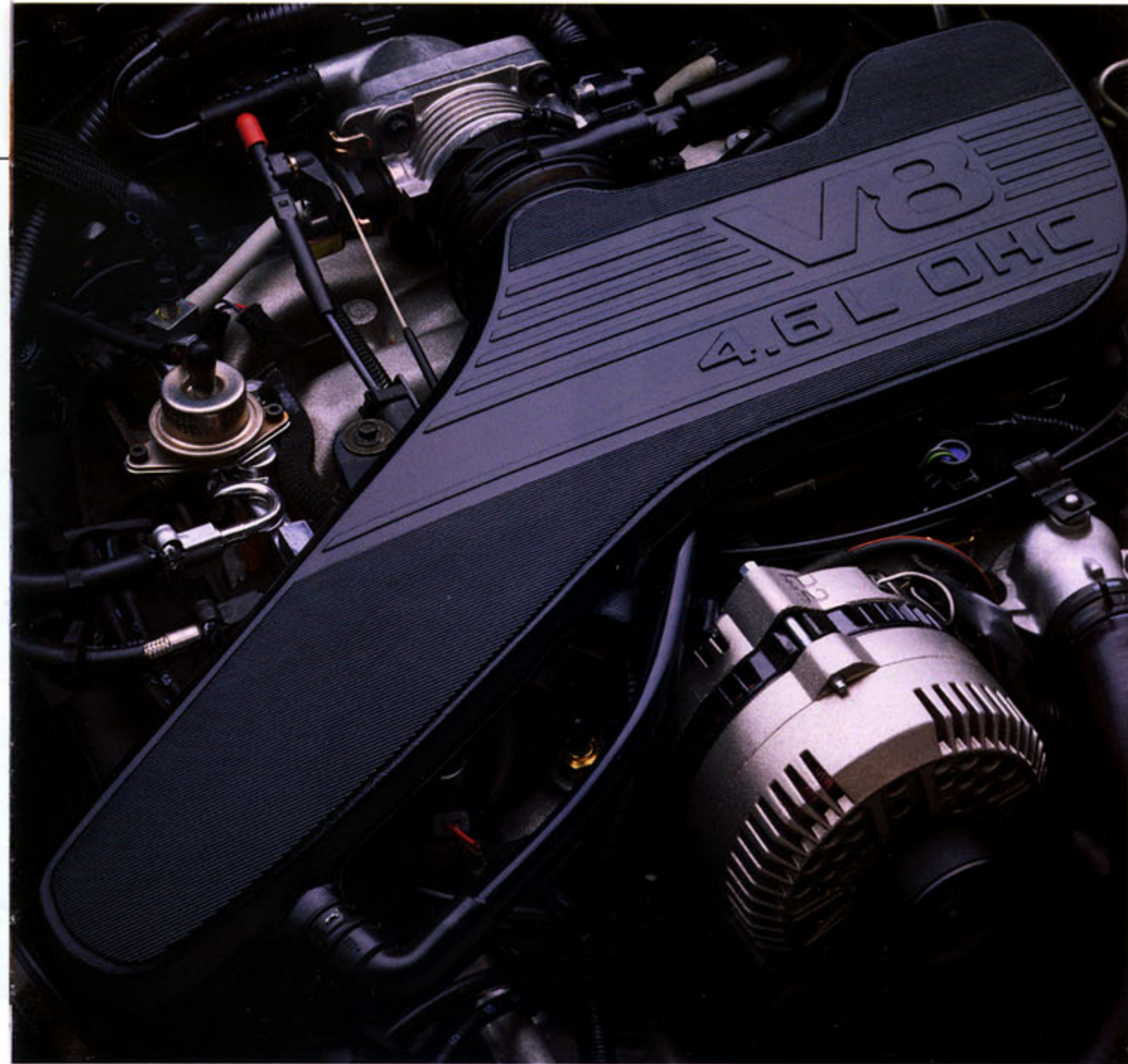
Fuel metering and ignition

timing are just a few of the numerous operations governed by Ford's EEC-IV electronic engine control system. Constantly analyzing operating conditions, EEC-IV fine-tunes the engine to the requirements of the moment.

**4.6-LITRE SEFI V-8: THUNDERBIRD LX**

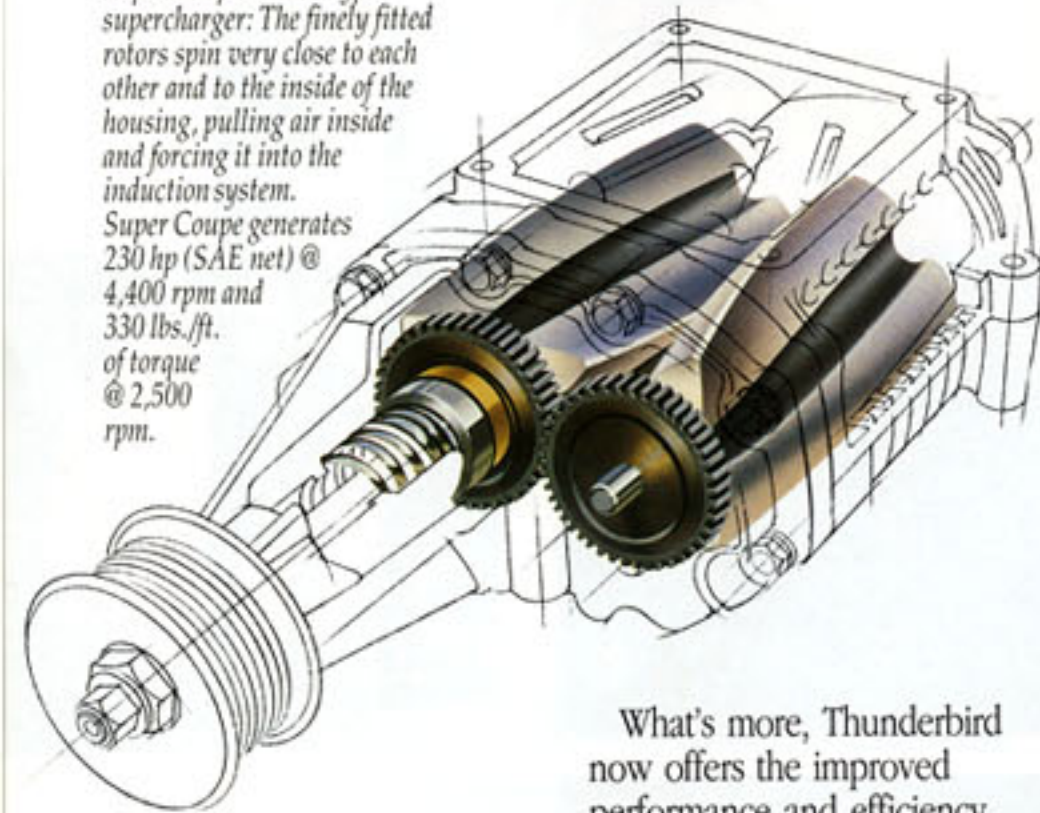
The 4.6-litre V-8, a new option for LX only, is one of the most advanced engines in its class. Its overhead cam design, for example, contributes to increased power output per litre. Displacing just 4.6 litres, it generates 205 hp (SAE net) @ 4,500 rpm.

In addition to sequential multi-port electronic fuel injection, the 4.6-litre V-8 features the precise air metering of an electronically governed mass air flow sensor, plus the enhanced driveability provided by a distributorless ignition system.



*The newly available 4.6-litre V-8 (optional in LX only) has features such as a single overhead cam design and sequential electronic fuel injection. One of the most advanced engines in its class, it's teamed with the smoothness and precision of an electronically controlled 4-speed automatic overdrive transmission, also a new feature in Thunderbird for 1994.*

*Super Coupe's roots-type supercharger: The finely fitted rotors spin very close to each other and to the inside of the housing, pulling air inside and forcing it into the induction system. Super Coupe generates 230 hp (SAE net) @ 4,400 rpm and 330 lbs./ft. of torque @ 2,500 rpm.*



What's more, Thunderbird now offers the improved performance and efficiency of an electronic 4-speed automatic overdrive transmission controlled by computer (standard with LX, optional with Super Coupe). Its overdrive lockout feature lets you select 2nd gear for start-up on slippery surfaces and allows 2nd gear braking on downgrades.

# STANDARD FEATURES AND OPTIONS

## PREFERRED EQUIPMENT PACKAGES AND OPTIONS

P = Included in package S = Standard O = Optional

Note: Package content is subject to change.

	LX 146A	Super Coupe 151A
Group 1:		
Power door locks, speed control, and 6-way power driver's seat	S	S
Group 2:		
Electronic semi-automatic CFC-free temperature control system (includes outside temperature indicator)	P	S
Group 3:		
Aluminum wheels with P215/70R15 BSW all-season tires (LX), P225/60ZR16 BSW performance tires (standard on SC), dual illuminated visor mirrors	P	P
Luxury group: autolamp group (on/off delay and automatic day/night mirror); illuminated entry system — standard in LX; light group (instrument panel courtesy light and engine compartment light) — standard in SC; 6-way power passenger seat; and integrated warning lamp module (warning lights for low fuel, low radiator coolant, low washer fluid and door ajar lights; plus switch for optional Electronic Traction Assist system in LX and SC models thus equipped)	O	O
Leather seating surfaces (1)	O	O
Cellular phone — "hands free"	O	O
Anti-theft system	-	O
Remote keyless entry system	O	O
Electronic AM/FM stereo radio with cassette player, power antenna, premium sound system	O	P
Ford JBL audio system	-	O
Compact disc changer (2)	O	O
Electronic AM/FM stereo radio with compact disc player (dealer-installed option)	O	O
Front floor mats	S	S
Power moonroof	O	O
Engine block heater, heavy-duty battery, rear window defroster	S	S
4.6-litre SEFI V-8	O	-
Electronic 4-speed automatic transmission (3)	S	O
Anti-lock braking system	O	S
Electronic Traction Assist (4)	O	O
P225/60ZR16 BSW all-season performance tires	-	S
Traction-Lok rear axle	O	S

(1) Split fold-down rear seat without centre armrest included in Super Coupe. (2) Requires electronic AM/FM stereo radio with cassette player/premium sound system in LX, and the Ford JBL audio system in Super Coupe. (3) Includes Electronic Traction Assist in Super Coupe. (4) Not available in Super Coupe with 5-speed manual transmission, standard with Super Coupe and automatic transmission.

## COLOURS AND TRIMS

Exterior Paint Colours	Interior Trim Colours				
	Opal Grey	Evergreen	Mocha	Portofino Blue	Ruby Red
<b>LX</b>					
Champagne Clearcoat Metallic	■	■	■		
Electric Red Clearcoat Metallic	■		■		■
Light Evergreen Frost Clearcoat Metallic	■	■	■		
Indigo Clearcoat Metallic	■			■	
Moonlight Blue Clearcoat Metallic	■		■	■	
Deep Emerald Green Clearcoat Metallic	■	■	■		
Teal Clearcoat Metallic	■		■		
Black Clearcoat	■	■	■	■	■
Vibrant White	■	■	■	■	■
Opal Frost Clearcoat Metallic	■	■	■	■	■
White Opalescent Clearcoat	■	■	■	■	■
<b>Super Coupe</b>					
Moonlight Blue Clearcoat Metallic	■		■	■	
Teal Clearcoat Metallic	■		■		
Black Clearcoat	■		■	■	■
Vibrant White	■		■	■	■
Crimson Clearcoat	■		■		■
Opal Frost Clearcoat Metallic	■		■	■	■
White Opalescent Clearcoat	■		■	■	■

## MAJOR THUNDERBIRD STANDARD FEATURES

### Thunderbird LX

3.8L V-6 engine with sequential multi-port electronic fuel injection, 140 horsepower

Electronic 4-speed automatic overdrive transmission with overdrive lockout switch

Long-spindle SLA front suspension with variable-rate coil springs, double-acting gas-pressurized shock absorbers, and a 27 mm (1.06") diameter stabilizer bar

Independent H-arm rear suspension with toe-control link, variable-rate springs, gas-pressurized shocks, 26 mm (1.04") diameter stabilizer bar

Variable power-assist, speed-sensitive steering

Power front disc/rear drum brakes

Stamped steel 15" x 6.0" wheels with styled road wheel covers and P205/70R15 BSW all-season tires

Body colour bodyside protection mouldings

Driver and front passenger air bag supplemental restraint systems; active lap/shoulder belts

Lap/shoulder belt restraints for rear outboard passengers; lap belt for centre rear passenger

Full-length console with floor-mounted leather-wrapped shift and dual cupholders

Map/dome, luggage compartment, ashtray and front glove box

CFC-free air conditioning and tinted glass

Power windows with illuminated switches

Power door locks with illuminated switches; remote decklid and fuel filler door releases

Interval windshield wipers

Dual electric remote-control mirrors

Luxury level door trim and carpeting

Illuminated entry system (LX only)

Analog performance instrumentation: fuel, engine temperature and oil pressure gauges; voltmeter; and trip odometer

Block heater

Rear window defroster

Heavy-duty battery

Floor mats

Luxury cloth reclining bucket seats and 6-way power driver seat adjustment

Leather-wrapped luxury steering wheel

Electronic AM/FM stereo with cassette tape player and digital clock

Speed control

Tilt steering wheel

Rear seat courtesy lights

Rear seat centre armrest

Rear seat heat duct



The optional power moonroof can be tilted up, or it can be slid back into the roof panel by pressing an overhead switch. Pressing and holding the switch moves the glass panel to the intermediate position; pressing it a second time moves the panel to the full open position.

Electronic AM/FM stereo with cassette tape player and digital clock

Speed control

Tilt steering wheel

Rear seat courtesy lights

Rear seat centre armrest

Rear seat heat duct



The optional compact disc changer, mounted inside the trunk for security, can hold up to ten discs.

The cellular telephone option with storage armrest has features such as automatic radio volume muting, 30-number memory storage, and voice-activated "hands-free" operation.

**Super Coupe (in addition to or in place of those in Thunderbird LX)**

3.8L supercharged, intercooled V-6 with sequential multi-port electronic fuel injection

5-speed manual overdrive transmission

Supercharger boost gauge (in place of voltmeter)

Automatic ride control suspension (in addition to standard suspension)

Driver's footrest

Handling components: 28 mm (1.10")-dia. solid front stabilizer bar and 23 mm (0.90")-dia. solid rear stabilizer bar

Traction-Lok rear axle (manual transmission)

Four-wheel power disc brakes with anti-lock system

Integral fog lamps in front fascia

Directional cast aluminum 16" x 7.0" wheels and P225/60ZR black sidewall performance tires

Lower bodyside cladding and unique rear fascia

Light convenience group: instrument panel courtesy light and engine compartment light

Cloth/leather/vinyl articulated sport performance seats, power lumbar and seat back bolster adjustments



Enjoy the excellent clarity and performance of the electronic AM/FM stereo radio with compact disc player (dealer-installed option).



The convenience of the automatic day/night rearview mirror is a feature included in the optional Luxury Group.



From left to right: styled road wheel covers (standard on LX), 15" cast aluminum wheels (included in the LX Preferred Equipment Package), and 16" cast aluminum wheels (standard on Super Coupe).

# THUNDERBIRD SPECIFICATIONS

## Engine, Thunderbird LX

Type	V-6
Valves	12, OHV
Displacement	3.8L (000 cu. in.)
Horsepower (SAE net)	140 @ 3,800 rpm
Torque (SAE net lbs./ft.)	215 @ 2,400 rpm
Fuel system	Sequential multi-port electronic fuel injection

## Engine, Thunderbird LX

Type	V-8
Valves	16, SOHC
Displacement	4.6L (000 cu. in.)
Horsepower (SAE net)	205 @ 4,500 rpm
Torque (SAE net lbs./ft.)	265 @ 3,200 rpm
Fuel system	Sequential multi-port electronic fuel injection

## Engine, Thunderbird SC

Type	Supercharged/intercooled V-6
Valves	12, OHV
Displacement	3.8L (000 cu. in.)
Horsepower (SAE net)	230 @ 4,400 rpm
Torque (SAE net lbs./ft.)	330 @ 2,500 rpm
Fuel system	Sequential multi-port electronic fuel injection

## Transmissions

Type	Electronic 4-speed automatic overdrive (std. in LX, opt. in SC) 5-speed manual overdrive (std. in SC)
------	--

## Body/Chassis

Drivetrain type	Rear-wheel drive
Body type	Unitized
Steering	Variable power-assist, speed-sensitive

## Body/Chassis con't

Brakes	Power front disc/rear drum (LX) Power 4-wheel disc with anti-lock system (SC)
Front suspension*	Long-spindle SLA-type with variable-rate coil springs, double-acting nitrogen gas-pressurized shocks, 27 mm (1.06")-dia. stabilizer bar (28 mm (1.10") solid in SC)
Rear suspension*	Independent H-arm design with toe control link, variable-rate shock springs, nitrogen gas-pressurized shocks, 26 mm (1.04")-dia. stabilizer bar (23 mm (0.90") solid in SC)
Tires	P205/70R15 BSW all-season (LX) P225/60ZR16 BSW performance (SC)
Fuel capacity	68 litres (15.0 imp. gal.)

\*Super Coupe also has the automatic ride control adjustable suspension (page 14.)

## Dimensions mm (in)

	2-Door
Wheelbase	2870 (113.0)
Length	5088 (200.3)
Height	1334 (52.5)*
Width	1847 (72.7)
Front tread	1565 (61.6)
Rear tread	1529 (60.2)
Front head room	968 (38.1)
Rear head room	953 (37.5)
Front leg room (max.)	1080 (42.5)
Rear leg room (min.)	909 (35.8)
Front shoulder room	1499 (59.0)
Rear shoulder room	1496 (58.9)
Trunk volume [litres (cu. ft.)]	428 (15.1)
Passenger capacity	5

\*1346 (53.0) for Super Coupe.

### WARRANTY COVERAGES

Ford of Canada's vehicles are backed by:

- 36 month/60,000 km bumper-to-bumper no deductible warranty
- Corrosion perforation protection warranty on all sheet metal for 6 years/160,000 km (whichever comes first)

### ROADSIDE ASSISTANCE PROGRAM

Every new Ford of Canada car and light truck now includes the assurance of an emergency Roadside Assistance Program during the 3-year/60,000 km bumper-to-bumper warranty period. Help is a toll-free phone call away 24 hours a day — anywhere in Canada or the continental United States — should you ever need any towing assistance, fuel delivery, tire change, a jump start or even help when you're locked out of your vehicle. Ask your Ford of Canada Dealer for complete details on this outstanding Program.



Ford of Canada encourages the use of safety belts and child/infant restraints.

### CUSTOMER SERVICES

Ford of Canada is proud to offer a wide range of customer services including vehicle financing and leasing, replacement parts and after-sale services. See your Dealer for more details.



**Motorcraft**   
QUALITY REPLACEMENT PARTS  
FROM FORD



Ford has chosen to print this catalogue on recycled paper containing 10% de-linked post-consumer materials and uses vegetable inks.

### CIBC FORD VISA CARDS

CIBC FORD VISA Cards are an ideal way to save for your next vehicle.

- Choose from the CIBC FORD VISA Card or CIBC Ford Gold VISA Card — both earn 5% rebates on your everyday CIBC FORD VISA purchases.
- Rebates can be directly applied to the purchase or lease of any new Ford of Canada vehicle.
- Program details and applications are available from your Dealer or by calling toll-free 1-800-465-CIBC.

### ASK YOUR DEALER

Following the publication of this catalogue, certain product changes may have occurred. Ford Motor Company of Canada, Limited reserves the right to make these changes without incurring obligations. Your Dealer is your best source for up-to-date information.

Please Note: Selected photographs in this catalogue depict vehicles with passive restraint motorized systems that are used in U.S. vehicles only. All Ford of Canada vehicles, with the exception of Villager, are equipped with 3-point manual lap and shoulder belt safety restraint systems for outboard passengers.



Quality is Job 1. It's working.