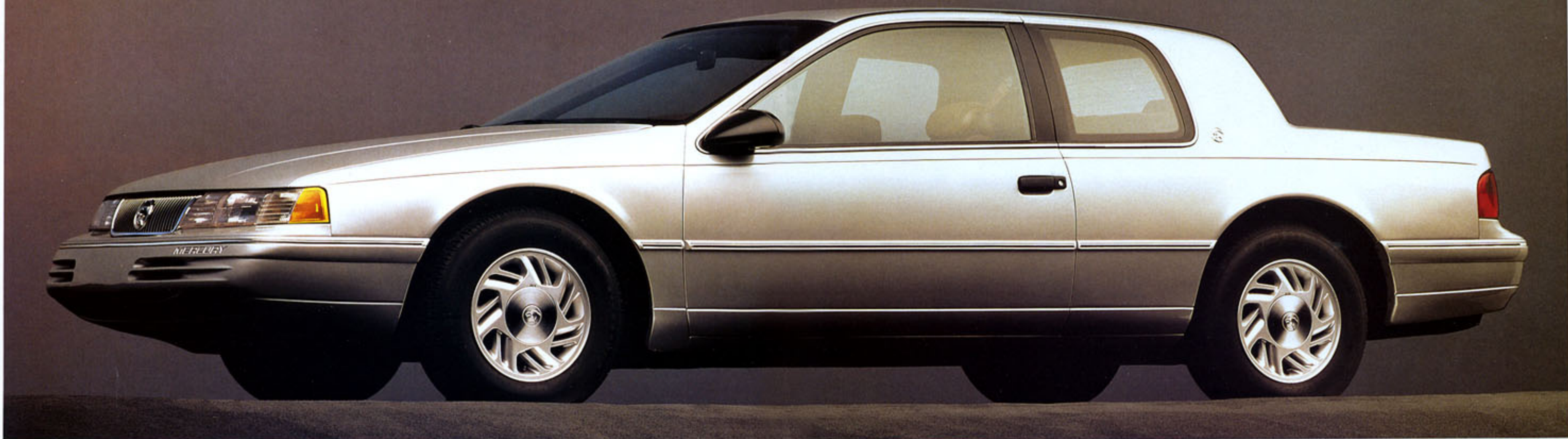




**19**

**92**





*Cougar LS pictured in Silver Clearcoat Metallic with optional cast aluminum wheels.*

## LS EXTERIOR

From its earliest inception, Cougar LS had a clearly focused sense of purpose: To transport you with the utmost ease and comfort, as well as with an extraordinary sense of precise control.

What emerged is a Cougar that is nothing less than a treat to drive. It is also, by a comfortable margin, the roomiest car in

its class. As a corollary to its generous size, Cougar has a longer wheelbase and wider track than any of its competitors, dimensions which contribute to its exceptional smoothness and handling.

Cougar's exterior does more than capture the eye, it also defies the elements. All body panels except for the roof are galvanized on both sides to greatly reduce

the likelihood of rust. The body then undergoes one of the industry's most exacting painting and finishing procedures. Consisting of up to 23 steps, it's your assurance that Cougar is ready to face the future beautifully.

All this painstaking protection surrounds a body that's been shaped by both art and science. With its formal rear window, Cougar

has what must surely be one of the most distinctive automotive profiles.

The force that sets Cougar LS in motion is provided by a sophisticated 3.8-litre, 140 hp V-6. EEC-IV, a state-of-the-art electronic engine control system, fine-tunes the engine for smooth, responsive power. That power, in turn, is delivered to the driving

wheels via Cougar's four-speed automatic overdrive transmission. Note that in the overdrive mode, engine rpm is reduced by a third for quiet and frugal highway cruising. Also, Cougar is the only car in its class with rear-wheel drive—a feature it shares with many of the world's outstanding driver's cars.

You'll quickly discover that Cougar handles roads

with a high degree of competence. For this, in large part, you can thank its exceptional four-wheel independent suspension. It includes a highly advanced SLA front suspension design—the same as you'll find in sophisticated luxury automobiles. Obviously, we've gone to great lengths to make Cougar an outstanding road car.





*Cougar LS decor with luxury cloth and leather trim in Currant Red.*

## LS

### INTERIOR

Obviously, the hours you spend inside your car represent a considerable part of your life. With Cougar LS, we intend to make that part a pleasure simply by indulging you in every way.

For instance, we meticulously shaped Cougar's bucket seats to be anatomically correct for your comfort. And, since

they're placed inside the most spacious cabin of any car in Cougar's class, room for legs, elbows and shoulders abounds. Specifically, maximum front seat legroom is 1079 mm (42.5 in.), hiproom is 1463 mm (57.6 in.) and shoulder room is 1501 mm (59.1 in.). Also, the front seat adjustment provides for 218 mm (8.6 in.) of travel

rather than the usual 127 mm (5 in.).

And there's not just generous room for people, but also for storage. In addition to a sizable glove compartment, Cougar LS offers additional concealed storage in the centre console bin.

In the rear compartment a pull-down centre armrest offers comfortable

separation when two are seated. Rear passengers are further comforted by thoughtful rear seat heat ducts.

Adding further to the civilized environment offered by Cougar LS, air conditioning is included as an item of standard equipment. So, also, is a four-speaker stereo radio with digital clock. And there

are three other choices of audio equipment available.

We even cater to your preferences by offering three different instrument panels, including one with an optional performance cluster and another with an electronic readout.

Several even more basic engineering factors serve to help protect Cougar's passengers. Front and rear

sections of the vehicle are designed to absorb maximum energy upon impact. The roof structure is engineered to support more than 1½ times the car's total weight and the doors are equipped with steel guard beams.





## XR7 EXTERIOR

This is what happens when the idea behind Cougar reaches its ultimate expression. Cougar XR7. A car in which the luxuries seem limitless. And also, a car with the power, suspension and braking technology to put you in one of the most enviable driver's seats on the road.

Of all a car's qualities, its power is probably the most important in determining its character. And nothing defines the Cougar XR7 more clearly and forcefully than the 5.0-litre High-Output V-8

murmuring beneath its hood.

With its functions managed for efficiency by the EEC-IV engine control, this electronically fuel-injected engine delivers 200 horsepower at 4,000 rpm and 275 foot-pounds of torque (SAE net) at 3,000 rpm. But mere numbers can only hint at the commanding presence of this powerplant on the road.

Sheer power, however, must be surrounded by the technology required to tame and control it. Here again, Cougar XR7 displays the results of superb engineering.

Its computer-controlled four-wheel independent suspension, for instance, literally reads both road and driving inputs through its sensors to provide a firmer or softer suspension damping for optimum ride and handling. (You may also select a firm suspension setting at the touch of a switch.) Another factor helping to keep the driving wheels wedged to the road is our Trac-Lok rear axle which works to minimize wheel spin on slick surfaces.

To further increase your control, XR7's speed-

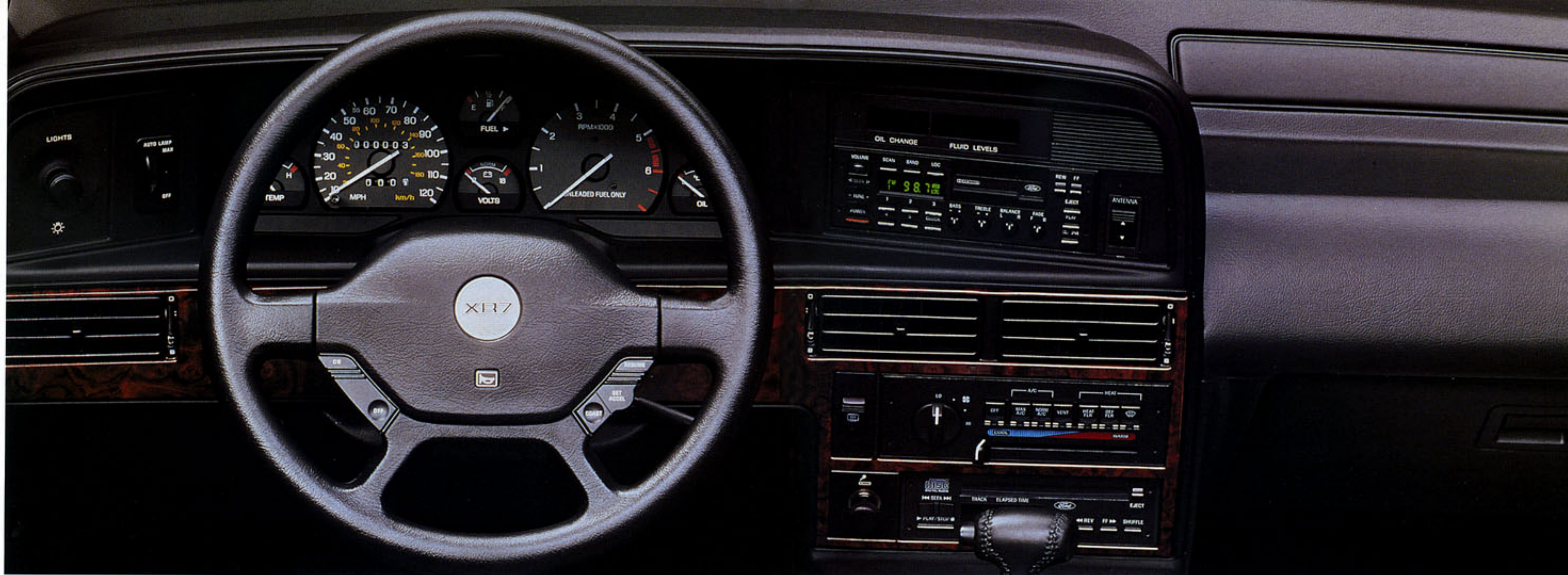
sensitive power steering reduces its power assist in subtle increments as road speed increases. So you have greater road "feel" at highway speeds, while retaining full power assist for parking and low-speed manoeuvres. The list of technology seems to go on and on. Including a noteworthy feature that's fast becoming a hallmark of exemplary driver's cars: anti-lock brakes. By keeping the wheels at the threshold of lockup during braking, this system helps reduce stopping distances on many



slippery road surfaces. It also helps the driver maintain steering control during hard braking.

*Cougar XR7 pictured in Black Clearcoat. Some features shown may be optional.*





## XR7 INTERIOR

What you're looking at here is the instrument panel of a Mercury Cougar XR7. And what's looking back at you is one of the most communicative clusters of gauges to be found in any car on the road. Even though they're shown here in much smaller size than they'd appear to you from behind the wheel, the analog dials are, as you can see, eminently readable.

This panel not only keeps you constantly updated on your XR7's vital functions, but also, with the available Diagnostic Maintenance Monitor, tells you when fuel, washer fluid, coolant and oil levels are low. And

even alerts you when it's time to change the oil. No wonder Cougar XR7 drivers feel that they're among the world's privileged few.

Now if everything before you looks extremely inviting and driver-friendly, that's because it was scientifically designed to be just that. Exhaustive studies involving reach, eye/hand movement, field of vision and other driver functions formed the basis for the design and placement of instruments and controls. For example, power door lock and window switches are shaped so that they can be operated by touch alone,

without moving your eyes from the road. Note also that the buttons for the optional fingertip speed control are located on the steering wheel itself for easy driver access.

However, this car does much more than just please drivers. It surrounds you with countless luxuries, large and small, that show a thorough and thoughtful concern for your ease and comfort. Map pockets in the seat backs, for instance. There's even an available automatic day/night mirror that reduces glare by electronically changing the reflectivity of its surface,

rather than by mechanically "flipping" the angle of the mirror. And for those times when you may wish to increase your car's carrying capacity without eliminating all of the rear seat passenger room, you can order your Cougar XR7 with a 70/30 split-folding rear seatback. This permits you to fold the smaller section down for carrying long items such as skis, while still retaining rear seating for two. Or, of course, you can fold both seatbacks down for maximum carrying capacity.

As you might expect in a car of this calibre, we gave a high priority to the

excellence of the audio entertainment systems. In fact, you can actually choose from four stereophonic sound packages: There's the standard, but far from commonplace, electronic AM/FM

four-speaker stereo radio. Then there's the optional AM/FM stereo radio with cassette player. And for the purist, we offer High-Level and Ford JBL sound systems. At the heart of the Ford JBL

system is a four-channel amplifier developing 145 watts RMS. Both the High-Level and Ford JBL systems are available with a superb digital audio disc player.



*Cougar XR7 interior pictured with optional Ebony leather trim.*



## PREFERRED EQUIPMENT PACKAGES AND OPTIONS

Note: Package content is subject to change. X = Included in package S = Standard O = Optional	LS	LS Decor	XR7
	381A	385A	391A
3.8L SEFI V6 engine	S	S	-
5.0L HO SEFI V8 engine	-	- ✓	S
4 speed automatic overdrive transmission	S	S	S
Manual air conditioning	S	S	-
Front floor mats	X	X	X
Light Group: includes dome/map light, instrument panel courtesy lights, engine compartment light and dual illuminated visor mirrors	X	X	X
Electronic AM/FM stereo radio with cassette and clock	X	- ✓	-
Speed control/Tilt steering	X	X	S
Leather-wrapped steering wheel	X	X	-
Styled sport wheel covers	X	-	-
Interior decor group	-	X	-
Keyless entry system	-	X	O
Power Lock Group: power door locks, remote fuel-filler door release and power decklid release	O	X	S
High-level AM/FM cassette radio: AM stereo, FM stereo, cassette, clock, upgraded front/rear speakers and separate power amplifier	-	X	X
6-way power driver's seat	O	X	S
Cast aluminum wheels	O	X	S
Electronic automatic temperature control	-	O ✓	X
6-way power driver and passenger seats	O	O	X
Power radio antenna	-	X	X
P205/70R15 BSW all-season tires	S	S	-
P225/60ZR16 BSW all-season tires	-	-	S
P225/60ZR16 BSW handling tires	-	-	O
Anti-lock braking system	O	O	S
Anti-theft system	O	O	O
Front cornering lamps	O	O	O
Diagnostic maintenance monitor: adaptive oil change indicator, low fuel, oil, coolant and washer fluid lights	-	O	O
Electronic instrument cluster	-	O	-
Headlamp Convenience Group: automatic on/off/delay system and automatic day/night rearview mirror	O	O	O
Engine block immersion heater	O	O ✓	O
Illuminated entry system	O	O	O
Dual illuminated visor mirrors	O	O	O
Power moonroof: includes dual reading lamps, pop-up air deflector, sliding sunshade and rear tilt-up feature	O	O ✓	O
Radio credit option	O	-	-
Compact digital disc player	-	O	O
Ford JBL audio system: high-level AM/FM cassette, unique 4-channel premium amplifier with 150 total watts RMS and eight upgraded speakers plus sub-woofer	-	O ✓	O
Split fold-down rear seat	-	-	O
Cloth and leather individual seat trim	-	S	S
Cloth individual seat trim	S	-	-
Leather individual seat trim	-	O ✓	O

## COLOURS AND TRIMS

Exterior Paint Colours	Interior Trim Colours				
	Titanium	Crystal Blue	Currant Red	Mocha	Ebony
<b>Cougar LS</b>					
Oxford White	■	■	■	■	■
Caymen Green Clearcoat Metallic* X				■	■
Mocha Frost Clearcoat				■	■
Electric Red Clearcoat Metallic	■			■	■
Bright Red Clearcoat	■			■	■
Dark Plum Clearcoat Metallic* X				■	■
Crystal Blue Frost Clearcoat	■	■			■
Twilight Blue Clearcoat Metallic	■	■			■
Black Clearcoat	■	■	■	■	■
Opal Grey Clearcoat Metallic*	■		■		■
Silver Clearcoat Metallic*	■	■	■		■
<b>Cougar XR7</b>			Titanium	Mocha*	Ebony
Mocha Frost Clearcoat*				■	■
Electric Red			■	■	■
Black Clearcoat			■	■	■
Silver Clearcoat Metallic*			■	■	■
Oxford White			■	■	■

\*New for 1992

## MAJOR STANDARD FEATURES

### LS

3.8L V-6 engine with sequential multiple-port electronic fuel injection, 140 horsepower and a 9.0:1 compression ratio  
Automatic overdrive transmission  
Deluxe colour-keyed 3-point front and rear lap/shoulder belts for outboard passengers  
Power rack-and-pinion steering  
Power front disc/rear drum brakes  
Low profile aerodynamic halogen headlamps  
Stamped steel 15" x 6" wheels, luxury wheelcovers and P205/70R15 BSW steel-belted all-season radial tires  
Full-width wraparound taillamps with vertical laser stripe  
Four-spoke luxury steering wheel  
Bodyside protection mouldings with bright insert  
Colour-keyed soft door trim with lower carpeting  
Reclining 40/40 individual bucket seats with luxury cloth  
Dome, luggage compartment, ashtray and driver's footwell lights  
Air conditioning  
Tinted glass  
Electronic AM/FM stereo radio with 4 speakers and clock  
Power windows  
Interval windshield wipers  
Daytime running lights  
Heavy duty battery  
Electric rear window defrost  
Illuminated entry system and convenience lights  
Illuminated visor mirrors  
Rear seat courtesy lights  
Dual black power outside mirrors

### LS Decor

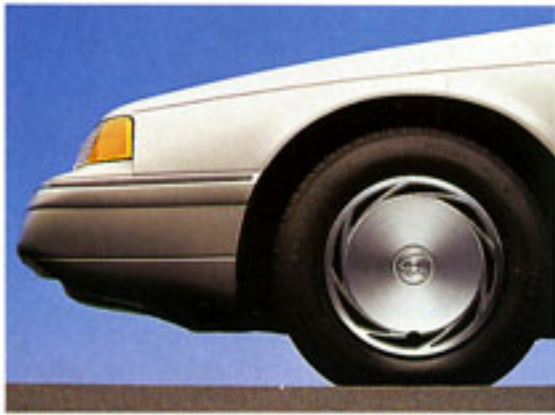
Sport analog instrument cluster with tachometer  
24 ounce carpeting  
Luxury cloth and leather seat trim  
Speed-sensitive power steering (with 5.0L engine only)

### XR7 (over LS)

Electronic speed-sensitive, variable-assist rack-and-pinion power steering  
Unidirectional 16" x 7" cast aluminum wheels and P225/60ZR16 all-season BSW tires  
Body-colour power mirrors  
Luxury level door trim and carpeting  
Power lock group  
Luxury cloth and leather bucket seats with recliners and 6-way power for the driver  
Electronic AM/FM stereo radio with cassette and clock  
Speed control/tilt steering wheel  
5.0L HO V-8 engine with sequential electronic fuel injection  
Adjustable automatic/firm ride control handling suspension  
Four-wheel power disc brakes with anti-lock braking system  
Fog lamps  
Tapered body-colour bodyside moulding with "XR7 5.0L HO" nomenclature on rear quarter



## AVAILABLE FEATURES: 1992 COUGAR



*Cougar wheel choices, from left: styled sport wheel cover, luxury wheel cover, locking cast aluminum wheel, and unidirectional 16" cast aluminum wheel (standard on XR7).*



*You can choose from the excellent sound systems shown here. From top: standard electronic AM/FM stereo with digital clock, optional AM/FM stereo with cassette and digital clock, optional High-Level AM/FM stereo with cassette, and CD player with music search feature. Also available, the powerful Ford JBL Audio System.*



*Tilt steering wheel*



*Fingertip speed control*



*Illuminated visor mirror*



*Split fold-down rear seat*





Ford Motor Company encourages the use of safety belts and child/infant restraints. If a top tether is needed for a child restraint, an anchor is provided at each rear outboard seating position.

### FORD SAFETY DESIGN FEATURES

Each car is designed with the following safety features for vehicle operation and occupant protection:

- Daytime running lights
- High mount stop lamp
- Two speed or variable speed windshield wipers
- Safety hood latch system
- Glare reduced instrument panel, windshield wiper arms and windshield pillars
- Corrosion resistant brake lines
- Visual and audible safety belt fastening reminders for the driver's seat
- Inside yieldaway rearview mirror
- Impact absorbing laminated safety-glass windshield
- Flame resistant interior materials
- Safety designed coat hooks
- Integral lap and shoulder belts with retractors for outboard occupants of front and rear seats
- Lap belts for centre front and rear occupants
- Inertia shut-off switch for electric fuel pumps

### 36 MONTH/60,000 KM WARRANTY

A new 36 month/60,000 km bumper-to-bumper warranty comes standard on every new Ford and Mercury. No deductible. See your dealer for a copy of this limited warranty.



As part of a commitment to the environment, Ford has chosen to print this catalogue on 50% recycled paper including 10% post-consumer material. And to use vegetable inks – which are more environmentally friendly.

### FORD QUALITY CORROSION PROTECTION AND WARRANTY

Each passenger car is protected with the corrosion protection DuraGuard system. This system is built in at the factory to provide the following corrosion protection:

- Precoated steel on doors, quarter panels, hoods and other selected areas
- Galvanized steel on rocker panels, selected cowl tops and underbody parts
- Vinyl sealer on underside of rear wheel-houses
- Super cleaning process followed by phosphate coating on entire car body
- Electrocoat process to apply corrosion resistant primer paint on entire body
- Aluminized wax sprayed in hard to reach places and door surfaces
- Protective vinyl or urethane coating behind wheel openings and along lower bodyside area.

Ford corrosion warranty covers against corrosion perforation on body sheet metal panels for 6 years or 160,000 km (100,000 miles) whichever comes first. See dealer for details.



Optional Ford extended service plans cover major components on new passenger cars for longer than the vehicles basic warranty. See dealer for details.

### Motorcraft

#### QUALITY REPLACEMENT PARTS FROM FORD

These parts meet the same high standards as those installed in production.



The leasing alternative is available through your dealer. A participating dealer can arrange a lease term, and payments tailored to your personal needs.



Is available to every qualified buyer. Offices located throughout Canada.

### ASK YOUR DEALER

Following the publication of this catalogue, certain changes in standard equipment, options, prices or product delays may have occurred which would not be included in these pages. Ford Motor Company of Canada, Limited, reserves the right to make these changes without incurring obligations of any kind. Your dealer is your best source for up-to-date information.



**Quality is Job 1.**