

1984 Ford Cars

TEMPO • THUNDERBIRD • LTD • MUSTANG
ESCORT • LTD CROWN VICTORIA • EXP



At Ford, Quality is Job 1.

At Ford, quality is our top priority. Nothing ranks higher in the design, engineering, manufacture, sale and service of our cars and trucks.

We're determined to make the finest cars and trucks in the world. No exceptions.

Our product philosophy begins with the vision of a customer—of you—sitting behind the wheel of a new car or truck in one of our dealers' showrooms asking a series of questions about quality.

Does this Ford vehicle have the best quality I can find? Will it give me value and pleasure in use? Will it last? Will I get good service? Can I trust the manufacturer and the dealer?

We know that the answers to those questions will determine whether you buy our product or someone else's car or truck. So that's why quality is really Job 1 at Ford.

Our quality system is based on the concept of preventing quality problems, not merely detecting problems and trying to fix them.

Also, we're committed to an operating philosophy of continuous improvement in quality and every other aspect of our business. There is no upper limit to our quality performance. We believe further improvements are always possible.

And most important, Ford employees are directly or indirectly involved in improving the quality of Ford cars and trucks. We know that our jobs and the success of Ford Motor Company depend on building high quality vehicles that meet your needs and expectations.



Donald E. Petersen
President
Ford Motor Company

A word about this catalog

Some of the equipment shown or described throughout the catalog is available at extra cost.

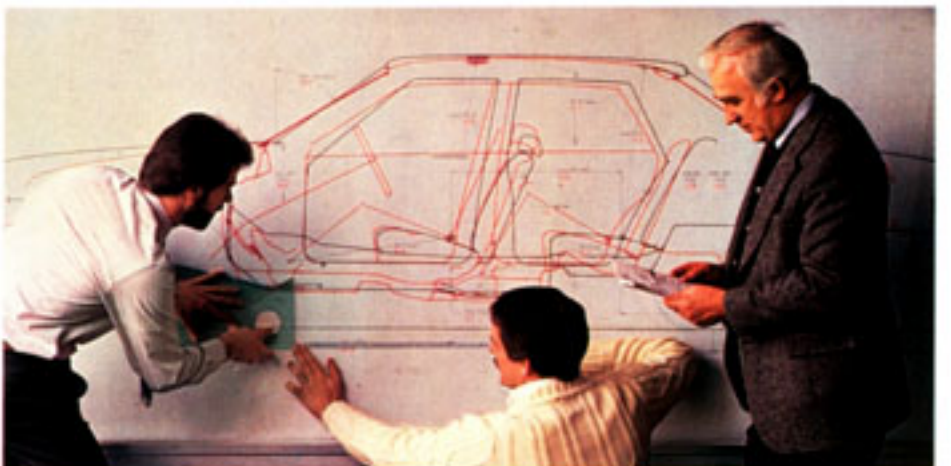
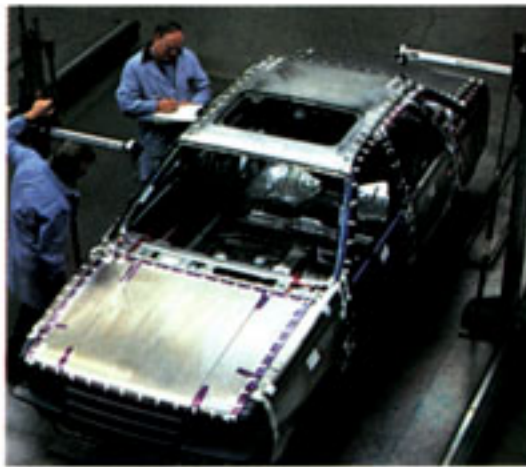


Table of Contents

The Best-Built American Cars	4-5
Ford Tempo	6-7
Thunderbird	8-9
Ford LTD	10-11
Ford Mustang	12-13
Ford Escort	14-15
Ford LTD Crown Victoria	16-17
Ford EXP	18
Gas Mileage & Maintenance	19
Safety Features	20



The Best-Built American Cars

When we say "Quality is Job 1," we are talking about more than a commitment. We are talking about results. An independent survey concluded Ford makes the best-built American cars. The survey measured owner-reported problems during the first three months of ownership of 1983 cars designed and built in the

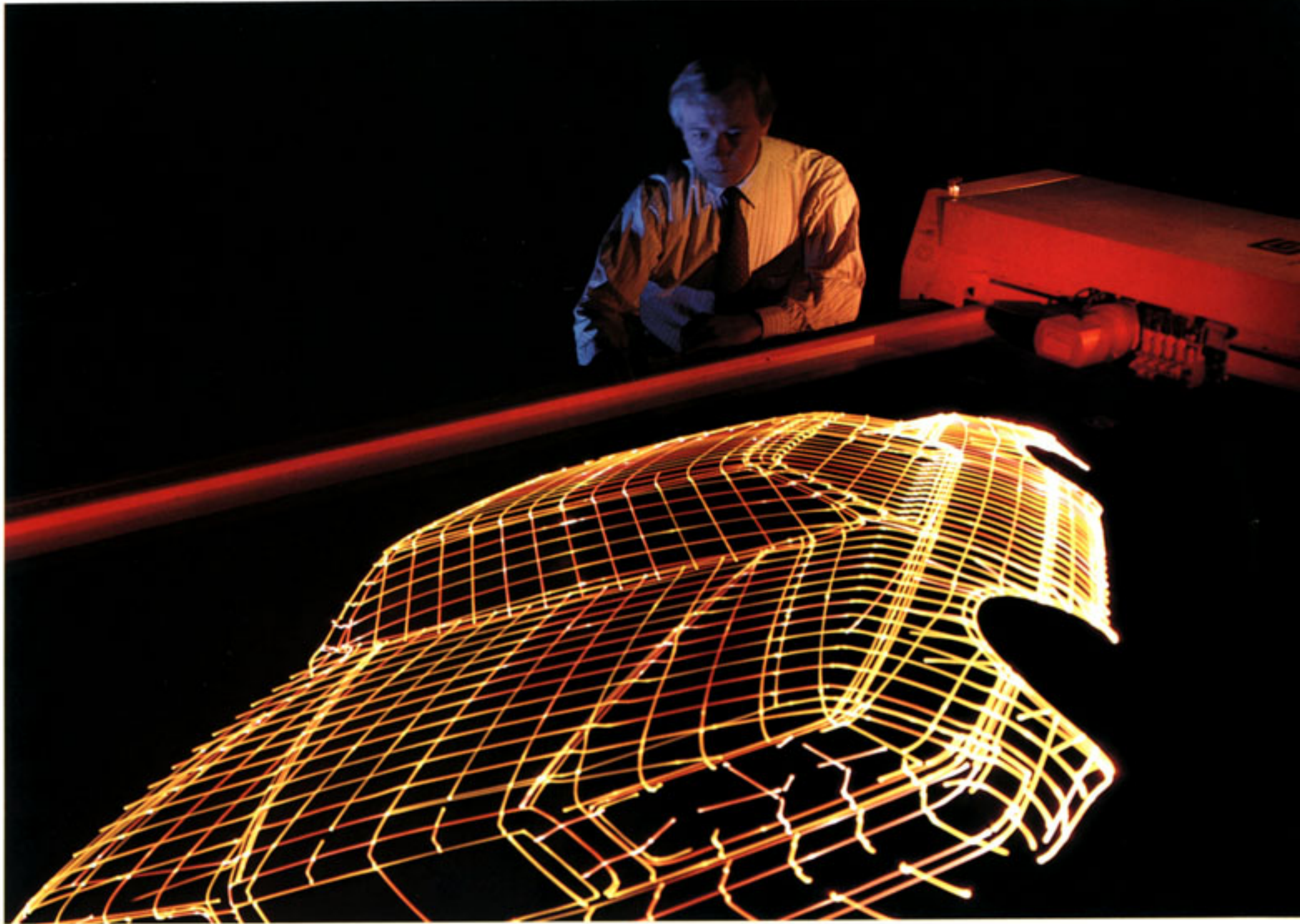
U.S. The commitment continues in 1984.

A quality-built car is the achievement of dedicated people and high technology resources. Advanced computer-aided design and testing techniques. Extensive use of the wind tunnel for aerodynamic efficiency. The precision of robotics and lasers from design to assembly. These and other tools are instrumental in produc-

ing cars that perform to their high engineering standards.

Introducing the 1984 Ford Cars and Wagons

Ford Tempo. All-new aerodynamic 2-door coupes and 4-door sedans in three well-equipped series — L, GL, GLX. Tempo features front-wheel-drive traction along with a smooth riding four-wheel independent suspension system. The



2300 HSC (High Swirl Combustion) 4-cylinder engine with advanced EEC-IV computer technology delivers excellent low-end torque for responsive acceleration with either manual or automatic transaxle. There's also a new 2.0 liter diesel engine.* And Tempo seats five passengers comfortably — a practical feature Tempo shares with larger cars.

Thunderbird. A driver's car in every respect. The new Thunderbird has a highly aerodynamic (.35 C_D) shape, 3.8 liter V-6 performance with electronic fuel injection and SelectShift automatic transmission, a suspension system with gas-filled shocks, and variable ratio power steering. Plus a center console among the many features ergonomically designed for maximum convenience. Thunderbird is available in standard series, elegant élan series, unique FILA Thunderbird, and the extraordinary Thunderbird Turbo Coupe engineered for the pure thrill of driving.

Ford LTD. Roomy sedan and wagon models with exceptional comfort and excellent road handling capability. These trim, aerodynamic LTDs feature reclining split bench front seats in a finely appointed interior. The suspen-

Ford Escort. Since its introduction three years ago, Escort has become the best-selling car in the world, based on worldwide production figures. Escort has front-wheel drive, four-wheel independent suspension, CVH engine design, and 4-passenger interior. Three body styles. And a three-model lineup: practical L series, mid-series GL, luxurious LX, and two exciting GT series with either electronic fuel-injected 1.6 liter engine or the new 1.6 liter EFI turbocharged engine.* A new 2.0 liter diesel powerplant is also available, in Escort L and GL.

Ford EXP. This personal 2-seat coupe is available with one of three special equipment groups. The standard EXP. EXP Luxury Coupe. And the exciting EXP Turbo Coupe. Ford EXP is engineered with front-wheel drive, advanced CVH engine design, four-wheel independent suspension, plus rack and pinion steering. And now, EXP features a sporty bubbleback rear hatch window.

Ford LTD Crown Victoria. Few cars on the road today match LTD Crown Victoria in riding comfort, quiet, and 6-passenger capacity. It is engineered with solid body-on-frame construction, full coil spring suspension system, and standard electronic fuel-injected 5.0 liter V-8 power with Automatic Overdrive transmission. LTD Crown Victoria is available in 2-door and 4-door sedans, and two spacious wagon models — LTD Crown Victoria and Country Squire.

* Delayed availability. See your Ford Dealer for details.

sion system is equipped with gas-filled shocks that smooth out bumps and help the all-season steel-belted radials grip the road. The Ford LTD. Comfort and capability in standard and Brougham series sedans and LTD wagon.

Ford Mustang. There's a Mustang designed for everyone, equipped to the needs of today's sports-minded driver. The standard L series and the deluxe LX with economical 2.3 liter engine in 2-door coupe or versatile 3-door hatchback. The 5.0 liter HO V-8 Mustang GT, 2.3 liter Turbo GT,* and the exhilarating new Mustang SVO turbo at the high performance end of the line. And, this year, Mustang offers convertible models in LX, GT and Turbo GT versions.



1984 Ford Tempo

The new Ford Tempo is engineered with front-wheel drive, an efficient 2300 HSC engine,* four-wheel independent suspension — all in a space-efficient car that seats five comfortably. The Tempo comes in 2-door coupe and 4-door sedan, in three well-equipped series.

Tempo GLX

The top-of-the-line Tempo, with all-cloth trim front reclining seats. The rear seat back is specially contoured for comfort. Doors have padded cloth trim panels (vinyl with optional vinyl seat upholstery) and carpeted lower sections. Floor carpeting is thick cut pile. The luggage compart-

ment is carpeted. And GLX offers the convenience of remote-control outside mirrors, trip odometer, overhead swivel map light, passenger assist handles, plus all the features standard in the GL series.

Tempo GL

The mid-series Tempo is equipped to satisfy almost anyone's needs. Standard reclining front seats have all-cloth seating surfaces and carpeted lower facings. Cloth-covered sun visors have vanity mirrors. Interval windshield wipers, electronic digital clock and luxury sound insulation. Rear seat ashtrays, protective bodyside moldings and luxury wheel covers. Plus all the features of the Tempo L series.

Tempo L

The L series is equipped with power front disc brakes, halogen headlamps, and all-season steel-belted radials. Plus a range of features that includes front seat back recliners, storage bins in the full-length mini-console and front door panels, a new A-frame steering wheel, day/night rear-view mirror, and more. A light on the instrument cluster signals the right moment to upshift for optimum fuel economy (manual transaxle only).

*See Gas Mileage on page 19.

Tempo GL reclining front seats. Some items shown may be optional.



Instrument panel is ergonomically designed for driver convenience. Some items shown may be optional.

Above Right: Tempo L 2-Door Coupe

Below Right: Tempo GLX 4-Door Sedan shown with optional TR-type cast aluminum wheels and bumper guards.

Below: Tempo GL 4-Door Sedan shown with optional styled steel wheels.







Thunderbird

In this new Thunderbird, design and engineering create pure form, pure function. It's a Thunderbird for those who really love to drive. There are four exciting Thunderbirds, each a unique driving experience.

Thunderbird

Fully equipped in the Thunderbird tradition of elegance and comfort. The individually reclining front seats are upholstered in knit cloth. The list of conveniences includes an illuminated console with flocked interior and removable litter bin, carpeted package tray, trip odometer, and an illuminated quartz sweep-hand clock. The large, deep-well trunk has a low liftover height for easy loading and unloading. In Thunderbird's standard power-team is a 3.8 liter EFI V-6 with SelectShift automatic transmission. Power steering and brakes are also standard.

Thunderbird Turbo Coupe

A world-class touring car engineered for the pure thrill of driving. The 2.3 liter electronic fuel-injected turbocharged engine with 5-speed transmission generates 145 horsepower at 4,600 rpm (SAE standard J 1349). Articulated seats, AM/FM stereo,

Above Left: Thunderbird Turbo Coupe



Turbo Coupe articulated seats. Some items shown may be optional.

diagnostic warning lights and much more are standard. Outside, the Turbo Coupe is distinguished by its front fascia with integral air dam and fog lamps and its charcoal-accented trim.

Thunderbird élan

This Thunderbird features everything from velour upholstery and dual-illuminated visor vanity mirrors to electronic AM/FM stereo search radio, electronic instrument cluster and diagnostic warning lights. Plus power door locks and decklid release, power side windows, tilt steering wheel and more.



Thunderbird

A unique Thunderbird inspired by the world-famous active leisure wear. The exterior features a special Tu-Tone paint and tape stripe treatment and Goodyear Eagle HR performance tires on color-coordinated cast aluminum wheels. The interior is equally distinctive: Oxford White articulated seats with leather seating surfaces in a special FILA grain. A charcoal suede-style fabric seat trim is also available. Inside and out, FILA is a special example of Thunderbird luxury and comfort.

Below: FILA Thunderbird shown with optional pivoting front vent windows.



Thunderbird élan instrumentation. Some items shown may be optional.

Below Left: Thunderbird élan shown with optional black sidewall tires.

Ford LTD

These trim, aerodynamic Ford sedans and wagons have been designed for comfort and engineered for superb ride and handling.

Ford LTD Brougham

A luxury coach roof immediately distinguishes this elegant LTD series. The Brougham

LTD Brougham interior with optional leather seating surfaces.



interior has luxurious all-cloth upholstery, door trim panels and thick carpeting. The luggage compartment is fully carpeted. And the Brougham comes with a long list of conveniences: electronic digital clock, automatic parking brake release, illuminated entry system, dual illuminated visor vanity mirrors, all features in the Light Group (optional on other series) and more.

Ford LTD

The standard LTD is spacious and comfortable. It has individually reclining front seats, or full-width flight bench seat available at no extra cost. Conveniences include column-mounted controls, trip odometer, front door storage bins, left-hand remote-control mirror and more. Plus power brakes and steel-belted radial tires. The 2.3 liter 4-cylinder engine with EEC-IV computer and SelectShift automatic is standard. It is available with a propane fuel option.

Ford LTD Wagon

This Ford wagon provides a larger cargo volume index than any other wagon in its class (excluding other Ford cars). LTD wagon is powered by a standard 3.8 liter V-6 engine with SelectShift automatic transmission. Engine functions are monitored and controlled by Ford's advanced EEC-IV computer for consistent performance and efficiency under all operating conditions. The LTD wagon also comes with a lockable rear storage compartment, carpeted cargo floor and cargo area light — all in addition to the comforts and conveniences standard in the LTD sedan.



LTD Wagon shown with Squire Option, optional luxury wheel covers, white sidewall tires and deluxe luggage rack.

LTD instrumentation is designed with driver convenience foremost in mind. Some items shown may be optional.



Above Right: LTD 4-Door Sedan shown with optional styled road wheels and rear bumper guards.

Below Right: LTD Wagon shown with optional rear bumper guards and white sidewall tires. LTD 4-Door Sedan shown with optional right-hand remote-control mirror, bumper rub strips, luxury wheel covers, and white sidewall tires.





Ford Mustang

Little in the way of fanfare is needed to announce the new Mustangs for 1984, except to say they are "more Mustang" than ever before. There's a Mustang designed for every need, and engineered for any kind of road.

Mustang SVO

An all-new Mustang born of Ford's longtime experience in motorsports. The machine speaks for itself, with many components not found on any other production car in America. A computer-controlled 2.3 liter OHC engine with port-type electronic fuel injection, turbocharger and inter-cooler. Four-wheel disc brakes. Adjustable gas-filled Koni® shocks. Plus sports performance bucket seats, 16-inch wheels and tires, and a lot more.

Mustang GT and Turbo GT

There are two. "The Boss" is powered by a 5.0 liter High Output V-8 teamed with a 5-speed manual transmission. The Turbo GT combines 2.3 liter 4-cylinder efficiency* with on-demand electronic fuel-injected turbo performance.** Both come with special suspension packages and performance tires on cast aluminum wheels, full console, and a wide range of other sport features.

Mustang LX

Available in 2-door coupe, 3-door hatchback, or convertible. With reclining low-back front bucket seats in cloth upholstery, dual remote-control mirrors, visor vanity mirrors, luxury carpeting, LX door trim with a map pocket for the driver, special sound insulation, and much more. The LX is Mustang deluxe in every sense.

Mustang L

The standard series has the economical* 2.3 liter engine, strut-type front suspension with stabilizer bar, rack and pinion steering, halogen headlamps, LH remote-control mirror, front bucket seats and many other features. Sportiness and practicality — the standard Mustang has plenty of both.

Mustang Convertibles

The Mustang GT and Turbo GT Convertible.** And the LX Convertible with electronic fuel-injected 3.8 liter V-6 and Select-Shift automatic transmission. Mustang convertible models provide room and comfort for four passengers, have a power retractable top, roll-down quarter windows, and a dual-function rear glass window that folds

with the top or can be zipped out when the top is up for extra ventilation.

* See Gas Mileage on page 19.

** Delayed availability. See your Ford Dealer for details.

Note: Front air dam is dealer-installed.

Below: Mustang GT Convertible shown with optional cast metric aluminum wheels and TRX tires. Front air dam is dealer-installed.



Mustang GT instrumentation. Some items shown may be optional.



Mustang L reclining bucket seats. Some items shown may be optional.

Above Left: Mustang L 3-Door shown with optional cast metric aluminum wheels and TRX tires.

Below Left: Mustang SVO

Ford Escort

Five well-equipped models. Three roomy 4-passenger body styles: 2-door hatchback, 4-door hatchback, and 4-door wagon. Ford's World Car offers a world of choices.

Escort GT and Turbo GT

The 2-door GT is powered by the 1.6 liter electronic fuel-injected CVH engine with 5-speed manual transaxle. Under the

Escort LX reclining bucket seats. Some items shown may be optional.



hood of the Turbo GT is the new 1.6 liter electronic fuel-injected turbocharged engine and 5-speed gearbox (to be available around February, 1984). Both series are equipped with special suspension packages, TR-type wheels (aluminum wheels on Turbo GT) and Michelin TRX tires. Plus fog lamps and a wide range of conveniences and sport appearance features.

Escort LX

Available in 4-door hatchback and wagon. This Escort is equipped with the TR suspension, TRX tires and TR-type styled steel wheels. Powerteam is the 1.6 liter EFI with 5-speed manual transaxle. Inside, the LX has low-back reclining bucket seats, digital clock in an overhead console, remote liftgate release and locking fuel filler door among its many comforts and conveniences. The LX is as personal as it is sporty. See your Ford Dealer for LX Wagon availability.

Escort GL

This series has low-back reclining front bucket seats. Visor vanity mirrors. Remote-control locking fuel filler door and remote liftgate release. These conveniences and more along with the standard, economical 1.6 liter CHV engine* with 4-speed manual overdrive transaxle. This year, a new 2.0 liter diesel option is available in both Escort GL and L series.

Escort L

Advanced technology, design and engineering are just the beginning. Escort has a long list of standard features that includes a new driver-oriented instrument panel with side window demisters, P-metric all-season radial tires, halogen headlamps, maintenance-free battery, body-contoured reclining high-back bucket seats, deluxe belts with comfort regulators, removable package tray and more. The Escort is as practical as it is fun to drive, which accounts for its tremendous success.

Above Right: Escort GT shown with optional TR-type aluminum wheels and pivoting front vent windows.

Below Right: Escort GL 4-Door shown with optional dual remote-control sport mirrors.



Escort GT instrumentation. Some items shown may be optional.

Standard dual-fold split rear seat (all series except Escort L)

Right: Escort LX Wagon. Some items shown may be optional.



*See Gas Mileage on page 19.





Ford LTD Crown Victoria

The LTD Crown Victoria shares an essential quality with fine cars around the world. This 6-passenger automobile is truly a pleasure to drive. The LTD Crown Victoria has few equals in the field of full-size cars. The proof lies in the LTD Crown Victoria's generous room for passengers, space for luggage or cargo, exceptional riding comfort, and the Super Luxury quietness for which the name LTD is famous.

LTD Crown Victoria sedans and wagons continue in 1984 with standard V-8 power — a 5.0 liter electronic fuel-injected engine teamed with Ford's innovative Automatic Overdrive transmission. This power team provides a trailer towing capability up to 5,000 pounds with the optional Heavy-Duty Trailer Towing Package.

Full-Size Sedans

LTD Crown Victoria 2-door and 4-door sedans are luxuriously appointed. The flight bench seat with dual recliners is upholstered in soft cloth and vinyl. AM/FM stereo sound system is standard. Carpeting is thick 16-ounce cut pile. Also standard are a left-hand remote-control mirror, quartz sweep-hand clock, plus courtesy lights in the ashtray, glove box

Above Left: LTD Crown Victoria 4-Door Sedan shown with optional Brougham roof treatment, cast aluminum wheels, front cornering lamps, rocker panel moldings, electric rear window defroster, RH remote-control mirror, and bumper rub strips.

Below Left: Country Squire Wagon shown with optional cast aluminum wheels, front cornering lamps, rocker panel moldings, right-hand remote-control mirror, bumper rub strips, vinyl insert bodyside moldings, electric rear window defroster, and deluxe roof-mounted luggage rack.

and in the spacious 22.4-cu. ft. deep-well trunk.

Full-Size Wagons

This year there are two. The steel-side LTD Crown Victoria and the classic Country Squire with woodtone paneling. Both have the luxury and comfort of the sedan models. Plus exclusive wagon features such as Ford's innovative 3-Way Magic Doorgate and two lockable storage bins in the spacious 89.5-cu. ft. cargo

area. And there are some special options: Dual Facing Rear Seats for 8-passenger seating, a roof-mounted Deluxe Luggage Rack, and DuraWeave upholstery which looks, feels and breathes like cloth, yet cleans and wears like vinyl.

Below: LTD Crown Victoria 2-Door Sedan shown with optional right-hand remote-control mirror, rocker panel moldings, and bumper rub strips.



Interior Luxury Group shown with optional leather seating surfaces and special sew style.

Trailer towing capacity up to 5,000 pounds with optional Heavy-Duty Trailer Towing Package.



Ford EXP

The personal 2-seat Ford EXP is designed and engineered for the pure enjoyment of driving.

EXP is available in three special equipment groups — the standard EXP, EXP Luxury Coupe, and EXP Turbo Coupe. Each has front-wheel-drive traction, a four-wheel independent suspension, advanced CVH engine design. And this year, EXP fea-

EXP Luxury Coupe

AM/FM stereo, 4-way adjustable driver's seat, console, dual remote-control mirrors, electric rear window defroster and cast aluminum wheels are among the features included in this personal luxury coupe.

EXP Turbo Coupe

The most exciting EXP ever built is powered by the 1.6 liter electronic fuel-injected turbocharged engine with 5-speed manual shift.

The suspension with special components rides on TR-type aluminum wheels. The list of Turbo Coupe equipment also includes power steering, sport performance seats, AM/FM stereo radio with cassette tape player, and much more.

There's more driving fun in a Ford EXP than ever before. Experience it soon in a test drive at your Ford Dealer.



EXP Turbo Coupe

tures the sporty bubbleback rear hatchback window.

Ford EXP

The standard EXP has the 1.6 liter HO (higher-output) engine with 5-speed manual transaxle. Plus reclining low-back bucket seats, a new instrument panel design with storage bin and side window demisters. Tachometer, trip odometer, overhead console with electronic digital clock and courtesy map light, power brakes, P-metric steel-belted radials — these features and more, all standard in EXP.



EXP features a new driver-oriented instrument panel. Some items shown may be optional.

Gas Mileage

1984 EPA mileage estimates were not available at the time this catalog was approved for printing. However, Ford cars are expected to post good mileage ratings as they did last year. As soon as EPA figures are released, your Ford Dealer will be happy to pass them along to you.

Scheduled Maintenance

Ford wants to reduce the frequency and cost of scheduled maintenance to an absolute minimum. Some examples of scheduled maintenance are listed in the individual Ford car line catalogs. Complete maintenance recommendations are provided in the Ford Owner Guide for each car line.

Lifetime Service Guarantee

Participating Ford Dealers are now offering the Lifetime Service Guarantee, which guarantees their work for as long as you own your car. It means that you pay for a covered repair on your Ford car or light truck once — and never again. If it ever has to be fixed again, the repairing dealer will fix it free. Free parts. Free labor. Even if you keep your car a lifetime. It doesn't matter where you bought your car, or whether it's new or used; the work is still covered by the repairing dealer.

This limited warranty covers vehicles in normal use. Items not covered are routine maintenance parts, belts, hoses, sheet metal and upholstery. See any participating Ford Dealer for details.

Ford-Paid Repair Programs After the Warranty Period

Sometimes Ford offers adjustment programs to pay all or part of the cost of certain repairs. These programs are intended to assist owners and are in addition to the warranty or to required recalls. Ask Ford or your dealer about such programs relating to your Ford or Lincoln-Mercury vehicle.

To get copies of any adjustment program for your vehicle or the vehicle of interest to you: Call Ford toll-free at 1-800-241-3673. Alaska and Hawaii call 1-800-241-3711 and in Georgia call 1-800-282-0959. Or write

Ford at: Ford Customer Information System, Post Office Box 95427, Atlanta, Georgia 30347.

We'll need your name and address; year, make, and model vehicle, as well as engine size; and whether you have a manual or automatic transmission.

Technical Service Bulletins

All vehicles need repairs during their lifetime. Sometimes Ford issues Technical Service Bulletins (TSBs) and easy-to-read explanations describing unusual engine or transmission conditions which may lead to costly repairs, the recommended repairs, and new repair procedures. Often a repair now can prevent a more serious repair later. Ask Ford or your dealer for any such TSBs and explanations relating to your Ford or Lincoln-Mercury vehicle.

To get copies of these Technical Service Bulletins and explanations for your vehicle or the vehicle of interest to you: Call Ford toll-free at 1-800-241-3673. Alaska and Hawaii call 1-800-241-3711 and in Georgia call 1-800-282-0959.

Or write Ford at: Ford Customer Information System, Post Office Box 95427, Atlanta, Georgia 30347.

We'll need your name and address; year, make, and model vehicle, as well as engine size; and whether you have a manual or automatic transmission.

Option availability

Some features presented are optional at extra cost. Some options are required in combination with other options. Availability of some models and features described may be subject to production delay. Ask your Ford Dealer for the latest information on options, prices, and availability.

Product changes

Ford Division reserves the right to change product specifications at any time without incurring obligations.

Have you driven a Ford...lately?

A Commitment to Safety

Cars built with a concern for safety are designed and engineered by people who are committed to safety. Safety, like quality, begins as an attitude, a way of thinking that's instrumental in the shaping of a vehicle's structure and components from the drawing board to assembly.

Occupant safety

To help protect passengers in the event of an accident, Ford cars are equipped with numerous safety-design features, including those listed under the category "Occupant protection."

Ford commits enormous resources every year to the development and testing of all car lines and their occupant protection features.

Body structures — front and rear end assemblies, roof and doors — are carefully designed from the start with passenger safety as a primary concern. After they are validated for theoretical soundness, structures are assembled into prototype vehicles and subjected to exhaustive testing in the Crash Barrier Building at Ford's Dearborn, Michigan, Proving Ground.

Thorough evaluations of instrument panel and steering column designs, seats, head restraints and seat belts are also involved in all phases of safety testing.

The Crash Barrier Building has highly sophisticated equipment designed to analyze the impact of crash testing on the prototypes, and to measure the effects of the force on mannequins representing the driver and passengers. As many as 350 crash tests involving cars and trucks are conducted annually.

Operating safety

This term applies to a vehicle's ability, with the aid of the driver, to avoid an accident.

Most important to operating safety are the major chassis systems — the front and rear suspensions, steering and brakes. The performance of these systems is vital to accident avoidance should the driver have to take evasive maneuvers in an emergency.

Ford cars are engineered to do their part — provide suspension and steering systems designed for handling responsiveness and control, as well as a brake system that delivers fast stopping action along with fade resistance.

Of course, it's up to the driver to make the best use of the vehicle's accident-avoidance equipment. This involves driving defensively and reacting in time, and such seemingly small things as regulating the interior heating/cooling system for proper ventilation (to help the driver stay alert) and maintaining the steel-belted radial tires at recommended inflation pressures (to keep them at safe temperatures).

Get it together — Buckle up.

Ford Motor Company strongly encourages all passengers to use their safety belts.

In all Ford cars, front seat lap and shoulder belts are equipped with automatic retractors and tension relievers, so they're very convenient to put on and comfortable to wear. Rear seat positions also have lap belts with retractors.

Ford also urges the use of child and infant restraints, even in states where they are not required by law. Ford's Tot-Guard (for children 20 to 50 pounds) and Infant Carrier (for children up to 20 pounds) are available at all Ford Dealers. These restraint systems are easy to install and meet all state and federal standards. If a child restraint requires a top-tether, Ford cars provide a special anchorage at each rear outboard seating position.

Ford Lifeguard Design Safety Features

Vehicle operation

Safety rim wheels and load-rated tires Split service hydraulic brake system with warning light Corrosion-resistant brake lines Turn indicator lever with lane-changing signal feature Hazard warning flasher Back-up lights Side marker lights Parking lights coupled with headlamps Two-speed or variable speed windshield wipers Windshield washers Outside rearview mir-

ror, driver's side Glare reduced instrument panel, windshield wiper arms, and windshield pillars Uniform transmission shift quadrant with safety starting switch (on all cars equipped with automatic transmissions) Continuously variable control illumination intensity (instrument cluster lighting) Safety hood latch system Function-rated windshield defroster system Impact-resistant front and rear bumper systems

Occupant protection

Safety-designed front end structure Safety-designed roof structure (except convertible) Steel guard rails in side doors Double yoke safety door latches and safety hinges Integral lap and shoulder belts with automatic retractors for front out-board occupants Positive seat belt fastening reminder warning light and buzzer or chime for the driver Lap belts for center front (where three-passenger front seat is provided) and all rear seating positions with retractors for rear out-board occupants Energy-absorbing steering column and steering wheel Energy-absorbing armrests and safety-designed door handles Energy-absorbing instrument panel with padding for right and center (where three-passenger front seat is provided) front passengers Energy-absorbing sun visors Energy-absorbing front seat back tops Self-locking front seat back latches on two-door vehicles Head restraints or high back seats for front out-board occupants Safety glove box latch Inside yieldaway rearview mirror Impact-absorbing laminated safety glass windshield Flame-resistant interior materials Safety-designed coat hooks Safety-designed radio control knobs and push buttons Child restraint tether anchorages (except convertible)

Anti-theft

Locking steering column with key warning buzzer (or chime) reminder (with "Park" interlock or push button for key release) Visible vehicle identification number Separate keys for ignition and door entry

FORD

FORD DIVISION 