

COUGAR XR-7 '82



FROM LINCOLN-MERCURY

XR-7 FOR '82. EXHILARATING!

If this is your first encounter with the Cougar XR-7, be prepared. You're dealing with a car of extraordinary style.

In every crisp line, each sharp engaging angle, you see the mark of a truly personal, highly expressive automobile. A car made not for those who simply know where they're going, but for

those who know exactly how to get there.

To accommodate matters of personal style, two XR-7s are offered this year: XR-7 GS and the luxurious XR-7 LS.

From the commanding front end... up and over the distinctive half-vinyl roof... down to the last sweeping curve of the color-keyed "soft" rear bumpers, the XR-7 is a car that commands attention.

Sleek. Strong. Enthusiastically aggressive. Styled for your special style.

Inside, a stunning new XR-7 environment awaits you. XR-7's seats are upholstered in rich cloth. The same velour-like fabric that is used in the Lincoln Signature Series. For an elegant, uniform look, this rich cloth has also been used to cover the front seat headrests and front- and back-seat armrests. Look for optional power Twin Comfort Lounge seats (shown on pages 6 and 7) with manual passenger recliner. The dual controls allow you and

your passengers to move effortlessly, and individually, in six relaxing directions.

A turn of the key starts the 3.3 liter I-6 engine* humming. Enough power for most. But with the XR-7, you can demand more... and get it.

There's an optional 3.8 liter V-6 engine. Or for more power, get the optional 4.2 liter V-8 engine. Both team up with Automatic Overdrive Transmission. This transmission reduces engine

revolutions per minute by automatically shifting into a fourth overdrive gear. (For more information on this feature see pg. 10.)

Still the XR-7 goes further. The power rack-and-pinion steering and tight turning radius create responsive precision control.

And the advanced, optional Electronic Instrument Cluster takes you and your XR-7 into a futuristic dimension. An entire information center, it features a digital speedometer, electronic fuel gauge,

and electronic digital clock illuminated in a solid black setting.

The XR-7 for '82. From the ground up, it's a car of impeccable design. And pure, exhilarating energy.

Some of the equipment shown may be available only at extra cost and only on specific models. (Please see pages 10 through 13 for information regarding standard and optional equipment.)

**Subject to late availability.*



'82 XR-7 GS in Medium Red with optional flip-up/open air roof.

**XR-7 LS. BEAUTIFUL
SELF-EXPRESSION.**

There is no other car quite like the XR-7 LS. Every sweeping line and aerodynamic angle tells you this car sets a relentless pace.

The contemporary XR-7 look is immediately recognizable. The raised rear deck contributes greatly to the aerodynamic design. It creates a presence that's undeniably of the '80s.

Move in closer. Bold accent stripes and wide bodyside molding create strong

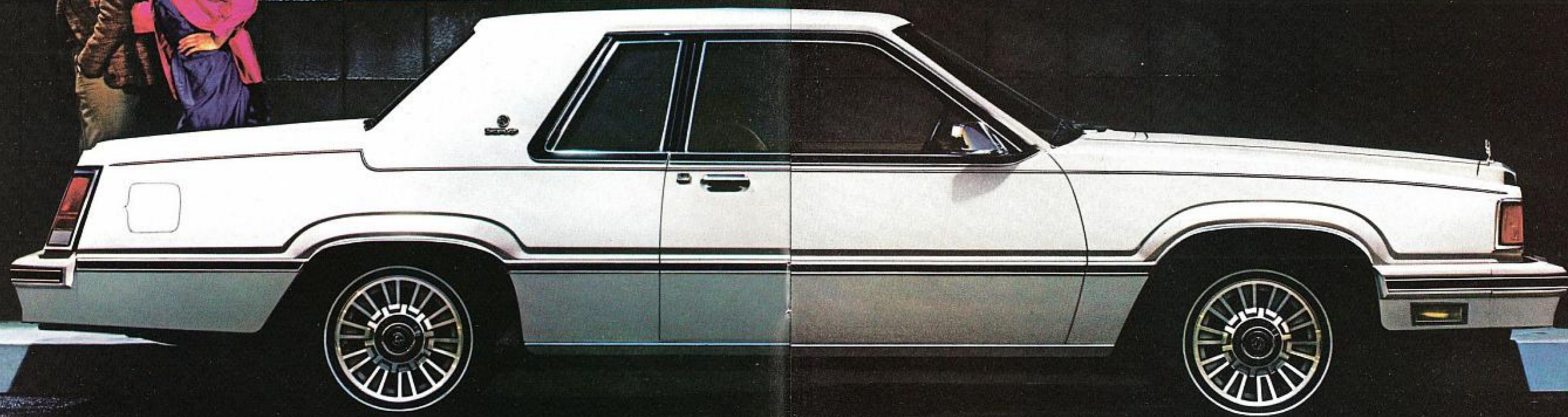
lines of authority. While other standard model features like the padded, half-vinyl roof, dual remote-control outside mirrors, bright LS luxury wheel covers, and the distinctive XR-7 hood ornament heighten the unmistakable aura of the LS.

You can express yourself further by selecting certain options ideally suited to the XR-7 LS. You can choose either a convertible-like carriage roof or the flip-up/open air roof. You may also wish to add the Premium Sound System, available

with any stereo radio including AM/FM cassette or 8-track tape. (A complete listing of radio options is available on page 12.) There's also a sophisticated Keyless Entry System. With this option, a special digital code—known only by you—must

be punched before your doors will open.

Yet, for all its exterior style and beauty, the XR-7 LS enjoys some of its finest moments on the inside. We invite you now to share in these moments, starting with a turn of the page . . .



XR-7 LS in White with optional cast aluminum wheels.

XR-7 LS. EXQUISITE TASTE.

It's difficult to express what every owner of the XR-7 LS feels as he sits behind the wheel. But we can give you an accurate idea of what to expect.

Sit back . . . and relax in cushioned, reclining Twin Comfort Lounge seats, richly covered in soft cloth. The front-seat headrests and front- and back-seat

armrests are also upholstered in matching cloth trim.

For your passenger's convenience, a flip of the visor reveals a hidden vanity mirror—while standard power windows provide both individual and master controls.

Beneath your feet lies sumptuous, cut-pile carpeting. And a smooth, woodtone steering wheel rests comfortably in the crease of your hand.

Certain stylized options allow you to leave your own indelible mark on the LS's interior: leather seating surfaces, fingertip speed control . . . an entire list is printed on page 12.

Furthermore, several optional packages are available which take you totally into a new realm. For instance, the Electronic Instrument Cluster offers an amazing array of "high-tech" instruments: digital speedometer, electronic fuel gauge, and a

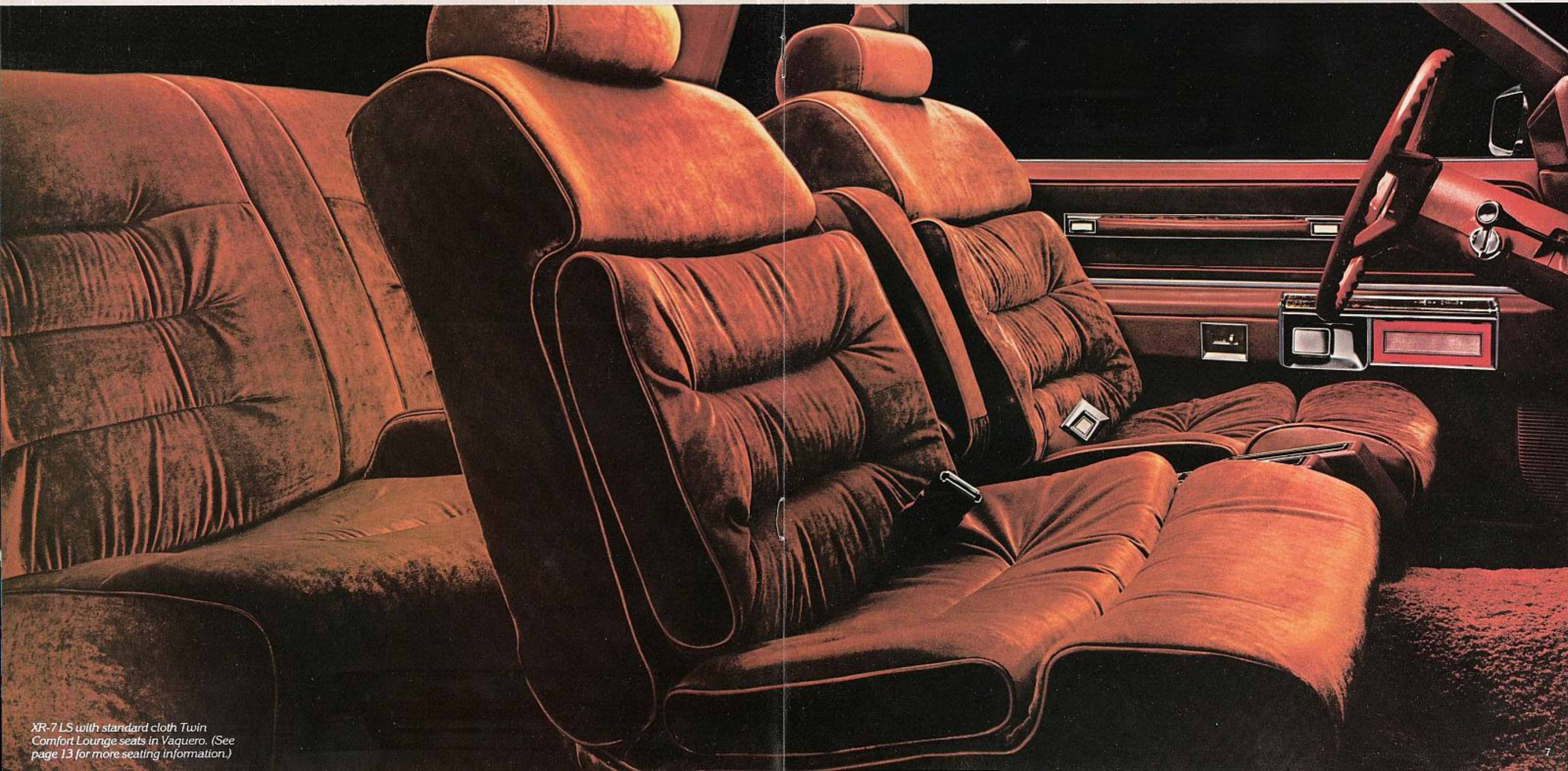
digital clock with day, date, and time readouts.

Or choose the Diagnostic Warning Light System. It alerts you via a flashing light if you're low on fuel or washer fluid; if your low beam headlight, brake light, or taillight is out; if your door is ajar; even if you've accidentally left your headlights on.

The XR-7 LS. It's an exquisite opportunity to take an elegant car . . . and turn it into a beautiful expression of you.



XR-7's optional Electronic Instrument Cluster.



XR-7 LS with standard cloth Twin Comfort Lounge seats in Vaquero. (See page 13 for more seating information.)

XR-7 GS. EXCEPTIONAL STANDARDS.

The XR-7 GS is a car of character, beauty and a wide variety of standard features. For these reasons, and more, it may very well be the XR-7 you've been waiting for.

Included on the GS are beautiful features like the padded rear half-vinyl roof

and distinctive black bodyside molding. Convenient features like the interior hood release and luggage compartment light. And additional features like the dual halogen headlights and steel-belted radial white sidewall tires.

The GS is also equipped with impressive standard instrumentation. Beyond the luxury woodtone steering wheel are an analog clock, AM radio (which

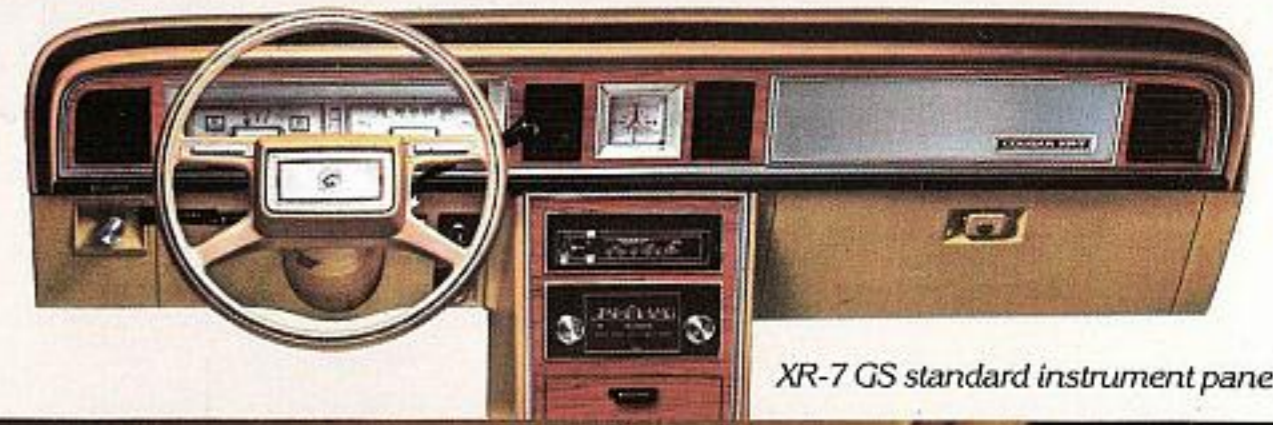
may be deleted for credit), trip odometer, glove box light—even an ashtray light.

Notice, too, how the control levers for wiper/washer, high/low headlight beams, and turn signals are mounted on the steering column for added driver convenience.

Yet, what truly makes the GS so exceptional is the fact that it offers more. More standard equipment in the form of

reclining Twin Comfort Lounge seats tailored in velour-like cloth, door and quarter trim panels with woodtone moldings, and a remote-control outside mirror.

There's also a soft, rear-seat armrest, full wheel covers, and thick cut-pile carpeting. Inside and out, the XR-7 GS is a car to sit in as well as be seen in.



XR-7 GS standard instrument panel.



XR-7 GS in Pastel French Vanilla with optional wire wheel covers.



XR-7 GS with standard cloth Twin Comfort Lounge seats in French Vanilla.

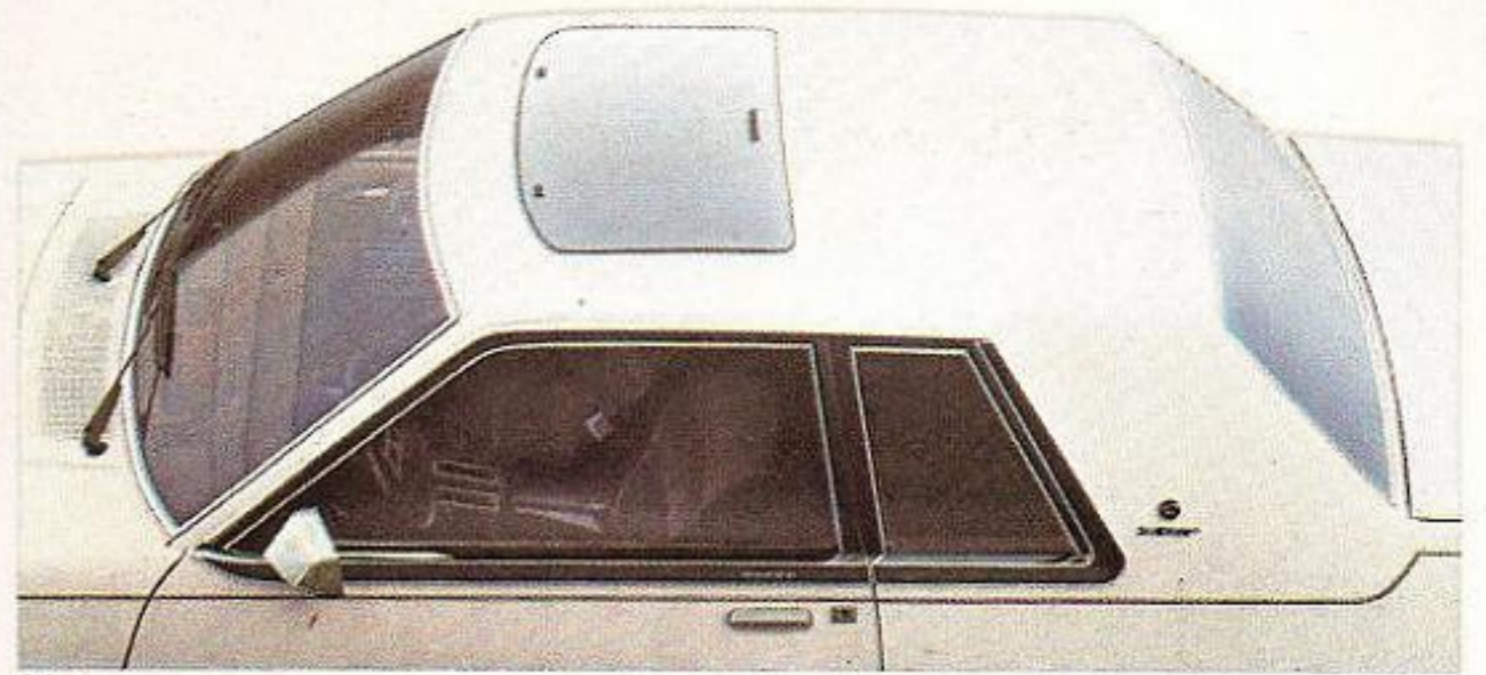
EXCITING OPTIONS.

1. **TRIPMINDER COMPUTER.** Your own Electronic Message Center. The digital clock gives time, date, and day read outs. The rest of the computer measures elapsed driving time, your current and average gas mileage, the average speed of your trip, and the number of gallons consumed.



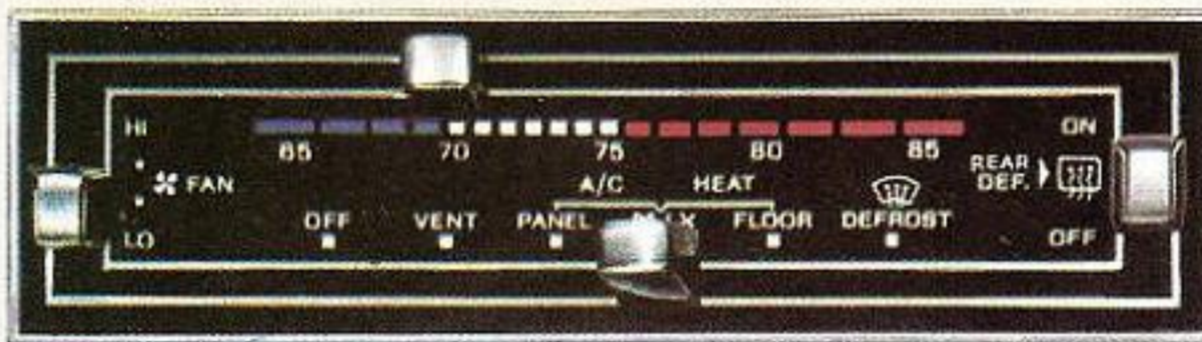
1.

2. **FLIP-UP/OPEN AIR ROOF.** Let the moon, sun, and the stars shine in with this flip-up, removable feature.



2.

3. **AIR CONDITIONING.** Add further comfort to your warm weather driving. Available in manual or automatic temperature controls.



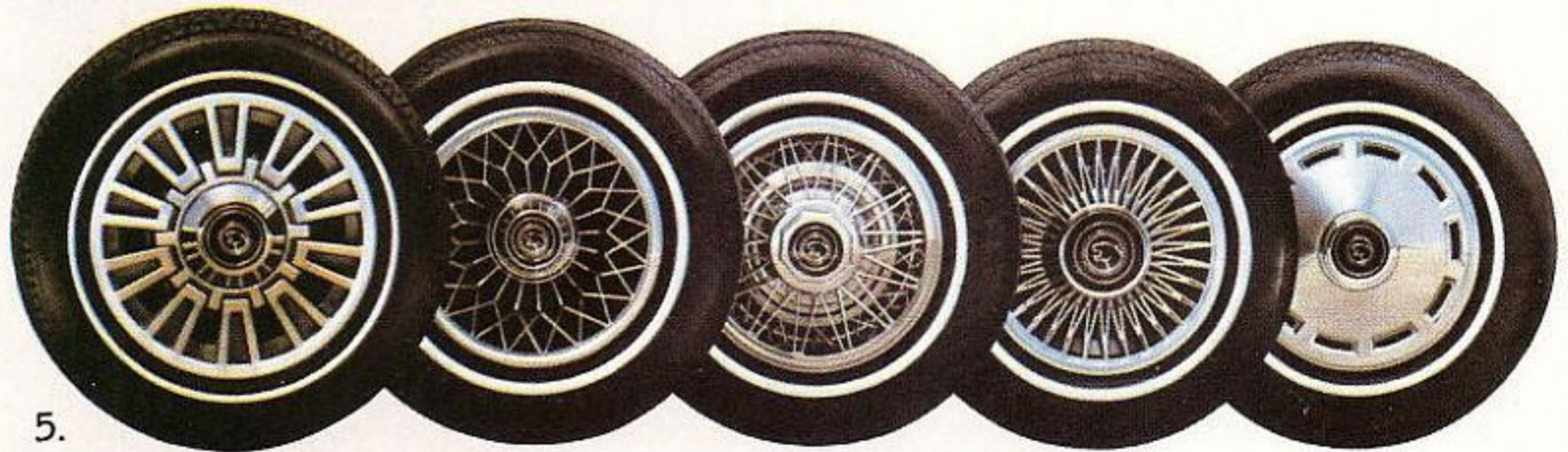
3.

4. **AM/FM STEREO** with 8-track tape (shown here). It's one of a number of superb radio choices in the XR-7. (See page 12 for further information.)



4.

5. **WHEEL COVERS.** Add an individual, crowning touch to your XR-7. Choose from (left to right): cast aluminum wheels; luxury LS wheel covers (standard on XR-7 LS); wire wheel covers; luxury GS wheel covers; and full wheel covers (standard on XR-7 GS).



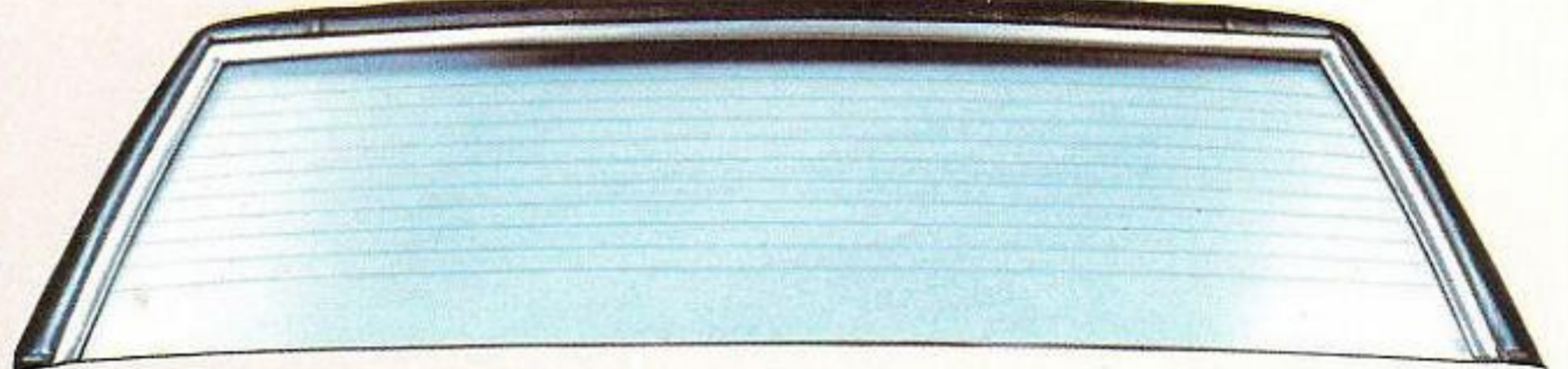
5.

6. **AUTOMATIC OVERDRIVE.** Improve highway fuel economy with this unique transmission. When your car reaches cruising speed, it automatically moves into the fourth automatic overdrive gear, reducing engine revolutions per minute and increasing your fuel efficiency. (Standard with optional 3.8 liter V-6 and 4.2 liter V-8.)



6.

7. **ELECTRIC REAR WINDOW DEFROSTER.** Works as a defogger, and also helps keep your rear window free of frost, ice, sleet, and snow.



7.

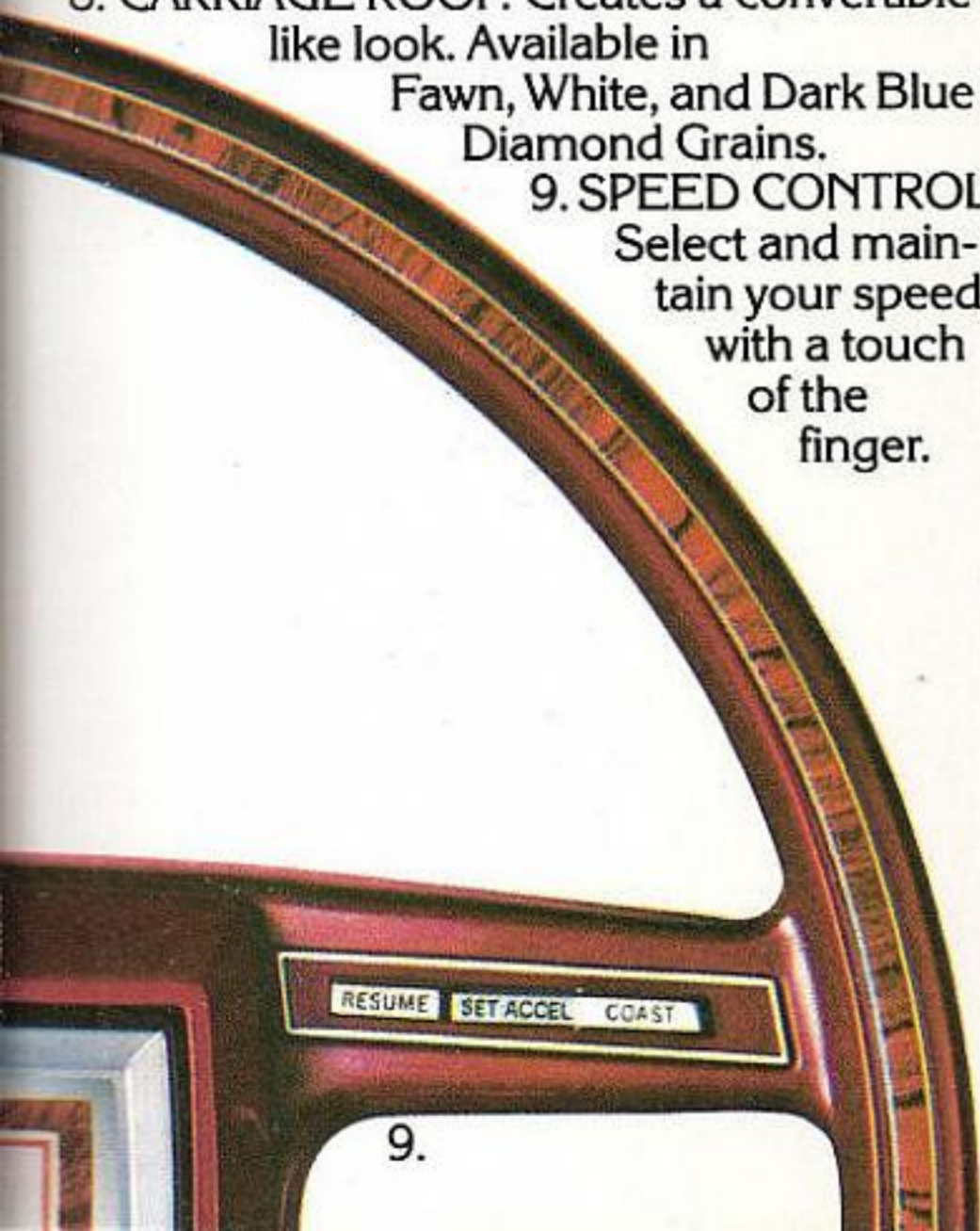
8. **CARRIAGE ROOF.** Creates a convertible-like look. Available in Fawn, White, and Dark Blue Diamond Grains.

9. **SPEED CONTROL.** Select and maintain your speed with a touch of the finger.



8.

- POWER ANTENNA
- POWER DOOR LOCKS
- POWER SEATS
- POWER WINDOWS



9.

YOUR CHOICE OF XR-7 MODELS, WITH THEIR STANDARD FEATURES.



XR-7 GS.

STANDARD FUNCTIONAL FEATURES

- Dual rectangular halogen headlamps
- 3.3 liter (200 CID) I-6 engine*
- Select-Shift automatic transmission
- Power brakes—front disc/rear drum
- Power rack-and-pinion steering
- Standard axle ratio (2.73:1)
- P195/75R14 WSW steel-belted radial tires
- Mini-spare tire
- Hybrid MacPherson front suspension; coil-spring rear suspension
- Front and rear stabilizer bars
- Inside hood release
- Dual note horn
- Side-fill fuel tank (21-gallon capacity)
- Dual braking system
- Brake failure warning light
- Sedan door frames and relocated door-lock buttons for improved anti-theft protection
- Viscous drive fan
- Theft-resistant decklid lock

STANDARD INTERIOR FEATURES

- AM radio (may be deleted for credit)
- Analog quartz clock
- Luxury cloth Twin Comfort Lounge seats with dual recliners
- Luxury four-spoke woodtone steering wheel
- Color-keyed seat belts with tension reliever
- 18-ounce cut-pile carpeting
- Woodtone instrument panel appliqué
- Trip odometer
- Luggage compartment light
- Glove box and ashtray lights
- Steering-column-mounted controls for wiper/washer, high/low headlamp beam, horn, turn signals
- Inertia seatback release
- Two-tier instrument panel
- Cut-and-score headlining
- Molded luggage compartment trim
- "Squeeze"-type glove box lock
- Soft rear-seat armrest

STANDARD EXTERIOR FEATURES

- Half-vinyl roof
- Decklid and hood accent stripes
- Bright left-hand remote-control sail-mounted mirror
- Wide door belt molding with black insert
- Color-keyed soft front and rear bumpers
- Bumper-mounted parking lamps and turn signals
- Black door frames
- Upper bodyside accent stripe
- Hood ornament
- Black bumper rub strips with white accent stripes
- Decklid lock ornament
- Bright headlight and parking lamp doors
- Vertical bar grille
- Full wheel covers
- Bright roof drip, belt, and window frame moldings
- Wide bodyside molding with black vinyl insert
- Rear pillar ornament



XR-7 LS

Includes all standard XR-7 GS features, plus these additions and/or differences:

- Luxury door and quarter trim panels
- Power windows
- Electronic seat belt warning chimes
- Luxury luggage compartment trim
- Passenger visor vanity mirror
- Dual remote-control outside mirrors
- LS luxury wheel covers
- Tinted glass

*Subject to late availability.

YOUR CHOICE OF OPTIONS, ALONG WITH SOME STANDARD FEATURES.

	XR-7 GS	XR-7 LS
<input type="checkbox"/> Air Conditioning, Manual	OPT	OPT
<input type="checkbox"/> Air Conditioning, Auto. Temp.	OPT	OPT
<input type="checkbox"/> Auto Lamp—On/Off Delay System	OPT	OPT
<input type="checkbox"/> Axle—Traction-Lok*	OPT	OPT
<input type="checkbox"/> Battery—Heavy-Duty*	OPT	OPT
<input type="checkbox"/> Bracket—Front License Plate	OPT	OPT
<input type="checkbox"/> Chimes—Seat Belt Reminder	OPT	STD
<input type="checkbox"/> Clock—Electronic Digital	OPT	OPT
<input type="checkbox"/> Cornering Lamps—Front	OPT	OPT
<input type="checkbox"/> Defroster—Electric Rear Window	OPT	OPT
<input type="checkbox"/> Glass, Tinted Complete*	OPT	STD
<input type="checkbox"/> Illuminated Entry System	OPT	OPT
<input type="checkbox"/> Keyless Entry System	OPT	OPT
<input type="checkbox"/> Luggage Compartment Trim	OPT	STD
<input type="checkbox"/> Mirror, Dual Illuminated Visor Vanity	OPT	OPT
<input type="checkbox"/> Mirrors—Dual Remote-Control	OPT	STD
<input type="checkbox"/> Molding—Rocker Panel	OPT	OPT
<input type="checkbox"/> Paint, Glamour	OPT	OPT
<input type="checkbox"/> Paint—Tu-Tone	OPT	OPT
<input type="checkbox"/> Parking Brake Release, Automatic	OPT	OPT

POWER

<input type="checkbox"/> Power Antenna	OPT	OPT
<input type="checkbox"/> Power Seat—6-Way, Driver, Twin Comfort Lounge	OPT	OPT
<input type="checkbox"/> Power Side Windows*	OPT	STD
<input type="checkbox"/> Protection, Lower Bodyside	OPT	OPT

RADIOS

<input type="checkbox"/> AM (may be deleted for credit)	STD	STD
<input type="checkbox"/> AM/FM Monaural	OPT	OPT
<input type="checkbox"/> AM/FM Stereo	OPT	OPT
<input type="checkbox"/> AM/FM with Cassette Tape	OPT	OPT
<input type="checkbox"/> AM/FM with 8-Track Tape	OPT	OPT
<input type="checkbox"/> Electronic AM/FM Stereo Search	OPT	OPT
<input type="checkbox"/> Electronic AM/FM Stereo Search with Cassette Tape	OPT	OPT
<input type="checkbox"/> Electronic AM/FM Stereo Search with 8-Track Tape	OPT	OPT
<input type="checkbox"/> Premium Sound System	OPT	OPT
<input type="checkbox"/> Speakers—Dual Rear Seat	OPT	OPT
<input type="checkbox"/> Roof, Carriage	OPT	OPT
<input type="checkbox"/> Roof, Flip-Up/Open Air	OPT	OPT
<input type="checkbox"/> Roof, Luxury Rear Half-Vinyl	OPT	OPT
<input type="checkbox"/> Seats—Low-Back Bucket	OPT	NA
<input type="checkbox"/> Seats—Recaro Bucket	OPT	NA
<input type="checkbox"/> Seats, Twin Comfort Lounge, Dual Recliners	STD	STD
<input type="checkbox"/> Speed Control—Fingertip	OPT	OPT
<input type="checkbox"/> Steering Wheel—Leather-Wrapped*	OPT	OPT
<input type="checkbox"/> Steering Wheel—Woodtone	STD	STD
<input type="checkbox"/> Stripes, Hood Accent	STD	STD
<input type="checkbox"/> Trim—Leather and Vinyl	NA	OPT

	XR-7 GS	XR-7 LS
<input type="checkbox"/> Trim—Vinyl	OPT	NA
<input type="checkbox"/> Tripminder Computer	OPT	OPT
<input type="checkbox"/> Windows—Pivoting Front Vent	OPT	OPT
<input type="checkbox"/> Wipers—Interval Windshield	OPT	OPT

ENGINES/TRANSMISSIONS

<input type="checkbox"/> 3.8 Liter V-6 2V w/Automatic Overdrive*	OPT	OPT
<input type="checkbox"/> 4.2 Liter V-8 2V (255CID) w/Automatic Overdrive*	OPT	OPT

RADIAL TIRES/WHEELS

<input type="checkbox"/> P220/55R390 WSW Radial**	OPT	OPT
<input type="checkbox"/> P205/60R390 WSW Radial**	OPT	OPT
<input type="checkbox"/> P195/75R14 WSW Puncture Resistant Radial	OPT	OPT
<input type="checkbox"/> Conventional Spare Tire	OPT	OPT
<input type="checkbox"/> Full Wheel Covers	STD	NA
<input type="checkbox"/> Luxury LS Wheel Covers	NA	STD
<input type="checkbox"/> Luxury GS Wheel Covers*	OPT	NA
<input type="checkbox"/> Wire Wheel Covers*	OPT	OPT
<input type="checkbox"/> Cast Aluminum Wheels	OPT	OPT

OPTIONAL PACKAGES

<input type="checkbox"/> APPEARANCE PROTECTION GROUP—Includes door edge guards, and license plate frames (rear only) and color-keyed carpeted front floor mats.	OPT	OPT
<input type="checkbox"/> DIAGNOSTIC WARNING LIGHT SYSTEM—Includes warning lights for door ajar, low washer fluid, low beam out, brake lamp out, taillamp out, low fuel, and "headlamps on" warning buzzer.	OPT	OPT
<input type="checkbox"/> ELECTRONIC INSTRUMENT PANEL—Includes digital speedometer, electronic fuel gauge, electronic day/date/elapsed time clock (deleted with Tripminder Computer), black instrument panel, steering column appliques, and steering wheel	OPT	OPT
<input type="checkbox"/> HEAVY-DUTY SUSPENSION—Includes heavy-duty front and rear shocks and heavy-duty rear springs.	OPT	OPT
<input type="checkbox"/> KEYLESS ENTRY SYSTEM—Includes Power Lock Group and Illuminated Entry (not available with carriage roof).	OPT	OPT
<input type="checkbox"/> LIGHT GROUP—Includes engine compartment light, dual beam dome/map light, and instrument panel courtesy lights.	OPT	OPT
<input type="checkbox"/> POWER LOCK GROUP—Includes power door locks and power decklid release (included with Keyless Entry System).	OPT	OPT

STD—Standard OPT—Optional NA—Not Available

*This equipment is subject to additional ordering requirements or limitations. Please consult your Dealer for details.
**Includes cast aluminum wheels and handling suspension system.

INTERIOR SEATING CHOICES.



The standard seating arrangement for the XR-7 GS features Twin Comfort Lounge seats trimmed in cloth. Colors are:

Dark Red, Midnight Blue, French Vanilla, Vaquero, and Medium Fawn. This seat comes in optional vinyl (sew style not shown) with the same colors, plus: Opal with Pewter, Opal with Dark Red, Opal with Midnight Blue, Opal with Vaquero, and Opal with Medium Fawn.



You may also order optional bucket seats on your XR-7 GS. They're trimmed in vinyl and come in: Dark Red, Midnight Blue, Vaquero, and Medium Fawn. These color combinations are also available: Opal with Pewter, Opal with Dark Red, Opal with Midnight Blue, Opal with Vaquero, and Opal with Medium Fawn.



With the XR-7 LS, the Twin Comfort Lounge seats trimmed in cloth are standard. Colors are: Dark Red, Midnight Blue, French Vanilla, Vaquero, Medium Fawn, and the color combination of Opal with Pewter. Also available in optional leather with the same color choices.



Optional Recaro bucket seats are also available on the GS. They're trimmed in cloth and come in: Dark Red, Midnight Blue, and Vaquero.

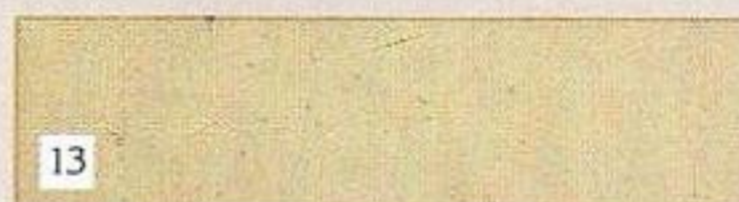
EXTERIOR COLOR CHOICES.

STANDARD COLORS



- 1. Black
- 2. White
- 3. Lt. Pewter Metallic
- 4. Medium Pewter Metallic
- 5. Pastel French Vanilla
- 6. Medium French Vanilla
- 7. French Vanilla Metallic
- 8. Dark Brown Metallic
- 9. Medium Vaquero Metallic
- 10. Medium Red
- 11. Dark Cordovan Metallic
- 12. Dark Blue Metallic

OPTIONAL GLAMOUR COLORS



- 13. Lt. Fawn Metallic
- 14. Lt. Medium Blue Metallic

NOTE: Due to occasional printing irregularities, the colors shown may vary from actual hues. Please see your Lincoln-Mercury Dealer for accurate color chips.

OPTIONAL TU-TONE

—Upper body color on hood, upper bodyside, roof, and decklid
 —Lower body color on lower bodyside, rear back panel, and sightshields

UPPER BODY COLOR	LOWER BODY COLOR	VINYL ROOF	INTERIOR TRIM
Lt. Pewter Met.	Med. Pewter Met.	Lt. Pewter Met.	Opal with Pewter
Pastel Fr. Van.	Med. Fr. Van.	Fr. Van.	French Vanilla
Dark Brown Met.	Lt. Fawn Met.	Dark Brown Met.	Medium Fawn
Lt. Pewter Met.	Medium Red	Lt. Pewter Met.	Dark Red or Opal with Pewter
Lt. Pewter Met.	Dark Blue	Lt. Pewter Met.	Opal with Pewter or Midnight Blue

XR-7 SPECIFICATIONS

Wheelbase	108.4"
Turning Diameter	40.0'
Overall Length	200.4"
Overall Height	53.3"
Overall Width	74.1"
Tread	
—Front	58.1"
—Rear	57.0"
Headroom	
—Front	37.7"
—Rear	36.7"
Legroom	
—Front (Max.)	42.7"
—Rear (Min.)	35.5"
Shoulder Room	
—Front	56.0"
—Rear	55.6"
Hiproom	
—Front	56.2"
—Rear	52.0"
Luggage/Cargo Capacity (Cu. Ft.)	17.7
Fuel Tank Capacity (Gals.)	21.0
Curb Weight (Lbs.)	3152

GAS MILEAGE

30 EST. HWY. **19*** EPA EST. MPG

*With optional 3.8 liter engine, automatic overdrive transmission. Estimate for comparison. Your mileage may differ depending on speed, distance and weather. Actual highway mileage lower.

MAINTENANCE SCHEDULE

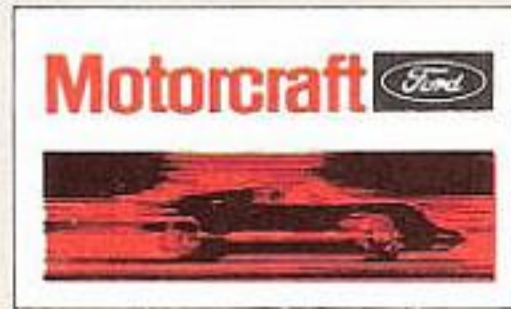
The Ford Motor Company wants to reduce both the frequency and cost of scheduled maintenance on its cars to an absolute minimum. And compared to just a few years ago, we're making strides in that direction. For example, in 1973, an engine oil change was called for each 4,000 miles. In 1982, XR-7 oil changes are recommended at 7,500-mile intervals. Other recommended intervals are now 30,000 miles between spark plug changes; 30,000 miles between air filter replacements; 50,000 miles or three years between engine coolant replacements. We're proud of these improvements, and we're working constantly to make them even better.

CORROSION PERFORATION WARRANTY

Ford Motor Company offers a limited three-year corrosion perforation warranty excluding exhaust system components on all new 1982 Lincoln-Mercury automobiles. And at no cost to you.

The warranty states that any sheet metal part which, in normal use, develops perforation from corrosion within three years of retail delivery or first use will be repaired or replaced free of charge by the selling Dealer after inspection by a Ford representative. Exhaust system components or parts which develop corrosion perforation caused by accidents or other damage are not covered.

This warranty valid only in the 50 United States.



...FOR SURE

QUALITY REPLACEMENT PARTS FROM FORD

Your new Cougar XR-7 comes equipped with factory-engineered and approved parts including dependable Motorcraft battery, shock absorbers, spark plugs, long-life oil filters, and motor oil. For continued top performance, be sure to specify genuine Motorcraft parts whenever replacement is necessary.



Ford Motor Company's optional Extended Service Plan covers major components on new Mercury cars for longer than the vehicle's basic warranty. The cost is so moderate for the protection you get that it could pay for itself the first time you need it. Ask your Lincoln-Mercury Dealer for complete details of the Plan, which is available on cars sold and normally operated in the 50 United States and Canada.

FORD-PAID REPAIR PROGRAMS AFTER THE WARRANTY PERIOD.

Sometimes Ford Motor Company offers adjustment programs to pay all or part of the cost of certain repairs. These programs are intended to assist owners and are in addition to the warranty or to required recalls. Ask Ford Motor Company or your Lincoln-Mercury Dealer about such programs relating to your Ford or Lincoln-Mercury vehicle.

To get copies of any adjustment program for your vehicle or the vehicle of interest to you:

Call Ford toll-free at
1-800-241-3673.

Alaska and Hawaii, call 1-800-243-3711.
In Georgia, call 1-800-282-0959

or write Ford at

Ford Customer Information System
Post Office Box 95427
Atlanta, GA 30347.

We'll need your name and address; year, make, model, and vehicle identification number, as well as engine size; and whether you have a manual or automatic transmission.

TECHNICAL SERVICE BULLETINS

All vehicles need repairs during their lifetime. Sometimes Ford issues Technical Service Bulletins (TSBs) and easy-to-read explanations describing unusual engine or transmission conditions which may lead to costly repairs, the recommended repairs, and new repair procedures. Often a repair now can prevent a more serious repair later. Ask Ford Motor Company or your Lincoln-Mercury Dealer for any such TSBs and explanations relating to your Ford or Lincoln-Mercury vehicle.

To get copies of these Technical Service Bulletins and explanations for your vehicle or the vehicle of interest to you:

Call Ford toll-free at
1-800-241-3673.

Alaska and Hawaii, call 1-800-243-3711.
In Georgia, call 1-800-282-0959

or write Ford at

Ford Customer Information System
Post Office Box 95427
Atlanta, GA 30347.

We'll need your name and address; year, make, model, and vehicle identification number, as well as engine size; and whether you have a manual or automatic transmission.

Specifications and descriptions used were in effect when this publication was approved for printing. Lincoln-Mercury Division reserves the right to discontinue options at any time, or change specifications, equipment or designs without notice and without incurring obligation. Standard and optional equipment listed is subject to change. Some features described are optional at extra cost. Some options are required in combination with other options. Availability of some features may be subject to a slight delay.

Buy or lease your XR-7 from your Lincoln-Mercury Dealer.

MERCURY COUGAR XR-7

LINCOLN-MERCURY DIVISION

