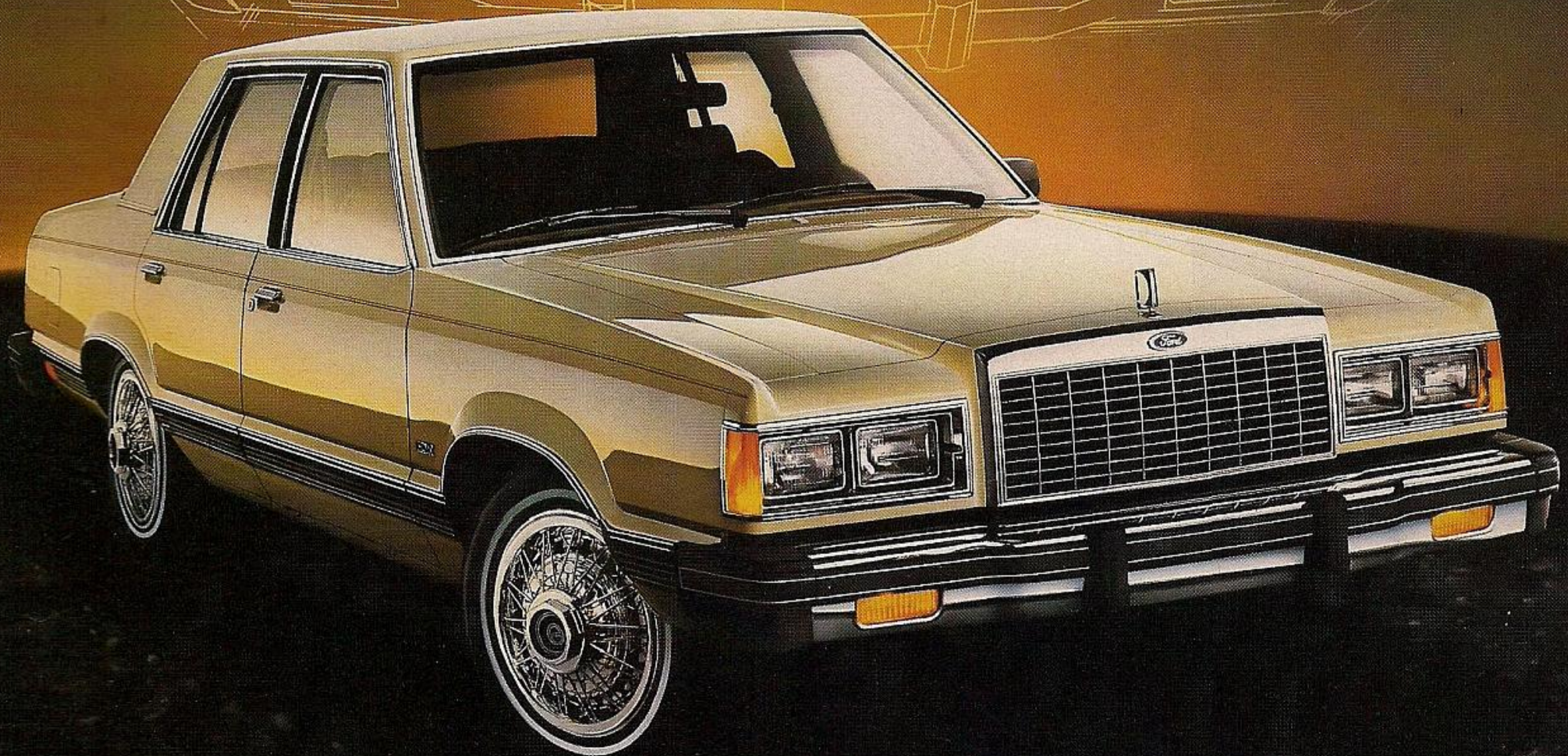




1982 FORD

GRANADA

LOOK OUT WORLD
HERE COMES FORD



1982 FORD GRANADA GLX SERIES

In such a fast-moving world, it's good to know that some things don't have to change simply for the sake of change. The 1982 Ford Granada is a good case in point. From the distinctive grille to the clean-lined rear deck and tail-

lamps, Granada has retained its classic styling and trim contemporary design. And you can still seat as many as six passengers in Granada's roomy, comfortable interior. However, two rather significant changes have been made for '82. First, Granada's

model lineup now includes two fine 4-door wagons, both of which have more cargo room than any North American-built wagon in their class.* And second, a new deep-well trunk design has been incorporated into Granada sedans. The deep-

well design enables you to stow luggage in a handy upright position. Unchanged are the richness and fine detailing of Granada's interior styling. And, of course, throughout Granada is Ford's continuing commitment to quality.

If you're considering a new car this year and you appreciate the finer things in life, consider the new Ford Granada. It combines tasteful good looks and state of the art technology. 1982 Ford Granada. Something to arrive in. See it today.

Cover and Back Cover: Granada GLX 4-Door in Pastel Vanilla. Below: Granada GLX 2-Door in Medium Pewter.

*Excluding other Ford Motor Company products.

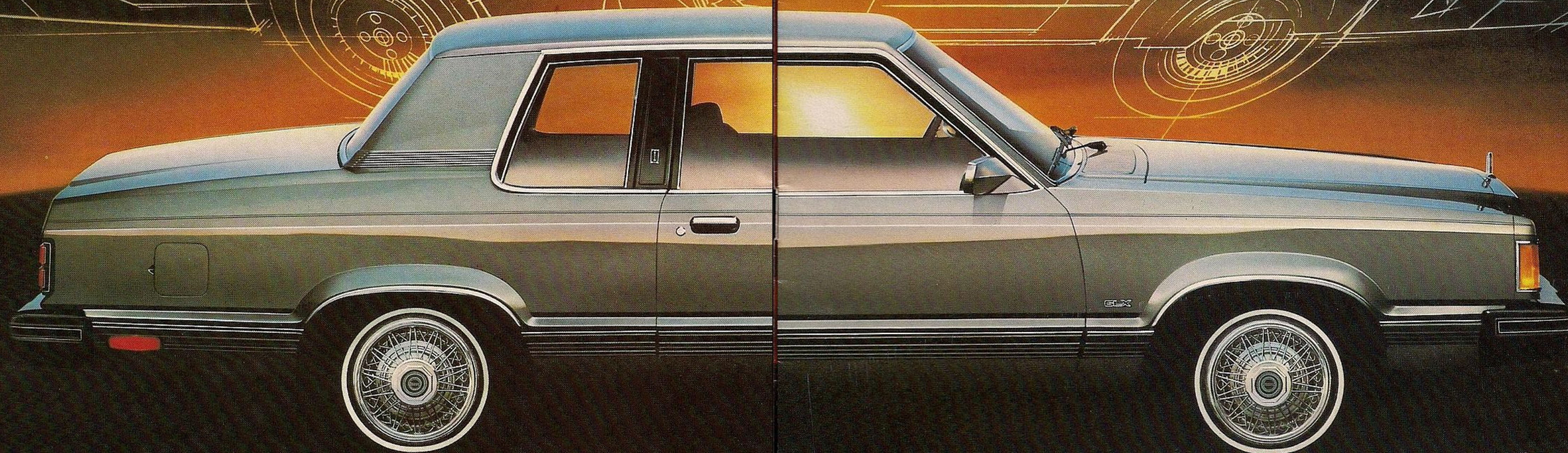
KEY DIMENSIONS

2-door sedan	mm	Inches
Front - Headroom	975	38.4
- Legroom	1059	41.7
Rear - Headroom	950	37.4
- Legroom	907	35.7
Trunk space	476 L	16.8 cu. ft.

TRUNK SPACE - 168 CU. FT.
DEEP-WELL DESIGN ADDS 5"
MORE DEPTH THAN IN '81

SEAT CONSTRUCTION
MOLDED FOAM OVER
FLAT SPRING STEEL.
FLEX-TYPE DESIGN.

3.8 LITER V6 ENGINE OPTION
-HIGH ALUMINUM CONTENT



FORD GRANADA GLX INTERIOR

Right: Granada GLX instrumentation.

Below: Granada GLX 4-Door interior with optional interior with optional split bench seat in Red. Seats adjust separately, have individual fold-down center armrests and reclining seat backs.



FORD GRANADA GL SERIES

Right: GL standard interior in Midnight Blue.

Center: GL standard bucket seats in Red.

Far right: Granada GL 2-Door in Midnight Blue Metallic with optional full vinyl roof in Midnight Blue.



Below: Granada GL 4-Door in Tu-Tone Dark Brown Metallic/Medium Fawn Glow.



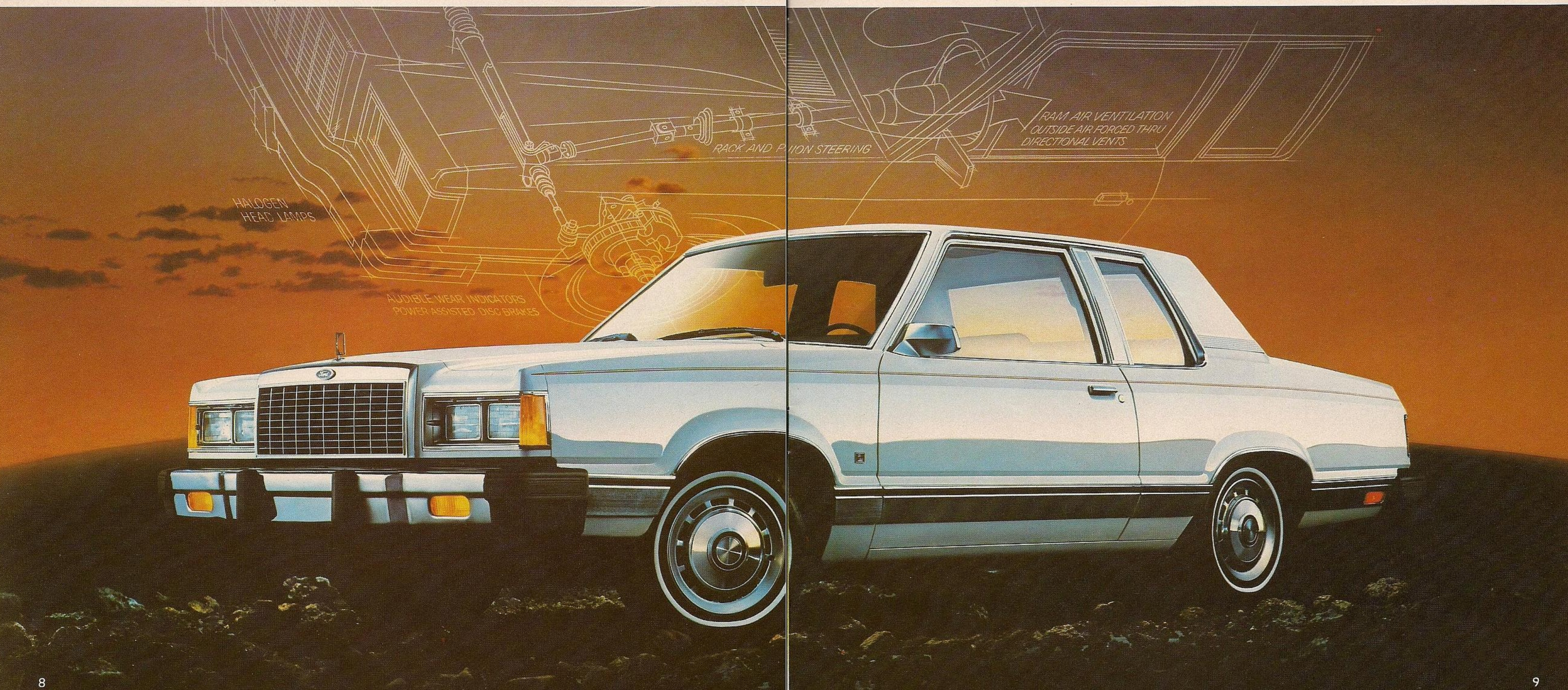
FORD GRANADA L SERIES

Right: Standard flight bench seat in Pewter cloth.



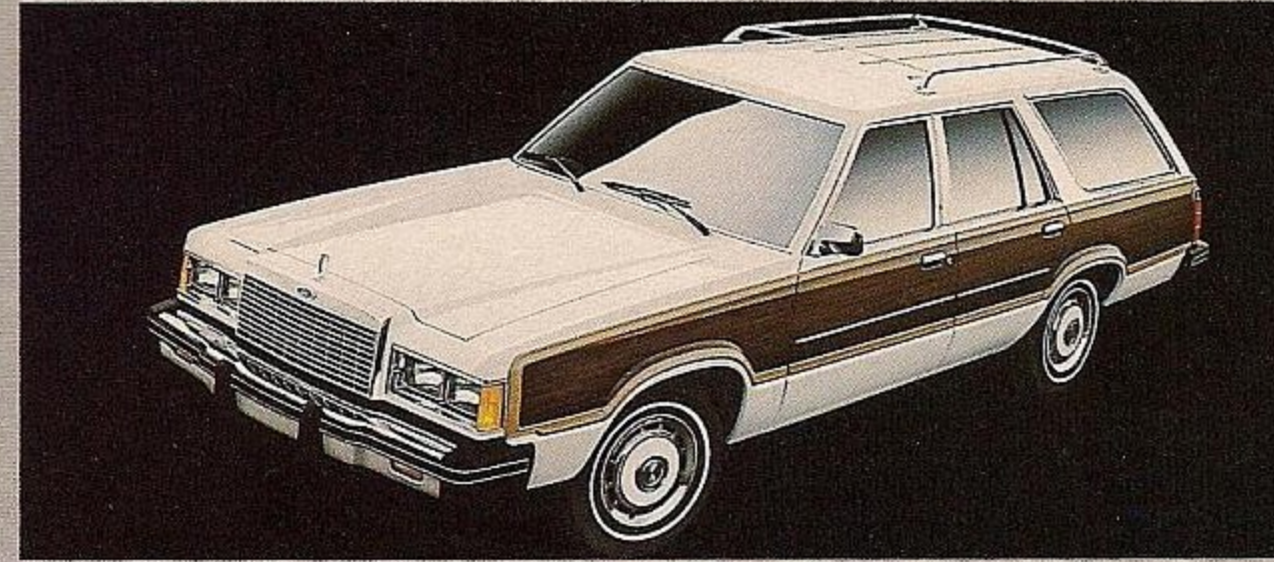
Left: Granada L 4-Door in Light Pewter Metallic.

Below: Granada L 2-Door in Polar White.



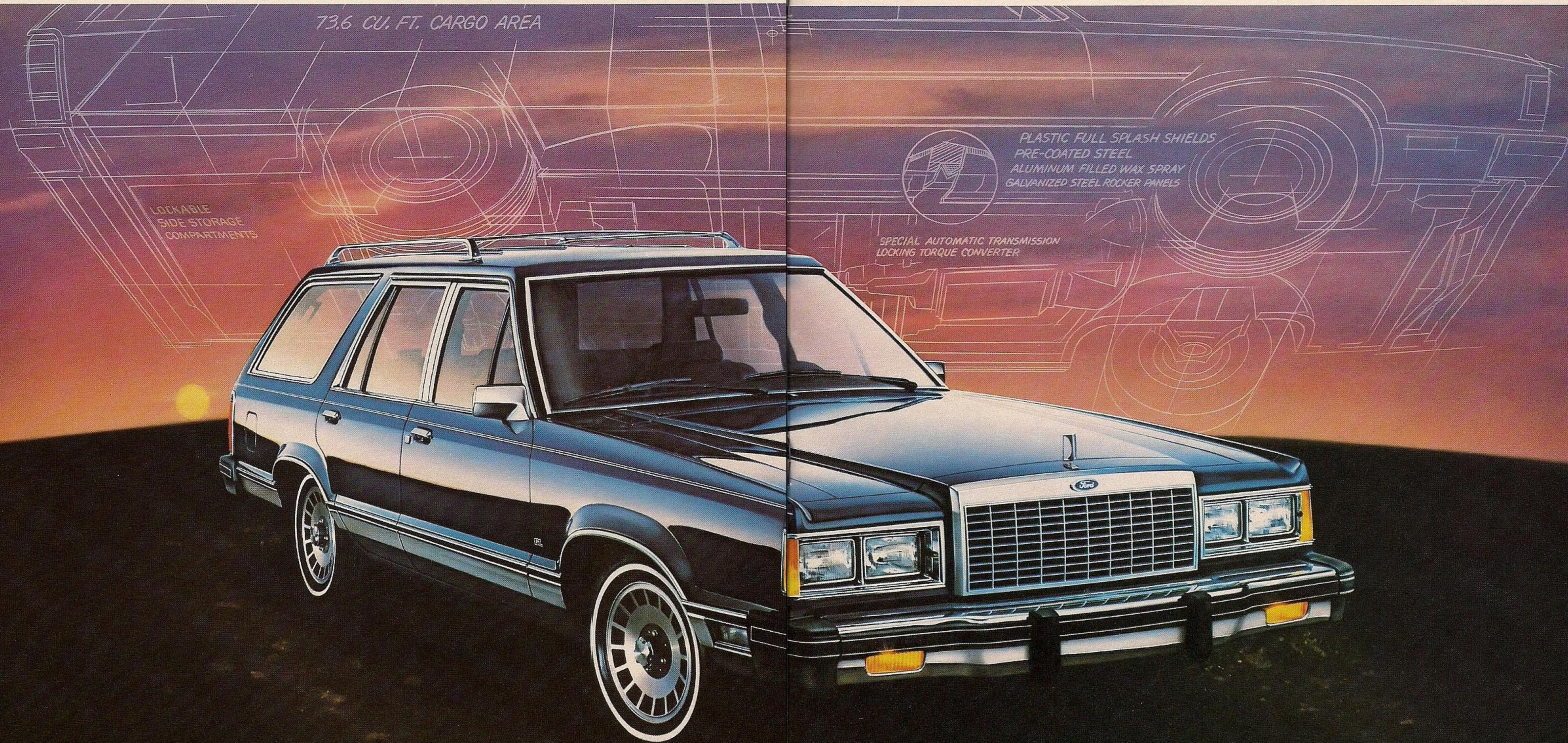
FORD GRANADA WAGON SERIES

Right: Optional Granada Wagon Two-Way Liftgate.



Left: Granada GL Wagon in Polar White with the Squire Option.

Below: Granada GL Wagon in Midnight Blue Metallic.



THIS IS FORD GRANADA FOR 1982.



Granada L 2-Door, pages 8-9



Granada GL 4-Door, pages 6-7



Granada GLX 2-Door, pages 2-3



Granada GL Wagon, pages 10-11

In 1981, Granada underwent dramatic changes that saw it shed hundreds of pounds of weight and emerge as the most fuel-efficient, aerodynamic Granada ever.

In 1982, the changes continue with Granada offering an expanded model lineup that includes two new wagons in addition to a wide selection of 2-door and 4-door sedans. There are three series which include GLX 2- and 4-door sedans, the most luxurious Granadas; the GL series with a new wagon and 2- and 4-door sedans, a pleasant combination of luxury and practicality; and the L series also with a new wagon, 2- and 4-door sedans. All of these new Granadas represent the kind of outstanding value that car buyers seek today. Now let's examine each series in detail.

GRANADA L

If the standard equipment of an automobile is a measure of its value, then Granada is a standout value in its class.

The value starts with Granada's fuel-efficient powerteam of 2.3 litre OHC 4-cylinder engine and 3-speed automatic transmission.

For precise steering, add Granada's rack and pinion steering and MacPherson strut-type front suspension to the L's value list. Then add a maintenance-free battery. Add power-assisted front disc brakes, with rear drum brakes and 14-inch P-metric steel-belted radials to help stretch gas mileage. Also add dual rectangular halogen headlamps with their brighter, whiter lights, and a driver's mirror that's remote-controlled for added convenience. And for your entertainment, every

Granada includes an AM radio as standard equipment.

Granada L's handsome exterior features a bright grille and surround moulding plus bright protective mouldings along the body sides and bright mouldings around side windows and windshield. Bright, light-weight high-strength steel bumpers with front bumper guards—more value. Deluxe wheel covers—even more!

Granada L (shown also on pages 8-9) is a value story in itself.

GRANADA GL

The Granada GL exterior (shown on pages 6-7) features wheel covers that are colour-keyed to the body colour, any one of 14 lustrous Granada paint selections. Paint stripes outline hood, decklid and bodysides. Front and rear bumper rub strips and rear

bumper guards are added to the bumpers.

GL interiors feature deep cut-pile carpeting and cloth and vinyl flight bench seats. Walnut woodtone appliques add warmth to door trim panels. And there are conveniences—the kind appreciated by driver and passengers alike—in every Granada series. Front door armrests with integral pull handles. Column-mounted levers that place the five most frequently used controls at the driver's fingertips: turn signals, horn, windshield wipers and washers and headlamp dimmer.

There's a cigarette lighter, front and rear seat ashtrays, automatic seat-back releases on 2-door models, and much, much more.

Granada GL, tastefully done with you in mind.

GRANADA GLX

Granada GLX (also pictured on pages 2-3) displays the kind of luxury and distinctiveness usually reserved for much costlier cars. GLX's warm, inviting interiors surround you with luxurious touches like plush 18-ounce cut-pile carpeting. Luxury-level door trim panels are enhanced by rich dark burled walnut woodtone appliques with matching appliques in the instrument cluster. Pleasant sounding electronic warning chimes remind you to buckle up.

For your comfort, standard seats are cloth and vinyl flight bench seats—giving you 3-passenger seating in front. Deep-cushioned low-back buckets trimmed in glove-soft vinyl and split bench seats (shown on pages 4-5) are available as options.

Passengers in the rear are treated equally well with comfortably wide, deep seats, softly padded rear quarter trim panels with integral armrests and courtesy lighting. Even your luggage gets special treatment in GLX with Granada's fully carpeted, new-design deep-well trunk. The deep-well design, standard on all Granada sedans, permits luggage (for grocery bags on a shopping trip) to be loaded in an upright position.

GLX's low profile is enhanced by rich blackout trim on the door frames and mid pillar. The lower body-side moulding is as good-looking as it is functional. It features a ribbed design in tough vinyl that is colour-coordinated with the exterior paint colour and helps protect the car from door dings when parked in close quarters.

Paint stripes on the bodysides, decklid and hood, dual remote control mirrors and stylish turbine wheel covers add further luxury touches to GLX.

GRANADA WAGONS

The introduction of the first Granada wagons (also seen on pages 10-11) is significant news. Offered in GL and L series, these wagons have more cargo space than any North American-built wagon in their class.*

The Granada GL offers the perfect blend of utility and luxury (room for six passengers or 2 084 litres (73.6 cu. ft.) of cargo with the second seat down). The GL wagon shares many of the sedan's luxury features. Example: luxury cloth/vinyl flight bench seat; door panels of soft vinyl trim with walnut woodtone appliques; matching walnut woodtone appliques in the

instrument panel; deep-pile carpeting.

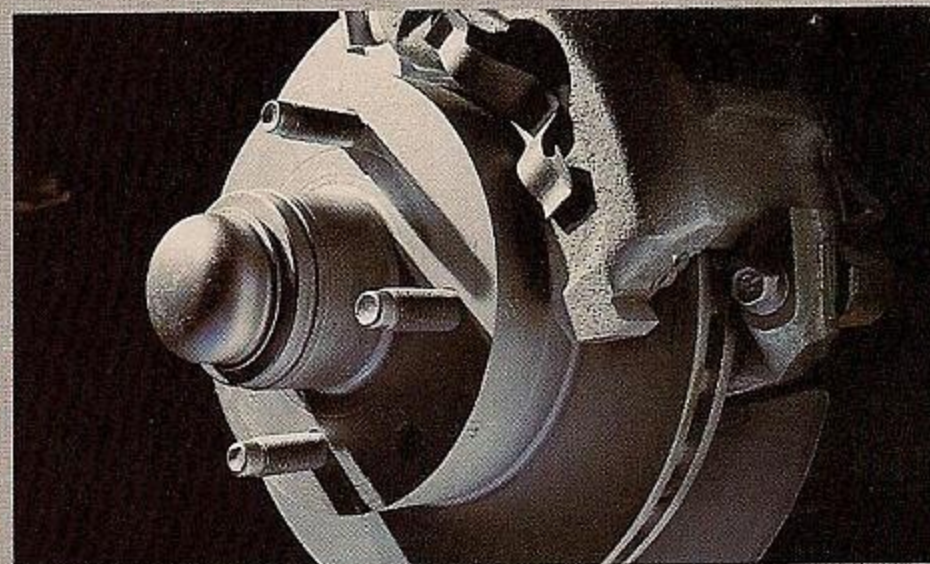
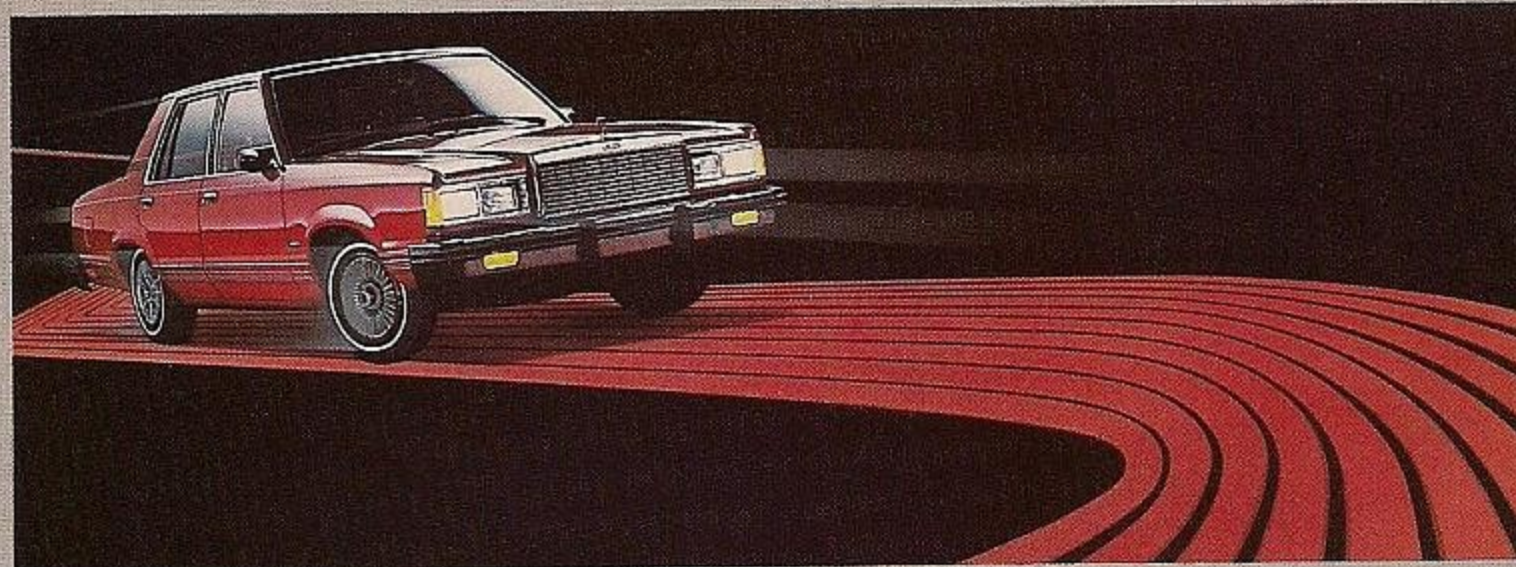
Granada L in similar fashion takes its styling cue from the L sedans. And none of the L's extra value features are left out. In fact, you can add to them special wagon value features (shared by GL and L wagons alike).

A 3.3 litre (200 CID) 6-cylinder engine is standard as is the new 3-speed SelectShift Automatic transmission. It features a locking torque converter that helps save fuel (for details, see page 14).

New GL and L wagons—built with contemporary styling in the Granada tradition and built with Ford's commitment to quality.

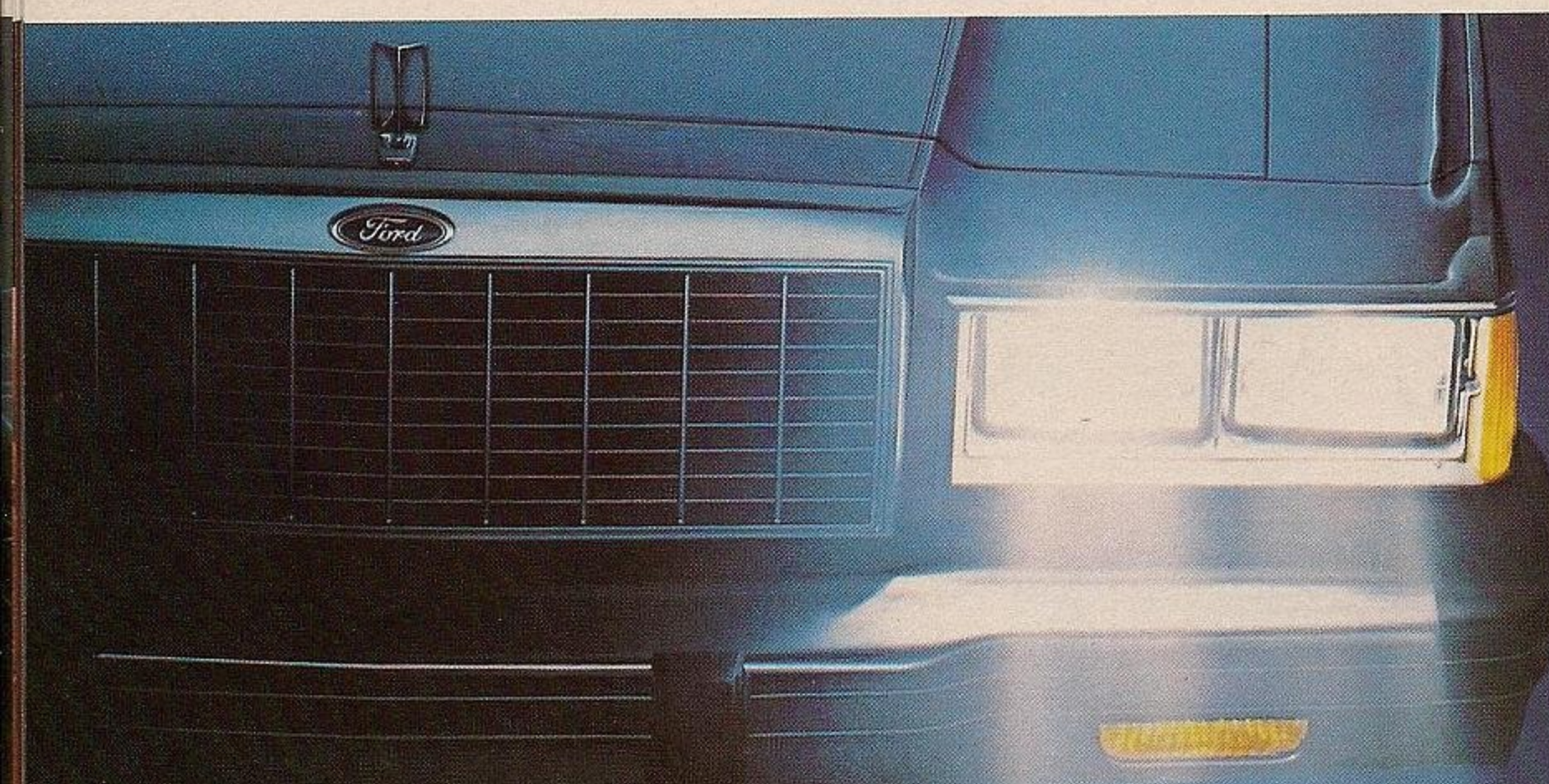
*Excluding other Ford Motor Company products.

FORD GRANADA - A CLOSER LOOK.



Above
Far left: Precise Rack and Pinion Steering.
Center: Power Assisted Front Disc Brakes.
Left: New Redesigned Trunk.

Below
Left: Halogen Headlamps
Center: New 3.8L V-6 Engine.
Right: MacPherson Strut Type Front Suspension.



was tested on the road for 1,900,000 kilometers. The new V-6 3.8 L engine, providing power equivalent to Ford's 4.2 L V-8 engine, is an option available on all Granada sedans and wagons.

Power-Assisted Front Disc Brakes

Granada's power-assisted front disc brakes are the pin slider design. They consist of three major pieces; a rotor, caliper housing and anchor plate. When the

brakes are applied, the caliper slides on machined surfaces, centers automatically and applies pressure equally through brake pads to both sides of the rotor. In addition, Granada's front discs give you the added convenience of a power assist, standard.

New Redesigned Trunk

A new, totally redesigned luggage compartment is an important Granada feature for '82. The new design provides an additional 127 mm (five inches) of depth compared to the previous design. The extra 127 mm form a deep well in the

centre of the trunk, making it easy to stand grocery bags or luggage in an upright position. Trunk capacity measures 476 litres (16.8 cu. ft.)

Two-Way Liftgate

Another innovation from Ford, the Wagonmaster. The new optional Two-Way Liftgate gives you the added convenience of an independently operating window. In tight spaces, the window can be unlocked and opened separately for quick and easy small package loading and unloading.

SelectShift Automatic Transmission with Locking Torque Converter

The new SelectShift transmission incorporates a locking torque converter that provides a near mechanical linkup between the engine and transmission in all three forward gears. This reduces much of the

torque converter slippage found in automatic transmissions without the lockup feature. The new transmission is standard equipment on both the GL and L wagons all sedans with 3.3 L and 3.8 L engines.

MacPherson Strut-Type Front Suspension

Granada uses a modified strut-type front suspension modeled after the proven MacPherson design. This front suspension system is one of the contributors to Granada's smooth, comfortable ride.

Granada is an outstanding example of Ford's response to the special needs of today's driving. It's a response that represents Ford's continuing commitment to quality.

In Granada, you see a car that recently underwent a dramatic transformation and emerged from it with a totally new design. It's trimmer by hundreds of pounds, with a smooth, comfortable ride and a more aerodynamic body design than its 1980 counterpart.

The 1982 Granadas are not only built for the times, but they are built with an attention to detail that makes them fine automobiles and worthy of close inspection by the most quality-conscious new car buyers.

Precise Rack and Pinion Steering

Granada's precise handling characteristics are a benefit of its rack and pinion steering. This type of system eliminates much of the complex linkages of conventional recirculating ball-type

steering systems. There's also a power assist option that greatly eases tight maneuvering situations.

Halogen Headlamps

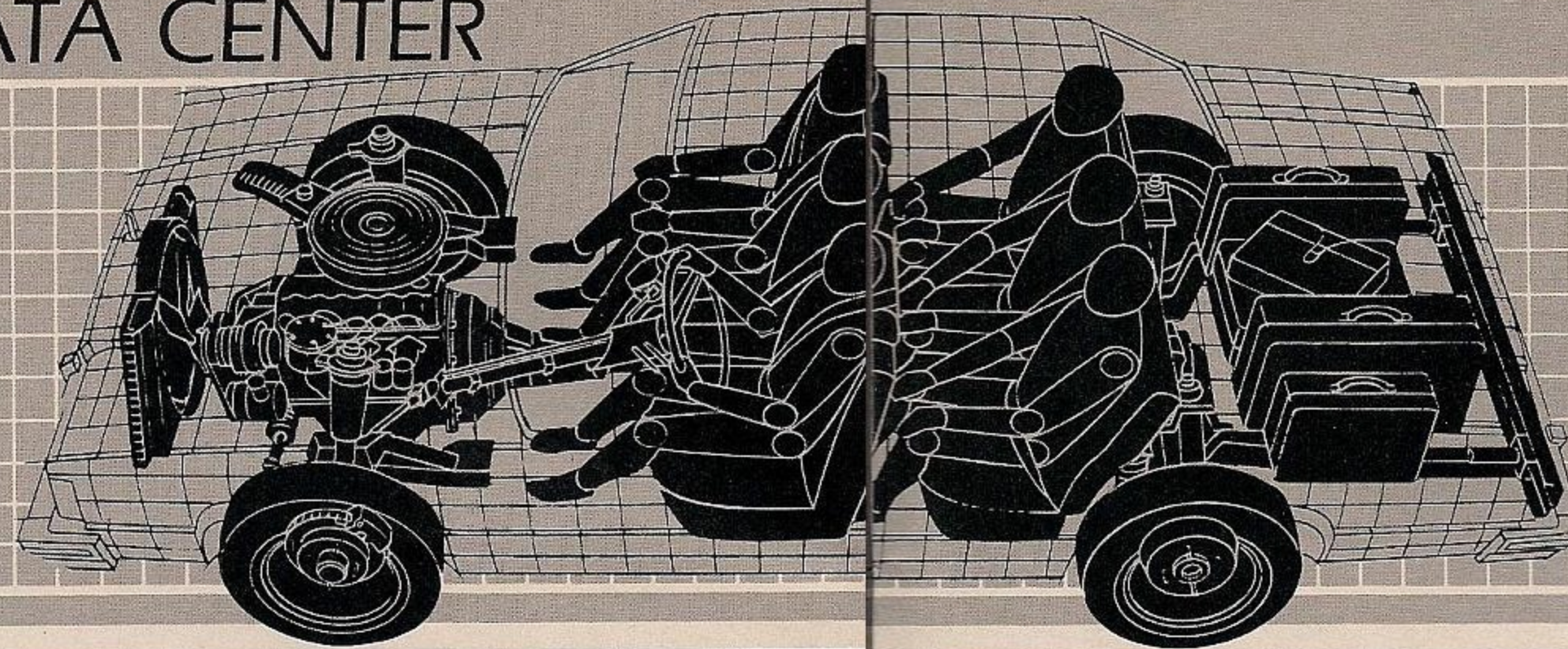
Halogen headlamps are another example of advanced technology in Granada. The halogen design is more efficient than conventional sealed beams, requiring less energy to emit a brighter, whiter light.

New 3.8 litre (232 CID) V-6 Engine

Typical of Ford's engineering thoroughness, this new lightweight V-6



FORD GRANADA DATA CENTER



CORROSION PROTECTION

All Ford Granada cars are protected with the DURAGUARD System, which includes 7 processes built in at the factory as standard equipment, to provide corrosion protection as follows:

- precoated steel on doors, quarter panels and other selected areas;
- galvanized steel on rocker panels, selected cowl tops and underbody parts;
- vinyl sealer on the underside of rear wheelhouses;
- phosphate coating on the entire car body after a super cleaning process;
- electrocoat process to apply corrosion resistant primer paint, also on the entire body;
- aluminized wax sprayed into hard-to-reach lower body areas, the inside surfaces of doors and quarter panels;
- protective vinyl coating on the lower bodyside for resistance to stone chipping and road abrasion.

The DURAGUARD System is backed by a no-extra charge 36-month unlimited distance manufacturer's warranty against corrosion perforation. This warranty, transferable to succeeding owners during this warranty period, covers the cost of both labour and materials for repair of perforation of parts caused by corrosion. Exhaust system components are excluded. The basic 12-month/20,000 kilometre warranty covers corrosion, other than perforations, that are due to defective factory materials or workmanship. Ask your dealer for details.

NOTABLE STANDARD FEATURES

ENGINEERING	Sedans			Wagons	
	L	GL	GLX	L	GL
2.3 litre OHC 4-cylinder engine	S	S	S	NA	NA
3.3 litre I-6 cylinder engine	O	O	O	S	S
DuraSpark electronic ignition	S	S	S	S	S
Electronic voltage regulator	S	S	S	S	S
Maintenance-free battery	S	S	S	S	S
4-speed manual transmission	O	O	O	NA	NA
SelectShift automatic transmission with locking torque converter	S	S	S	S	S
Modified MacPherson strut front suspension/4-bar link coil spring rear suspension	S	S	S	S	S
Power front disc brakes with lining wear indicators	S	S	S	S	S
Rear drum brakes	S	S	S	S	S
P-metric 14" BSW steel-belted radial ply tires	S	S	S	S	S
Rack and pinion steering	S	S	S	S	S
Electric rear window defroster	S	S	S	S	S

EXTERIOR

Dual rectangular halogen headlamps	S	S	S	S	S
Bright bumpers, front and rear	S	S	S	S	S
Front bumper guards	S	S	S	S	S
Rear bumper guards	O	S	S	O	S
Front and rear bumper rub strips	O	S	S	O	S
Paint stripes on bodyside and hood, plus decklid on sedans (deleted with Tu-Tone option)	O	S	S	O	S
LH remote control mirror	S	S	S	S	S
RH remote control mirror	O	O	S	O	O
Deluxe wheel covers	S	NA	NA	S	NA
Colour-keyed wheel covers	NA	S	NA	NA	S
Turbine wheel covers	NA	NA	S	NA	NA
Gas cap tether	S	S	S	S	S

INTERIOR

Flight bench seat in cloth and vinyl	S	S	S	S	S
Low-back bucket seats in cloth and vinyl	O	NA	NA	NA	NA
Luxury vinyl seat trim all-vinyl bucket	O	O	O	NA	NA
Automatic seat back releases (2-Door)	S	S	S	NA	NA
Cut-pile carpeting	S	S	S	S	S
All-vinyl colour-keyed door trim panels with bright accents	S	NA	NA	S	NA
Luxury door trim panels with dark walnut woodtone appliques	NA	S	S	NA	S
Colour-keyed deluxe belts with comfort regulator feature	S	S	S	S	S
Dark walnut woodtone appliques on instrument cluster and right side	S	S	S	S	S
Deep-well luggage compartment (fully carpeted on GLX)	S	S	S	NA	NA
Steering column-mounted multi-function levers for turn signals, horn, windshield wipers/washers and headlamp dimmer	S	S	S	S	S
Inside day/night windshield mounted rearview mirror	S	S	S	S	S
Inside hood release	S	S	S	S	S
AM radio with dual speakers	S	S	S	S	S
Cigarette lighter	S	S	S	S	S
Rear seat ashtray	S	S	S	S	S
Glove box lock	S	S	S	S	S
Lockable stowage compartments in left rear quarter panel	NA	NA	NA	S	S
Cargo area light	NA	NA	NA	S	S
"Liftgate Open" warning light	NA	NA	NA	S	S
Electronic warning chimes	NA	NA	S	NA	NA
Fold-down rear seat with carpeted seat back	NA	NA	NA	S	S
Carpeted load floor	NA	NA	NA	S	S

S=Standard NA=Not Available O=Optional

MEASUREMENTS

	2-Door		4-Door		Wagons	
	mm	Inches	mm	Inches	mm	Inches
Wheelbase	2 680	105.5"	2 680	105.5"	2 680	105.5"
Length	4 991	196.5"	4 991	196.5"	4 993	196.5"
Height	1 346	53.0"	1 346	53.0"	1 377	54.2"
Width	1 803	71.0"	1 803	71.0"	1 803	71.0"
Front Tread	1 438	56.6"	1 438	56.6"	1 438	56.6"
Rear Tread	1 448	57.0"	1 448	57.0"	1 448	57.0"
Trunk Space/Cargo Area litres (cu. ft.)	476	16.8	476	16.8	2 084	73.6
Fuel Capacity litres (Imp. gal.)	60.5	13.3**	60.5	13.3**	60.5	13.3
Curb Weight kg (lbs.)	1 271	2,833	1 285	2,833	1 400	3,087
Passenger Capacity	5†		5†		6	

*With standard mini-spare tire.

**Optional 75.5 litre (16.6 Imp. gal.) extended range fuel tank also available.

†6-passenger seating with optional flight bench seat.

COLOURS AND TRIMS

INTERIOR TRIM COLOURS	EXT. COLOURS													
	Black	Polar White	Light Pewter Metallic	Medium Pewter Metallic	Red	Midnight Blue Metallic	Dark Spruce Metallic	Medium Vanilla	Pastel Vanilla	Fawn	Dark Brown Metallic	Medium Blue-Glow*	Light Spruce-Glow*	Medium Fawn-Glow*
Pewter	1,3	2,3	1,3	1,3										
Red	1,4	2,4	4,3	4,3	1,2,4	7				9				
Spruce	1	2,5				2,5							2,5	
Vanilla	1	2,8					2,8	2,8						
Medium Fawn	1	2,6							2,6,9	2,6,9				2,6
Midnight Blue		2,7				2,7							2,7	

*Optional Glow colours.

VINYL ROOF COLOURS 1. Black, 2. White, 3. Light Pewter, 4. Medium Red, 5. Dark Spruce, 6. Dark Brown, 7. Midnight Blue, 8. Pastel Vanilla, 9. Fawn. See your Ford Dealer for actual samples of colours and trims.

Notes: 1. Spruce interior not available on L models or Wagons.

2. Vinyl roofs not available on wagons. Wagon paint/trim compatibility is the same as shown above for Sedans.

3. Not all of above vinyl roof colours available on GLX.



QUALITY REPLACEMENT PARTS FROM FORD.

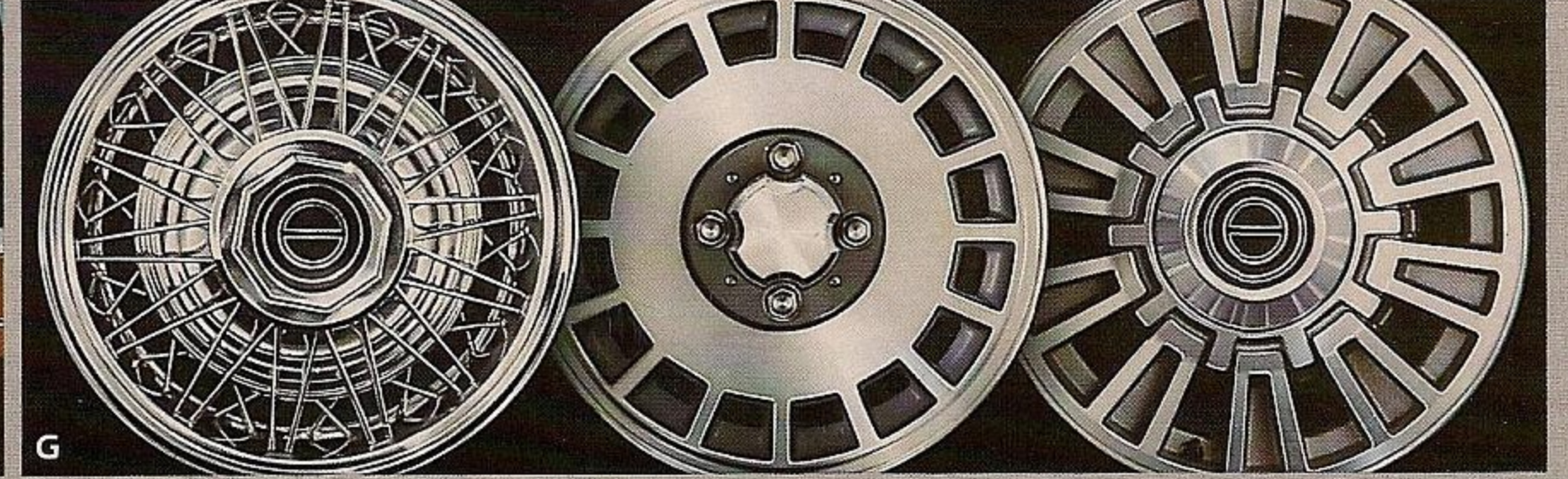
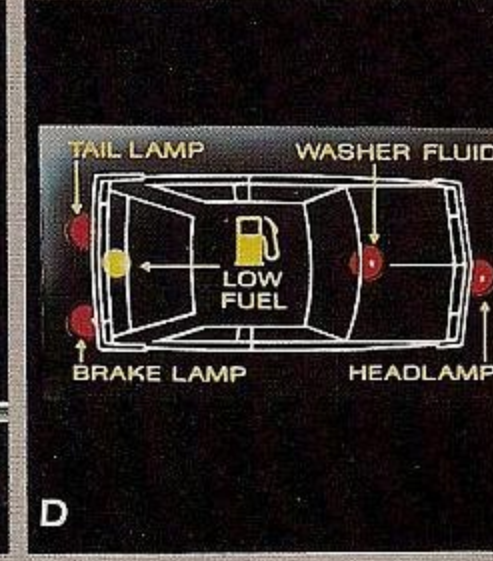
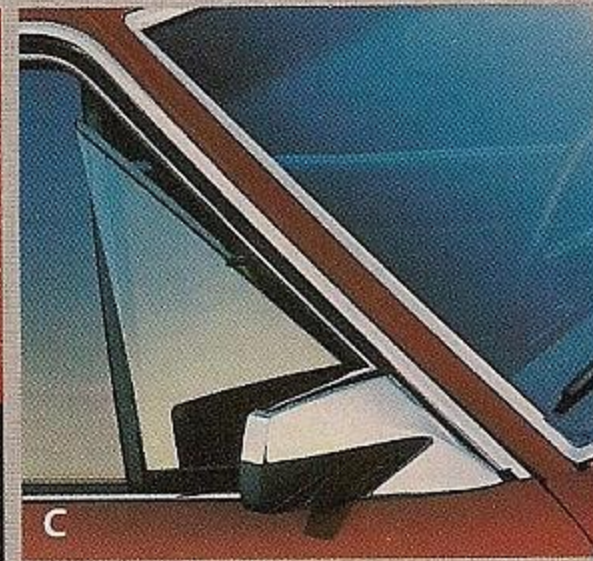
Your new Ford Granada comes equipped with factory engineered and approved parts, including a dependable Motorcraft battery, spark plugs, shock absorbers, ignition parts and long life oil filter. For continued performance be sure to specify genuine Motorcraft parts whenever replacement is necessary.

This brochure has been prepared only as a general guide to the customer and every effort has been made to ensure that all information is correct at the time of printing. However, some errors may have been included and some of the information or specifications may have been changed since the time of printing. Your dealer will have full details of any changes and/or corrections and you should ask him to bring you up to date at the time of your purchase.

Ford Motor Company of Canada, Limited reserves the right to change prices, colours, materials, specifications and models and to discontinue models without notice and without incurring obligations of any kind.

Some features described or shown may be optional at extra cost. Some options are required in combination with other options.

FORD GRANADA OPTIONS SELECTOR



Granada options give you the opportunity to equip your new Granada to your personal specifications. Options add not only to the appearance, comfort and convenience of your new car, but to its overall value as well.

Audio

- AM/FM Monaural Radio with dual front speakers*
- AM/FM Stereo Radio**
- AM/FM Stereo Radio with 8-Track Tape**
- AM/FM Stereo Radio with Cassette Tape (A)** Uses space-saving 60-min. cassette tapes.
- Premium Sound System.* Power amplifier and larger rear speakers available with all stereo systems.

**Dual speakers front and rear included

Appearance

- RH Remote Control Mirror.* Standard on GLX.
- Dual Accent Paint Stripes. Standard on GL and GLX.
- Metallic Glow Paint
- Tu-Tone Paint*
- Full Vinyl Roof*
- Rear Vinyl Roof.* For GL 4-door only.
- Leather-Wrapped Steering Wheel*
- Squire Option* (wagons). See pages 10-11.

Comfort

- Air Conditioner. Manual controls. Tinted glass recommended.

- Tinted Glass-Complete*
- Bucket seats*
- Split Bench Seats with Dual Recliners.* For GL, GLX only.
- Flip-Up Open Air Roof (B).*
- Pivoting Manual Front Windows (C).

Convenience

- Quartz Electric Sweepshand Clock
- RH Illuminated Visor Vanity Mirror
- Console (D).* Conveniently arranged system featuring electronic digital clock with elapsed time and date; graphic display warning module that indicates low fuel/low washer fluid levels, and tells you when headlamp low beam/taillamps need replacement.
- Luggage Rack (Wagons)
- Illuminated Entry System (E). Lifting either driver or passenger door handle turns on interior lights and illuminates the door lock cylinder.
- Tilt Steering Wheel (F)*
- Interval Windshield Wipers
- Cornering Lamps
- Light Group. Includes lights for luggage compartment, glove box, ashtray, engine compartment. Also dual beam map/dome light, and

rear door courtesy light switches (4-door and wagon models only).

- Rear Window Wiper/Washer* (wagons)
- Two-Way Liftgate* (wagons)
- Fingertip Speed Control (F)*

Interiors (shown on model pages 4-10)

Performance

- 3.3 Litre (200 CID) 6-Cylinder with SelectShift Automatic Transmission*
- 3.8 Litre V-6 Engine with SelectShift Automatic Transmission*
- Extended Range Fuel Tank (sedans only)
- Traction-Lok Axle.* Automatically transfers power to the rear wheel with the most traction. (See your Ford Dealer for availability.)
- 4-speed manual transmission with 2.3 L engine.
- Floor Shift. For SelectShift automatic transmission with bucket seats only.
- Heavy-Duty Battery
- Cold Weather Group. Includes heavy-duty battery and alternator, plus engine block immersion heater.
- Heavy-duty Suspension*

Power Assists

- Power Lock Group. Includes

power door locks on all models plus remote decklid release on sedans.

- Six-Way Power Seat Adjustment.* Split bench seat driver's side.
- Four-Way Power Seat Adjustment.* Flight bench seat only.
- Variable Ratio Power Steering*
- Power Side Windows*

Protection

- Rear Bumper Guards.* (Front bumper guards standard.) Included on GL, GLX.
- Bumper Rub Strips.* Included on GL, GLX.
- Bodyside Protection Molding
- Appearance Protection Group. Carpeted front floor mats, door edge guards, license plate frames.

Tires

- P-Metric Steel-Belted Radial Tires in black sidewalls (BSW), white sidewalls (WSW), and raised white letters (RWL). Consult your Ford Dealer for tire size availability.
- TR-Type Steel-Belted Radial Tires (190/65R 390 BSW). Includes aluminum wheels and special suspension components.
- Conventional Spare Tire
- Wheel Covers/Wheels (G) From Left:
 - Wire Wheel Covers (4)*
 - Aluminum Wheels (4)
 - Luxury Wheel Covers (4)*

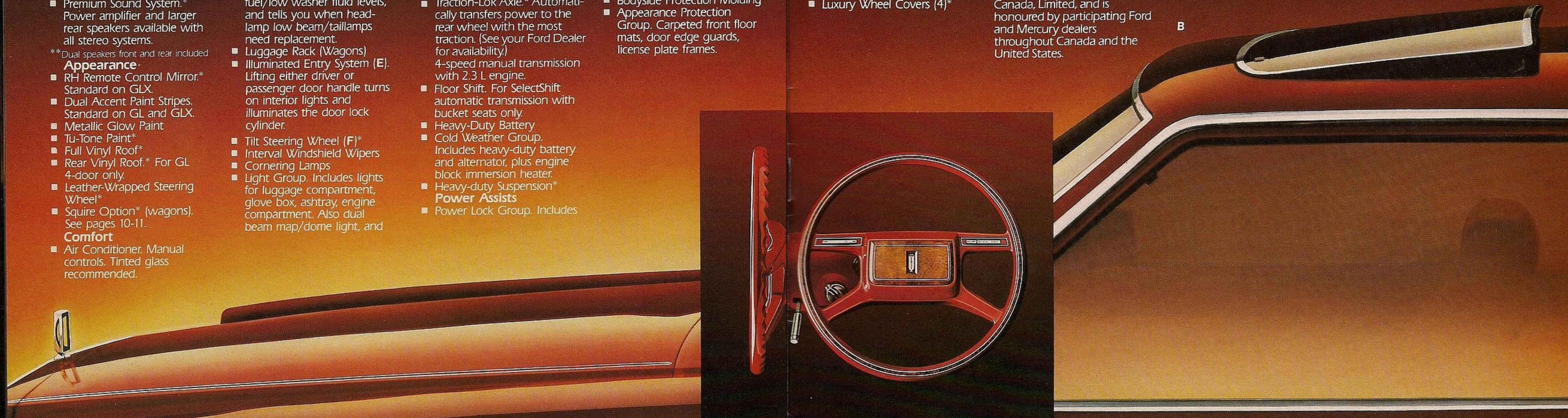


The Ford Extended Service Plan

When you're choosing options for your Ford Granada, consider the merits of ordering the Ford Extended Service Plan. Your dealer has full details. It provides extended repair cost protection, as specified, for parts and labour, for repairs to major components of the mechanical and electrical systems. The plan is offered by Ford Motor Company of Canada, Limited, and is honoured by participating Ford and Mercury dealers throughout Canada and the United States.

Options Availability

1982 Granada options are not confined to these pages but are shown throughout the catalog. Options, whether or not they are identified, are offered either in combination with other options, or are subject to additional ordering requirements or limitations. Availability of some features described here and elsewhere may be subject to delay.



GO FOR A TEST DRIVE IN A 1982 FORD GRANADA

Buy or lease the new Granada today



FORD GRANADA

