

---

CAPRI

---



---

FOR 1981 FROM  
LINCOLN  
MERCURY

---

---

# CAPRI MAGIC

---

There's a special magic that is Capri's alone. It's more than the relevant practicalities of size and weight. More than the satisfaction of good gas mileage estimates:

**23** EPA EST. MPG,\* 34 HWY. EST. More than the sleek sophistication of European-inspired sports styling. More than the deep comfort of contoured bucket seats. Or the crisp precision of rack-and-pinion steering. More than the nimble response, flat cornering, and flat-out enjoyment from Capri's firm-riding suspension system. More

**23\***

**34**

EPA EST. MPG

HWY. EST.

even than Capri's optional Radial Sports Suspension. Or the sophisticated optional Rally Suspension system, with heavy-duty components computer-tuned to TRX radial tires and forged aluminum wheels. And sports options like a five-speed manual overdrive transmission. Capri Magic is all these

things—and still more, with a wide choice of exciting options like a console, T-roof, moonroof, raised white-letter tires...or comforting options like air conditioning, speed control, leather seat cushion inserts, stereo radios, plus a Premium Sound System that gives you sparkling clarity at high and low frequencies. With a wide choice of engines and transmissions (see page 10) and an exciting series lineup—Capri, Capri GS, Capri RS, and Black Magic, which has a magic spirit all its own.

Capri Magic. It's that indefinable spirit you've been waiting for.

\*With 2.3 liter OHC engine, 4-speed manual transmission. Compare this estimate to the estimated MPG of other cars. You may get different mileage depending on how fast you drive, weather conditions and trip length. Actual highway mileage will probably be less than the estimated highway fuel economy. California ratings **23** EPA EST. MPG, 33 HWY. EST

Some of the equipment shown may be available only at extra cost, and only on specific models. Please see pages 9 to 12 for specific information regarding standard and optional equipment.

---

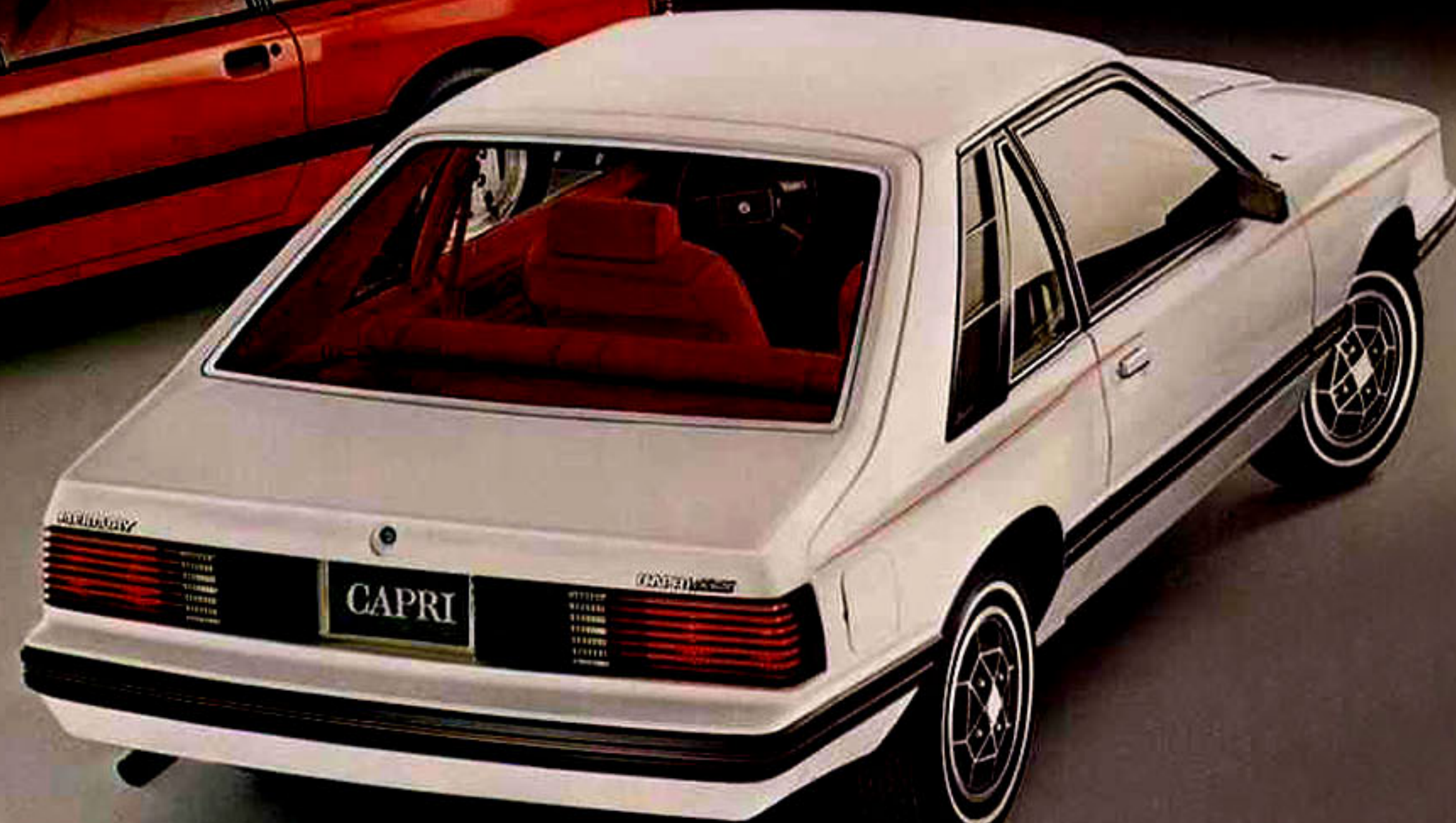
MERCURY CAPRI in Tu-Tone Pewter with optional wire wheel covers.



Mercury Capri RS in Bright Red with TRX tires and forged aluminum wheels, and optional flip-up removable moonroof.



Mercury Capri GS in White with sport wheel covers.



MERCURY CAPRI BLACK MAGIC in Black and Gold with Gold-color forged aluminum wheels and optional T-roof.



Mercury Capri is a sporty specialty car that seats four. It has a liftback third door. With the rear seat folded down, its cargo space is 30.3 cubic feet. Many neat features are standard. Like an AM radio,\* 2.3 liter OHC four-cylinder engine, four-speed manual transmission with floor-mounted shift lever, power brakes, and radial tires. Optional features are listed on pages 9-11. And if you like, you can pair up an engine and transmission from the list of available power trains on page 12.

For those who like to take it through the gears, there's Capri RS with a Radial Sport suspension package specially designed to give you sporty handling. On the outside, Capri RS dresses up your car with blackout grille treatment, sculptured hood scoop, wide tape stripes, and rear spoiler; inside, a leather-wrapped steering wheel and special sporty black finish on the instrument cluster.

But if your preference runs more toward luxury and convenience touches, choose the interior elegance of the Capri GS, described on page 6.

If you think you can handle it, opt for the Capri Black Magic. You'll recognize it by the Cat medallion on the front fender. And the distinctive gold and black accents inside and out. Also available in white with gold accents. Black Magic (shown here with the bold new T-roof option) has a hood scoop and rear spoiler as well as a Rally suspension system and Michelin TRX radial tires on forged aluminum wheels with a gold-color finish. All of which helps make it a really special specialty car.

\*May be deleted for credit.



*Optional Recaro bucket seats in Med. Wedgewood Blue cloth.*



*Low-back bucket seats shown in optional leather with vinyl trim, optional console.*

In one glance you'll see that Capri's bold, exciting styling extends to its interiors. All Capris come with sporty low-back bucket seats with reclining seatbacks. And you have many choices of materials, colors, and configurations.

Wrap yourself in optional Recaro bucket seats, shown above left. They were designed for Capri by Recaro, a European manufacturer of specialty seats for aircraft and racing cars. Recaro seats feature removable lumbar support cushion, adjustable thigh depth-support cushion, and infinitely adjustable seatback recliner for extraordinary personal comfort.

Another choice is the luxurious Capri GS. The GS interior, shown above right with optional console, features new low-back bucket seats. It comes in soft luxury cloth or optional rich leather trimmed in vinyl. Other GS niceties are a luxury steering wheel, luxury door and quarter trim, 18-ounce carpeting, driver's door map pocket, and light group. On the outside, black dual remote-control mirrors and a GS medallion affirm your good taste.

Gold cloth inserts and black vinyl seat trim highlight the sleek Black Magic interior, shown right. Note the standard three-spoke sport steering wheel and the instrument panel featuring six dials for tachometer, speedometer, and odometer, plus temperature, oil, fuel, and alternator gauges.

The Black Magic seat sew-style shown right is standard on Capri and Capri RS in cloth or vinyl. Please see page 11 for details.

No matter which interior you choose, you'll be in comfort in Capri.

# GO IN CAPRI COMFORT.

*BLACK MAGIC interior. Low-back bucket seats  
in Gold cloth with Black trim, optional console.*



# OPTIONS



**T-ROOF** with removable tinted glass panels for the open-air feeling of a convertible. Lets you enjoy the great outdoors.



**AM/FM STEREO RADIO** with cassette is one of five Capri radio choices. (See page 10 for full selection.) Add optional Premium Sound System to any of the stereo radios for greatly improved sound quality. System includes 12-watt power amplifier and dual rear premium sound speakers.

**REAR WINDOW DEFROSTER.** Helps keep your rear window free of ice and snow.



**LUXURY STEERING WHEEL WITH "TILT" FEATURE.** Tilt steering wheel adjusts to five different positions, to an angle just right for you. Also tilts to allow easy entry and exit from the driver's seat.



**FLIP-UP, REMOVABLE MOONROOF.** Lets the sunshine, fresh air, and moonlight in.



**CONSOLE.** Includes electronic digital clock with date and elapsed time functions; also warning indicators for low washer fluid level, low fuel level, or failure of headlights or taillights.



**AIR CONDITIONING** adds comfort to your driving.

## POWER

- POWER DOOR LOCKS
- POWER STEERING
- POWER WINDOWS



**MICHELIN TRX RADIAL TIRES** and three-spoke 390mm forged aluminum wheels (left). Standard on Black Magic.



**WHEELS AND WHEEL COVERS.** Dress up your Capri with (left to right) sport wheel covers, wire wheel covers, forged aluminum wheels (standard on Black Magic), turbine wheel covers (standard on Capri, Capri GS, and Capri RS), styled steel wheels with trim rings. Cast aluminum wheels also available. (Not shown.)

## MAKE YOUR OWN CHOICES



### CAPRI

#### Standard features on all Capris:

##### STANDARD EXTERIOR FEATURES

- Three-door hatchback design
- 14-inch turbine wheel covers
- Driver's-side remote-control mirror
- Dual sealed-beam halogen headlamps
- Dual bodyside accent stripes
- Wraparound taillamps
- Wraparound wide bodyside molding
- Black and bright grille
- Bright windshield molding
- Color-keyed hood louvers
- Black cowl and quarter louvers
- Bright headlight frames

##### STANDARD INTERIOR FEATURES

- Four-passenger seating capacity
- Vinyl low-back bucket seats w/reclining seatbacks and inertia seatback release
- Deluxe color-keyed seat belts
- Color-keyed 10-ounce cut-pile carpeting
- Fold-down rear seat
- Visor vanity mirror
- Sport steering wheel
- Stalk-mounted controls on steering column for horn, turn signals, headlamp dim switch, windshield washer/wiper
- Instruments: tachometer; speedometer/odometer/trip odometer; oil pressure gauge; temperature and fuel gauges; ammeter; and warning lights for brakes and seat belts
- Day/night inside rearview mirror
- Woodtone instrument panel appliques
- Lockable glove box
- Cargo area cover
- Passenger door courtesy light switch
- Carpeted luggage area
- Color-keyed door moldings

##### STANDARD FUNCTIONAL FEATURES

- AM radio (may be deleted for credit)
- Liftback third door
- 2.3 liter OHC 4-cylinder engine with Holley-Weber 2-bbl. carburetor
- Four-speed manual transmission with floor-mounted shift lever
- 3.08:1 axle ratio
- 40-amp alternator
- Maintenance-free battery
- P175/75R14 steel-belted radial tires

- Rack-and-pinion steering
- Power brakes, front disc/rear drum
- Modified MacPherson strut front suspension with stabilizer bar
- Four-bar link design coil-spring rear suspension
- Anti-theft door latches
- Inside hood release
- Electronic ignition system
- Electronic voltage regulator
- Full fender splash shields
- Fluidic windshield washer system
- Center-mounted hand brake
- 8.6-quart cooling system
- High/low ram air ventilation
- Deluxe sound package
- 12.5-gallon fuel tank



### CAPRI GS

Includes all Capri standard features *plus* these additions and/or differences:

- Black dual remote-control mirrors
- Four-spoke luxury steering wheel with woodtone insert
- 18-ounce carpeting
- Luxury seat, door, and quarter trim
- Light Group
- GS medallion



### CAPRI RS

Includes all Capri standard features *plus* these additions and/or differences:

##### EXTERIOR

- Simulated hood scoop
- Rear decklid spoiler
- RS bodyside identification
- Wide tape stripes
- Black dual remote-control mirrors
- Black grille

- Black window frame moldings, door handles, and lock cylinders

##### INTERIOR

- Leather-wrapped steering wheel
- Simulated engine-turned finish on instrument panel
- RS medallion on instrument panel

##### FUNCTIONAL

- Radial Sport—upgraded suspension system



### CAPRI BLACK MAGIC

Includes all Capri standard features *plus* these additions and/or differences:

- Choice of Black or White exterior paint with Gold accents
- Hood scoop, small
- Rear spoiler
- Gold tape stripe treatment
- Black bodyside molding with Gold insert
- Black door handles and lock cylinders
- Black vinyl seat trim with Gold cloth inserts
- Michelin TRX low-profile steel-belted radial tires, TRX190/65R390
- 15.3" forged aluminum wheels with special Gold-color finish
- Rally suspension system: Includes thicker front and rear sway bars than on Capri RS; higher spring rates and high-rate shock absorbers.
- Black RH remote-control mirror
- Black window frames and louvers (White louvers with White car)
- White taillight with White car

## MORE CHOICES

	Capri	Capri GS	Capri RS	Black Magic
<input type="checkbox"/> Air Conditioning	OPT	OPT	OPT	OPT
<input type="checkbox"/> Axle, Traction-Lok Differential*	OPT	OPT	OPT	OPT
<input type="checkbox"/> Battery, Heavy-Duty, Main.-Free	OPT	OPT	OPT	OPT
<input type="checkbox"/> Black Mud/Stone Deflectors	OPT	OPT	OPT	OPT
<input type="checkbox"/> Defroster, Electric Rear Window	OPT	OPT	OPT	OPT
<input type="checkbox"/> Extended Service Plan (see page 12)	OPT	OPT	OPT	OPT
<input type="checkbox"/> Floor Mats, Vinyl	OPT	OPT	OPT	OPT
<input type="checkbox"/> Hood Scoop, Large	OPT	OPT	STD	NA
<input type="checkbox"/> Louvers, Rear Window*	OPT	OPT	OPT	OPT
<input type="checkbox"/> Luggage Carrier, Roof-Mounted	OPT	OPT	OPT	OPT
<input type="checkbox"/> Mirror, Right-Hand Remote-Control	OPT	STD	STD	STD
<input type="checkbox"/> Moldings, Rocker Panel	OPT	OPT	OPT	NA

### POWER

<input type="checkbox"/> Power Brakes	STD	STD	STD	STD
<input type="checkbox"/> Power Door Locks	OPT	OPT	OPT	OPT
<input type="checkbox"/> Power Steering	OPT	OPT	OPT	OPT
<input type="checkbox"/> Power Windows*	OPT	OPT	OPT	OPT

### RADIOS

<input type="checkbox"/> AM (may be deleted for credit)	STD	STD	STD	STD
<input type="checkbox"/> AM/FM Monaural	OPT	OPT	OPT	OPT
<input type="checkbox"/> AM/FM Stereo	OPT	OPT	OPT	OPT
<input type="checkbox"/> AM/FM Stereo w/Cassette Tape	OPT	OPT	OPT	OPT
<input type="checkbox"/> AM/FM Stereo w/8-Track Tape	OPT	OPT	OPT	OPT
<input type="checkbox"/> Dual Rear Speakers (standard with stereo radios)	OPT	OPT	OPT	OPT
<input type="checkbox"/> Premium Sound System	OPT	OPT	OPT	OPT

### ROOFS

<input type="checkbox"/> Moonroof, Flip-Up Removable*	OPT	OPT	OPT	OPT
<input type="checkbox"/> T-Roof	OPT	OPT	OPT	OPT
<input type="checkbox"/> Speed Control	OPT	OPT	OPT	OPT
<input type="checkbox"/> Steering Wheel, Leather-Wrapped	OPT	OPT	STD	OPT
<input type="checkbox"/> Steering Wheel, Tilt*	OPT	OPT	OPT	OPT
<input type="checkbox"/> Tape Stripe and Spoiler (black or white cars only)	OPT	OPT	NA	NA
<input type="checkbox"/> Tinted Glass	OPT	OPT	OPT	OPT
<input type="checkbox"/> Tu-Tone Paint, Black Lower Bodyside	OPT	OPT	OPT	NA
<input type="checkbox"/> Vinyl Lower Bodyside Protection	OPT	OPT	OPT	OPT
<input type="checkbox"/> Wipers, Interval Windshield	OPT	OPT	OPT	OPT
<input type="checkbox"/> Wiper/Washer, Rear Window	OPT	OPT	OPT	OPT

### ENGINES

<input type="checkbox"/> 2.3 Liter OHC 4-Cyl. Engine	STD	STD	STD	STD
<input type="checkbox"/> 3.3 Liter (200 CID) 1V 6-Cyl. Engine	OPT	OPT	OPT	OPT
<input type="checkbox"/> 4.2 Liter (255 CID) 2V 8-Cyl. Engine*	OPT	OPT	OPT	OPT

## TRANSMISSIONS

	Capri	Capri GS	Capri RS	Black Magic
<input type="checkbox"/> 4-Speed Manual*	STD	STD	STD	STD
<input type="checkbox"/> 5-Speed Manual Overdrive*	OPT	OPT	OPT	OPT
<input type="checkbox"/> 3-Speed Automatic	OPT	OPT	OPT	OPT

## RADIAL TIRES

<input type="checkbox"/> P175/75R14 BSW	STD	STD	STD	NA
<input type="checkbox"/> P175/75R14 WSW	OPT	OPT	OPT	NA
<input type="checkbox"/> P185/75R14 BSW or WSW	OPT	OPT	OPT	NA
<input type="checkbox"/> P185/75R14 RWL	OPT	OPT	OPT	NA
<input type="checkbox"/> TRX190/65R390 BSW Michelin*	OPT	OPT	OPT	STD

BSW—Black Sidewall. WSW—White Sidewall.  
RWL—Raised White Letters.

## WHEELS AND WHEEL COVERS

<input type="checkbox"/> Turbine Wheel Covers* (shown p. 8)	STD	STD	STD	NA
<input type="checkbox"/> Sport Wheel Covers (shown pp. 4, 8)	OPT**	OPT**	OPT**	NA
<input type="checkbox"/> Wire Wheel Covers (shown pp. 3, 8)	OPT	OPT	OPT	NA
<input type="checkbox"/> Forged Aluminum Wheels* (shown pp. 3, 8)	OPT	OPT	OPT	STD
<input type="checkbox"/> Cast Aluminum Wheels	OPT	OPT	OPT	NA
<input type="checkbox"/> Styled Steel Wheels/Trim Rings (shown p. 8)	OPT	OPT	OPT	NA

## OPTIONAL PACKAGES

<input type="checkbox"/> APPEARANCE PROTECTION GROUP Includes 14-ounce carpet floor mats, door-edge guards, and rear license plate frame.	OPT	OPT	OPT	OPT
<input type="checkbox"/> CONSOLE Includes electronic digital clock/date with numeric display and elapsed time feature; and graphic display with warning indicators for low washer fluid level, low fuel level, or failure of headlights or taillights (running and brake).	OPT	OPT	OPT	OPT
<input type="checkbox"/> LIGHT GROUP Includes third-door courtesy light, ashtray light, glove box light, engine compartment light, and dual beam dome lamp.	OPT	STD	OPT	OPT
<input type="checkbox"/> POWER DOOR LOCK GROUP Includes power door locks and remote-control third door release.	OPT	OPT	OPT	OPT
<input type="checkbox"/> RADIAL SPORT SUSPENSION Includes upgraded suspension system.	OPT	OPT	STD	NA

STD—Standard. OPT—Optional. NA—Not Available.

\*This equipment is subject to additional ordering requirements or limitations. Please consult your Dealer for details.

\*\*Available at no extra cost.



## INTERIOR SEATING CHOICES



Vinyl low-back reclining bucket seats standard on CAPRI and CAPRI RS. Also available in cloth or leather-and-vinyl. Colors: Caramel (not available in cloth); Black, Medium Red, Medium Wedgewood Blue, Pewter, Vaquero.



Luxury cloth low-back reclining bucket seats. Standard on CAPRI GS. Also available in leather-and-vinyl. Colors: Caramel (not available in cloth); Black, Medium Red, Medium Wedgewood Blue, Pewter, Vaquero.

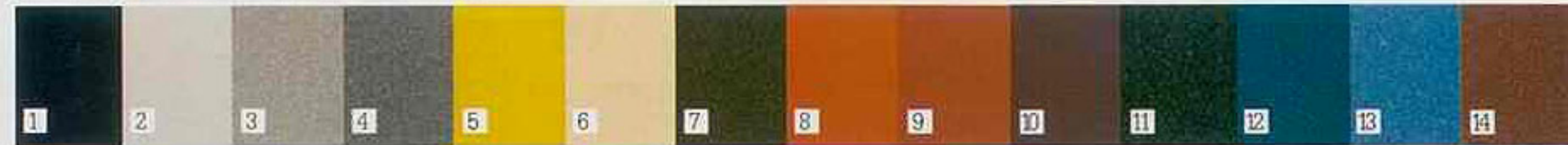


Low-back reclining bucket seats. Black vinyl with Gold cloth inserts. Standard on BLACK MAGIC. Available with black or white Capri.



Optional cloth Recaro bucket seats. Available on all CAPRI except Black Magic. Colors: Black, Medium Wedgewood Blue, Vaquero.

## EXTERIOR COLOR CHOICES



### STANDARD COLORS

- |  |   |  |
|--|---|--|
| <input type="checkbox"/> 1. Black                  | <input type="checkbox"/> 5. Bright Yellow*      | <input type="checkbox"/> 9. Bright Red               |
| <input type="checkbox"/> 2. White                  | <input type="checkbox"/> 6. Pastel Chamois*     | <input type="checkbox"/> 10. Medium Red              |
| <input type="checkbox"/> 3. Light Pewter Metallic  | <input type="checkbox"/> 7. Dark Brown Metallic | <input type="checkbox"/> 11. Dark Cordovan Metallic* |
| <input type="checkbox"/> 4. Medium Pewter Metallic | <input type="checkbox"/> 8. Bright Bittersweet  | <input type="checkbox"/> 12. Dark Blue Metallic      |

### OPTIONAL GLAMOUR COLORS

- |  |
|--|
| <input type="checkbox"/> 13. Medium Blue Metallic        |
| <input type="checkbox"/> 14. Medium Bittersweet Metallic |

\* Available on Capri and Capri GS only

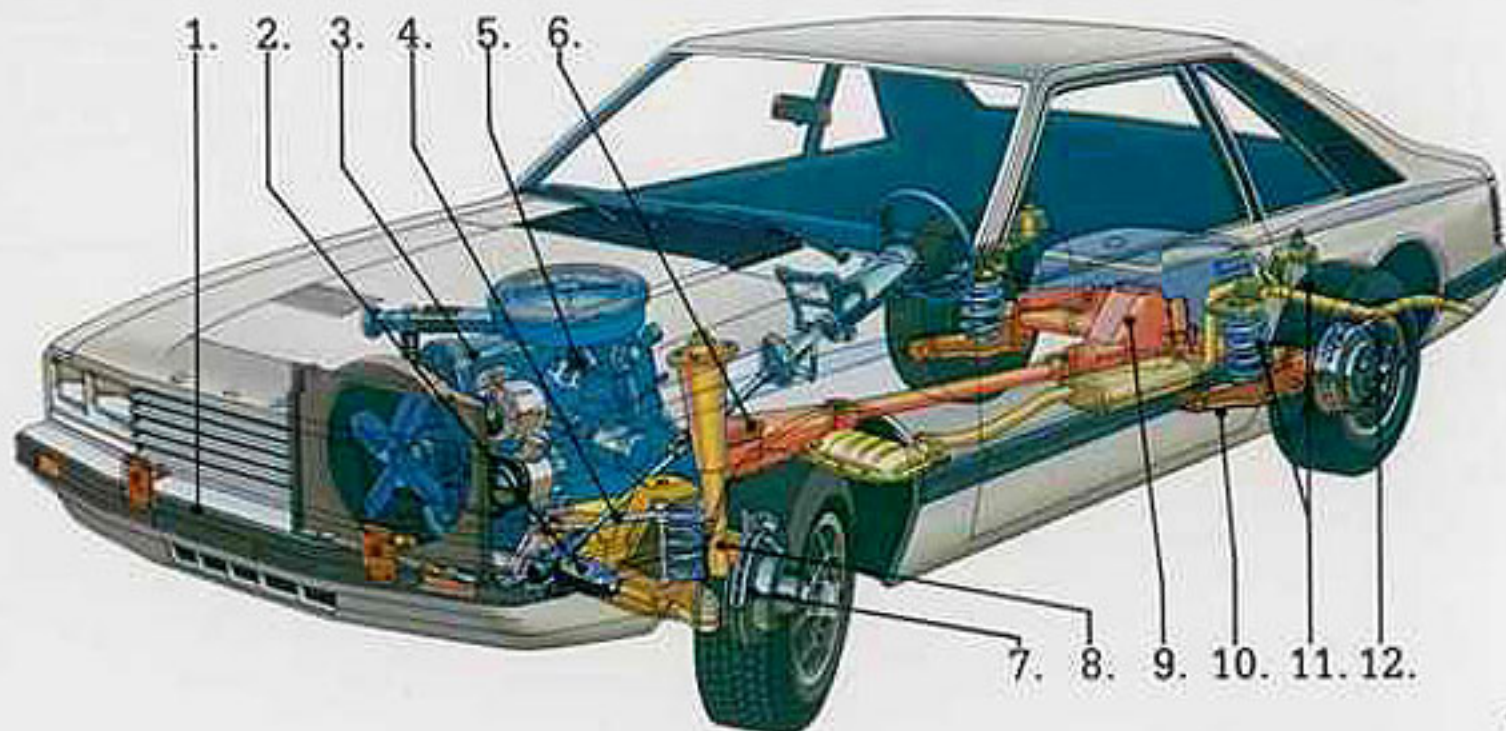
### OPTIONAL SPECIALTY TU-TONES— Capri and Capri GS only

- |  |  |  |  |
|--|--|--|--|
| <input type="checkbox"/> Black/<br>Light Pewter Metallic/<br>Black | <input type="checkbox"/> Medium Pewter Metallic/<br>Light Pewter Metallic/<br>Medium Pewter Metallic | <input type="checkbox"/> Medium Red/<br>Light Pewter Metallic/<br>Medium Red | <input type="checkbox"/> Dark Blue Metallic/<br>Light Pewter Metallic/<br>Dark Blue Metallic |
|--|--|--|--|

NOTE: Due to occasional printing irregularities, the colors shown may vary from actual hues. Please see your Lincoln-Mercury Dealer for accurate color chips.

## CAPRI ENGINEERING

1. Aerodynamic drag coefficient, 0.41 (European measurement).
2. Rack-and-pinion steering.
3. 2.3 liter single overhead camshaft crossflow engine with tubular exhaust manifold (std.).
4. Front stabilizer bar—25mm, standard.
5. Solid-state ignition.
6. Four-forward-speed manual gearbox (ratios: 1st, 3.98:1; 2nd, 2.14:1; 3rd, 1.49:1; 4th, 1.00:1).
7. Power brakes, front disc—9.3" vented, std.
8. Modified MacPherson independent front suspension.
9. Lightweight cast center section rear axle—3.08:1 standard ratio.
10. Four-bar link rear-axle locators.
11. Coil-spring/vertical shock absorber springing medium.
12. Rear drum brakes—9.0" x 1.75" cast iron, std.



## CAPRI SPECIFICATIONS

Wheelbase	100.4"
Turning Diameter	37.2'
Overall Length	179.1"
Overall Height	51.4"
Overall Width	69.1"
Wheel Tread—Front	56.6"
—Rear	57.0"
Headroom—Front	37.2**
—Rear	35.9"
Legroom—Front (Max.)	41.7"
—Rear (Min.)	31.2"
Shoulder Room—Front	55.6"
—Rear	54.6"
Hiproom—Front	54.0"
—Rear	47.1"
Cargo Volume (Cu. Ft.)	30.3**
Fuel Capacity (Gals.)	12.5
Curb Weight, 49 States (Lbs.)	2623

\*1" less with optional moonroof.  
\*\*With rear seat folded down.



Ford Motor Company's optional Extended Service Plan covers certain selected components on new Lincoln-Mercury cars for longer than the vehicle's basic warranty. The cost is so moderate for the protection you get that it could pay for itself the first time you need it. Your Lincoln-Mercury Dealer will be happy to give you complete details of the Plan, which is available on cars sold and normally operated in the 50 United States.

## CAPRI POWER TRAINS

	2.3 Liter	3.3 Liter	4.2 Liter
4-Speed Manual	STD	STD	NA
5-Speed Manual	OPT†	NA	NA
Automatic	OPT	OPT	OPT†

†Overdrive ††Required

Buy or lease your Capri from your Lincoln-Mercury Dealer.

## CORROSION PERFORATION WARRANTY

Ford Motor Company offers a limited three-year corrosion perforation warranty excluding exhaust system components on all new 1981 Lincoln-Mercury automobiles. And it's free.

The warranty states that any part which, in normal use, develops perforation from corrosion within three years of retail delivery or first use will be repaired or replaced free of charge by the selling Dealer after inspection by a Ford representative. Exhaust system components or parts which develop corrosion perforation caused by accidents or other damage are not covered.

This warranty valid only in the 50 United States.



## QUALITY REPLACEMENT PARTS FROM FORD

### ...FOR SURE

Your new Mercury Capri comes equipped with factory-engineered and approved parts including a dependable Motorcraft battery, shock absorbers, spark plugs, long life oil filters, and motor oil. For continued top performance, be sure to specify genuine Motorcraft parts whenever replacement is necessary.

Specifications and descriptions used were in effect when this publication was approved for printing. Lincoln-Mercury Division reserves the right to discontinue models or options at any time, or change specifications, equipment or designs without notice and without incurring obligation. Standard and optional equipment listed are subject to change. Some features described are optional at extra cost. Some options are required in combination with other options. Availability of some models and features may be subject to a slight delay.

## GAS MILEAGE

**23\*** EPA EST. MPG **34** HWY. EST.

\*With 2.3 liter OHC engine, 4-speed manual transmission. Compare this estimate to the estimated MPG of other cars. You may get different mileage depending on how fast you drive, weather conditions and trip length. Actual highway mileage will probably be less than the estimated highway fuel economy. California ratings **23** EPA EST. MPG, **33** HWY. EST.

## MAINTENANCE SCHEDULE

The Ford Motor Company wants to reduce both the frequency and cost of scheduled maintenance on its cars to an absolute minimum. And compared to just a few years ago, we're making strides in that direction. For example, in 1973 an engine oil change was called for each 4,000 miles. In 1981, Capri oil changes are recommended at 7,500-mile intervals. Other recommended intervals are now 30,000 miles between spark plug changes; 30,000 miles between air filter replacements; 50,000 miles or three years between engine coolant replacements. We're proud of these improvements, and we're working constantly to make them even better.

Form No. P-103 Litho in U.S.A. 10-80 (490M)

## MERCURY CAPRI

LINCOLN-MERCURY DIVISION

